



Caro Point, 5 Gatliff Road
London SW1W

GARTON JONES.COM



Caro Point, 5 Gatliff Road
London, SW1W

£575,000 Leasehold

A studio apartment to buy of approx. 288 sq.ft (26.8 sq.m) in Caro Point, one of the buildings forming the popular Grosvenor Waterside development in Chelsea. There is open plan living with an integrated kitchen with Miele appliances, good storage, wood flooring and a shower room. Residents have the use of a 24 hour concierge service and a leisure suite with a well-equipped gym and spa facilities. There is an on-site Sainsbury's, a crèche and Purple Dragon private kids' club. The shops, restaurants and transport services of both Sloane Square and Victoria are within walking distance and Battersea Park is a short stroll across Chelsea Bridge.

Available via Garton Jones (on-site at Grosvenor Waterside underneath Bramah House).

Service Charges: approx. £2,430.00 annually (2023)

Ground Rent £780.00 per annum 2023

Leasehold: 999 years from 2009 (expires 3002, approx. 979 years remaining)

EWS1 compliant

EPC Rating: C (78)

Council Tax: Westminster Council (band D)

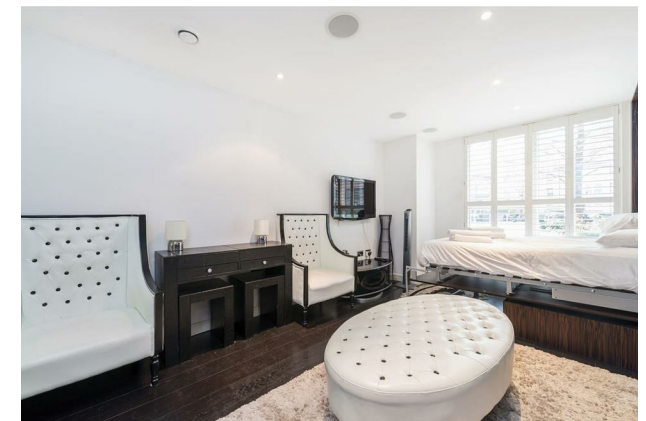
EPC certificate available on request.

- 288 Sq.ft (26.8 Sq.m)
- Studio Apartment - Open Plan Living
- Wall Mounted Pull Down Double Bed
- Kitchen With Miele Integrated Appliances
- Shower Room
- Wood Flooring & Storage
- 24 Hour Concierge, On-Site Residents' Gym & Spa Facilities
- On-Site Coffee Shop, Sainsbury's Local, Crèche & Purple Dragon Private Kids' Club
- Within Walking Distance Of Sloane Square & Victoria Train Station
- EWS1 Compliant

GARTON JONES.COM

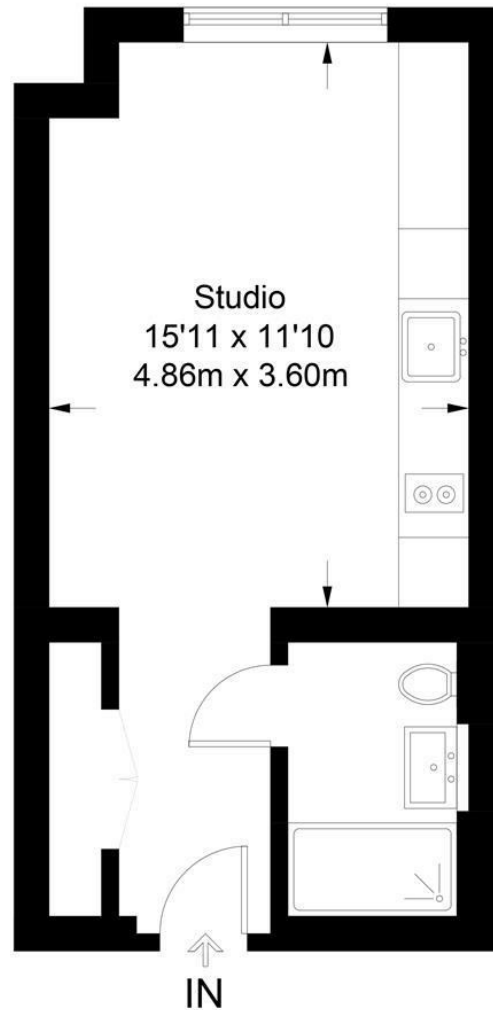
8 Gatliff Road
Grosvenor
Waterside
Chelsea
London
SW1W 8DP

Sales +44 (0) 20 7730 5007
gws@gartonjones.com
www.gartonjones.com



Caro Point

Approximate Gross Internal Area = 288 sq ft / 26.8 sq m



Ground Floor

Not to scale, for guidance only and must not be relied upon as a statement of fact.
All measurements and areas are approximate only and have been prepared in accordance with the current edition of the RICS Code of Measuring Practice.

