



Chantrey House, Belgravia
London SW1W

GARTON JONES.COM



Chantrey House, Belgravia London, SW1W

£1,080,000 Leasehold

A beautifully presented 1 DOUBLE BEDROOM apartment for sale of approx. 641sq.ft (60sq.m) in this small secure building in Belgravia. This spacious apartment is finished to a high standard and benefits from a double bedroom with a flat screen wall mounted Samsung TV, fitted wardrobes and a luxury en-suite bathroom. There is an OPEN PLAN reception room with a wall mounted flat screen TV, a smart kitchen with integrated appliances including a wine cooler and induction hob, air conditioning, a video entry phone system, a guest cloakroom and a Crestron iPad controlled home system. 24 HOUR CONCIERGE SERVICE. Please note there is a current tenancy in place.

Chantrey House is a Grade II listed Edwardian property and sits within leafy Belgravia, one of the most prestigious and sought after residential areas of London. There are plenty of eateries, galleries, antiques shops and boutiques close by. Belgravia and Elizabeth Street, Knightsbridge, and Sloane Square are within easy access and Victoria Station (with Gatwick Express trains) are just a few minutes' walk.

Available via Garton Jones Chelsea & Belgravia (based on-site at Grosvenor Waterside underneath Bramah House - approx. a 10 minute walk from Chantrey House).

Service Charges: approx. £3,315.00 per quarter
Ground Rent: £500 1/2 Yearly
Lease: 999 years from June 2003 (expires 3002, approx. 978 years remaining as of 2024)
EWS1 compliant

Council Tax: Westminster City Council (band F)

EPC rating: C (75)

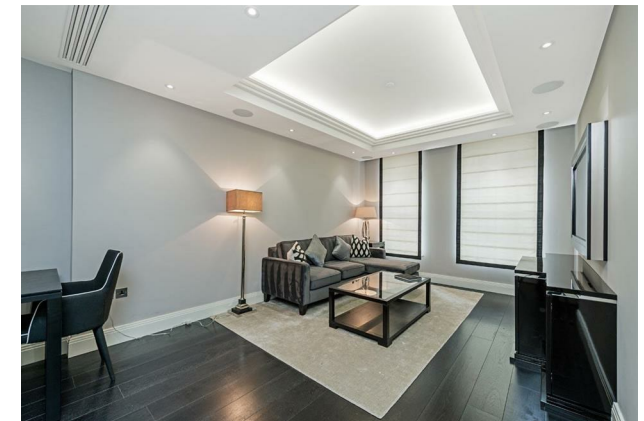
EPC certificate available on request.

- 641Sq.ft (59.5 Sq.m)
- 1 Double Bedroom Apartment
- Open Plan Reception Room
- Kitchen With Miele Integrated Appliances
- Luxury En-Suite Bathroom
- Wood Flooring & Comfort Cooling
- 24 Hour Concierge
- Situated In A Grade II Listed Building In Belgravia
- Easy Access To Belgravia, Elizabeth Street & Knightsbridge
- Close To Victoria Train Station & Sloane Square

GARTON JONES.COM

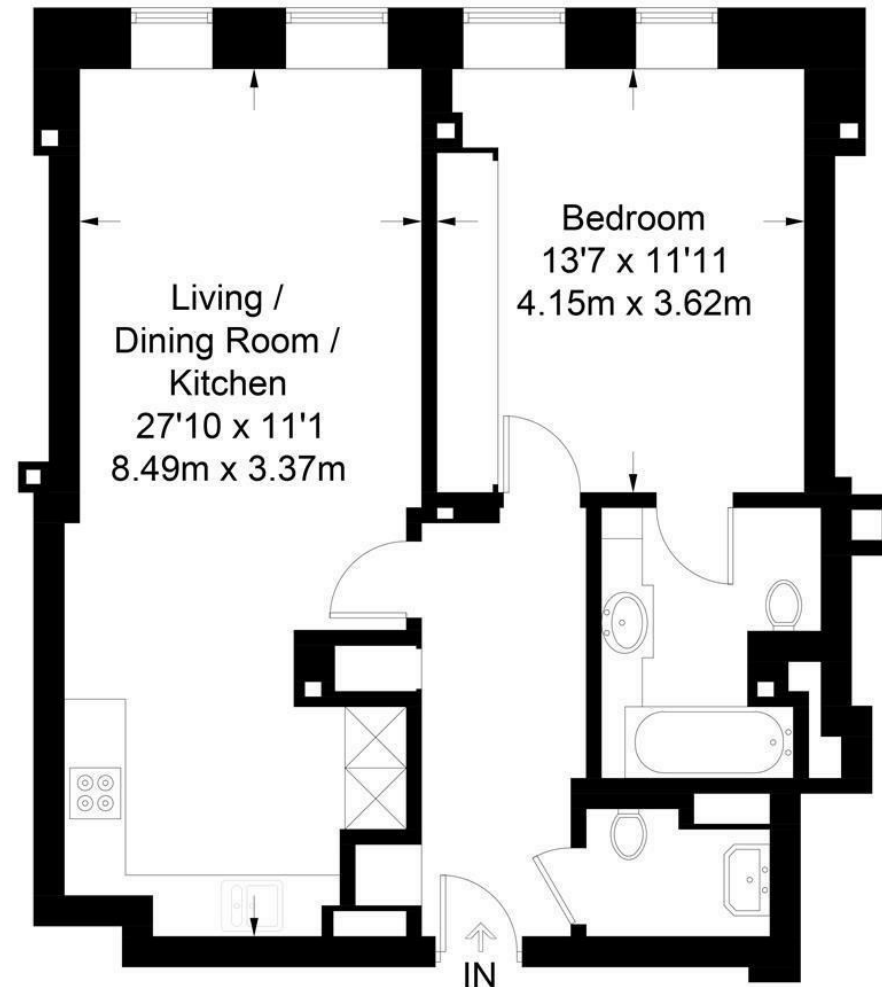
8 Gatliff Road
Grosvenor
Waterside
Chelsea
London
SW1W 8DP

Sales +44 (0) 20 7730 5007
gws@gartonjones.com
www.gartonjones.com



Chantrey House

Approximate Gross Internal Area = 641 sq ft / 59.5 sq m



Not to scale, for guidance only and must not be relied upon as a statement of fact.
All measurements and areas are approximate only and have been prepared in
accordance with the current edition of the RICS Code of Measuring Practice.

