



Chantrey House, Belgravia
London SW1W

GARTON JONES.COM



Chantrey House, Belgravia London, SW1W

£1,080,000 Leasehold

A beautifully presented 1 DOUBLE BEDROOM apartment for sale of approx. 641sq.ft (60sq.m) in this small secure building in Belgravia. This spacious apartment is finished to a high standard and benefits from a double bedroom with a flat screen wall mounted Samsung TV, fitted wardrobes and a luxury en-suite bathroom. There is an OPEN PLAN reception room with a wall mounted flat screen TV, a smart kitchen with integrated appliances including a wine cooler and induction hob, comfort cooling, a video entry phone system, a guest cloakroom and a Crestron iPad controlled home system. 24 HOUR CONCIERGE SERVICE. Please note there is a current tenancy in place.

Available via our on-site office at Grosvenor Waterside (underneath Bramah House, approx. a 5 minute walk from the property). Belgravia and Elizabeth Street, Knightsbridge, and Sloane Square are within easy access. The property is very conveniently located for access to Victoria Station.

Service Charges: approx. £3,315.00 per quarter
Ground Rent: £500 1/2 Yearly
Lease: 999 years from June 2003 (expires 3002, approx. 978 years remaining as of 2024)
EWS1 compliant

Council Tax: Westminster City Council (band F)

EPC rating: C (75)

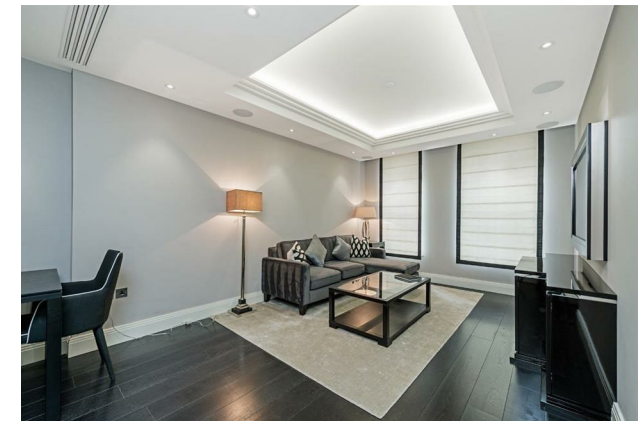
EPC certificate available on request.

- 641Sq.ft (59.5 Sq.m)
- 1 Double Bedroom Apartment
- Open Plan Reception Room
- Kitchen With Miele Integrated Appliances
- Luxury En-Suite Bathroom
- Wood Flooring & Comfort Cooling
- 24 Hour Concierge
- High Specification
- Easy Access To Belgravia, Elizabeth Street & Knightsbridge
- Close To Victoria Train Station & Sloane Square

GARTON JONES.COM

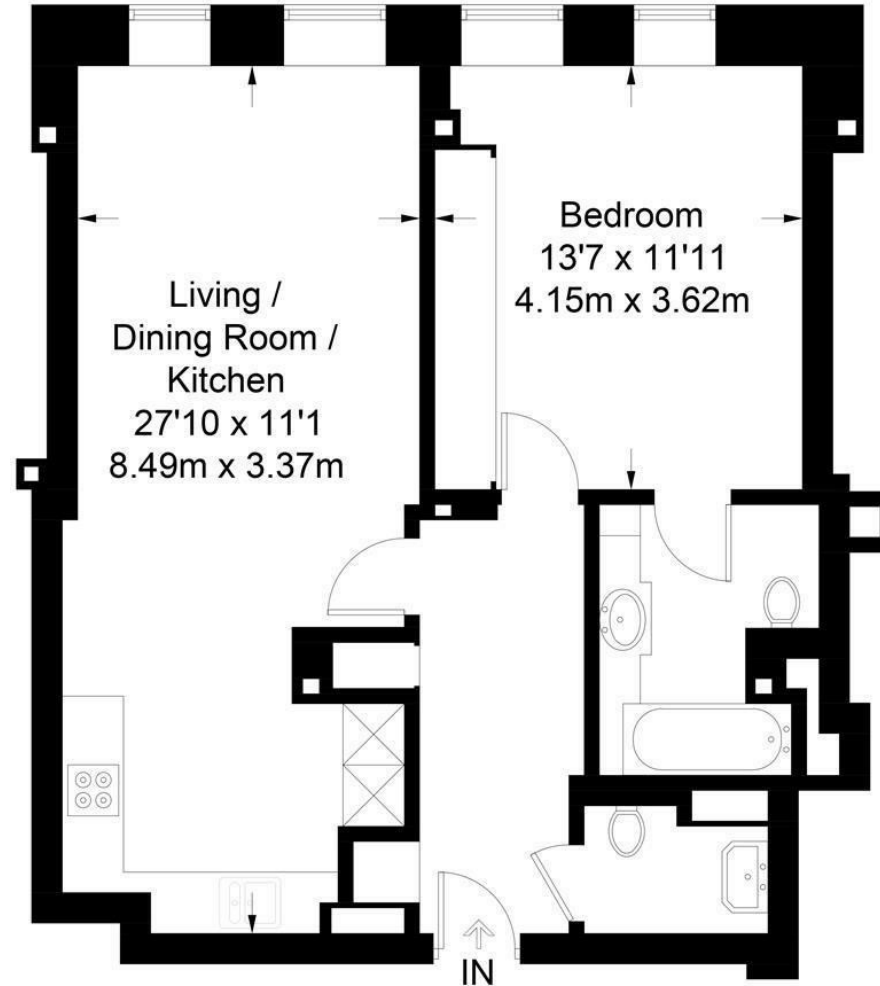
8 Gatliff Road
Grosvenor
Waterside
Chelsea
London
SW1W 8DP

Sales +44 (0) 20 7730 5007
gws@gartonjones.com
www.gartonjones.com



Chantrey House

Approximate Gross Internal Area = 641 sq ft / 59.5 sq m



Not to scale, for guidance only and must not be relied upon as a statement of fact.
All measurements and areas are approximate only and have been prepared in accordance with the current edition of the RICS Code of Measuring Practice.

