



\* Available Mid August \* Apply for viewing via email on Rightmove Only \* Open plan studio apartment offering internal storage, a modern fitted kitchen and a three piece bathroom. Located close to bus connections and Rochford Train Station.

- Available Mid August
- Please Fill Out the Online Application Form Through Rightmove
- Open Plan Living Space
- Modern Kitchen
- Sectioned Bedroom Area
- Three Piece Bathroom
- Double Glazing
- Electric Storage Heaters
- No Pets
- Working Tenants Only

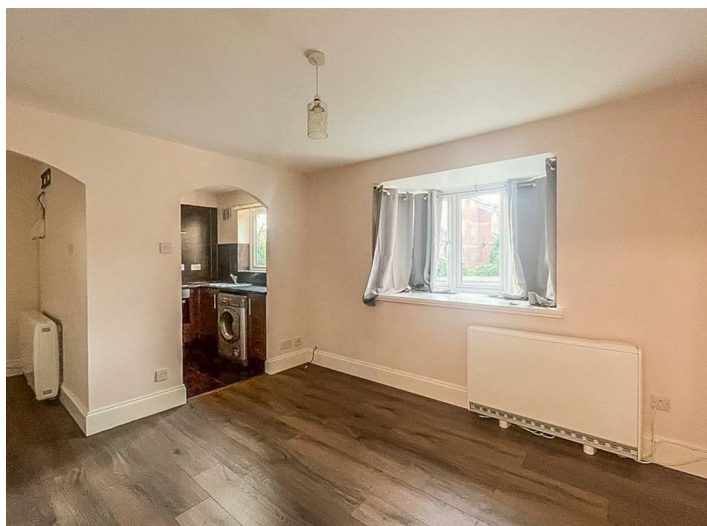
## Parklands

Rochford

**£900**



# Parklands



Bear Lettings are please to offer this open plan studio style flat in Rochford. The property offers a bay fronted living space that leads into a modern kitchen, as well as a separate open bedroom area. Further benefits include storage space and a good-sized bathroom.

The property is situated in the heart of Rochford, close to amenities, parks, bus links and Rochford Train Station.

## **Entrance Hall**

## **Living Room**

13'2 x 11'9

## **Kitchen**

7'7 x 6'7

## **Bedroom Area**

9'2 x 6'5

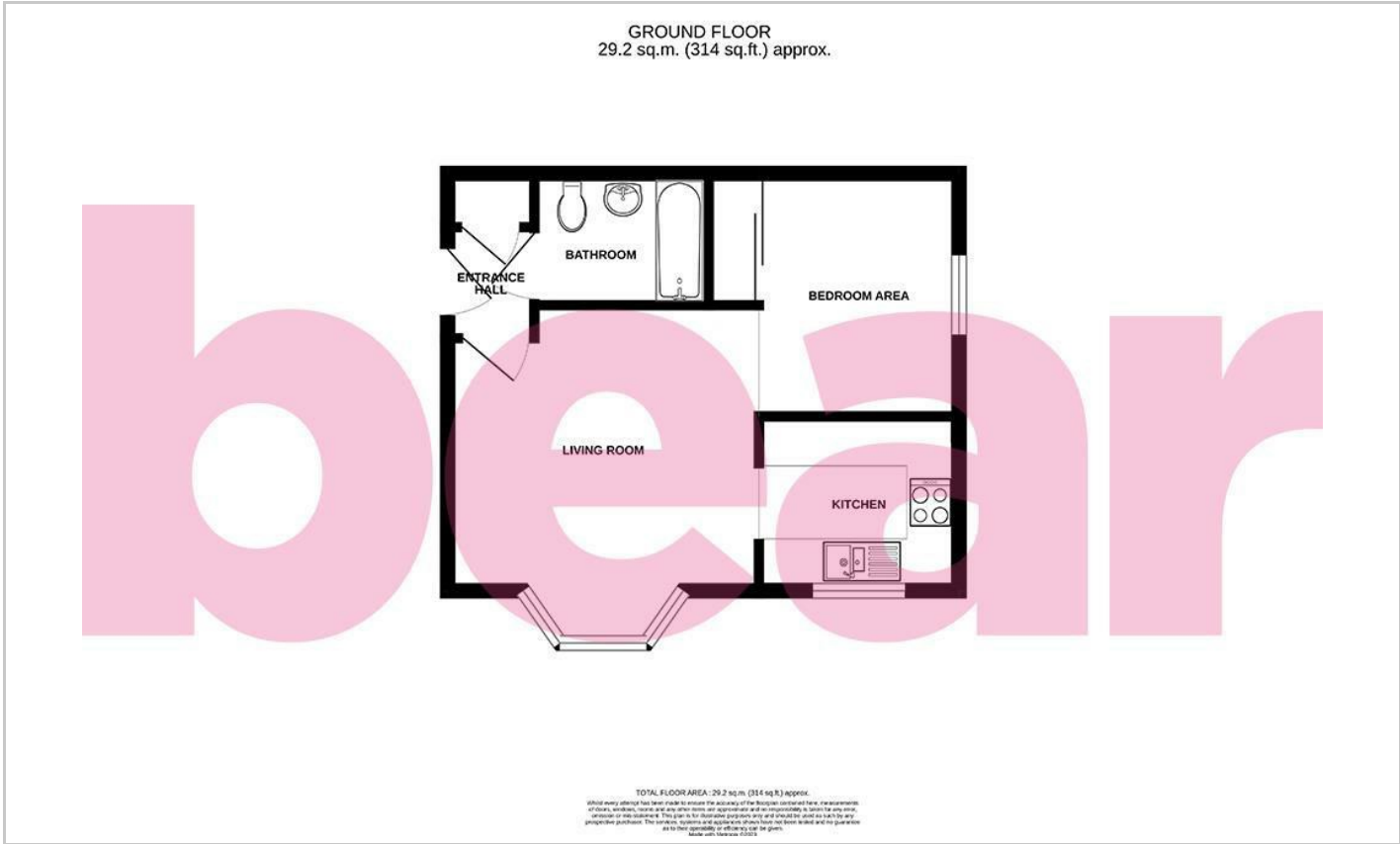
Built in wardrobes

## **Bathroom**

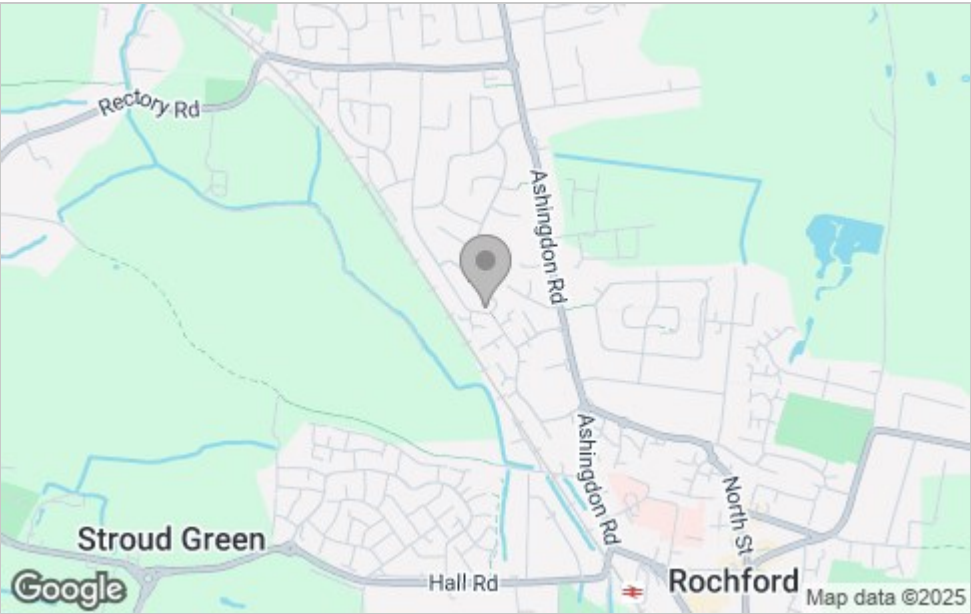




Floor Plan



Area Map



Viewing

Please contact our Southend-on-Sea Office on 01702 899 780 if you wish to arrange a viewing appointment for this property or require further information.

These particulars, whilst believed to be accurate are set out as a general outline only for guidance and do not constitute any part of an offer or contract. Intending purchasers should not rely on them as statements of representation of fact, but must satisfy themselves by inspection or otherwise as to their accuracy. No person in this firm's employment has the authority to make or give any representation or warranty in respect of the property.

204 Woodgrange Drive, Southend-on-Sea, Essex, SS1 2SJ

Office: 01702 899 780 [info@bearlettings.co.uk](mailto:info@bearlettings.co.uk)

Energy Efficiency Graph

