



One Bedroom flat to let in the heart of Southend-on-Sea just minutes from the city centre. Provides access to amenities and convenient travel links.

- Flat to Let
- Spacious Lounge
- Three Piece Bathroom and a WC
- Gas Central Heating
- One Double Bedroom
- Good-Sized Kitchen
- Double Glazing

## Central Avenue

Southend-on-Sea

**£850 PCM**

PCM



1



0



0



E

# Central Avenue



New to the market is this one bedroom first floor flat. The property is ideally located close to convenient bus links, the A127 and train lines for direct links to London. Also within the area, you will find local parks, amenities and the picturesque seafront.

The property itself is in good condition with the accommodation comprising a spacious lounge, a good-sized kitchen, one bedroom, a three piece bathroom and a WC.

## **One Bedroom Flat**

### **Landing**

### **Lounge**

### **Kitchen**

### **Bedroom**

### **Bathroom**

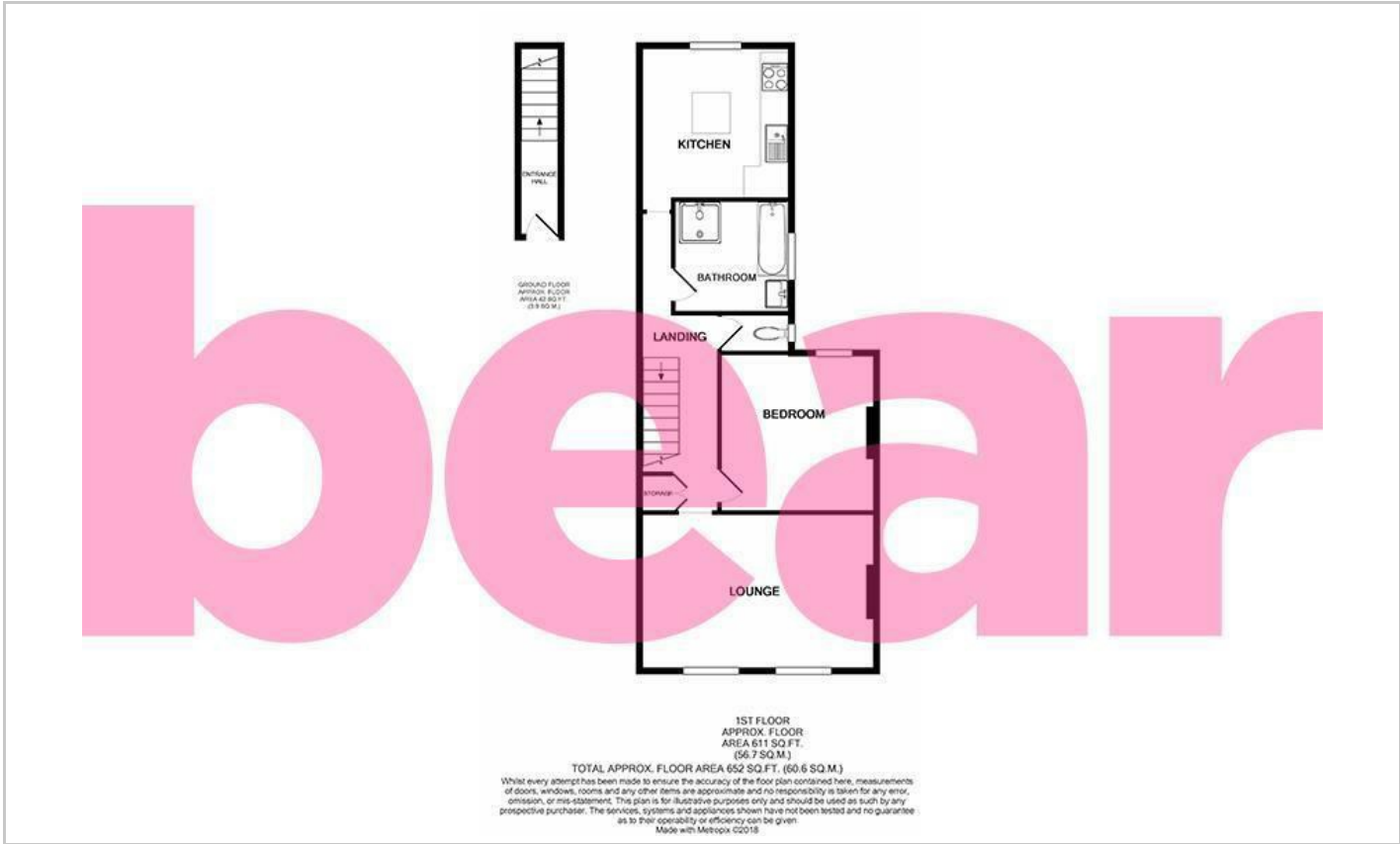
### **WC**

### **Storage**

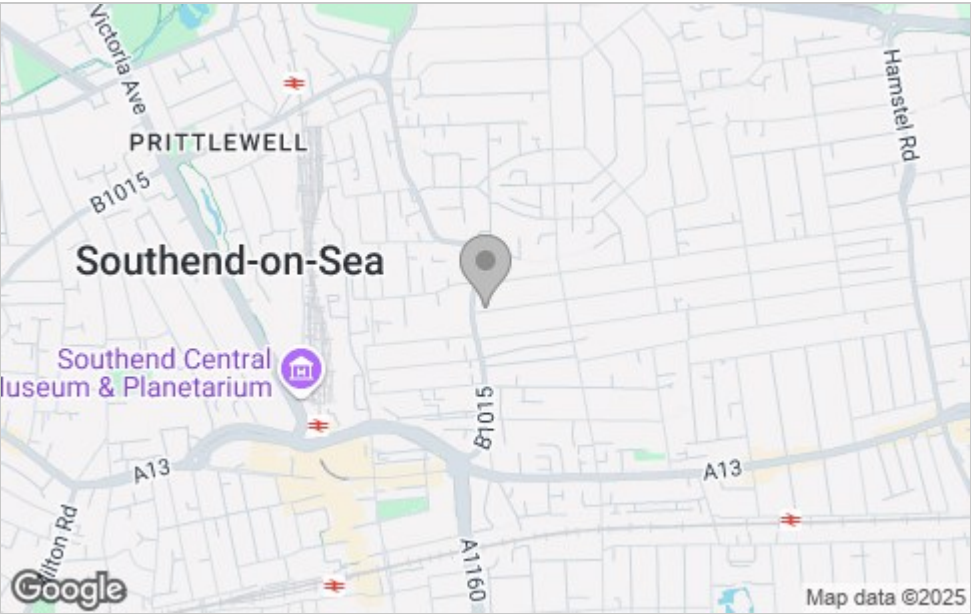




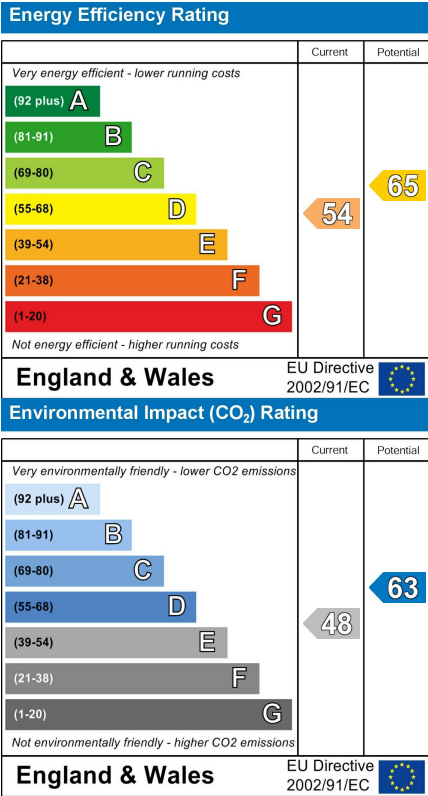
Floor Plan



Area Map



Energy Efficiency Graph



Viewing

Please contact our Southend-on-Sea Office on 01702 899 780 if you wish to arrange a viewing appointment for this property or require further information.

These particulars, whilst believed to be accurate are set out as a general outline only for guidance and do not constitute any part of an offer or contract. Intending purchasers should not rely on them as statements of representation of fact, but must satisfy themselves by inspection or otherwise as to their accuracy. No person in this firms employment has the authority to make or give any representation or warranty in respect of the property.

204 Woodgrange Drive, Southend-on-Sea, Essex, SS1 2SJ

Office: 01702 899 780 [info@bearlettings.co.uk](mailto:info@bearlettings.co.uk)