



* To request a viewing, please fill out the application form by clicking request details or email agent * Beautifully presented three bedroom terraced family home in Westcliff-on-Sea offering two reception rooms, a kitchen and a well-landscaped garden. Positioned close to amenities and travel links.

- Available Early November
- Two Reception Rooms
- No Pets
- Spacious Garden with Decking
- Gas Central Heating
- Terraced Family Home
- Good-Sized Kitchen
- Three Piece Bathroom
- Double Glazing

Beedell Avenue

Westcliff-on-Sea

£1,750 PCM

PCM

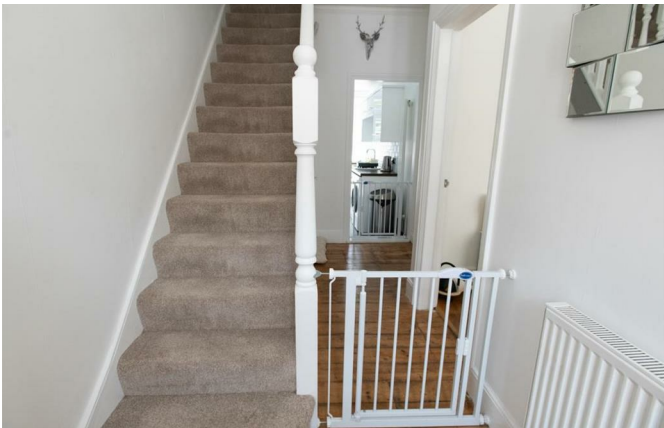


Beedell Avenue



Bear Lettings are proud to present this three bedroom terraced house in Westcliff-on-Sea, located close to an abundance of local shops and eateries. Also within the area, you will find excellent parks and the seafront, along with well-regarded schools and excellent grammar schools. There are convenient bus links close by, along with access to London Road and Westcliff Train Station.

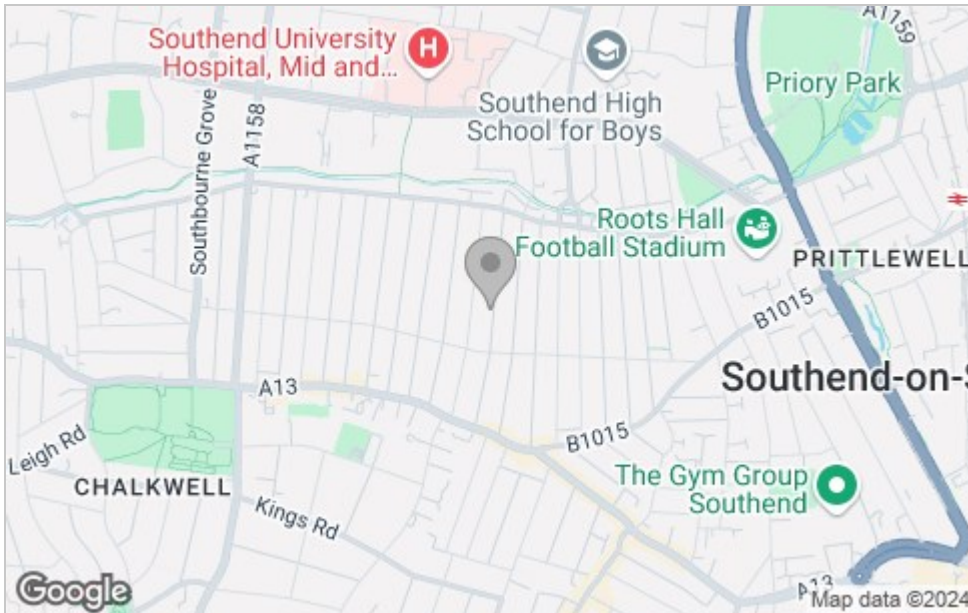
The property has been presented to a high standard throughout and has been beautifully presented throughout. Internally, the ground floor comprises a bay fronted lounge, a dining room and a good-sized kitchen. There are three bedrooms on the first floor, along with a three piece bathroom. Externally, you will find a spacious laid to lawn garden that has a decked seating area.



Floor Plan



Area Map



Viewing

Please contact our Southend-on-Sea Office on 01702 899 780 if you wish to arrange a viewing appointment for this property or require further information.

These particulars, whilst believed to be accurate are set out as a general outline only for guidance and do not constitute any part of an offer or contract. Intending purchasers should not rely on them as statements of representation of fact, but must satisfy themselves by inspection or otherwise as to their accuracy. No person in this firm's employment has the authority to make or give any representation or warranty in respect of the property.

204 Woodgrange Drive, Southend-on-Sea, Essex, SS1 2SJ

Office: 01702 899 780 info@bearlettings.co.uk

Energy Efficiency Graph

