



* TWO REQUEST A VIEWING, PLEASE EMAIL AGENT OR REQUEST DETAILS ONLINE * Bear Lettings are absolutely thrilled to bring to the market this deceptively spacious two double bedroom first floor, (top floor) flat which is situated within the highly sought-after area of Kingswood and positioned perfectly for the town centre and rail links direct into London.

- To Request a Viewing, Please Email Agent or Request Details Online
- Kitchen 8' x 6'6
- Inner Hallway
- Bathroom Suite 6'7 x 5'4
- Great Condition Throughout
- Striking & Spacious Entrance Hall Complete With Two Large Storage Cupboards
- Lounge/Diner 13'3 x 12'9 With Balcony 11' x 3'3
- Master Bedroom 13'8 x 9'7 Plus Bedroom Two 9'9 x 8'10
- Communal Entrance Area With Stairs Leading To Own Front Door
- Walking Distance To Basildon Town Centre & Rail Links Direct Into London

Langleys

Basildon

£1,375 Per Calendar Month

Per Calendar Month



Langleys



Internally the new owner will be welcomed into the communal entrance hall with stairs leading to your own front door.

Once through your own front door you will be greeted by the striking and spacious entrance hall complete with two large storage cupboards.

The smart kitchen suite measures 8' x 6'6 and provides ample worktop space and storage space.

Alongside the kitchen is the sizeable lounge come diner which measures a generous 13'3 x 12'9 and provides the perfect environment in which to both entertain and relax. You also have your own outside space off of the lounge come diner via the private balcony, 11' x 3'3 currently set up with a table and set of chairs.

There is an inner hallway with two further areas of storage and the inner hallway provides access to the two double bedrooms and the family bathroom suite.

The master bedroom measures 13'8 x 9'7 and sits alongside bedroom two which measures an equally pleasing 9'9 x 8'10.

Completing the living accommodation is the bathroom suite which measures 6'7 x 5'4 complete with W/C, washbasin, and bathtub with overhead shower.

Situated within the popular and incredibly family-friendly Kingswood location the property is just a very short walk from Basildon town centre and rail links direct into London. The location is as close to perfect as you could hope for with an abundance of amenities on your doorstep.

Council Tax Band A

Communal Entrance Hall

With Stairs Leading To First Floor & Own Front Door

Striking & Spacious Entrance Hall

Two Storage Cupboards To Entrance Hall

Kitchen

8' x 6'6

Lounge/Diner

13'3 x 12'9

Balcony

11' x 3'3

Inner Hallway

Master Bedroom

13'8 x 9'7

Bedroom Two

9'9 x 8'10

Bathroom Suite

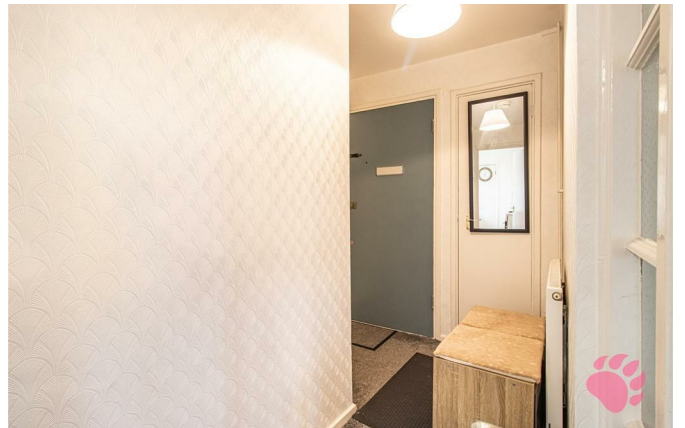
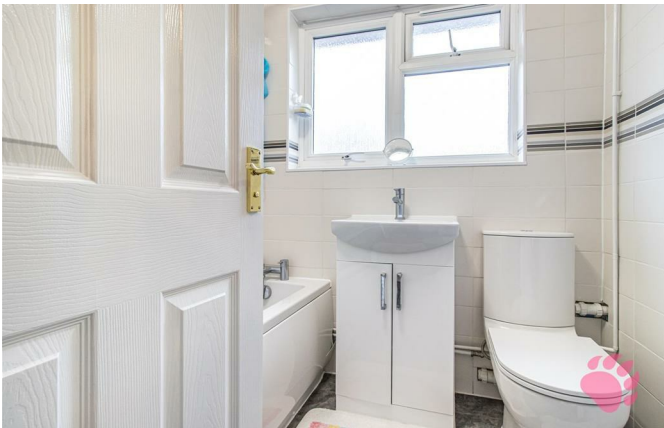
6'7 x 5'4

Great Condition Throughout

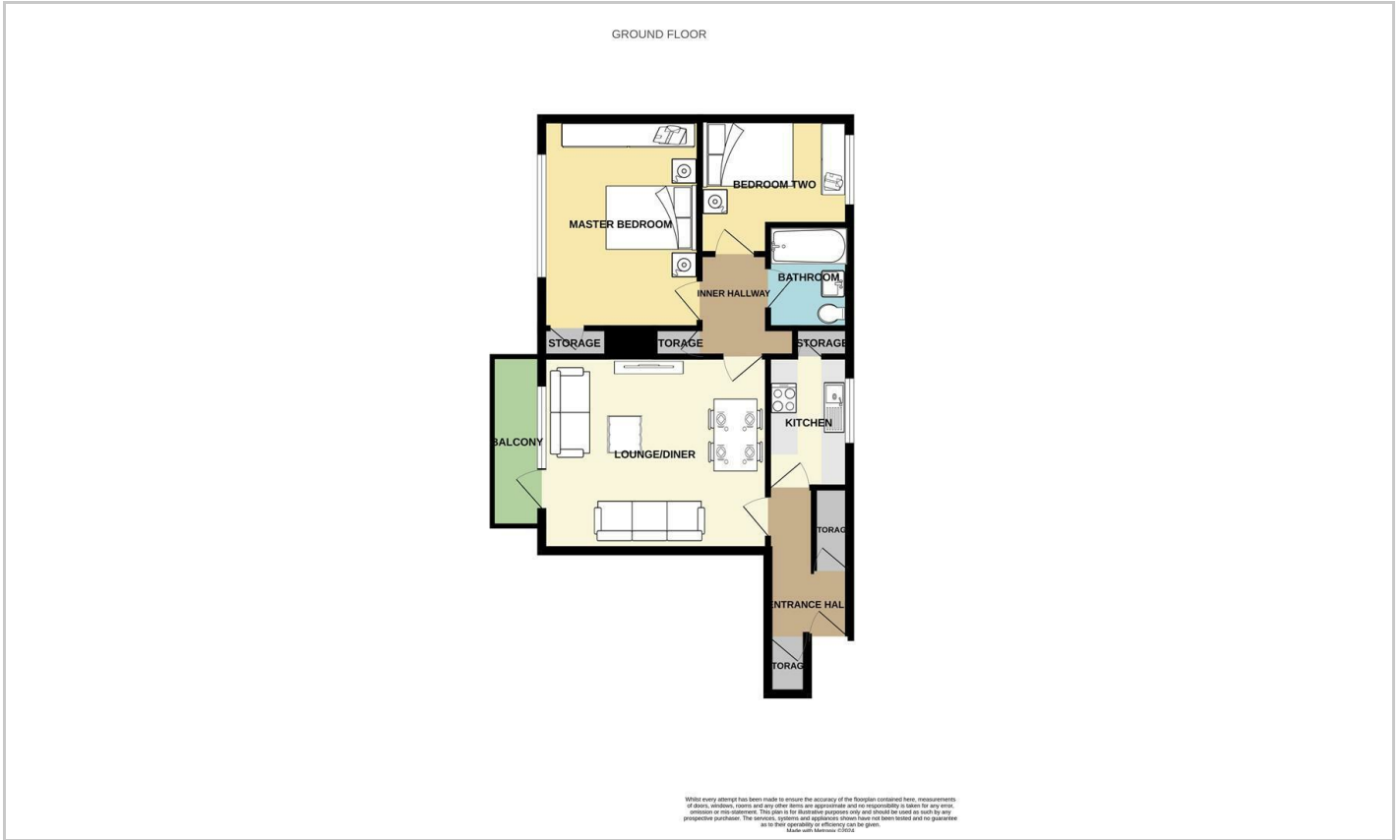
Popular & Family Friendly Location

Walking Distance To Town Centre

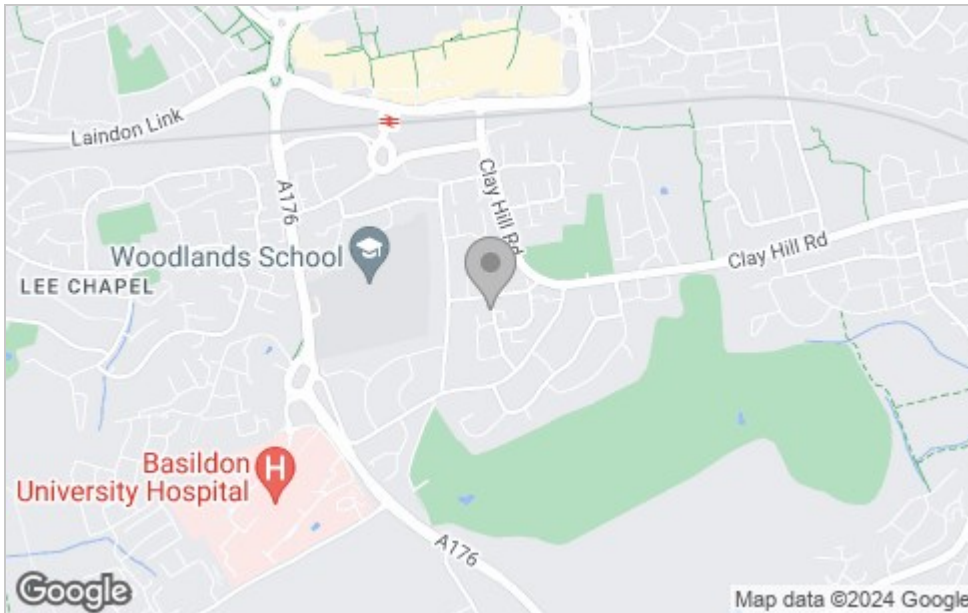
Walking Distance To Rail Links Into London



Floor Plan



Area Map



Viewing

Please contact our Southend-on-Sea Office on 01702 899 780 if you wish to arrange a viewing appointment for this property or require further information.

These particulars, whilst believed to be accurate are set out as a general outline only for guidance and do not constitute any part of an offer or contract. Intending purchasers should not rely on them as statements of representation of fact, but must satisfy themselves by inspection or otherwise as to their accuracy. No person in this firm's employment has the authority to make or give any representation or warranty in respect of the property.

Beech House, 1 Journeymans Way, Temple Farm Industrial Estate, Southend-on-Sea, Essex, SS2 5TF

Office: 01702 899 780 info@bearlettings.co.uk

Energy Efficiency Graph

