

3rd Floor, Fitzroy House, Crown Street, Ipswich, Suffolk, IP1 3LG



To Let

- Entire third floor of prominent office building on edge of town centre.
- 3,186 sq. ft. (296 sq. m.)
- Onsite parking for 2 vehicles.
- Shared ground floor reception facilities available.
- Available on a new lease.

Self Contained
Open Plan
Office Suite



- **Most Active Agent Essex** 2019, 2020, 2021 & 2022
- **Most Active Agent Suffolk** 2020 & 2022
- **Dealmaker of the Year Essex** 2019 & 2020
- **Dealmaker of the Year Suffolk** 2020
- **Dealmaker of the Year South East** 2021 & 2022



RICS

the mark of
property
professionalism
worldwide

Details

Location

Ipswich is the county town of Suffolk with a resident population of approximately 130,000. The A12 and A14 dual carriageways provide excellent road communications with the M25, London and the Midlands. Ipswich railway station provides a regular service to London (Liverpool Street) with a journey time of approximately 1 hour 10 minutes.

Fitzroy House occupies a prominent position on the corner of Crown Street and High Street, the central retail and commercial districts being situated directly to the south. There are a number of public car parks within the immediate area and the town's northern bus station is just a short walk away.

Description

Fitzroy House is a modern four storey office building, the ground to second floors being occupied by Scrutton Bland LLP.

The third floor suite is accessed via stairs and an 8-person passenger lift from the ground floor reception. The suite provides predominantly open plan accommodation with high quality glazed partitioning creating four separate meeting rooms and private offices, kitchen and post room. The configuration of the partitioning can be adapted to meet the ingoing tenants requirements.

The specification of the premises includes:

- ◆ Suspended ceilings with recessed lighting;
- ◆ Air conditioning;
- ◆ Raised floor with floor boxes;
- ◆ Double glazing and window blinds.

Male and female WC facilities are situated adjacent to the entrance to the suite and two onsite parking spaces are available to the ingoing tenant.

Accommodation

The premises provide a total net internal floor area of approximately 3,186 sq. ft. (296 sq. m.)

Services

The premises are served by mains electricity, water and drainage.

We have not tested any of the services and all interested parties should rely upon their own enquiries with the relevant utility companies in connection with the availability and capacity of all of those serving the property including IT and telecommunication links.

Business Rates

The premises are currently assessed as follows:

Rateable Value £44,750.00
Rates Payable (2023/24) £22,330.25 p.a.

Local Authority

Ipswich Borough Council, Grafton House,
15-17 Russell Road, Ipswich, Suffolk, IP1 2DE

Telephone: 01473 432000

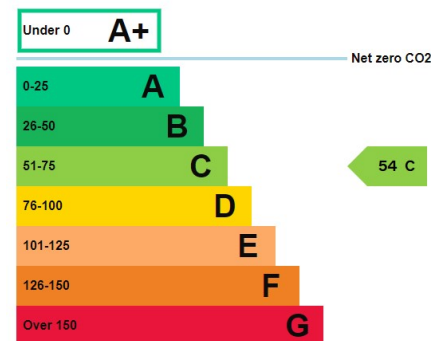
Terms

The premises are available upon a new full repairing and insuring business lease upon terms to be agreed and at an initial rent of £49,500 per annum exclusive.

The rent will be subject to VAT at the standard rate.

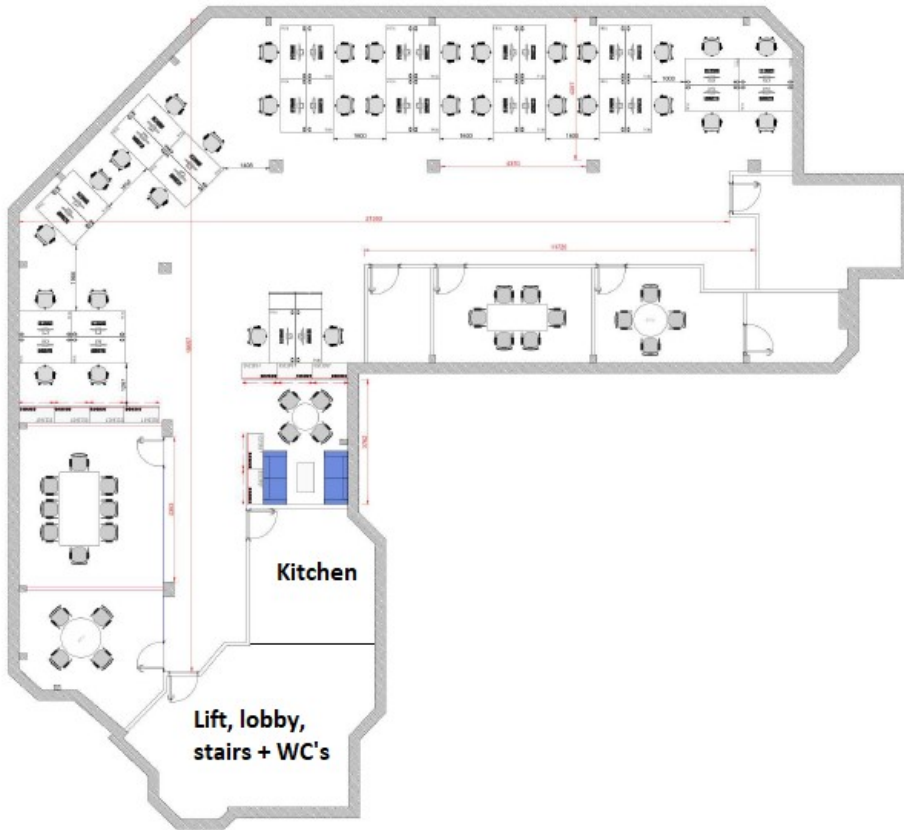
Energy Performance Certificate

EPC rating of 54(C)



Legal Costs

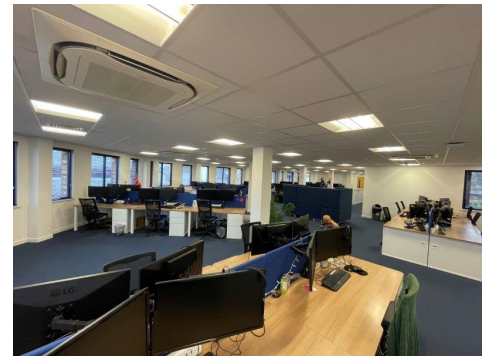
Each party will be responsible for their own legal costs.



Ground floor reception



Third floor lobby area



Third floor office suite



Meeting room



Kitchen

NOT TO SCALE - FOR IDENTIFICATION PURPOSES ONLY

Particulars

Prepared January 2024

Viewing

Strictly by prior appointment with the sole agents:

Fenn Wright

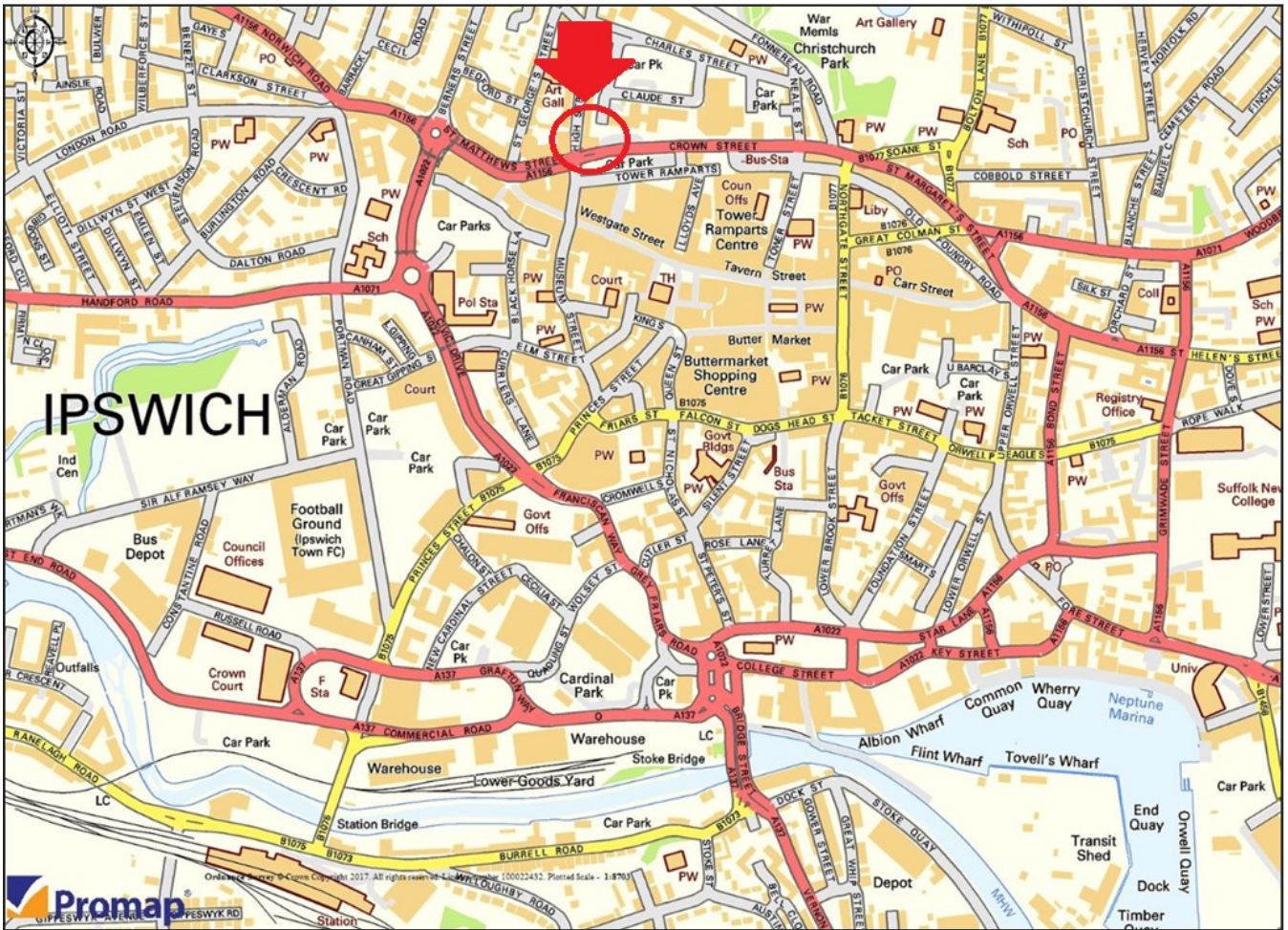
1 Buttermarket, Ipswich, IP1 1BA

01473 232 701

fennwright.co.uk

Contact **Alistair Mitchell**

agm@fennwright.co.uk



For further information call

01473 232 701

or visit fennwright.co.uk

Fenn Wright for themselves and for the vendors or lessors of this property whose agents they are give notice that:

- i. The particulars are set out as a general outline for the guidance of intending purchasers or lessees; and do not constitute, nor constitute part of, an offer or contract.
- ii. All descriptions, dimensions, references to condition and necessary permissions for use and occupation, and other details are given in good faith and are believed to be correct but any intending purchasers or lessees should not rely on them as statements or representations of fact but must satisfy themselves by inspection or otherwise as to the correctness of each of them.
- iii. The vendor or lessor does not make or give, and neither Fenn Wright nor any person in their employment has the authority to make or give, any representation or warranty whatsoever in relation to this property.
- iv. All statements contained in these particulars as to this property are made without responsibility on the part of Fenn Wright or the vendor/lessor.
- v. All quoting terms may be subject to VAT at the prevailing rate from time to time.
- vi. Fenn Wright have not tested any electrical items, appliances, any plumbing or heating systems and therefore, cannot give any warranty or undertaking as regards their operation or efficiency.

Fenn Wright is a Limited Liability Partnership, trading as Fenn Wright. Registered in England under no. OC431458. Registered office: 1 Tollgate East, Stanway, Colchester, Essex, CO3 8RQ. A list of members is open to inspection at our offices.

