



Matlock Close | Walsall | WS3 3QE

Asking Price £180,000



Summary

****GENEROUS THREE BEDROOM HOME**MODERNISED THROUHGOUT**MODERN FITTED KITCHEN AND BATHROOM**TWO RECPETION ROOMS**THREE GOOD SIZED BEDROOMS**LANDSCAPED REAR GARDEN**POPULAR LOCATION**CUL-DE-SAC**VIEWING ADVISED****

Nestled in the desirable Matlock Close, Walsall, this charming terraced house presents an excellent opportunity for first-time buyers or investors alike. Located in a peaceful cul-de-sac, the property is conveniently close to a variety of local amenities, including shops, schools, and transport links, ensuring that everything you need is within easy reach.

Upon entering, you are welcomed by an inviting entrance hall that leads to a spacious lounge, complete with patio doors that open onto the rear garden, allowing for a seamless flow of natural light. The separate dining room provides an ideal space for family meals or entertaining guests, while the refitted kitchen boasts modern conveniences that cater to today's lifestyle.

The first floor features a contemporary family bathroom, thoughtfully designed for comfort and functionality. Three generously proportioned bedrooms offer ample space for relaxation and rest, making this home perfect for families or those seeking extra room.

The exterior of the property is equally appealing, with a lawned front garden that holds potential for a driveway, subject to the necessary planning permissions. The rear garden is a low-maintenance

Key Features

- MODERNISED THREE BEDROOM HOME
- MODERN FITTED BATHROOM
- TWO RECPETION ROOMS
- PERFECT FIRST TIME BUY OR INVESTMENT
- CLOSE TO ALL LOCAL AMENITIES
- MODERN FITTED KITCHEN
- LANDSCAPED LOW MAINTANCE REAR GARDEN
- HIGHLTY SOUGHT AFTER LOCATION
- VIEWING HIGHLY ADVISED
- CALL WEBBS TO SECURE YOUR VIEWING ON 01922 663399!!

Rooms and Dimensions

Entrance Hall

Lounge

12'9" x 12'1" (3.901m x 3.689m)

Dining Room

12'7" x 9'9" (3.847m x 2.983m)

Kitchen

19'3" x 6'4" max (5.887m x 1.949m max)

First Floor Landing

Bedroom One

13'0" x 11'0" (3.963m x 3.375m)

Bedroom Two

12'9" x 8'4" (3.898m x 2.565m)

Bedroom Three

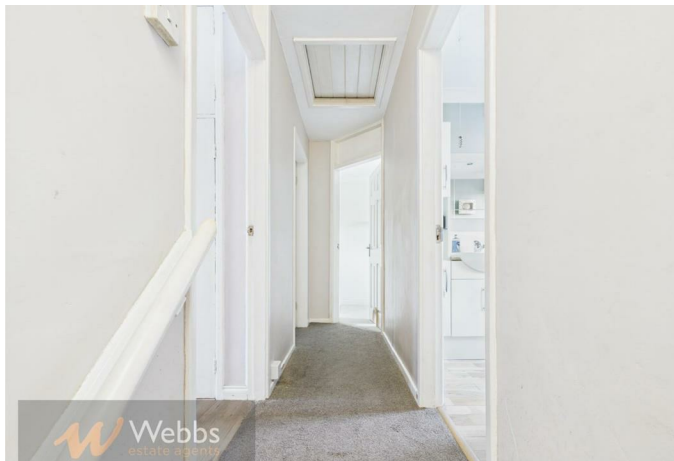
7'11" x 8'9" (2.432m x 2.674m)

Family Bathroom

6'7" x 8'2" (2.031m x 2.513m)

Identification Checks B

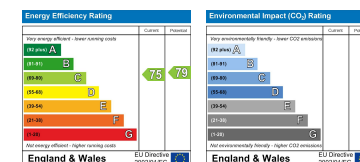






Webbs
estate agents

Webbs Estate Agents - endeavour to maintain accurate depictions of properties in Virtual Tours, Floor Plans and descriptions, however, these are intended only as a guide and purchasers must satisfy themselves by personal inspection.



212 High Street, Bloxwich, Walsall, WS3 3LA

Tel: 01922 663399 | Email: bloxwich@webbestateagents.co.uk | www.webbestateagents.co.uk

Webbs
estate agents