



Oak Crescent | Walsall | WS3 1BQ

Asking Price £190,000



Summary

****FULLY RENOVATED**TWO BEDROOMS**REFITTED KITCHEN**REFITTED BATHROOM**GUEST WC**GATED DRIVEWAY**LARGE LANDSCAPED AND LOW MAINTAINANCE REAR GARDEN**TWO DOUBLE BEDROOMS**POPULAR LOCATION**NO ONWARD CHAIN****

Nestled in a sought-after location close to local amenities, schools, and transport links, this beautifully renovated two-bedroom home offers stylish and modern living, perfect for first-time buyers, downsizers, or investors.

The property is set behind a large, gated driveway providing ample off-road parking. A canopied entrance adds character and shelter, leading into a welcoming hallway that sets the tone for the rest of the home.

The bright and spacious lounge offers a comfortable living space, ideal for relaxing and entertaining. The newly refitted kitchen is modern and well-equipped, featuring a range of stylish units, ample worktop space. There is also a useful under-stairs storage cupboard and a convenient guest WC.

Upstairs, two generously sized double bedrooms provide comfortable accommodation, both benefiting from plenty of natural light. The beautifully refitted bathroom is finished to a high standard,

Key Features

- FULLY RENOVATED
- REFITTED BATHROOM
- LARGE GATED DRIVEWAY
- POPULAR LOCATION
- VIEWING IS ESSENTIAL
- REFITTED KITCHEN
- GUEST WC
- LANDSCAPED REAR GARDEN
- CLOSE TO ALL LOCAL AMENITIES
- CALL WEBBS ON 01922 63399 TO SECURE YOUR VIEWING TODAY!!!

Rooms and Dimensions

Identification Checks B

Entrance Hall

Lounge

13'2" x 12'11" (4.016m x 3.945m)

Refitted Kitchen

13'11" x 8'3" (4.260m x 2.537m)

Guest WC

First Floor Landing

Bedroom One

17'1" x 10'1" (5.227m x 3.083)

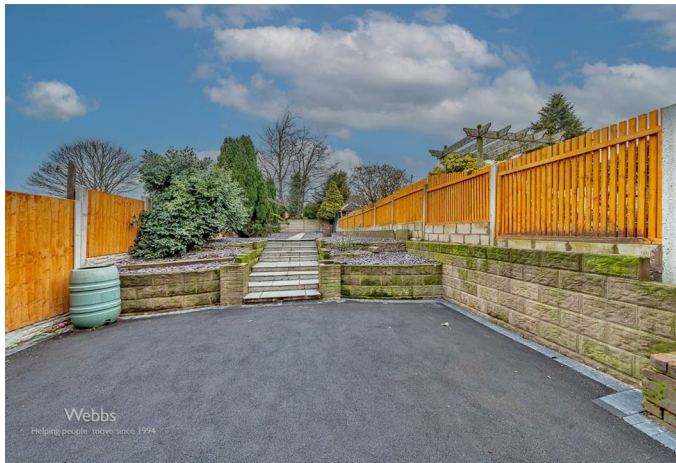
Bedroom Two

7'7" x 11'8" (2.312m x 3.564m)

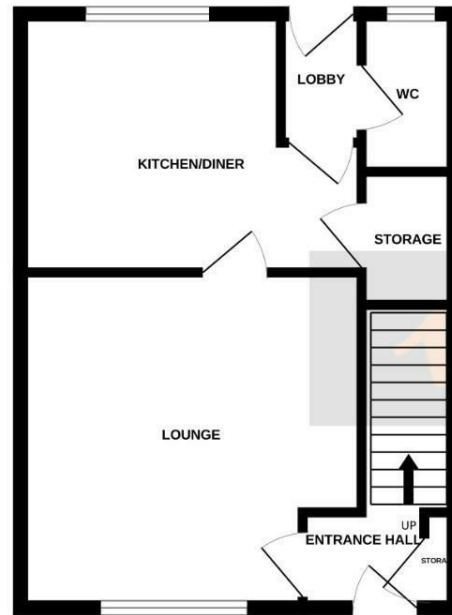
Bathroom

7'9" x 8'11" (2.371m x 2.735m)

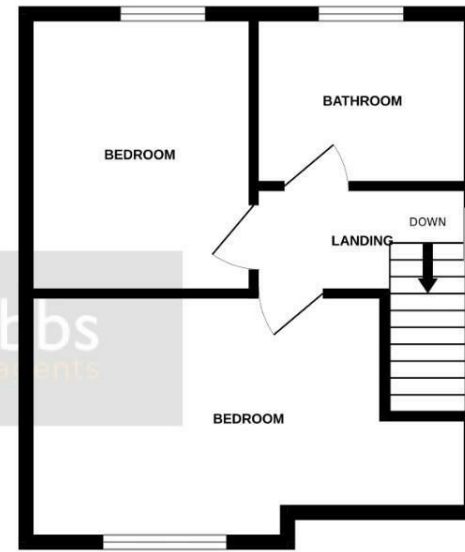




GROUND FLOOR

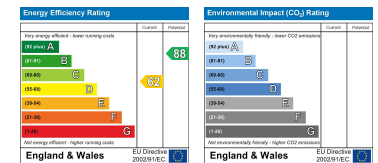


1ST FLOOR



Whilst every attempt has been made to ensure the accuracy of the floorplan contained here, measurements of doors, windows, rooms and any other items are approximate and no responsibility is taken for any error, omission or mis-statement. This plan is for illustrative purposes only and should be used as such by any prospective purchaser. The services, systems and appliances shown have not been tested and no guarantee as to their operability or efficiency can be given.
Made with Metropix 6/2025

Webbs Estate Agents - endeavour to maintain accurate depictions of properties in Virtual Tours, Floor Plans and descriptions, however, these are intended only as a guide and purchasers must satisfy themselves by personal inspection.



212 High Street, Bloxwich, Walsall, WS3 3LA

Tel: 01922 663399 | Email: bloxwich@webbestateagents.co.uk | www.webbestateagents.co.uk