



Webbs  
Helping people move since 1994

**Spindle Tree Rise | Willenhall | WV12 4BP**  
**Offers In The Region Of £225,000**

 **Webbs**  
estate agents



## Summary

**\*\* VERY WELL PRESENTED END TERRACE FAMILY HOME \*\* POPULAR LOCATION \*\* VIEWING ADVISED \*\* THREE BEDROOMS \*\* FAMILY BATHROOM \*\* SPACIOUS LIVING ROOM \*\* GARDEN /HOBBY ROOM \*\* REFITTED KITCHEN / DINER \*\* AMPLE DRIVEWAY PARKING \*\* ENCLOSED REAR GARDEN \*\* UPVC DOUBLE GLAZED \*\* GAS CENTRAL HEATING \*\***

Webbs Estate Agents have pleasure in offering for sale this very well presented end terraced family home, situated on a popular residential development, being close to all local amenities, shops and schools. Briefly comprising: hallway, living room, refitted breakfast kitchen/diner and guest cloaks. To the first floor, the landing leads to three bedrooms, and a family bathroom. Externally there is ample driveway parking and an enclosed rear garden. EARLY VIEWING IS ADVISED!

## Key Features

- VERY WELL PRESENTED END TERRACE
- 3 BEDROOMS
- REFITTED KITCHEN / DINER
- GUEST WC
- DRIVEWAY PARKING & GARDENS
- POPULAR LOCATION CLOSE TO AMENITIES
- LIVING ROOM
- FAMILY BATHROOM
- UPVC DG & GCH
- EARLY VIEWING ESSENTIAL

## Rooms and Dimensions

### Premium Conveyancing

#### ENTRANCE HALL

#### LIVING ROOM

16'4" x 11'6" (4.98 x 3.52)

#### REFITTED KITCHEN/DINER

14'9" x 8'5" (4.52 x 2.57)

#### WC

5'5" x 3'0" (1.66 x 0.92)

#### FIRST FLOOR LANDING

#### BEDROOM ONE

12'0" x 8'2" (3.67 x 2.51)

#### BEDROOM TWO

7'9" x 6'3" (2.37 x 1.91)

#### BEDROOM THREE

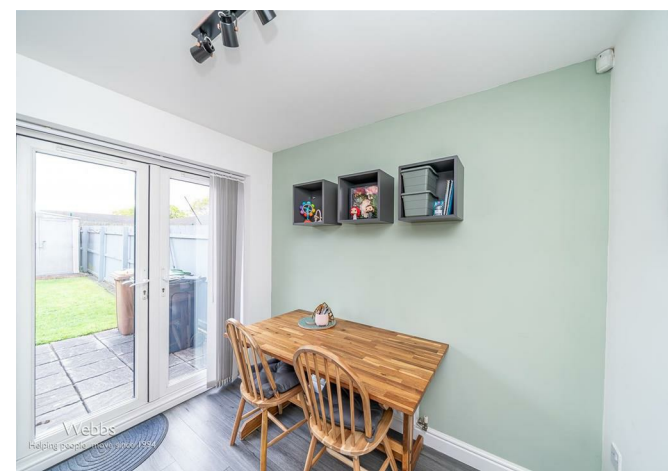
9'6" x 8'3" (2.92 x 2.52)

#### FAMILY BATHROOM

6'5" x 6'2" (1.96 x 1.89)

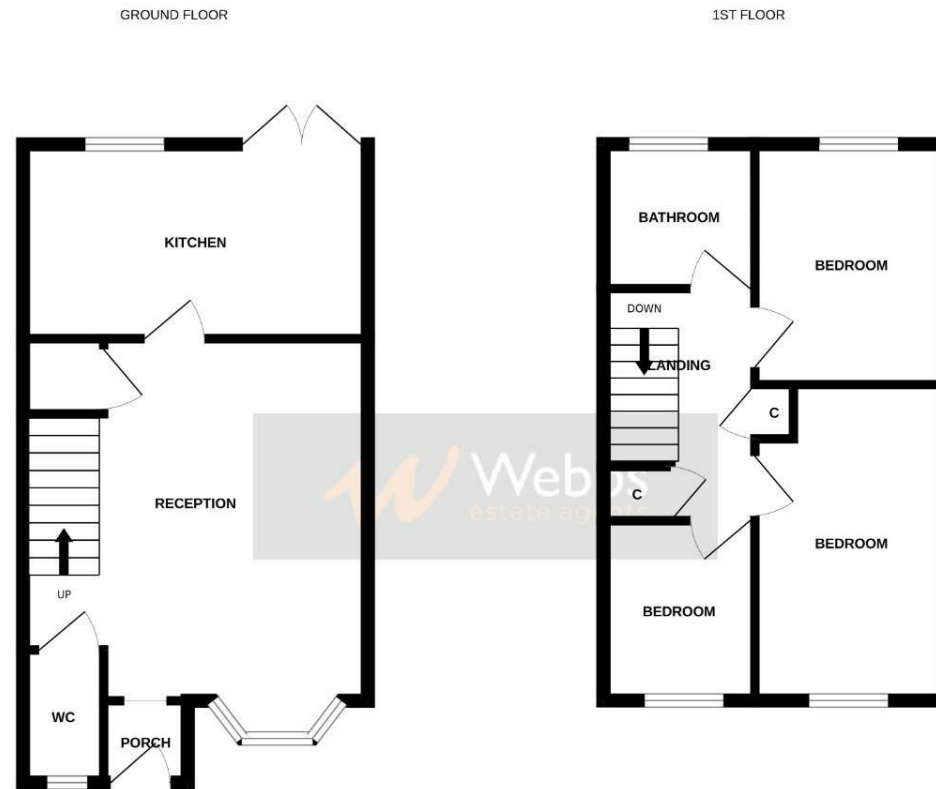
#### OUTSIDE

#### Identification Checks



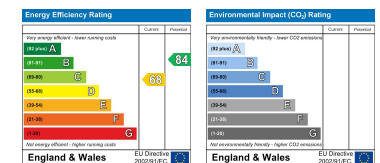






Whilst every attempt has been made to ensure the accuracy of the floorplan contained here, measurements of doors, windows, rooms and any other items are approximate and no responsibility is taken for any error, omission or mis-statement. This plan is for illustrative purposes only and should be used as such by any prospective purchaser. The services, systems and appliances shown have not been tested and no guarantee as to their operability or efficiency can be given.  
Made with Metropix 62025

Webbs Estate Agents - endeavour to maintain accurate depictions of properties in Virtual Tours, Floor Plans and descriptions, however, these are intended only as a guide and purchasers must satisfy themselves by personal inspection.



212 High Street, Bloxwich, Walsall, WS3 3LA

Tel: 01922 663399 | Email: [bloxwich@webbestateagents.co.uk](mailto:bloxwich@webbestateagents.co.uk) | [www.webbestateagents.co.uk](http://www.webbestateagents.co.uk)

