



Turnstone Road | Walsall | WS3 1EQ
Asking Price £240,000



Summary

****FOUR BEDROOM SEMI DETACHED HOME** DRIVEWAY**KITCHEN DINER**GUEST WC**EN SUITE TO MASTER BEDROOM**FOUR GENEROUSLY SIZED BEDROOM**POPULAR LOCATION**CLOSE TO ALL LOCAL AMENITIES**VIEWING ESSENTIAL****

Welcome to this beautifully presented four-bedroom semi-detached home on Turnstone Road, offering modern living across three well-appointed floors. With a driveway to the side, this property provides both convenience and ample parking.

Upon entering, you are greeted by a welcoming entrance hall leading to a stylish kitchen diner, perfect for family meals and entertaining. A separate lounge to the rear benefits from patio doors opening onto the private, enclosed rear garden, which is thoughtfully designed across a split level.

The first-floor landing boasts a further two sizeable bedrooms, including a stunning master suite with its own en-suite shower room. The second floor landing gives access to two generous bedrooms and a contemporary family bathroom.

With a fantastic layout, modern finishes, and excellent outdoor space, this home is ideal for families or professionals seeking comfort and style. Don't miss the opportunity to make this wonderful property your own!

Call Webbs on 01922 663399 to secure your viewing today!!!

Key Features

- FOUR BEDROOM SEMI DETACHED HOME
- DRIVEWAY TO THE SIDE
- FOUR GENEROUSLY SIZED BEDROOMS
- POPULAR LOCATION
- SPLIT LEVEL REAR GARDEN
- SPREAD ACROSS THREE FLOORS
- LARGE KITCHEN DINER
- EN SUITE TO MASTER BEDROOM
- CLOSE TO ALL LOCAL AMENITIES
- CALL WEBBS TO SECURE YOUR VIEWING ON 01922 663399!!!

Rooms and Dimensions

Entrance Hall

Kitchen Diner

13'3" x 11'6" (4.045m x 3.506m)

Lounge

11'4" x 14'8" (3.462m x 4.473m)

Guest WC

3'3" x 4'8" (1.002m x 1.425m)

First Floor Landing

Bedroom Two

15'0" x 10'2" (4.575m x 3.120m)

Bedroom Three

14'8" x 9'3" (4.472m x 2.824m)

Family Bathroom

8'0" x 6'7" (2.459m x 2.019m)

Second Floor Landing

Bedroom One

14'7" x 9'0" (4.451m x 2.768m)

En Suite

5'6" x 5'6" (1.69m x 1.693m)

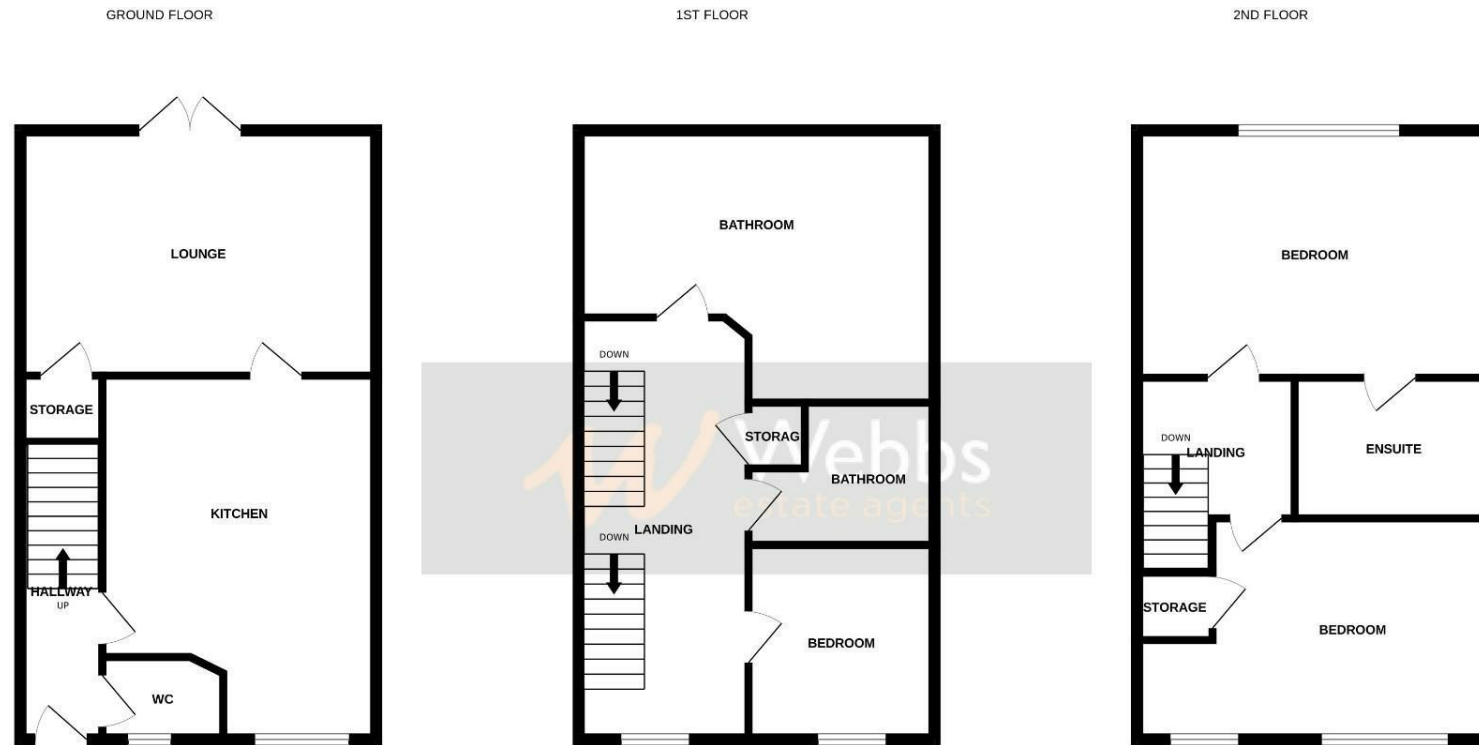
Bedroom Four

9'4" x 8'0" (2.858m x 2.449m)

Identification Checks B

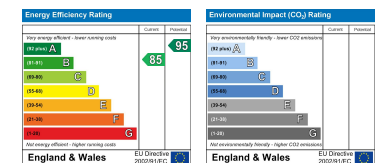






Whilst every attempt has been made to ensure the accuracy of the floorplan contained here, measurements of doors, windows, rooms and any other items are approximate and no responsibility is taken for any error, omission or mis-statement. This plan is for illustrative purposes only and should be used as such by any prospective purchaser. The services, systems and appliances shown have not been tested and no guarantee as to their operability or efficiency can be given.
Made with Metropix ©2025

Webbs Estate Agents - endeavour to maintain accurate depictions of properties in Virtual Tours, Floor Plans and descriptions, however, these are intended only as a guide and purchasers must satisfy themselves by personal inspection.



212 High Street, Bloxwich, Walsall, WS3 3LA

Tel: 01922 663399 | Email: bloxwich@webbestateagents.co.uk | www.webbestateagents.co.uk

