



Southmead Way | Walsall | WS2 8JD
Offers In The Region Of £450,000

 **Webbs**
estate agents

Summary

****HEAVILY EXTENDED FOUR BEDROOM DETACHED HOME**STUNNING BREAKFAST KITCHEN**DOWNSTAIRS SHOWER ROOM**THREE RECEPTION ROOMS**FOUR GENEROUS BEDROOMS**ENSUITE TO MASTER BEDROOM**FOUR BATHROOMS**POPULAR LOCATION**FINISHED TO A HIGH STANDARD THROUGHOUT**VIEWING ESSENTIAL**SOLAR PANNELS**FITTED SHOR CUPBOARD IN THE PORCH****

Nestled in the desirable Southmead Way, this impressive 4/5 bedroom, 4-bathroom detached home has been significantly extended to provide exceptional living space, perfect for growing families or those seeking a home with versatility. Situated close to local amenities, this property effortlessly combines comfort, style, and practicality. Upon arrival, a spacious driveway provides ample parking, leading to a welcoming porch entrance. Stepping inside, the entrance hall offers access to a modern shower room, adding convenience for guests and family members alike. To the front of the property, two generously sized lounges provide flexible living space, ideal for formal entertaining or everyday relaxation. A separate store room offers fantastic potential as a home office, study, or additional storage space, catering to modern lifestyle needs. The heart of the home lies at the rear, where a stunning refitted breakfast kitchen boasts contemporary finishes, roof lantern that floods the space with natural light. Adjacent to this, a spacious lounge-diner creates an inviting open-plan setting, perfect for family gatherings and entertaining. This well-designed layout ensures a seamless flow between cooking, dining, and social spaces.

Key Features

- HEAVILY EXTENDED FOUR BEDROOM DETACHED HOME
- THREE RECEPTION ROOMS
- EN SUITE TO MASTER BEDROOMS
- TURN KEY PROPERTY
- CLOSE TO ALL LOCAL AMENITIES
- STUNNING BREAKFAST KITCHEN
- DOWNSTAIRS SHOWER ROOM UPSTAIRS BATHROOM
- FOUR DOUBLE BEDROOMS
- POPULAR LOCATION
- CALL WEBBS ON 01922 663399 TO SECURE YOUR VIEWING TODAY!!!

Rooms and Dimensions

Identification Checks B

Entrance Porch

Hall

Lounge

18'1" x 11'2" (5.530m x 3.426m)

Snug/ Bedroom Five

15'5" x 8'1" (4.724m x 2.484m)

Stunning Extended Kitchen

17'7" x 14'5" (5.379m x 4.401m)

Lounge/Diner

22'4" x 12'1" (6.824m x 3.697m)

Shower Room

4'1" x 4'0" (1.262m x 1.240m)

Store Room

8'1" x 8'2" (2.472m x 2.504m)

First Floor Landing

Bedroom One

14'4" x 11'7" (4.391m x 3.539m)

En Suite

7'11" x 5'5" (2.424m x 1.656m)

Bedroom Two

12'0" x 10'8" (3.680m x 3.257m)

En Suite

6'1" x 5'11" (1.877m x 1.807m)

Bedroom Three

12'4" x 8'8" (3.760m x 2.65m)

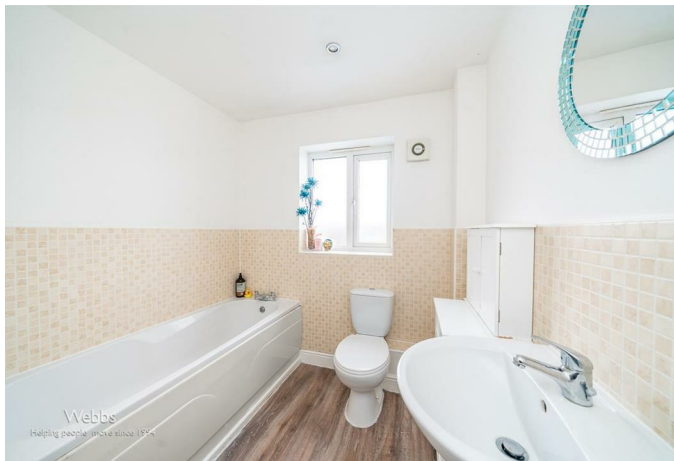
Bedroom Four

11'0" x 8'6" (3.357m x 2.594m)

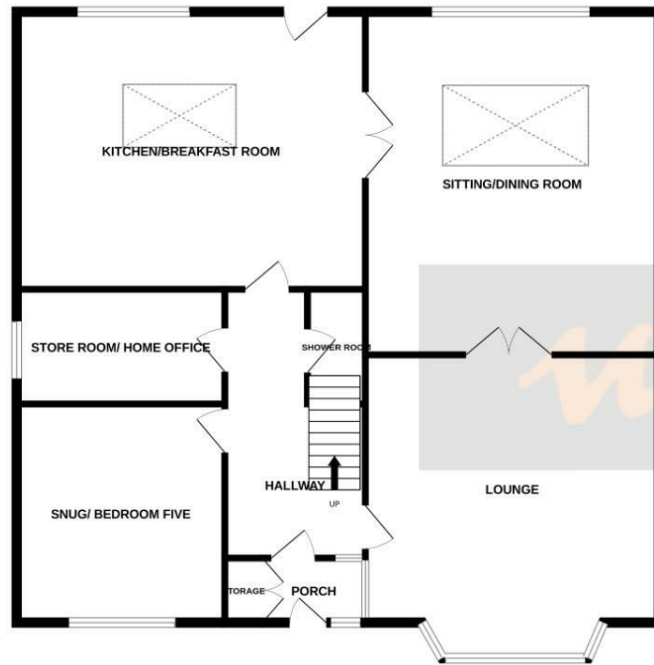
Family Bathroom

6'11" x 8'6" (2.114m x 2.600m)





GROUND FLOOR

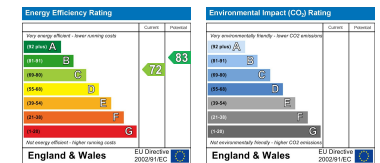


1ST FLOOR



Whilst every attempt has been made to ensure the accuracy of the floorplan contained here, measurements of doors, windows, rooms and any other items are approximate and no responsibility is taken for any error, omission or mis-statement. This plan is for illustrative purposes only and should be used as such by any prospective purchaser. The services, systems and appliances shown have not been tested and no guarantee as to their operability or efficiency can be given.
Made with Metropix ©2025

Webbs Estate Agents - endeavour to maintain accurate depictions of properties in Virtual Tours, Floor Plans and descriptions, however, these are intended only as a guide and purchasers must satisfy themselves by personal inspection.



212 High Street, Bloxwich, Walsall, WS3 3LA

Tel: 01922 663399 | Email: bloxwich@webbestateagents.co.uk | www.webbestateagents.co.uk