



Broad Lane | Wolverhampton | WV11 2RH

Offers Over £230,000



Summary

****THREE BEDROOM TERRACE HOME**EXTENDED AND SIGNIFICANTLY IMPROVED**TWO RECEPTION ROOMS**REFITTED KITCHEN** UTILITY ROOM**GUEST WC**REFITTED FAMILY BATHROOM AND SEPERATE DRESSING AREA**THREE GENEROUS BEDROOMS**EXTENSIVE LANDSCAPED REAR GARDEN** VIEWING IS HIGHLY RECCOMENDED****

Nestled in the heart of Essington, this beautifully extended and improved three-bedroom terraced home offers an exceptional blend of style and practicality. Thoughtfully updated to a high standard, this property is perfect for modern family living.

The ground floor boasts two inviting reception rooms, ideal for relaxation or entertaining. The extended and refitted kitchen is a standout feature, offering ample space for a range cooker and complemented by a separate utility room and a convenient guest WC.

On the first floor, you will find two generously sized bedrooms, a luxurious refitted family bathroom complete with a charming roll-top bath, and a versatile dressing area.

Key Features

- THREE BEDROOM TERRACE HOME
- TWO RECPETION ROOMS
- UTILITY ROOM AND GUEST WC
- DRESSING AREA
- LANDSCAPED REAR GARDEN
- IMPROVED AND EXTENDED
- REFITTED KITCHEN
- REFITTED BATHROOM
- LOFT ROOM
- CALL WEBB ON 01922 663399 TO SECURE YOUR VIEWING TODAY

Rooms and Dimensions

Identification Checks B

Dining Room

11'10" x 11'2" (3.63m x 3.42m)

Lounge

12'0" x 11'1" (3.66m x 3.38m)

Kitchen

20'10" x 8'1" (6.37m x 2.47m)

Laundry Room

5'10" x 4'10" (1.80m x 1.48m)

Guest WC

Bedroom One

12'0" x 11'3" (3.67m x 3.43m)

Bedroom Two

9'3" x 8'8" (2.83m x 2.66m)

Dressing Area

12'4" x 8'1" (3.78m x 2.48m)

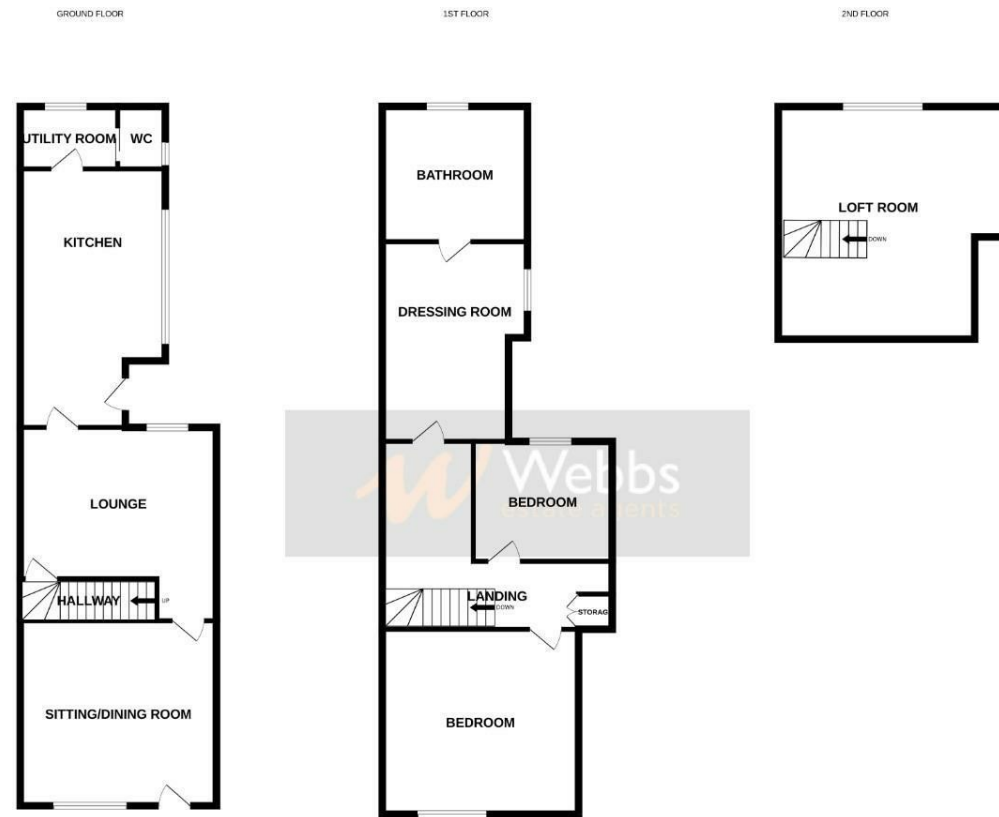
Family Bathroom

Loft Room

17'2" x 13'11" (5.25m x 4.25m)

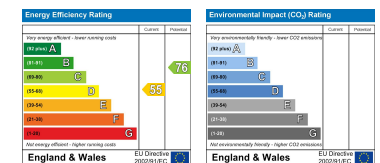






Whilst every attempt has been made to ensure the accuracy of the floorplan contained here, measurements of doors, windows, rooms and any other items are approximate and no responsibility is taken for any error, omission or mis-statement. This plan is for illustrative purposes only and should be used as such by any prospective purchaser. The services, systems and appliances shown have not been tested and no guarantee as to their operability or efficiency can be given.
Made with Metropix 02/2024

Webbs Estate Agents - endeavour to maintain accurate depictions of properties in Virtual Tours, Floor Plans and descriptions, however, these are intended only as a guide and purchasers must satisfy themselves by personal inspection.



212 High Street, Bloxwich, Walsall, WS3 3LA

Tel: 01922 663399 | Email: bloxwich@webbestateagents.co.uk | www.webbestateagents.co.uk

