



Wolverhampton Road | Walsall | WS3 4AQ

Offers Over £185,000



Summary

****TWO BEDROOM TERRACE** RENOVATED THROUGHOUT** FRONT AND REAR GARDEN***NO ONWARD CHAIN** CONSERVATORY TO THE REAR** TWO GENEROUS BEDROOMS** LOUNGE DINER**FITTED KITCHEN**FITTED BATHROOM**NEWLY FITTED CENTRAL HEATING***

Welcome to this beautifully renovated three-bedroom mid-terrace home on Wolverhampton Road, offering modern comfort and stylish design throughout.

Step inside through the welcoming porch into a bright hallway leading to a spacious lounge and dining area, perfect for both relaxation and entertaining. The contemporary kitchen fitted and designed with ample storage and workspace, ideal for culinary enthusiasts. A light-filled conservatory at the rear extends the living space and opens onto a private, enclosed garden, creating an inviting area for outdoor enjoyment.

On the first floor, you'll find two generously sized bedrooms and a modern bathroom, providing comfortable and flexible accommodation. Outside, the property boasts a well-kept front lawn garden,

Key Features

- TWO BEDROOM MID TERRACE HOME
 - NEW CENTRAL HEATING
 - LOUNGE DINER
 - TWO GENEROUS BEDROOMS
 - POPULAR LOCATION
- NO ONWARD CHAIN
 - FITTED KITCHEN
 - CONSERVATORY TO THE REAR
 - FITTED BATHROOM
 - CALL WEBBS ON 01922 663399 TO SECURE YOUR VIEWING

Rooms and Dimensions

Identification Checks B

Entrance Porch

Hall

Breakfast Kitchen

Lounge Diner

Consevatory

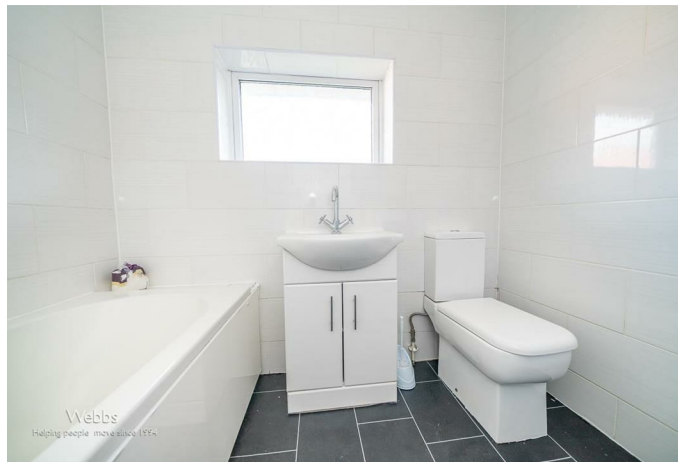
First Floor Landing

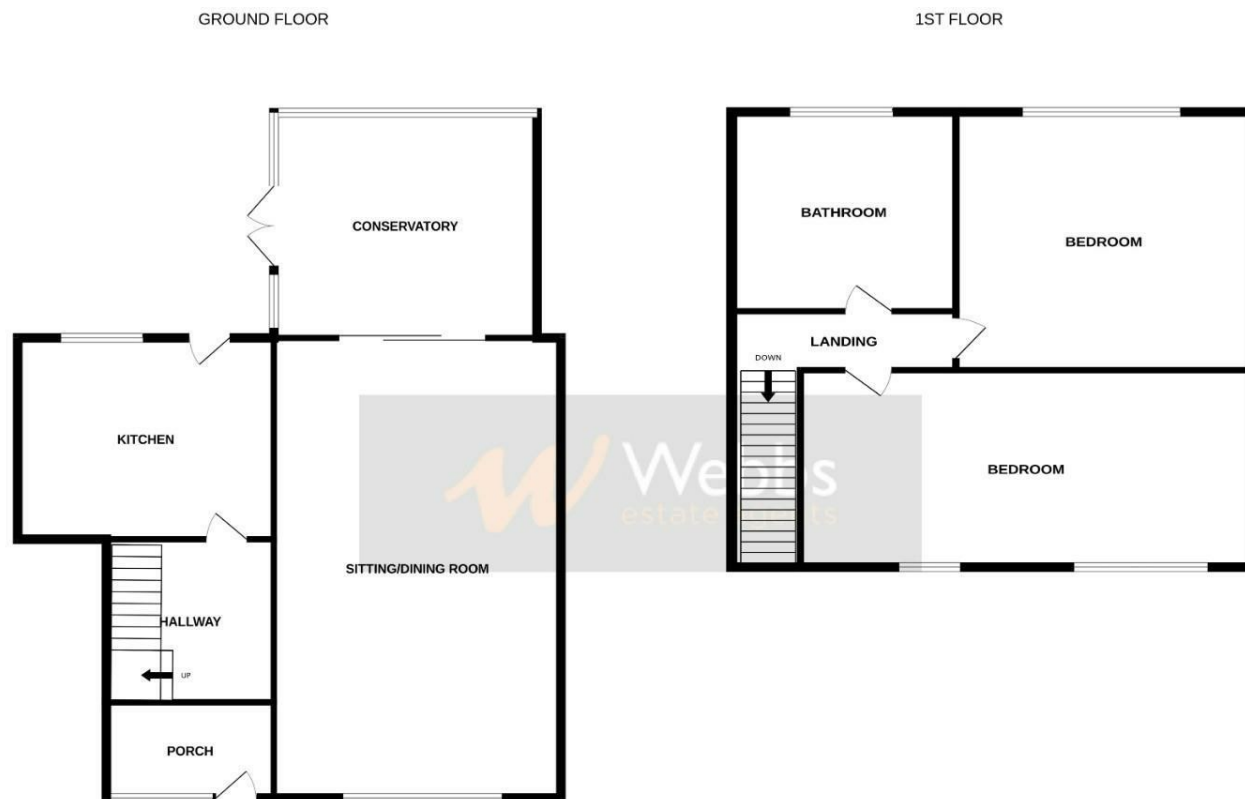
Bedroom One

Bedroom Two

Bathroom

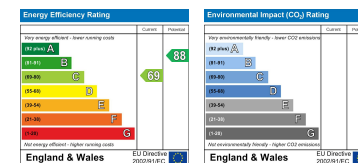






Whilst every attempt has been made to ensure the accuracy of the floorplan contained here, measurements of doors, windows, rooms and any other items are approximate and no responsibility is taken for any error, omission or mis-statement. This plan is for illustrative purposes only and should be used as such by any prospective purchaser. The services, systems and appliances shown have not been tested and no guarantee as to their operability or efficiency can be given.
Made with Metropix ©2024

Webbs Estate Agents - endeavour to maintain accurate depictions of properties in Virtual Tours, Floor Plans and descriptions, however, these are intended only as a guide and purchasers must satisfy themselves by personal inspection.



212 High Street, Bloxwich, Walsall, WS3 3LA

Tel: 01922 663399 | Email: bloxwich@webbestateagents.co.uk | www.webbestateagents.co.uk

