



Park Road | Walsall | WS3 3SS

Asking Price £340,000



Summary

****EXECUTIVE AND EXTENDED FOUR BEDROOM DETACHED HOME**ORANGRY TO THE REAR** TWO RECEPTION ROOMS** FOUR GENEROUS BEDROOMS** ENSUITE TO MASTER**GATED COMMUNITY** PRIVATE DRIVE**FULL FIBRE** DRIVEWAY AND GARAGE**LOW MAINTANCE REAR GARDEN****

Welcome to Poplar Court, an impressive four-bedroom executive detached home nestled in an exclusive gated community with private drive access. This stunning property boasts a spacious resin driveway, garage, and an array of modern features that make it the ideal family home.

Upon entering, you're greeted by a well-appointed hallway leading to a stylish fitted kitchen and dining area, perfect for hosting or family meals. The ground floor also offers a cozy lounge, a bright orangery providing additional living space, and a convenient WC.

On the first floor, there are four generously sized bedrooms, including a master suite with an en-suite bathroom, as well as a contemporary family bathroom to serve the additional bedrooms.

Key Features

- EXECUTIVE AND EXTENDED FOUR BEDROOM DETACHED HOME
- PRIVATE DRIVE
- SMALL DEVELOPMENT
- TWO RECEPTION ROOMS
- SUN ROOM TO THE REAR
- DRIVE AND GARAGE
- FITTED KITCHEN
- EN SUITE TO MASTER BEDROOM
- STUNNING LOCATION
- CALL WEBBS ON 01922 663399 TO SECURE YOUR VIEWING TODAY!!!

Rooms and Dimensions

Identification Checks B

Entrance Porch

4'10" x 3'4" (1.493m x 1.021)

Entrance Hall

Lounge

15'2" x 16'0" (4.623m x 4.881m)

Kitchen

10'0" x 8'3" (3.07m x 2.52m)

Dining Area

7'10" x 8'9" (2.41m x 2.67m)

Orangry

15'4" x 9'6" (4.692m x 2.899m)

First Floor Landing

Mater Bedroom

11'9" x 9'10",1551'10" (3.597m x 3,473m)

Ensuite Shower Room

4'11" x 3'5" (1.521m x 1.066m)

Bedroom Two

15'9" x 8'11" (4.809m x 2.731m)

Bedroom Three

11'3" x 7'9" (3.450m x 2.368m)

Bedroom Four

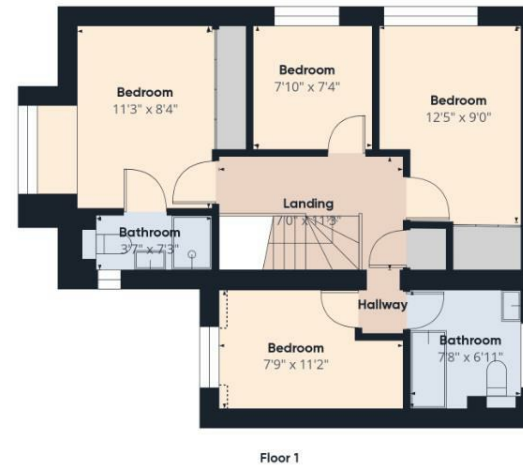
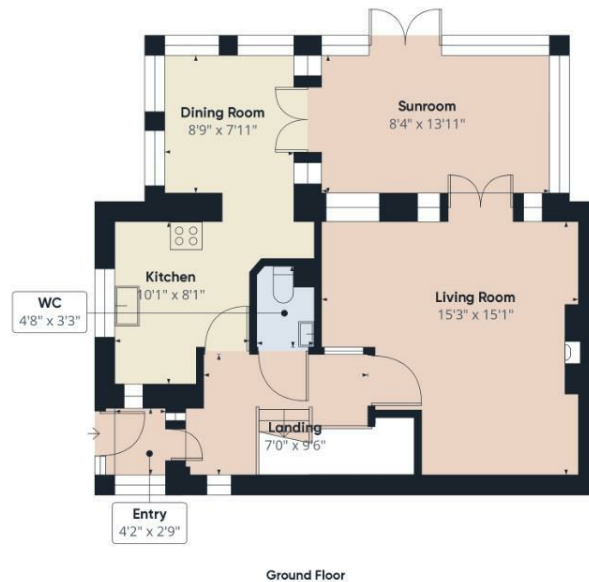
7'5" x 7'11" (2.270m x 2.428m)

Family Bathroom

7'8" x 6'11" (2.343m x 2.126m)







Approximate total area⁽¹⁾
1114.19 ft²
Reduced headroom
1.88 ft²

(1) Excluding balconies and terraces

Reduced headroom
..... Below 5 ft

While every attempt has been made to ensure accuracy, all measurements are approximate, not to scale. This floor plan is for illustrative purposes only.

Calculations were based on RICS IPMS 3C standard. Please note that calculations were adjusted by a third party and therefore may not comply with RICS IPMS 3C.

GIRAFFE360

Webbs Estate Agents - endeavour to maintain accurate depictions of properties in Virtual Tours, Floor Plans and descriptions, however, these are intended only as a guide and purchasers must satisfy themselves by personal inspection.

