



Catches Drive | Walsall | WS3 2LQ

£260,000

 **Webbs**  
estate agents

## Summary

**\*\*THREE BEDROOM TOWN HOUSE\*\* GROUND FLOOR SHOWER ROOM\*\* TWO ENSUITE BEDROOMS\*\* GARAGE\*\* SEPERATE UTILITY\*\* FITTED KITCHEN\*\* LOUNGE WITH JULIET BALCONY\*\* THREE DOUBLE BEDROOMS\*\* GARGAE AND DRIVE\*\* POPULAR LOCATION\*\* CLOSE TO ALL LOCAL AMENITIES\*\* FITTED WARDROBES IN TWO BEDROOMS\*\***

Webbs Estate Agents are pleased to bring to market this deceptively spacious three bedroom town house located conveniently close to Bloxwich High Street and all the local amenities it has to offer.

This home briefly comprises of: internal garage, entrance hall, shower room, utility room and bedroom three.

On the first floor there is the spacious kitchen diner with integrated appliances and a variety of wall and base units, to the front is the sizable lounge complete with Juliet balcony.

On the second floor there are a further two double bedrooms both boasting en suite bathroom.

To the front of this home there is the driveway, canopied entrance and access to the garage.

To the rear of this home there is a private and enclosed rear garden with paved patio area and lawn area.

Call Webbs on 01922 663399 to secure your viewing!!!

## Key Features

- THREE BEDROOM TOWN HOUSE
- TWO ENSUITE BEDROOMS
- UTILITY ROOMS
- KITCHEN DINER
- POPULAR LOCATION CLOSE TO ALL LOCAL AMENITIES
- GARAGE AND DRIVE
- DECEPTIVLEY SPACIOUS
- DOWNSTAIRS SHOWER ROOM
- LOUNGE WITH JULIET BALCONY
- CALL WEBBS ON 01922 663399 TO SECURE YOUR VIEWING!!

## Rooms and Dimensions

### Entrance Hall

### Shower Room

### Utility Room

7'10" x 5'6" (2.41m x 1.70m)

### Bedroom Three

8'7" x 8'7" (2.64m x 2.62m)

### Kitchen Diner

14'7" x 8'9" (4.45m x 2.67m)

### Lounge

18'11" x 14'7" (5.79m x 4.45m)

### Bedroom One

14'6" x 12'2" (4.42m x 3.71m)

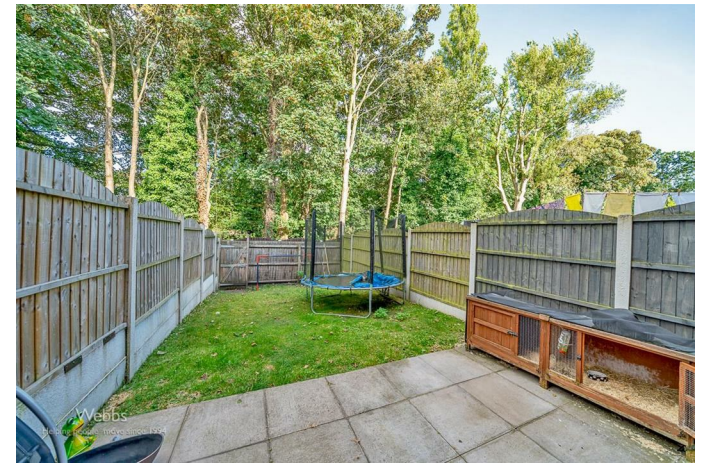
### En-Suite

### Bedroom Two

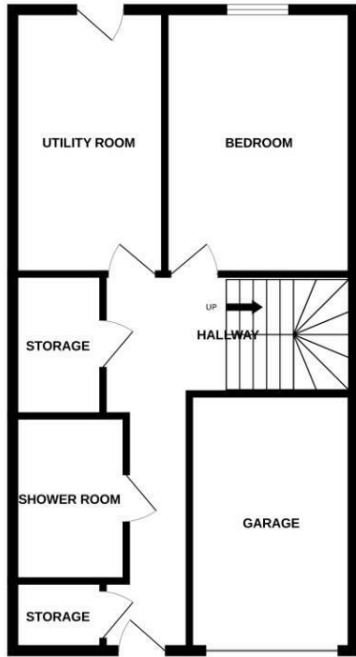
12'7" x 9'4" (3.86m x 2.87m)

### En-Suite

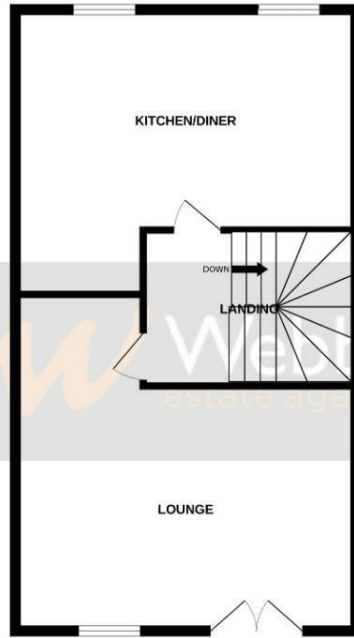




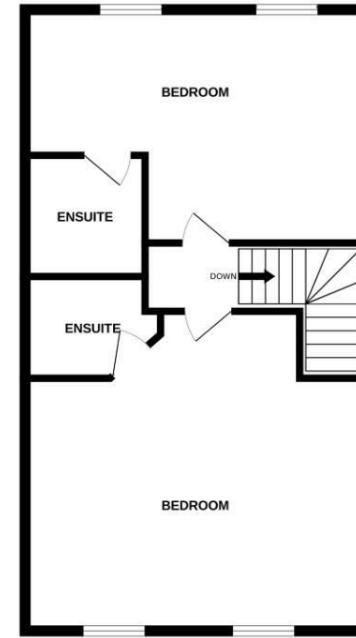
GROUND FLOOR



1ST FLOOR



2ND FLOOR



Whilst every attempt has been made to ensure the accuracy of the floorplan contained here, measurements of doors, windows, rooms and any other items are approximate and no responsibility is taken for any error, omission or mis-statement. This plan is for illustrative purposes only and should be used as such by any prospective purchaser. The services, systems and appliances shown have not been tested and no guarantee as to their operability or efficiency can be given.  
Made with Metropix ©2024

Webbs Estate Agents - endeavour to maintain accurate depictions of properties in Virtual Tours, Floor Plans and descriptions, however, these are intended only as a guide and purchasers must satisfy themselves by personal inspection.

