



Webbs
Helping people move since 1991

Remington Road | Walsall | WS2 7EJ

Auction Guide £110,000



Summary

** FOR SALE BY MODERN METHOD OF AUCTION ** END TERRACED HOUSE ** LOTS OF POTENTIAL ** NO ONWARD CHAIN ** DECEPTIVELY SPACIOUS ** INTERNAL VIEWING ADVISED ** TWO BEDROOMS TO FIRST FLOOR ** KITCHEN ** UTILITY/STORE ROOM ** BATHROOM ** LIVING ROOM ** LOVELY PRIVATE REAR GARDEN ** UPVC DOUBLE GLAZING ** GAS CENTRAL HEATING ** BUYER FEES APPLY ** SUBJECT TO A RESERVE PRICE **

Fantastic opportunity to purchase this traditional end terraced property well maintained but offering potential and is located in a popular and convenient location close to shops, schools, amenities and motorway, briefly comprising : Entrance porch, reception hall, Living room, kitchen, utility area , rear lobby with store, the first floor has two double bedrooms and bathroom and WC. Externally there are gardens to front and rear with useful storage. Property is offered for sale through the Modern Method of Auction which is operated by iamsold Limited. For a viewing call us on 01922 663399. For a viewing please call 01922 663399.

Key Features

- SOLD BY MODERN METHOD OF AUCTION WITH NO ONWARD CHAIN
- TRADITIONAL END TERRACED HOUSE WITH POTENTIAL
- LIVING ROOM
- BATHROOM WC ON FIRST FLOOR
- FRONT GARDEN AND LOVELY PRIVATE REAR GARDEN WITH USEFUL STORAGE
- BUYERS FEE APPLY, SUBJECT TO RESERVE PRICE
- TWO DOUBLE BEDROOMS
- KITCHEN AND UTILITY AREA
- DOUBLE GLAZING AND GAS CENTRAL HEATING
- EAST ACCESS TO LOCAL SCHOOLS, SHOPS AND AMENITIES

Rooms and Dimensions

Entrance porch

Reception hall

Living room

12'7" max 9'2" min x 13'11" (3.84m max 2.81m min x 4.25m)

Kitchen

9'7" x 9'0" (2.93m x 2.76m)

Utility area

6'6" x 5'8" (1.99m x 1.73m)

Rear lobby area with store

First floor landing

Bedroom one

16'0" max 12'7" min x 10'8" (4.89m max 3.85m min x 3.27m)

Bedroom two

12'11" x 8'11" (3.94m x 2.74m)

Bathroom WC

9'7" x 5'6" (2.93m x 1.69m)

Front garden

Private rear garden with storage

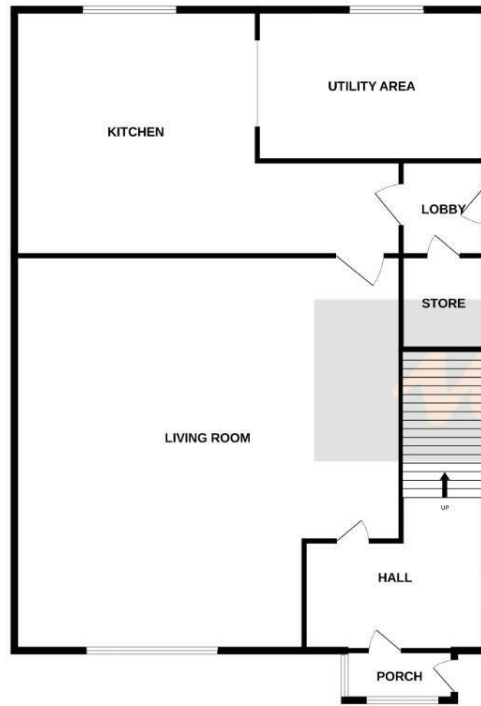
Auctioneers comments

Identification Checks

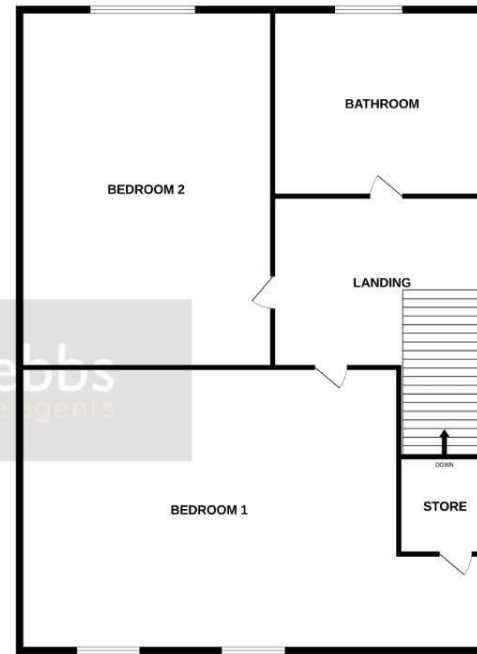




GROUND FLOOR



1ST FLOOR



Whilst every attempt has been made to ensure the accuracy of the floorplan contained here, measurements of doors, windows, rooms and any other items are approximate and no responsibility is taken for any error, omission or mis-statement. This plan is for illustrative purposes only and should be used as such by any prospective purchaser. The services, systems and appliances shown have not been tested and no guarantee as to their operability or efficiency can be given.
Made with Metropix 62024

Webbs Estate Agents - endeavour to maintain accurate depictions of properties in Virtual Tours, Floor Plans and descriptions, however, these are intended only as a guide and purchasers must satisfy themselves by personal inspection.

