



Roebuck Road | Walsall | WS3 1AL

£240,000



Summary

****THREE BEDROOM END OF TERRACE** FULLY RENOAVTED** LARGE FRONT GARDEN** LARGE REAR GARDEN** REFITTED ROOF** REFITTED BOILER** REFITTED KITCHEN** REFITTED BATHROOM** THREE GENEROUSLY SIZED BEDROOMS** POPULAR RESIDENTIAL LOCATION****

Webbs Estate agents are pleased to bring to market this tastefully renovated three bedroom end of terrace home that has undergone extensive works by its current owners this property boasts large internal rooms and generously sized front and rear gardens.

In brief this home comprises of: Entrance hall, refitted kitchen diner, large lounge to the rear, guest WC, and store room.

On the first floor there are three generously sized bedrooms and refitted bathroom.

Viewing is essential to appreciate this home call us today on 01922 663399 to secure your viewing.

Key Features

- THREE BEDROOM END OF TERRACE HOME
- REFITTED KITCHEN
- REFFITED BOILER
- LARGE FRONT AND REAR GARDEN
- POPULAR LOCATION
- FULLY RENOVATED THROUGHOUT
- REFITTED BATHROOM
- REFFITED ROOF
- GUEST WC
- CALL WEBBS TODAY ON 01922 663399 TO SECURE YOUR VIEWING

Rooms and Dimensions

Entrance Hall

Guest WC

Lounge

16'8" x 9'11" (5.091m x 3.044m)

Kitchen Diner

9'10" x 13'10" (3.012m x 4.224m)

Store Room

12'8" x 4'7" (3.862m x 1.402m)

Bedroom One

10'0" x 13'8" (3.060m x 4.181m)

Bedroom Two

12'10" x 8'9" (3.912m x 2.680m)

Bedroom Three

6'10" x 9'11" (2.103m x 3.048m)

Bathroom

8'11" x 6'4" (2.722m x 1.951m)

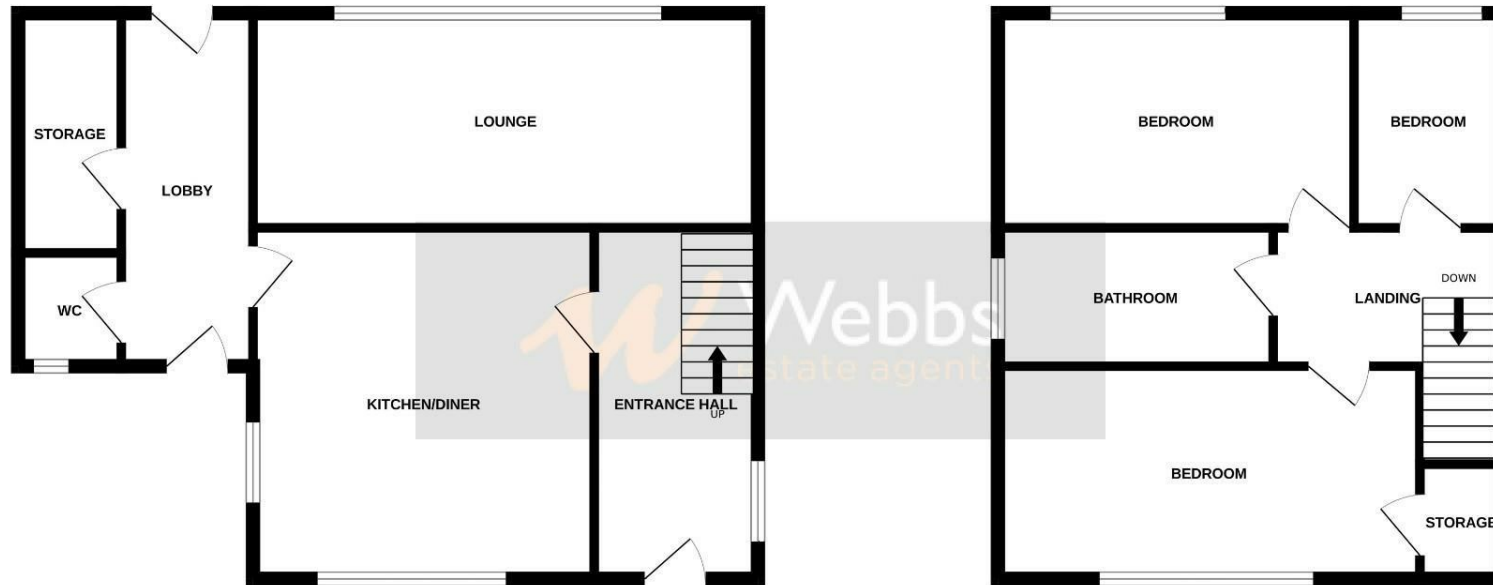
Rear Garden





GROUND FLOOR

1ST FLOOR



Whilst every attempt has been made to ensure the accuracy of the floorplan contained here, measurements of doors, windows, rooms and any other items are approximate and no responsibility is taken for any error, omission or mis-statement. This plan is for illustrative purposes only and should be used as such by any prospective purchaser. The services, systems and appliances shown have not been tested and no guarantee as to their operability or efficiency can be given.
Made with Metropix ©2024

Webbs Estate Agents - endeavour to maintain accurate depictions of properties in Virtual Tours, Floor Plans and descriptions, however, these are intended only as a guide and purchasers must satisfy themselves by personal inspection.

