



Webbs

Helping people move since 1994

Buxton Road | Walsall | WS3 3QN

Asking Price £190,000

 **Webbs**
estate agents

Summary

****TWO BEDROOM TERRACE** WAS PREVIOUSLY A THREE BEDROOM** REFITTED SHOWER ROOM** REFITTED KITCHEN DINER ** SUMMER HOUSE IN REAR GARDEN WITH ELETRICITY** KITCHEN DINER ** PRIVATE AND ENCLOSED REAR GARDEN** POPULAR LOCATION** FINISHED TO A HIGH STANDARD****

Webbs Estate Agents are pleased to bring to market this two bedroom terrace home which previously a three bedroom home, this property was previously a three bed however, the current vendor has made bedroom one and three one room.

This property is situated within a close proximity to local shops, school and amenities with convivence in mind.

In Brief this home boasts: entrance hall, spacious lounge, refitted kitchen diner, two generously sized bedrooms and refitted shower room.

To the front of this home there is fenced garden that has a pathed pathway and lawn area.

To the rear there is a private and enclosed rear garden with a paved patio area, raised boarders and summer house benefiting from electricity.

Call us today on 01922 663399 to secure your viewing.

Key Features

- TWO BEDROOM SEMI DETACHED HOME
- REFITTED KITCHEN
- REFITTED SHOWER ROOM
- PRIVATE AND ENCLOSED REAR GARDEN
- POPULAR LOCATION
- PREVIOUSLY A THREE BEDROOM
- KITCHEN DINER
- SUMMER HOUSE TO REAR GARDEN
- FINISHED TO A HIGH STANDARD THROUGHOUT
- VIEWING IS ESSENTIAL

Rooms and Dimensions

Lounge

14'4" x 16'3" (4.388 x 4.977)

Kitchen diner

19'7" x 8'9" (5.981 x 2.691)

Bedroom One

19'7" x 13'2" (5.985 x 4.026)

Bedroom Two

13'0" x 10'6" (3.980 x 3.215)

Bathroom

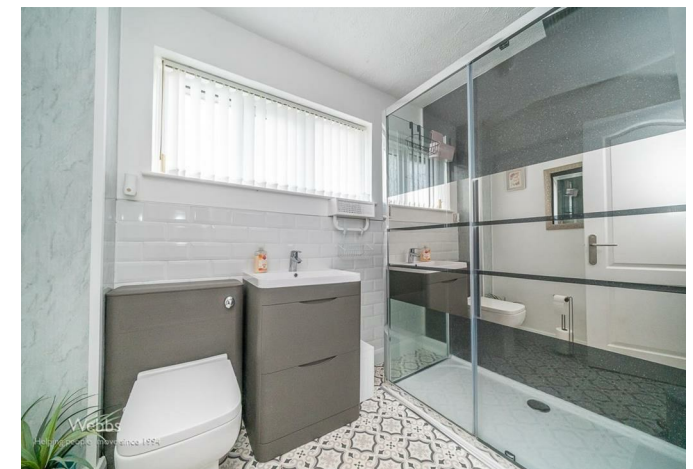
8'1" x 5'7" (2.474 x 1.718m)

Summer House

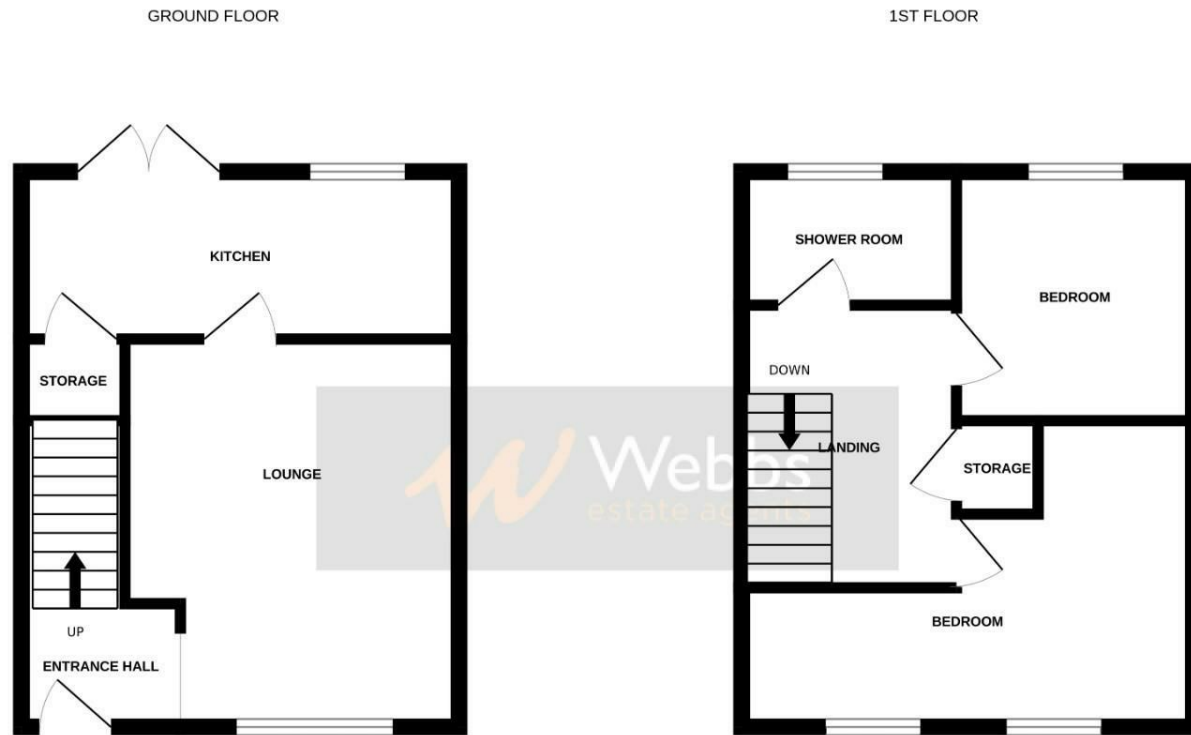
10'11" x 7'0" (3.333m x 2.140m)

Rear Garden

Front Garden







Whilst every attempt has been made to ensure the accuracy of the floorplan contained here, measurements of doors, windows, rooms and any other items are approximate and no responsibility is taken for any error, omission or mis-statement. This plan is for illustrative purposes only and should be used as such by any prospective purchaser. The services, systems and appliances shown have not been tested and no guarantee as to their operability or efficiency can be given.
Made with Metropix ©2024

Webbs Estate Agents - endeavour to maintain accurate depictions of properties in Virtual Tours, Floor Plans and descriptions, however, these are intended only as a guide and purchasers must satisfy themselves by personal inspection.

