



Chapel Street | Walsall | WS3 4LW

Offers In The Region Of £280,000



## Summary

\*\*\*THREE BEDROOM SEMI DETACHED HOME\*\*TWO RECEPTION ROOMS\*\* GARAGE AND DRIVEWAY TO THE FRONT\*\* LOUNGE DINER \*\* CONSERVATORY TO THE REAR \*\* FITTED KITCHEN AND BATHROOM \*\* MANICURED REAR GARDEN\*\* VIEWING IS ESSENTIAL\*\*

Webbs Estate agents are pleased to present to you this much improved three-bedroom semi detached home located in the popular village of Pelsall. This prime location offers a variety of local shops and amenities a stones throw away,

This home briefly comprises of an entrance hallway with under-stairs storage, a fitted kitchen benefiting from integrated fridge and access to the rear garden, lounge diner which then leads onto the conservatory to the rear.

The first floor has three DOUBLE bedrooms and a family bathroom.

Externally, the front of this home boasts a gravelled driveway with access to the integral garage a pathway down the side of the house leading inside, and a gated entrance to the rear garden.

The private and enclosed rear garden is well maintained by the current owners offering a variety of plants and shrubs, This property has to be viewed to be appreciated.

## Key Features

- THREE BEDROOM SEMI DETACHED HOME
- CONSERVATORY TO THE REAR
- POPULAR LOCATION
- DRIVEWAY
- MANICURED REAR GARDEN
- TWO RECEPTION ROOMS
- FITTED KITCHEN
- GARAGE
- LOUNGE DINER
- VIEWING IS ESSENTIAL

## Rooms and Dimensions

### Entrance Hall

8'3" x 2'10" (2.54m x 0.88m)

### Lounge Diner

10'7" x 28'5" (3.24m x 8.67)

### Consevatory

10'11" x 11'5" (3.33m x 3.48)

### Kitchen

9'1" x 8'6" (2.77m x 2.60m)

### Bedroom One

15'2" x 10'7" (4.63m x 3.23m)

### Bedroom Two

12'4" x 7'6" (3.78m x 2.29m)

### Bedroom Three

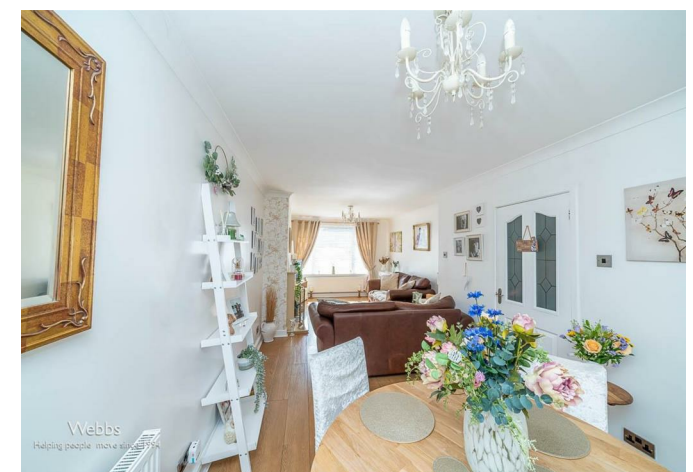
11'5" x 8'5" (3.49m x 2.58m)

### Bathroom

9'0" x 6'6",121'4" (2.76m x 2,37m)

### Rear Garden

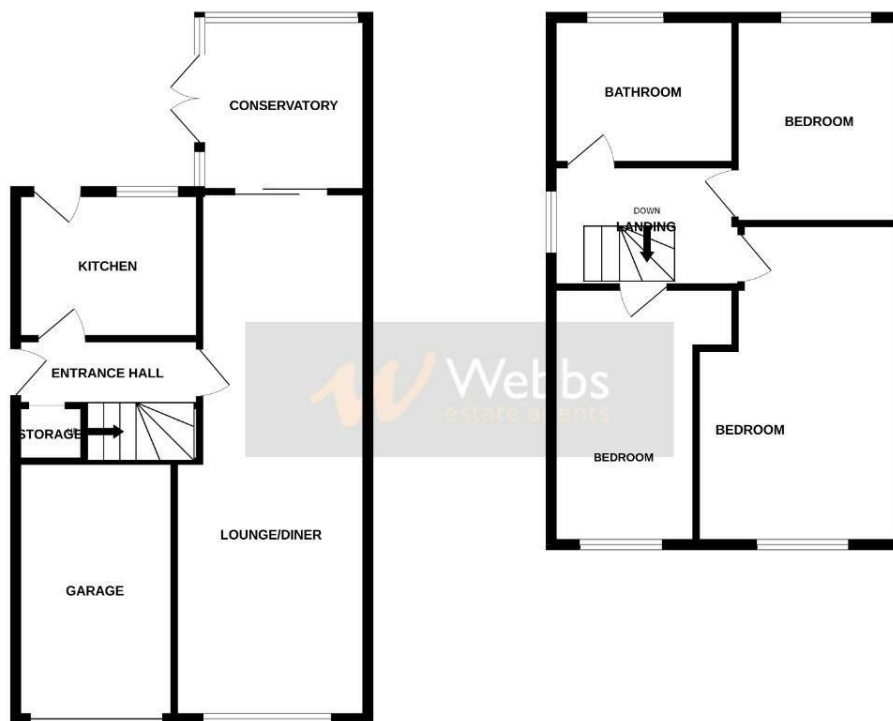
### Front Drive





GROUND FLOOR

1ST FLOOR



Whilst every attempt has been made to ensure the accuracy of the floorplan contained here, measurements of floors, windows, doors and any other items are approximate and no responsibility is taken for any error, omission or mis-statement. This plan is for illustrative purposes only and should be used as such by any prospective purchaser. The services, systems and appliances shown have not been tested and no guarantee as to their operability or efficiency can be given.  
Made with: Metropix ©2024

Webbs Estate Agents - endeavour to maintain accurate depictions of properties in Virtual Tours, Floor Plans and descriptions, however, these are intended only as a guide and purchasers must satisfy themselves by personal inspection.

