



Webb's

Simmons Road | Coppice Farm, Willenhall, | WV11 2NU

Offers Over £210,000

 **Webb's**
estate agents

Summary

**** WOW ** MOTIVATED SELLER ** FABULOUS CORNER PLOT ** CASH BUYERS/FTB BUYERS ** OUTSTANDING OPPORTUNITY ** LOVELY OUTLOOK TO FRONT AND REAR ELEVATIONS ** DECEPTIVELY SPACIOUS ** POTENTIAL TO EXTEND (STPC) ** THROUGH HALLWAY ** STUNNING LOUNGE WITH OAK FLOORING AND LOG BURNER ** FANTASTIC REFITTED KITCHEN VERANDAH / DINING ROOM ** TWO DOUBLE BEDROOMS ** REFITTED WET ROOM ** GENEROUS GARDENS & DRIVEWAY ** CAR PORT ** SECLUDED AND NOT OVERLOOKED ** TWO REAR GARDEN AREAS****

Webbs Estate Agents are delighted to offer for sale this rather wonderful corner plot extended semi-detached home with an absolute plethora of opportunity for further expansion. This lovely home very briefly comprises of porchway, hallway, STUNNING lounge with NEW oak flooring and log burner, REFITTED kitchen, dining room, storage room, landing, two double bedrooms and shower room, Externally there is a private driveway, car port and a wonderful southerly facing rear garden being low maintenance and very private indeed.

Key Features

- FABULOUS SEMI DETACHED HOME
- POTENTIAL TO EXTEND (stpc)
- POPULAR LOCATION
- VIEWING IS ESSENTIAL

Rooms and Dimensions

AWAITING VENDOR APPROVAL

PORCH

THROUGH HALLWAY

LOUNGE WITH LOG BURNER

20'6" x 10'11" (6.26m x 3.33m)

REFITTED KITCHEN

7'7" x 9'6" (2.32m x 2.91m)

DINING / GARDEN ROOM

12'0" x 7'7" (3.68m x 2.32m)

STORE ROOM

LANDING

BEDROOM ONE

13'11" x 10'5" (4.25m x 3.20m)

BEDROOM TWO

11'0" x 9'6" (3.36m x 2.91m)

WET ROOM

PRIVATE GARDENS

PRIVATE DRIVEWAY

COAL MINING

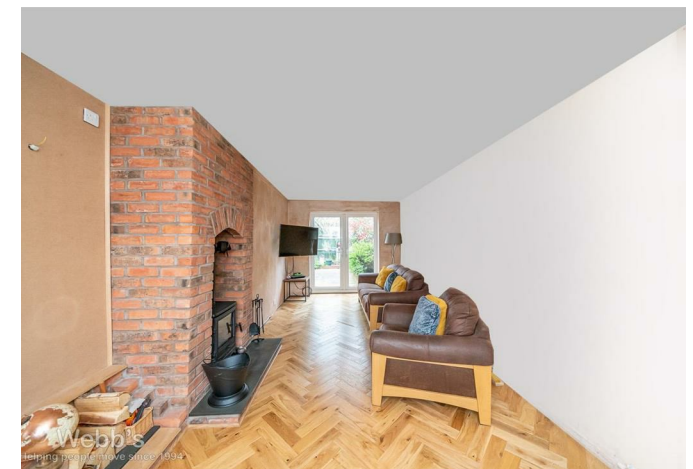
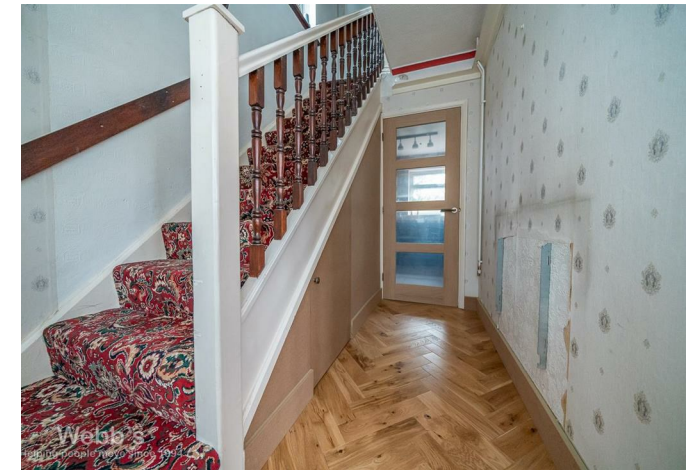
CONNECTIVITY:

PARKING

PROPERTY TYPE & CONSTRUCTION

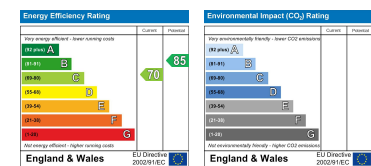
ROOMS

UTILITIES





Webbs Estate Agents - endeavour to maintain accurate depictions of properties in Virtual Tours, Floor Plans and descriptions, however, these are intended only as a guide and purchasers must satisfy themselves by personal inspection.



212 High Street, Bloxwich, Walsall, WS3 3LA

Tel: 01922 663399 | Email: bloxwich@webbestateagents.co.uk | www.webbestateagents.co.uk

