

Victoria Court

WEST MOOR, NEWCASTLE UPON TYNE



OFFERS IN EXCESS OF £299,950

In the vendors words

“A lovely, spacious home for a growing or full family. It was our first home together and has been a perfect start for our future together. We are only moving as we are relocating – however, if we could pick this house up and take it with us, we would!”

Freehold | Detached Four Bedroom
Private Driveway | Fully paved rear garden

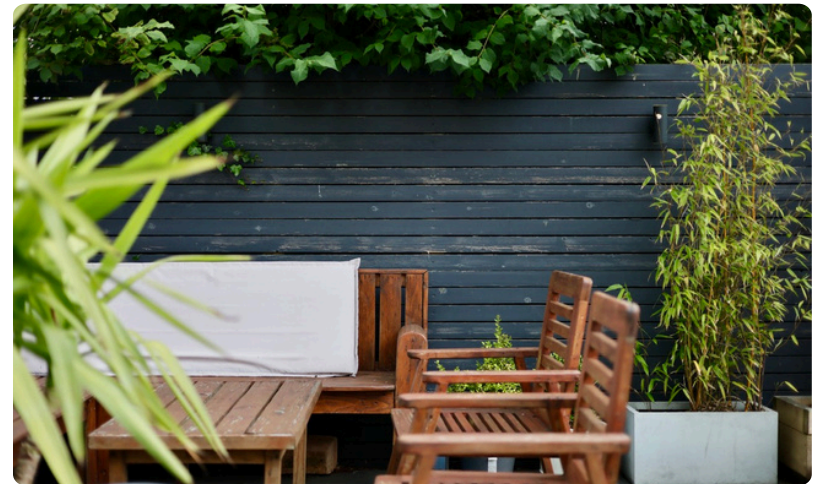




Four bedrooms | One Bathroom with seperate W/C | Conservatory

Accommodation in Brief

Tucked away in a quiet private cul-de-sac in the heart of West Moor, this immaculately presented four-bedroom detached home offers generous space, a natural flow between rooms, and a warm, welcoming feel. Carefully laid out and thoughtfully finished, it's a home that's both practical and ready to move straight into.







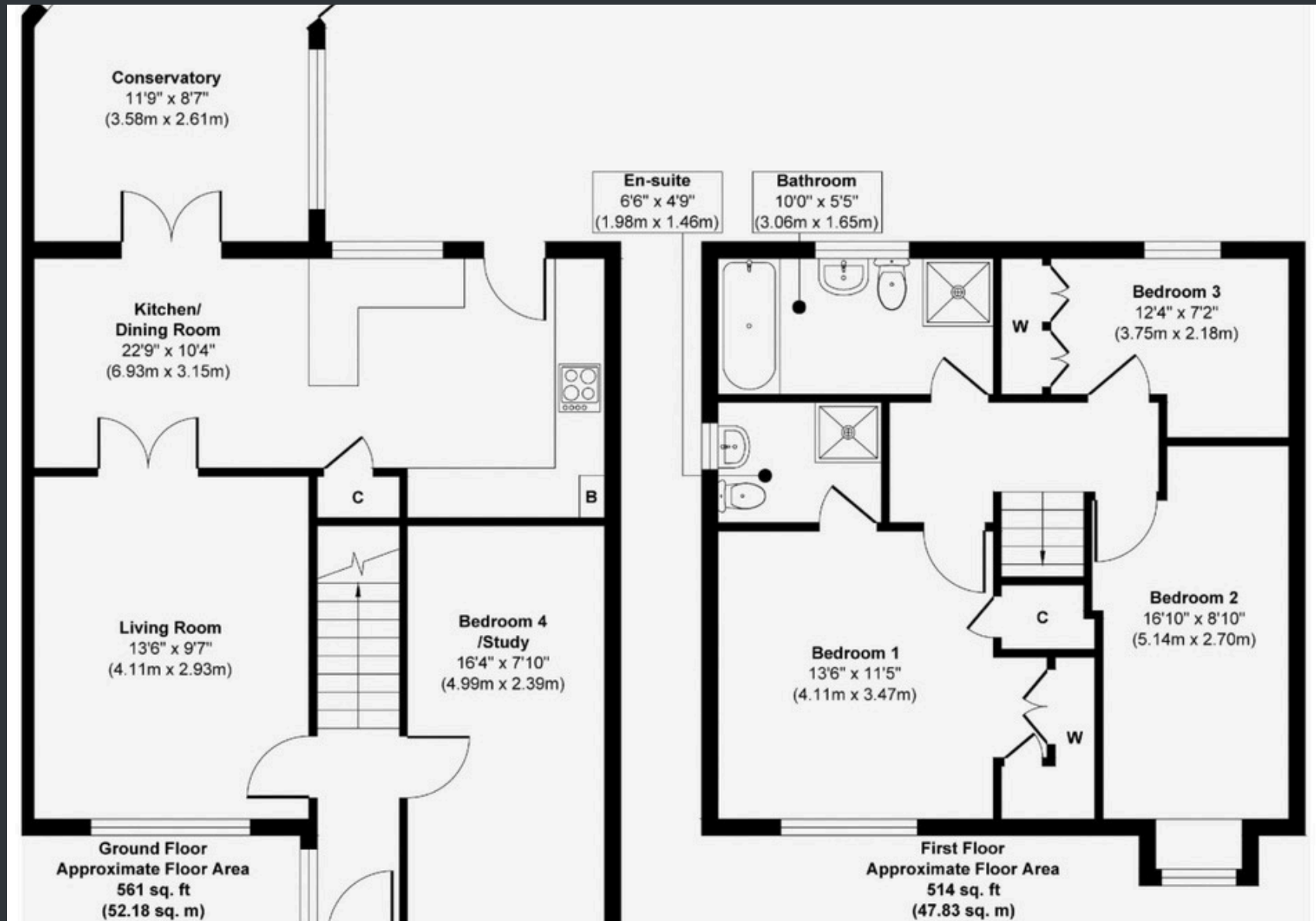
The Property

This spacious family home in sought-after West Moor offers a bright front lounge, stylish open-plan kitchen/diner, and a generous conservatory opening to a low-maintenance rear garden. A flexible fourth bedroom downstairs doubles as a snug, guest room, or home office.

Upstairs features three well-presented bedrooms, including a main with en-suite and fitted wardrobes, plus a sleek family bathroom with freestanding bath and walk-in shower.

With private driveway parking for up to three cars and excellent access to schools, shops, and transport links, this is a versatile home in a fantastic, family-friendly location.

Floor Plans



Arrange your viewing today!

Info@bowsonproperty.co.uk

0191 212 8100

117 St Georges Tr, NE2 2DN

