



CHATTERTON | REES



105A Onslow Square, London, SW7 3LU
£1,100,000





105A Onslow Square

London, SW7 3LU

- 1 bedroom & 1 Bathroom
- Garden Square Access
- Long Leasehold
- Newly Refurbished
- Tennis Court
- Caretaker

A beautifully presented modern one-bedroom apartment set in the heart of South Kensington on the prestigious Onslow Square.

The flat features a welcoming entrance hall with beautiful marble floor, leading through to a bright reception room with elegant walnut parquet flooring. There is a sleek fully fitted kitchen with integrated appliances, plus a separate guest WC.

The bedroom is well-proportioned with excellent storage and a stunning marble en suite bathroom with both a bath and separate shower, as well as a his-and-hers vanity.

The property further benefits from a caretaker and exclusive residents-only access to Onslow Square's beautifully maintained private communal gardens and tennis court. Ideally located just a short walk from South Kensington Station, with easy access to Chelsea, Knightsbridge and world-class museums.

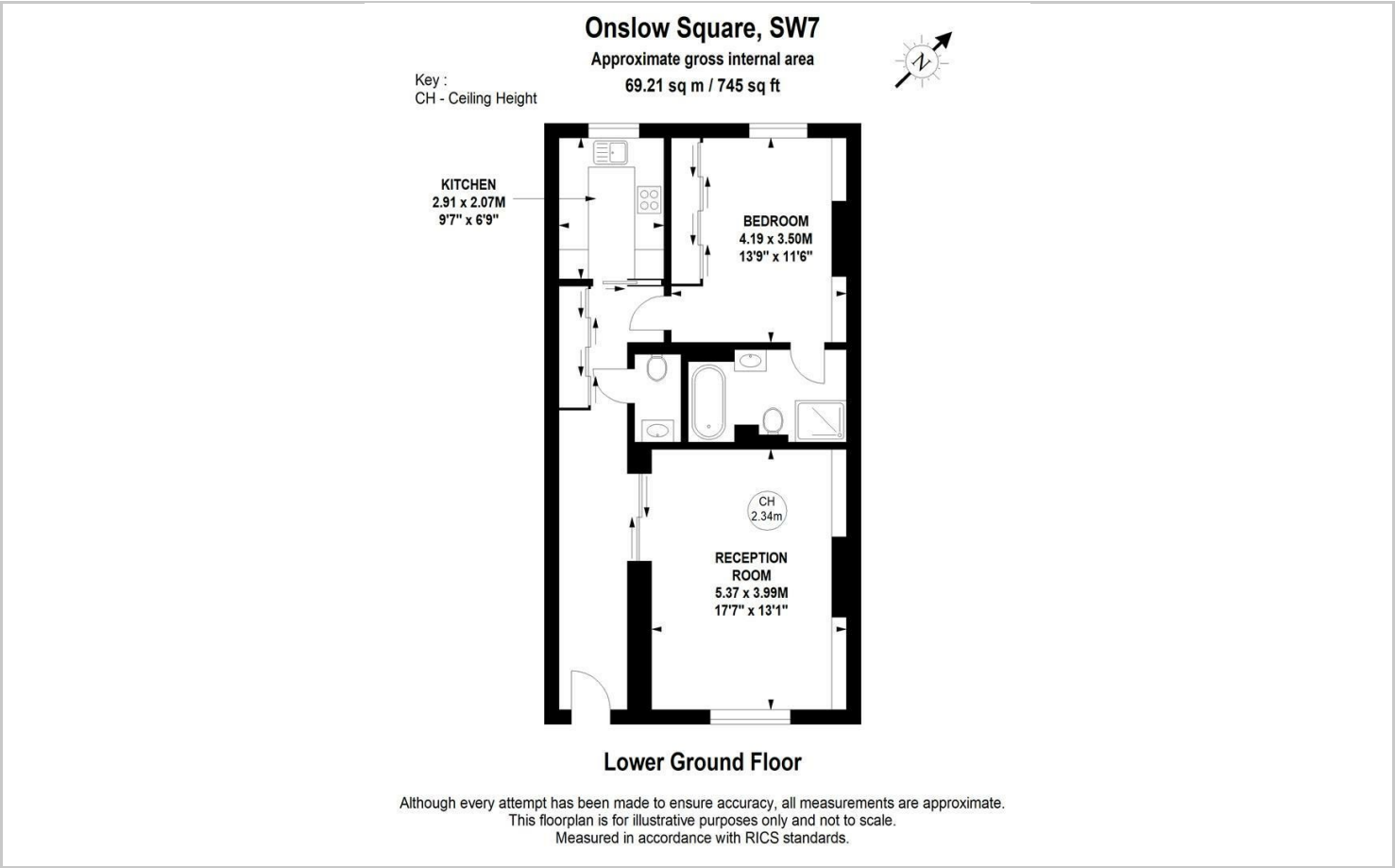
£1,100,000







Floor Plans

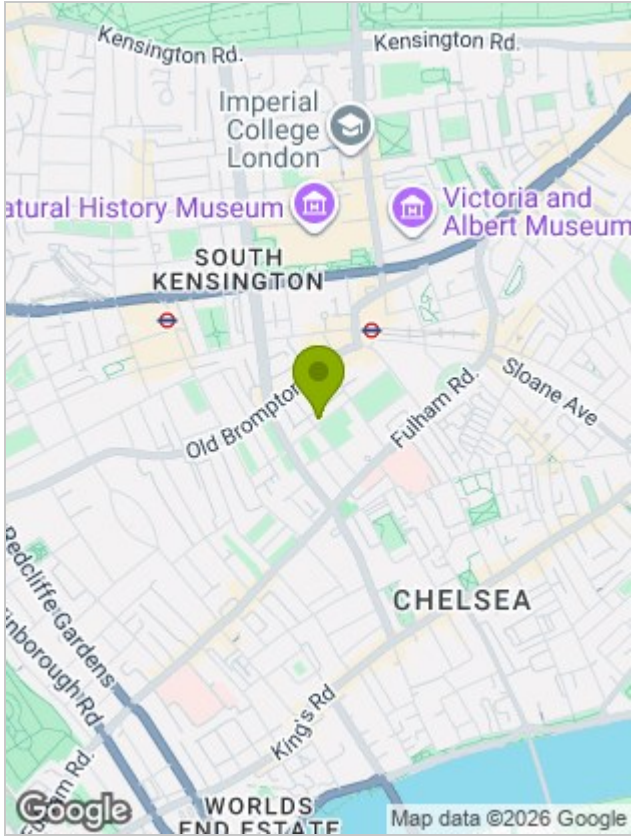


Viewing

Please contact our Chatterton Rees Office on 020 3780 0580 if you wish to arrange a viewing appointment for this property or require further information.

The particulars are set out as a general outline only for the guidance of intended purchasers or lessees, and do not constitute, any part of a contract. Nothing in these particulars shall be deemed to be a statement that the property is in good structural condition or otherwise nor that any of the services, appliances, equipment or facilities are in good working order. Purchasers should satisfy themselves of this prior to purchasing.

Location Map



Energy Performance Graph

