



CHATTERTON | REES



1, 22 Buckingham Gate, London, SW1E 6LB
Asking price £899,950





1, 22 Buckingham Gate

London, SW1E 6LB

- Long Lease
- Central Location
- Private Front door
- Modern Finish
- Wooden Floors
- 1 Bedroom

A beautifully appointed one bedroom duplex apartment with a private front courtyard set within this fully restored Grade II Listed building just 200m from Buckingham Palace.

Arranged over the upper ground and lower ground floors the apartment offers extremely generous accommodation. Spanning the front of the building, the open plan kitchen, living and dining area extends to in excess of 560 sq. ft. and overlooks a private courtyard with separate entrance. A grand master bedroom is located on the upper ground floor with a luxury en-suite bathroom and walk in dressing room as well as a second optional front door.

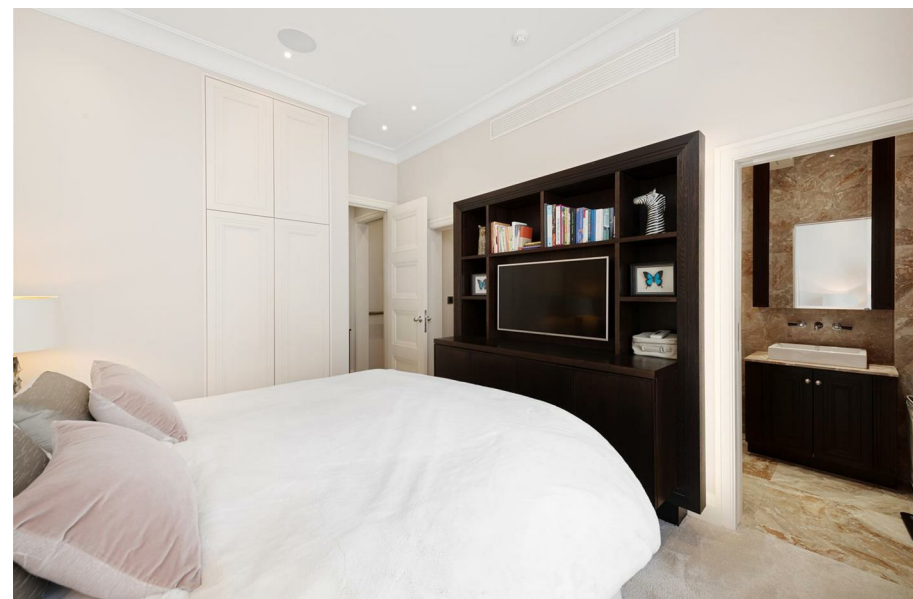
22 Buckingham Gate is a striking period property in the Birdcage Walk Conservation area that underwent an extensive renovation by the award winning Seastar Developments in 2015/16 creating a range of luxurious apartments behind the original Grade II listed façade.

Asking price £899,950





Directions





Floor Plans

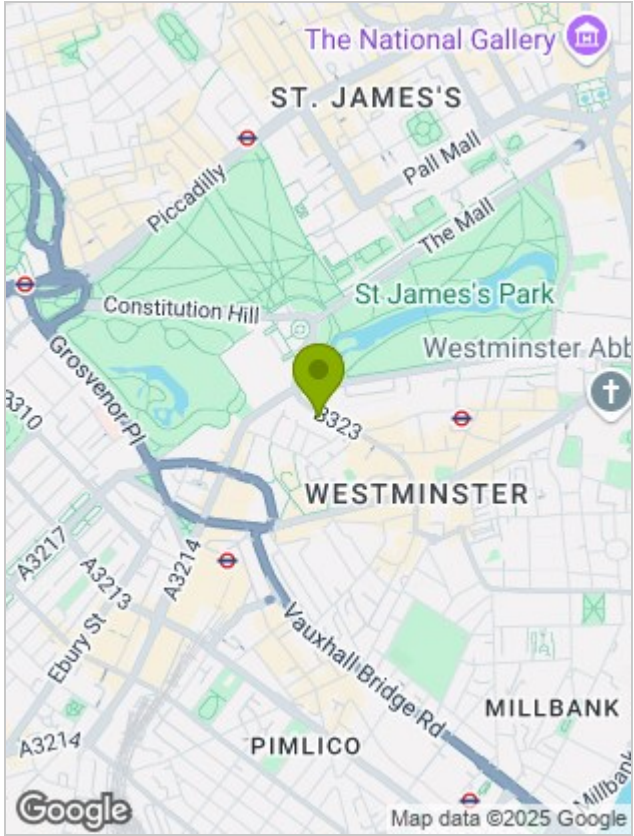


Viewing

Please contact our Chatterton Rees Office on 020 3780 0580 if you wish to arrange a viewing appointment for this property or require further information.

The particulars are set out as a general outline only for the guidance of intended purchasers or lessees, and do not constitute, any part of a contract. Nothing in these particulars shall be deemed to be a statement that the property is in good structural condition or otherwise nor that any of the services, appliances, equipment or facilities are in good working order. Purchasers should satisfy themselves of this prior to purchasing.

Location Map



Energy Performance Graph

