



CHATTERTON | REES



3 Moor Park House Way

, Farnham, GU10 1FE

Guide price £750,000



3



2



2



D

3 Moor Park House Way



Description

The Courtyard is a charming period property converted around 2010 from a 17th century stable block previously forming part of the Moor Park House private estate.

Set on 12 acres of stunning communal grounds this charming house has three bedrooms, two bathrooms, two reception rooms and a separate kitchen.

The ground floor of the house is home to some excellent proportions with a large living room at one end, an excellent dining room / second living area in the middle and the kitchen and lido by the front entrance. Each room on the ground floor opens up onto a private terrace area surrounded by beautiful plants and trees as well as the period charm of the cobbled courtyard.

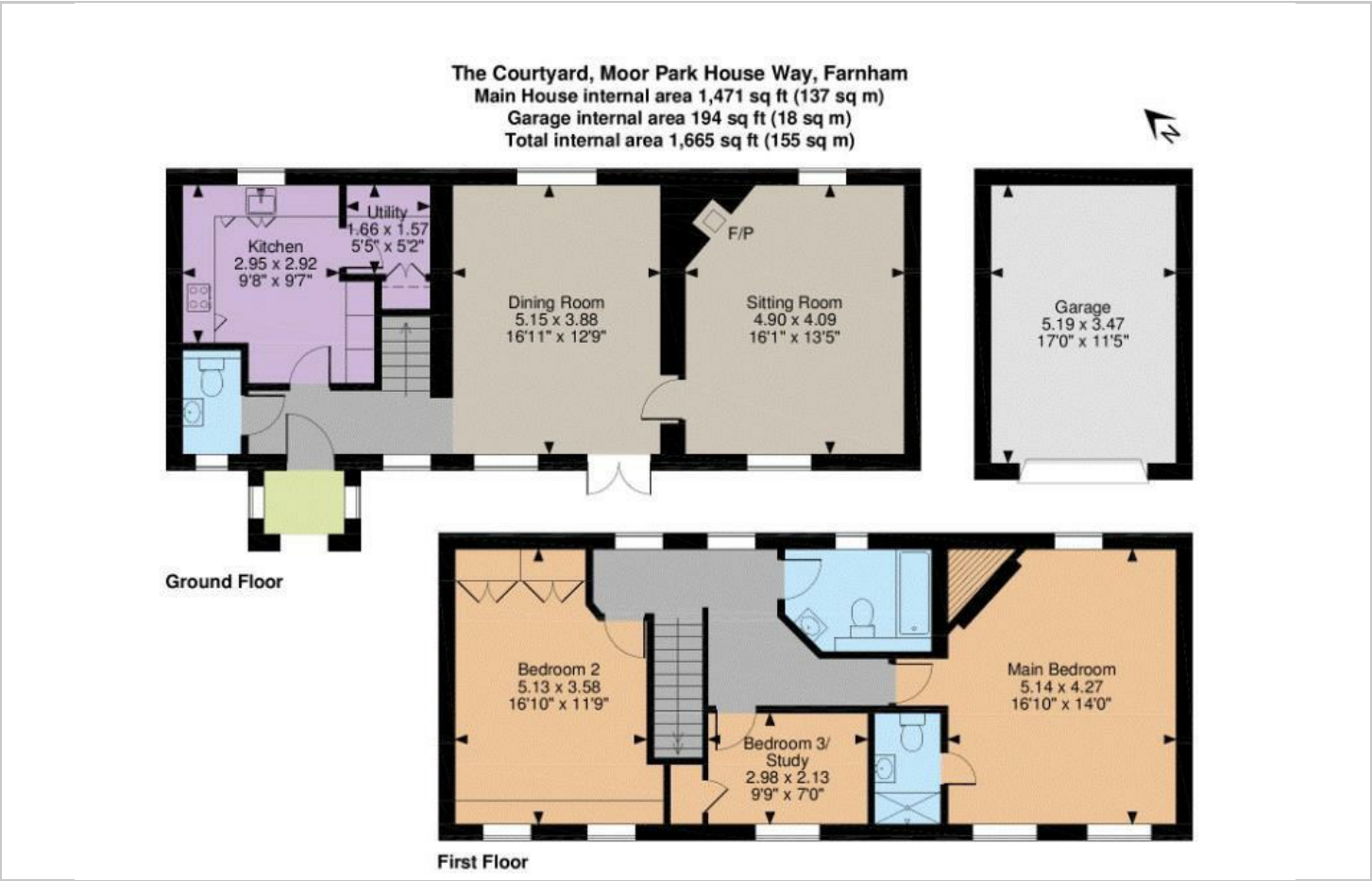
The upper floor has three bedrooms, the master suite has an en suite shower room and excellent storage with the two guest rooms share a family bathroom.

- Three Bedrooms
- Garage
- Period Build
- 12 Acres
- Private terrace
- Stunning Surrounds

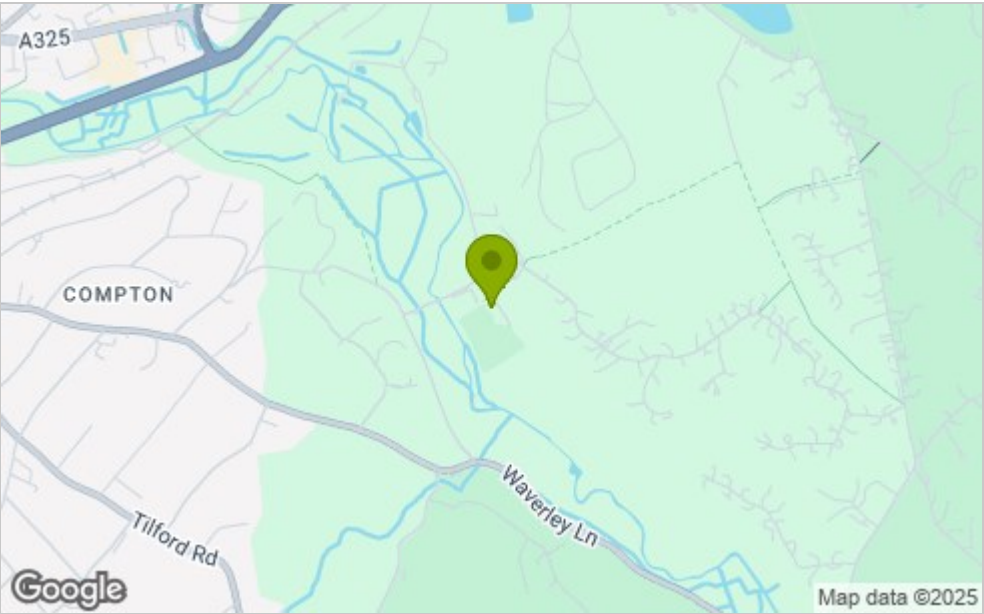




Floor Plan



Area Map



Viewing

Please contact our Chatterton Rees Office on 020 3780 0580 if you wish to arrange a viewing appointment for this property or require further information.

These particulars, whilst believed to be accurate are set out as a general outline only for guidance and do not constitute any part of an offer or contract. Intending purchasers should not rely on them as statements of representation of fact, but must satisfy themselves by inspection or otherwise as to their accuracy. No person in this firms employment has the authority to make or give any representation or warranty in respect of the property.

Energy Efficiency Graph

