



CHATTERTON | REES



38 Rawlings Street

, London, SW3 2LS

£2,995,000



3



3

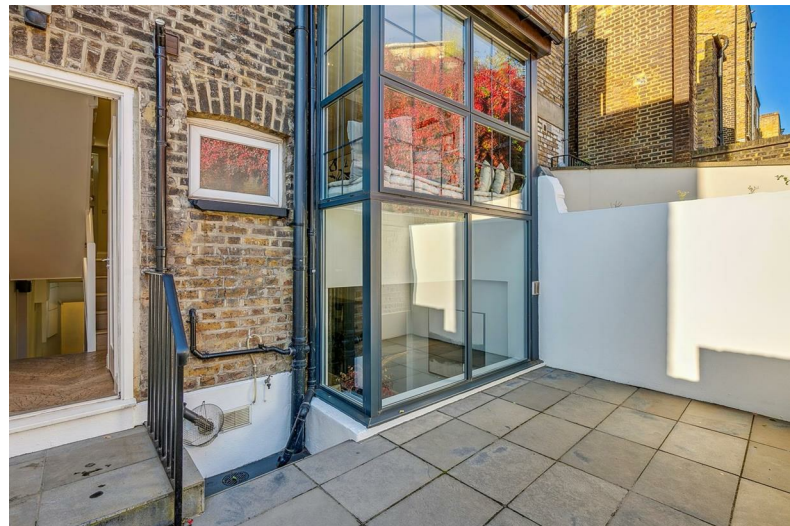


2



D

38 Rawlings Street



Description

This impeccably designed Chelsea home spans over 2,000 square foot of thoughtfully arranged living space, situated on a quiet and highly sought-after street.

The expansive open-plan kitchen features bespoke German cabinetry, Brazilian marble worktops and Miele appliances, creating an ideal environment for family gatherings and entertaining. The property also has a convenient utility room enhancing the practicality of daily living, two elegant reception rooms and access to a spacious patio garden offering a welcoming setting for outdoor dining.

The home is equipped with underfloor heating throughout, ensuring comfort year-round and features a comprehensive CCTV and alarm system for added security. The interiors showcase beautiful hardwood parquet flooring, complemented by an electronic door entry system for convenience and privacy. The residence boasts three well-appointed double bedroom suites, each with fitted bespoke cabinetry and marble bathrooms.

Additionally, planning permission has been granted for a three-storey rear extension across the ground,

- Freehold House
- 3 Bedrooms
- 3 Bathrooms
- Prime Chelsea Location
- Open Plan Kitchen & Living Space
- Private Patio

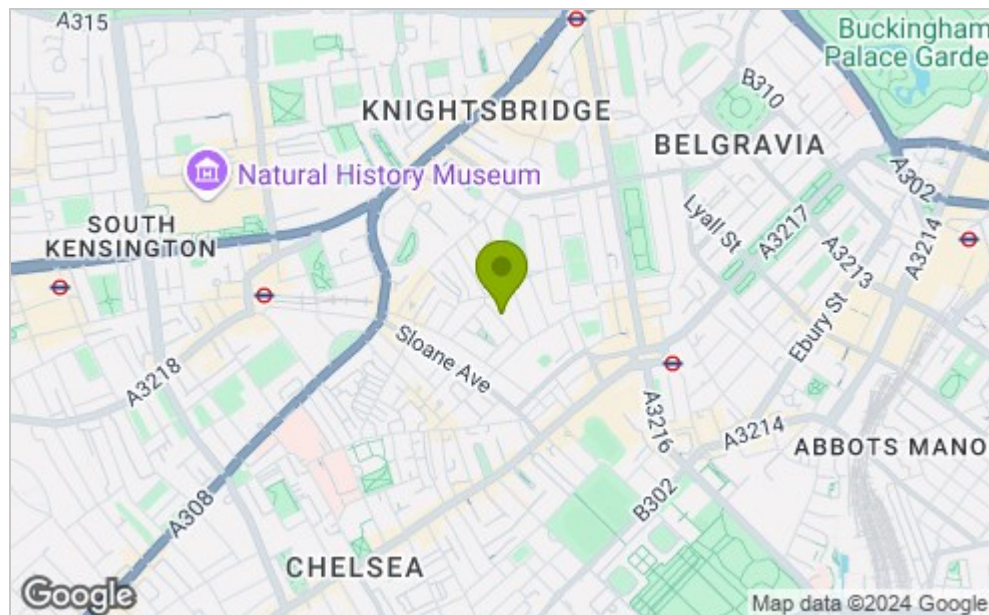




Floor Plan



Area Map



Viewing

Please contact our Chatterton Rees Office on 020 3780 0580 if you wish to arrange a viewing appointment for this property or require further information.

These particulars, whilst believed to be accurate are set out as a general outline only for guidance and do not constitute any part of an offer or contract. Intending purchasers should not rely on them as statements of representation of fact, but must satisfy themselves by inspection or otherwise as to their accuracy. No person in this firm's employment has the authority to make or give any representation or warranty in respect of the property.

Energy Efficiency Graph

