



CHATTERTON | REES



Chobham Park Lane, Woking, GU24 8HG  
£3,500,000





# Chobham Park Lane

Woking, GU24 8HG

- Detached
- Five Bathroom
- Indoor Pool
- Ground Source Heat Pump
- Five Bedroom
- Triple Garage
- Solar Panels
- 2 Acres

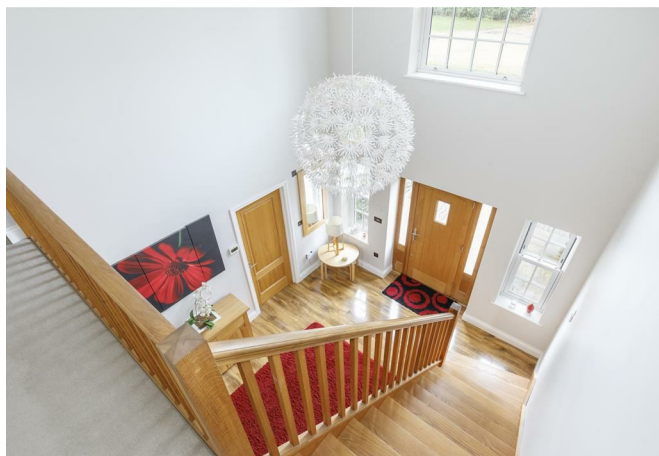
Situated in a private estate, Woodlands is a beautiful detached home with a triple garage on circa 2 acres.

Entering the property you are greeted with a fabulous vaulted reception hall that leads to all four large reception rooms. The feature log burner is a lovely addition whilst three large double French doors lead out to the patio area and gardens. There is a range of numerous integrated appliances, a large island unit with a four ring hob, large inset sink with mixture tap all of which is complimented by solid granite work surfaces. Porcelain floor tiling and under floor heating make this a fabulous room ideal for the whole family and for informal dining. The adjoining utility room has a range of base level units, inset sink with mixer tap with granite work tops and space for a washing machine and tumble drier.

On the first floor the property again offers an abundance of spacious accommodation comprising of five double bedrooms. The main bedroom has a large dressing room and full en-suite bathroom and enjoys views over the grounds to the rear. The four further bedrooms all have the benefit of their own en-suites, modern tiling and state of the art LED lighting.

The swimming pool complex has six double glazed French doors leading to a large patio terrace running the full length. The mosaic heated and insulated pool measures ten metres by five meters and is complimented by two further rooms which would work perfectly as a gym and guest area and have the use of shower and toilet facilities.

£3,500,000





## Directions





