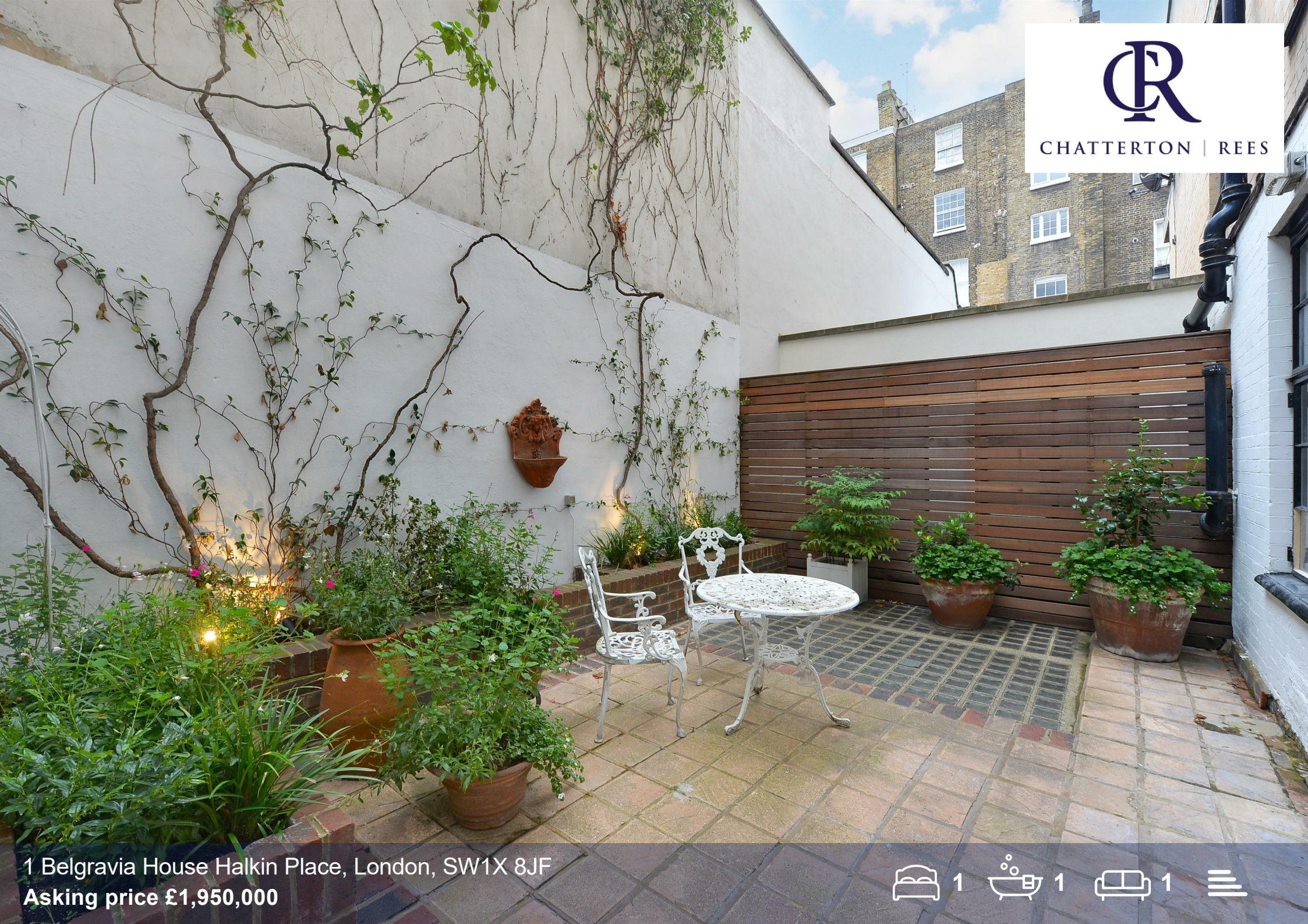




CHATTERTON | REES



1 Belgravia House Halkin Place, London, SW1X 8JF
Asking price £1,950,000





1 Belgravia House Halkin Place

London, SW1X 8JF

Asking price £1,950,000

Potential to extend into a large 2 bedroom

A wonderful opportunity to purchase large 1 bedroom flat in the heart of Belgravia. A great example of a perfect 1 bedroom, garden flat in this sought after portered building. The building benefits from a porter and being on the ground floor this unit is incredibly desirable. With a large master bedroom, huge reception room leading out onto your private patioed garden and a large kitchen with a breakfast area the flat offers a lot.

Belgravia House has recently gone through a communal refurb which is a huge plus to the new owner. Belgravia House is located a stones through from the popular Motcomb Street and just around the corner from Belgrave Square and Sloane Street. With many shops, restaurants and coffee shops on your doorstep the location doesn't get much better.



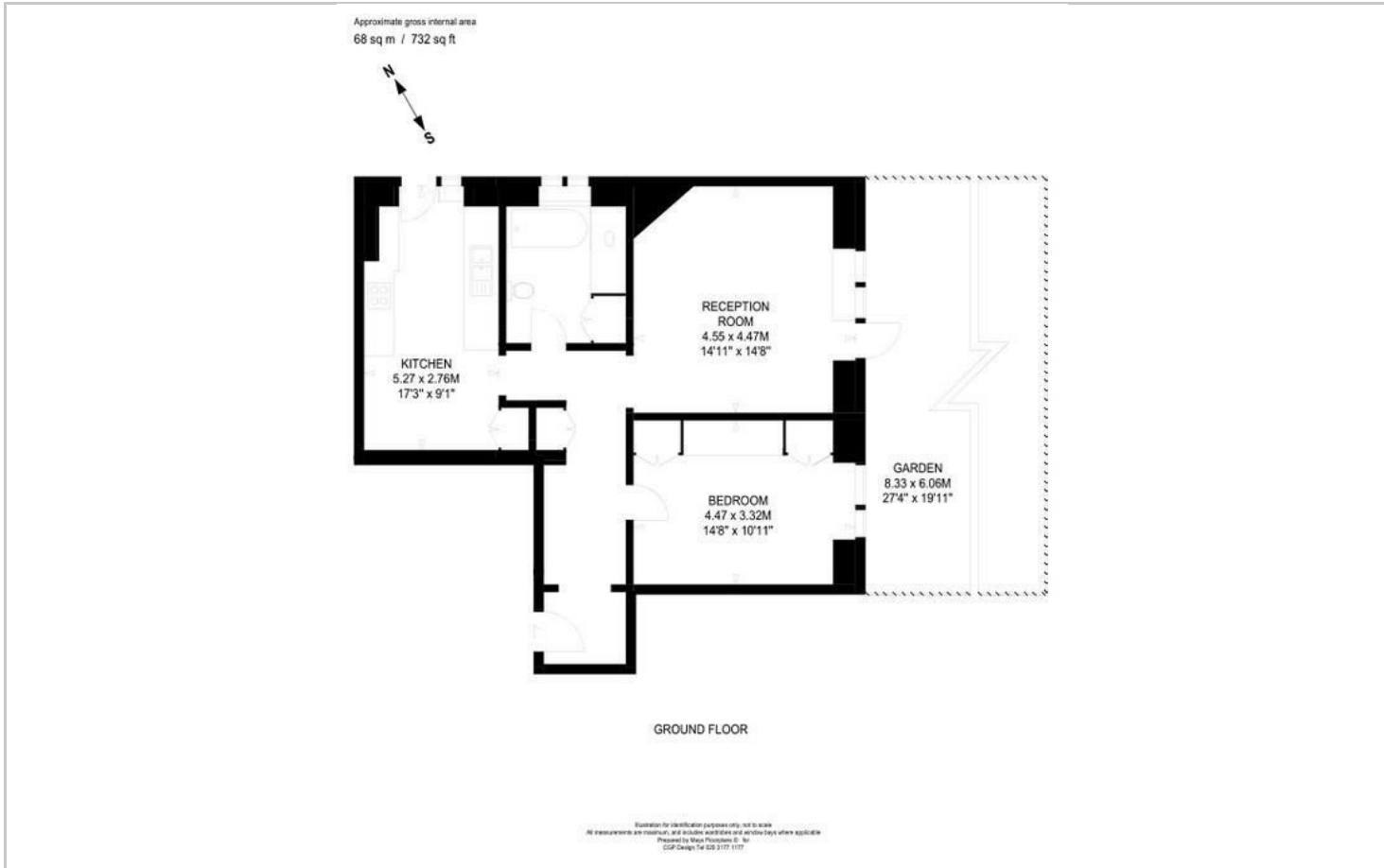


Directions

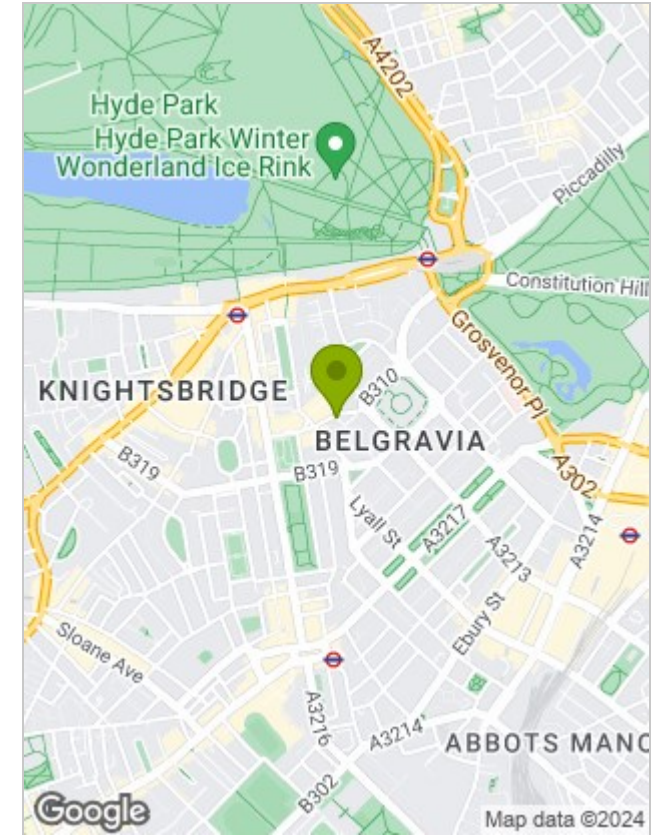




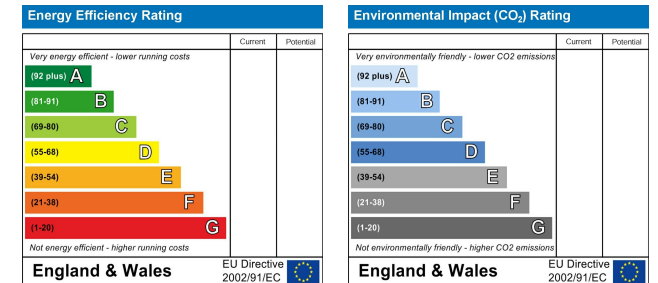
Floor Plans



Location Map



Energy Performance Graph



Viewing

Please contact our Chatterton Rees Office on 020 3780 0580 if you wish to arrange a viewing appointment for this property or require further information.

The particulars are set out as a general outline only for the guidance of intended purchasers or lessees, and do not constitute, any part of a contract. Nothing in these particulars shall be deemed to be a statement that the property is in good structural condition or otherwise nor that any of the services, appliances, equipment or facilities are in good working order. Purchasers should satisfy themselves of this prior to purchasing.