

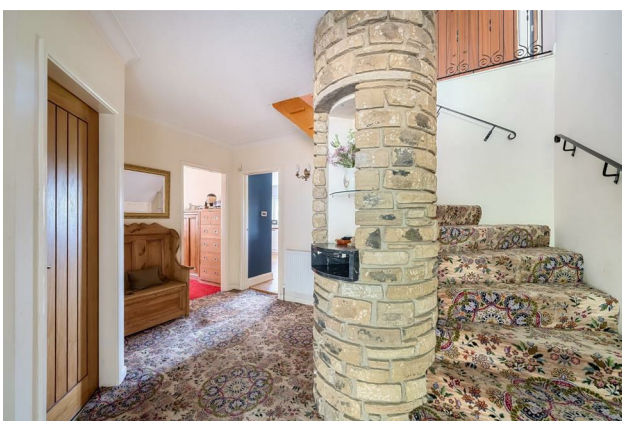
# HUNTERS®

HERE TO GET *you* THERE

Wheelgates Patrick Brompton, Bedale, Richmondshire, DL8 1JL

Offers In The Region Of £750,000

Property Images



# HUNTERS®

HERE TO GET *you* THERE

## Property Images

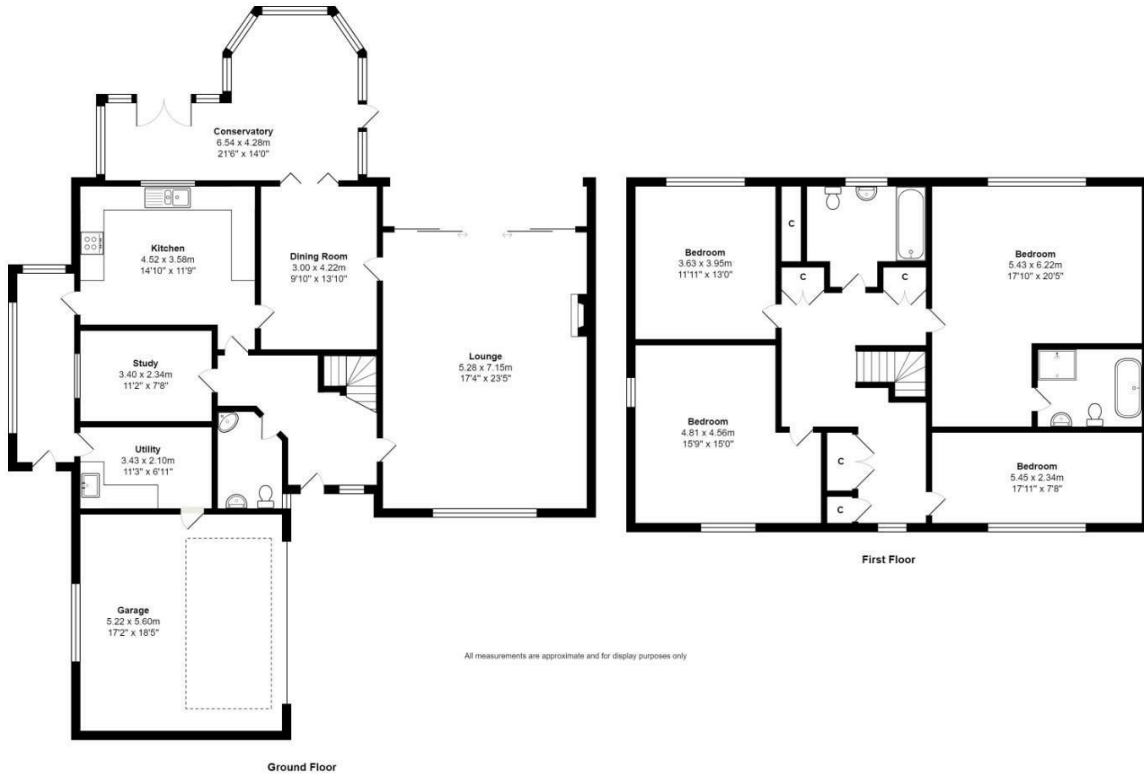


# HUNTERS<sup>®</sup>

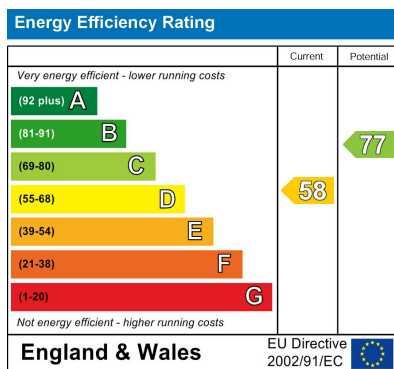
HERE TO GET *you* THERE

## Property Images





## EPC



## Map



## Details

Type: House - Detached Beds: 4 Bathrooms: 2 Receptions: 2 Tenure: Freehold

## Summary

\*\*\* DETACHED FOUR BEDROOM HOUSE WITH SEPARATE TWO BEDROOM BUNGALOW \*\*\* This fabulous detached home is perfect for families seeking a spacious and comfortable living space with the added benefit of accommodating dependant relatives as there is a beautiful separate detached bungalow set in the grounds offering independence to both parties. Both properties enjoy breathtaking views of the adjoining countryside and boasts a perfect blend of elegance and functionality.

This beautiful family home offers ample living space on entrance to and spacious hallway with unusual curved walled staircase that leads to the first floor. The Lounge is a fabulous size with cosy open fireplace, oak parquet flooring and floor to ceiling doors that lead to the the gardens. The kitchen is fitted with great range of wall and base units with plenty of space for a breakfast table, there is a separate dining room and utility room as well as a study/play room and a ground floor WC. To the first floor is a fantastic open landing with storage, four sizeable bedrooms, a large master bedroom having a modern en-suite bathroom and a further family bathroom. This property would benefit from some further improvements to enhance its charm.

The detached bungalow, situated within the same plot, offers luxurious interiors and is ideal for dependant relatives seeking their own private space. A cozy lounge area, designed for comfort and style, with a fully fitted kitchen with modern appliances. A utility room offers additional space for laundry and storage needs, enhancing the functionality of the home. Two well-appointed bedrooms provide comfortable living spaces. The bungalow includes a separate shower room, ensuring privacy and convenience for its residents. Designed with independence in mind, this bungalow allows dependant relatives to enjoy their own space while remaining close to the main family home.

There are lovely gardens with open views, double garage and driveway with plenty of parking.

### Features

- TWO DETACHED PROPERTIES A FOUR BED FAMILY HOME AND A DETACHED BUNGALOW
- MAIN HOME OFFERS THREE RECEPTION ROOMS AND CONSERVATORY
- FITTED KITCHEN AND UTILITY ROOM WITH SIDE PORCH
- GROUND FLOOR WC
- DETACHED BUNGALOW HAS LOUNGE AND FITTED KITCHEN
- TWO BEDROOMS AND UTILITY ROOM
- GARDENS TO BOTH PROPERTIES
- OPEN COUNTRYSIDE VIEWS
- DOUBLE GARAGE AND PARKING
- VILLAGE LOCATION CLOSE TO BEDALE AND LEYBURN