

HUNTERS[®]

HERE TO GET *you* THERE

7 Freemantle Place, Ripon, North Yorkshire, HG4 1UR

Guide Price £450,000

Property Images



HUNTERS®

HERE TO GET *you* THERE

Property Images



HUNTERS[®]

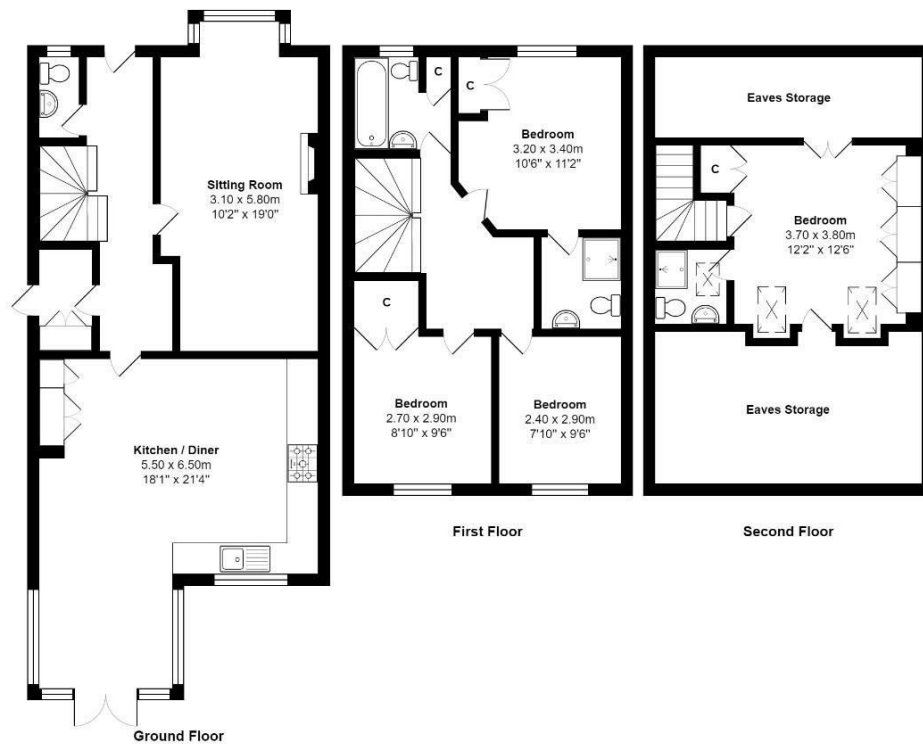
HERE TO GET *you* THERE

Property Images



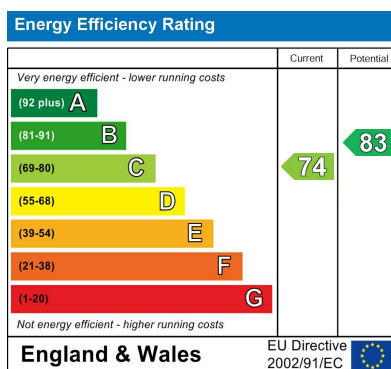
HUNTERS®

HERE TO GET *you* THERE

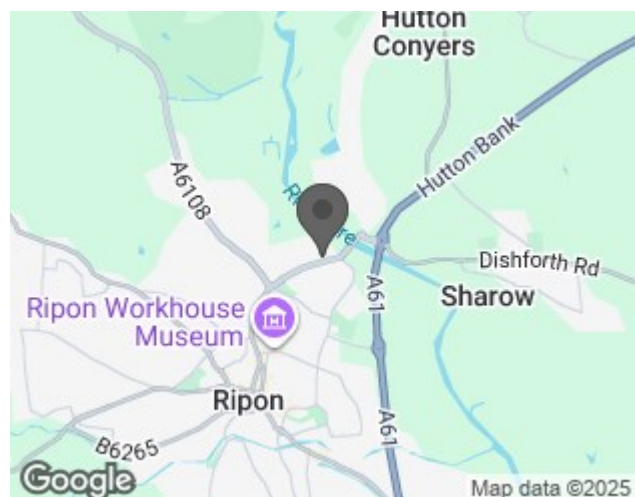


Total Area: 126.3 m² ... 1360 ft² (excluding eaves storage)
 All measurements are approximate and for display purposes only

EPC



Map



Details

Type: House - End Terrace Beds: 4 Bathrooms: 3 Receptions: 2 Tenure: Freehold

Summary

A beautifully presented four bedroom end town house set in this hidden location just a short walk from the city centre, offering spacious modern living accommodation set over three floors with lounge, open plan living dining kitchen, utility room, ground floor WC, two bedrooms with en-suite facilities, house bathroom, very private and beautifully manicured gardens to three sides, single garage and parking.

Comprising, entrance hallway with tiled floor and stairs to the first floor, WC, utility room with side access. There is a lovely bright lounge with wood flooring and bay window. The fabulous kitchen opens to the rear with a great range of fitted units with a centre island, separate seating area for dining, granite worktops, with sun lounge sitting area with Morso Nowegian multi burner, tiled floor and there are double doors that open to the garden.

To the first floor are three bedrooms, the guest bedroom has an en-suite shower room and there is a further house bathroom. To the second floor is a lovely spacious master bedroom with extensive fitted wardrobes, two velux style windows and en-suite shower room.

Externally there is a fabulous enclosed and relatively private gardens of generous proportions, laid mainly to lawn with fenced boundaries, paved patio area, small trees and shrubs as well as an enclosed seating area with timber pergola and separate fruit and vegetable garden.

The property sits in lovely quiet position and must be viewed to appreciate the privacy on offer.

Features

- FOUR BEDROOMS • OPEN PLAN LIVING KITCHEN • SPACIOUS LOUNGE • TWO BEDROOMS WITH EN-SUITE • GROUND FLOOR WC • EXTENSIVE PRIVATE GARDENS • CORNER PLOT • HIDDEN GEM LOCATION • SINGLE GARAGE AND PARKING • CLOSE TO THE CITY CENTRE