

HUNTERS®

HERE TO GET *you* THERE

29 St. James Meadow, Boroughbridge, York, YO51 9NW

Guide Price £279,950

Property Images



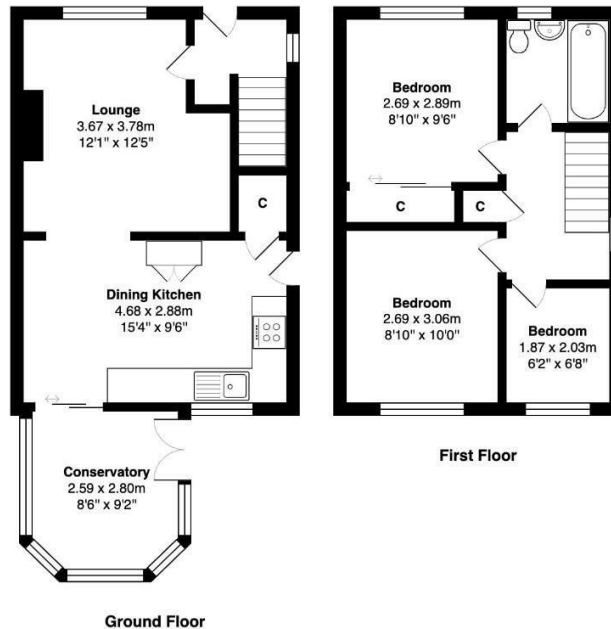
Property Images



HUNTERS®

HERE TO GET *you* THERE

Floorplan



Total Area: 71.2 m² ... 766 ft²

All measurements are approximate and for display purposes only

EPC

Energy Efficiency Rating		
	Current	Potential
Very energy efficient - lower running costs		
(92 plus) A		84
(81-91) B		
(69-80) C		
(55-68) D	64	
(39-54) E		
(21-38) F		
(1-20) G		
Not energy efficient - higher running costs		
England & Wales		EU Directive 2002/91/EC

Map



Details

Type: House - Semi-Detached Beds: 3 Bathrooms: 1 Reception: 1 Tenure: Freehold

Summary

Nestled in the charming area of St. James Meadow, Boroughbridge, this delightful three-bedroom semi-detached family home offers a perfect blend of comfort and convenience. Upon entering, you are welcomed into a spacious lounge, ideal for relaxation and family gatherings. The modern dining kitchen is a highlight, providing a stylish space for culinary adventures and entertaining guests.

The property boasts two double bedrooms, perfect for restful nights, alongside a single bedroom that can serve as a child's room, guest space, or home office. The well-appointed house bathroom caters to the needs of the household with ease.

One of the standout features of this home is the conservatory, which invites natural light and provides a lovely spot to enjoy the views of the rear enclosed garden. This established garden is a wonderful outdoor space, perfect for hosting summer barbecues with family and friends. Additionally, the property offers parking for multiple vehicles, ensuring convenience for residents and visitors alike. A large timber shed provides ample storage for gardening tools and outdoor equipment.

Situated within walking distance to local shops and amenities, as well as schools catering to all ages, this home is ideally located for families seeking a vibrant community. With its appealing features and prime location, this semi-detached house is a fantastic opportunity for those looking to settle in the picturesque Boroughbridge area.

Features

• IMMACULATE THREE BEDROOM SEMI DETACHED HOME - CHAIN FREE • NICE BRIGHT LOUNGE • MODERN FITTED DINING KITCHEN • CONSERVATORY • HOUSE BATHROOM • CENTRALLY HEATED AND DOUBLE GLAZED • LOVELY ESTABLISHED REAR GARDEN • PARKING FOR MULTIPLE VEHICLES • USEFUL LARGE TIMBER SHED • CLOSE TO LOCAL SHOPS AND AMENITIES AS WELL AS SCHOOLING FOR ALL AGES