

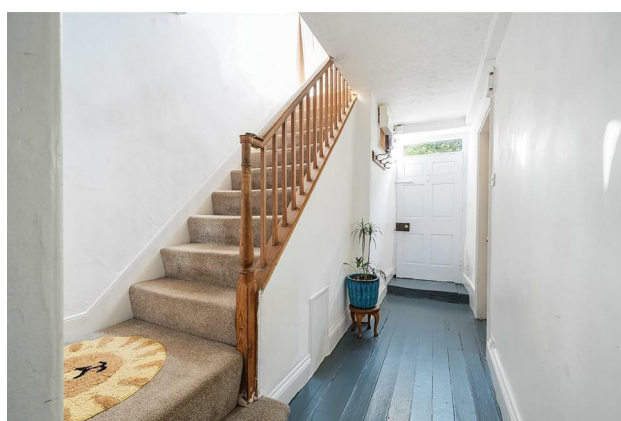
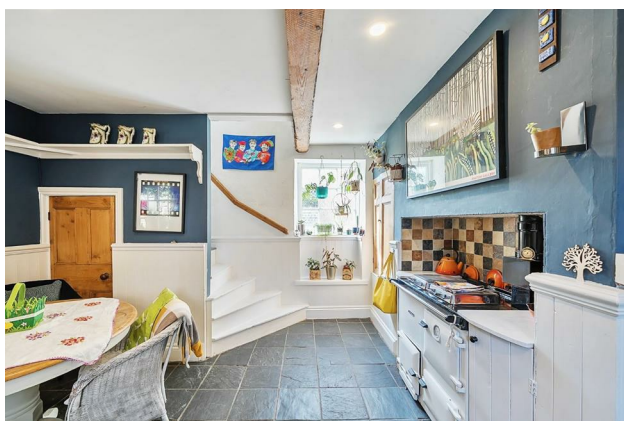
HUNTERS®

HERE TO GET *you* THERE

25 Park Street, Masham, Ripon, HG4 4HN

Guide Price £375,000

Property Images



HUNTERS[®]

HERE TO GET *you* THERE

Property Images



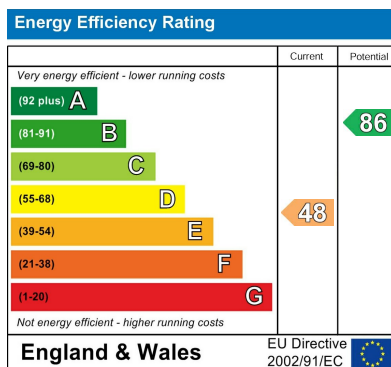
HUNTERS®

HERE TO GET *you* THERE

Floorplan



EPC



Map



Details

Type: House - Mid Terrace Beds: 3 Bathrooms: 1 Receptions: 2 Tenure: Freehold

Summary

Nestled in the charming heart of Masham, this delightful three-bedroom period cottage offers a unique blend of character and modern living. Dating back to before 1900, the property exudes traditional charm while providing ample space for comfortable family life.

Upon entering, you are welcomed into the spacious hallway with wooden floors which leads to two inviting reception rooms, the lounge with fire surround and log burner and the dining room with beamed ceiling and fire surround, perfect for both relaxation and entertaining. The kitchen features a classic Rayburn and a range of fitted units with useful under stairs cupboard ideal for those who appreciate the art of cooking and the warmth it brings to the home.

There are three good sized bedrooms two with period cast iron fireplaces. The house bathroom is conveniently located, serving the three spacious bedrooms that provide a peaceful retreat at the end of the day.

The rear enclosed garden offers a private outdoor space for gardening, play, or simply enjoying the fresh air. Additionally, the property boasts an undeveloped outbuilding, presenting a fantastic opportunity for a variety of uses, whether it be a workshop, studio, or additional storage.

Situated in a vibrant community with local amenities, shops, and scenic walks right on your doorstep. With its period features and potential for personalisation, this property is a rare find in the desirable location of Park Street, Masham. Don't miss the chance to make this enchanting cottage your own.

Features

• PERIOD TOWN CENTRE COTTAGE • THREE DOUBLE BEDROOMS • TWO RECEPTION ROOMS • DINING KITCHEN WITH RAYBURN RANGE STYLE COOKER • HOUSE BATHROOM • REAR ENCLOSED GARDEN • UNDEVELOPED STONE OUTBUILDING • CENTRALLY HEATED • TOWN CENTRE LOCATION