

HUNTERS[®]

HERE TO GET *you* THERE

19 Roecliffe Park, Roecliffe, York, YO51 9LY

Guide Price £210,000

Property Images



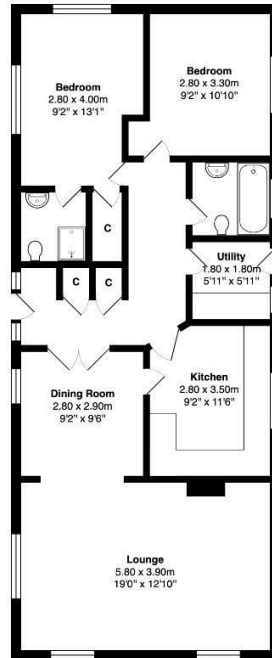
HUNTERS®

HERE TO GET *you* THERE

Property Images



Floorplan

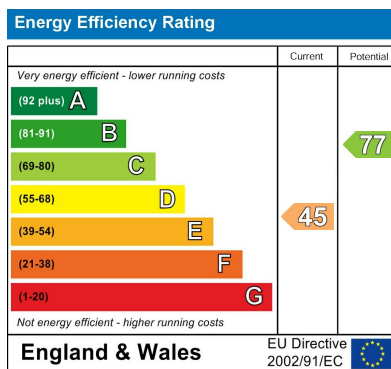


Ground Floor

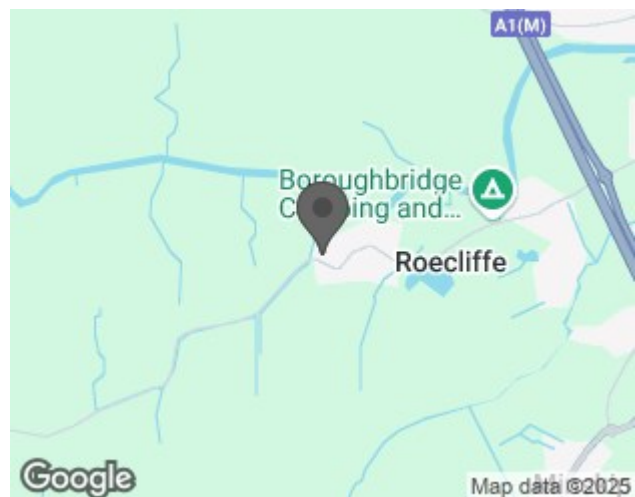
Total Area: 86.1 m² ... 926 ft²

All measurements are approximate and for display purposes only

EPC



Map



Details

Type: Park home Beds: 2 Bathrooms: 1 Receptions: 1 Tenure: Leasehold

Summary

Nestled in the tranquil setting of Roecliffe Park, Roecliffe, this charming two-bedroom park home offers a delightful blend of comfort and convenience. The property is situated on a full residential site, making it an ideal choice for those seeking a peaceful lifestyle.

Upon entering, you are welcomed into a spacious lounge adorned with dual aspect windows, allowing natural light to flood the room. This inviting space seamlessly flows into a dining area, perfect for entertaining guests or enjoying meals. The kitchen is well-equipped with extensive units and ample worktop space, catering to all your culinary needs. Additionally, a separate utility room provides convenient access to the side of the property.

The park home boasts two generously sized double bedrooms, both featuring fully fitted furniture for optimal storage. The master bedroom is particularly impressive, complete with an en-suite shower room and a walk-in wardrobe, ensuring a private retreat for relaxation. The house bathroom is fitted with a three-piece suite including a panelled bath, adding to the overall appeal of the home.

Outside, the property offers parking for two vehicles, ensuring ease of access. A charming sitting area to the side and rear provides a perfect spot for enjoying the outdoors, while a useful storage shed adds practicality to the space.

This well-presented park home is an excellent opportunity for those looking to embrace a serene lifestyle in a picturesque location. With its spacious accommodation and thoughtful design, it is sure to impress.

Features

• TWO DOUBLE BEDROOMS WITH FITTED FURNITURE • SPACIOUS LOUNGE WITH DUAL ASPECT WINDOWS • SEPARATE DINING ROOM • FITTED MODERN KITCHEN AND SEPARATE UTILITY ROOM • BATHROOM • DRIVEWAY FOR TWO CARS AND GARDEN/SITTING AREA • FULL RESIDENTIAL SITE • SET IN THE HEART OF THIS LOVELY VIALLGE LOCATION • DOUBLE GLAZED AND CENTRALLY HEATED • SITE FEES £1800 ANNUALLY