

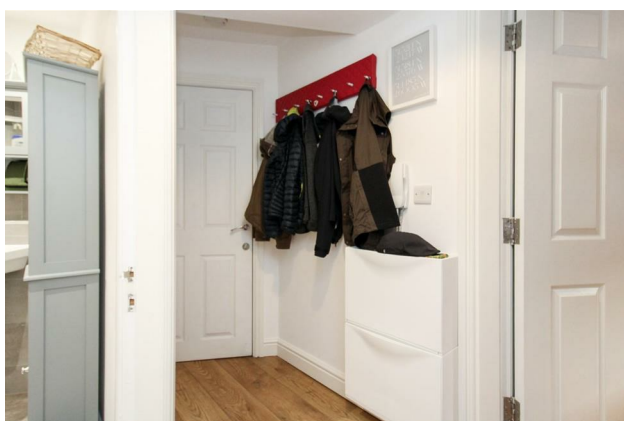
HUNTERS®

HERE TO GET *you* THERE

Flat 4 The Warehouse, Court Terrace, Ripon, North Yorkshire, HG4 1AX

Guide Price £115,000

Property Images



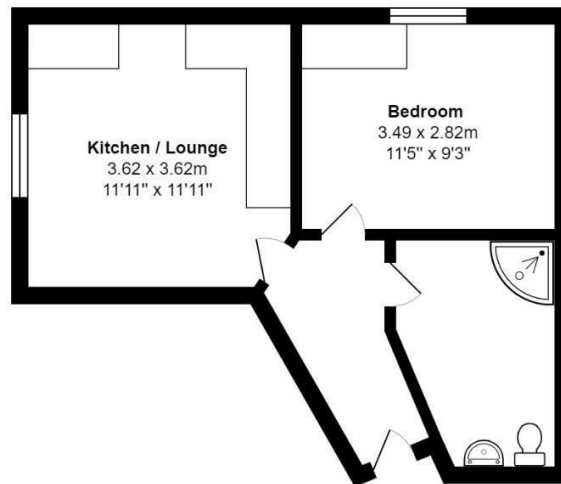
HUNTERS[®]

HERE TO GET *you* THERE

Property Images



Floorplan



Ground Floor

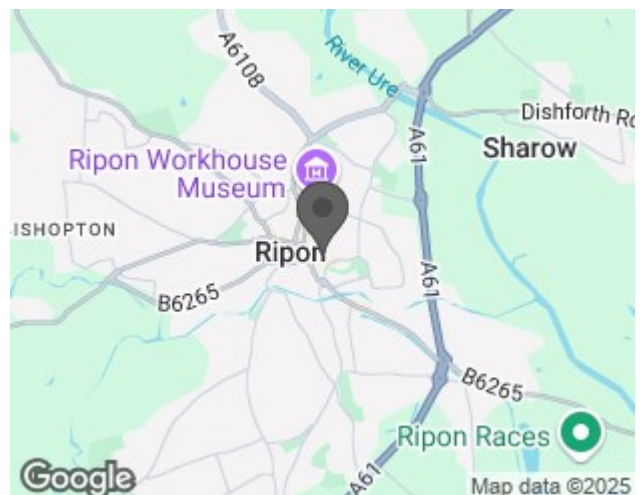
Total Area: 34.3 m² ... 369 ft²

All measurements are approximate and for display purposes only

EPC

Energy Efficiency Rating		
	Current	Potential
Very energy efficient - lower running costs		
(92 plus) A		
(81-91) B		
(69-80) C	76	76
(55-68) D		
(39-54) E		
(21-38) F		
(1-20) G		
Not energy efficient - higher running costs		
England & Wales	EU Directive 2002/91/EC	

Map



Details

Type: Flat Beds: 1 Bathrooms: 1 Receptions: 1 Tenure: Leasehold

Summary

*** Fantastic first time buyer home at a brilliant new price*** A well presented and modern one bedroom first floor apartment situated just off the city centre in a quiet set back position with views of the cathedral.

Comprising; side entrance steps to the first floor in to communal hall with access to the apartment. The apartment has intercom phone access in the hall.

There is an open plan lounge/kitchen with front window with rooftop views towards the cathedral, fitted modern wall and base units with built in electric single oven, hob and fridge freezer with space for washing machine. There is a double bedroom with wardrobes (that are available to purchase separately) window to the side and spacious shower room with a modern fitted suite.

This property is an ideal buy to let option at a monthly rent of around £625 or first time buyer. The lease is 125 years from 2016 with a monthly service charge of £100. The apartment also owns 1/4 freehold and therefore will become a director of the management company of the building. The property comes with double glazing and independent electric radiators which have temperature and timed controls.

The property is literally on the doorstep of the city centre with all amenities on hand including, shops, bars and restaurants as well as recreational facilities

Features

• MODERN ONE BEDROOM APARTMENT • OPEN PLAN LIVING KITCHEN • SPACIOUS SHOWER ROOM • DOUBLE BEDROOM • DOUBLE GLAZING • FIRST FLOOR ACCOMMODATION • VIEWS TOWARDS OF THE CATHEDRAL • CITY CENTRE LOCATION • SECURITY PHONE ENTRANCE