

# HUNTERS®

HERE TO GET *you* THERE

6 Ronway Avenue, Ripon, HG4 2NW

Price Guide £425,000

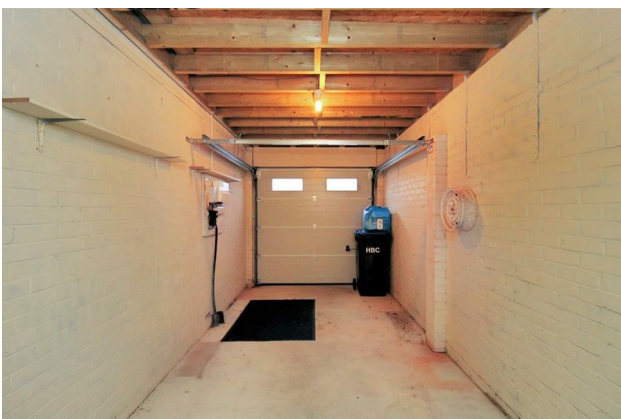
Property Images



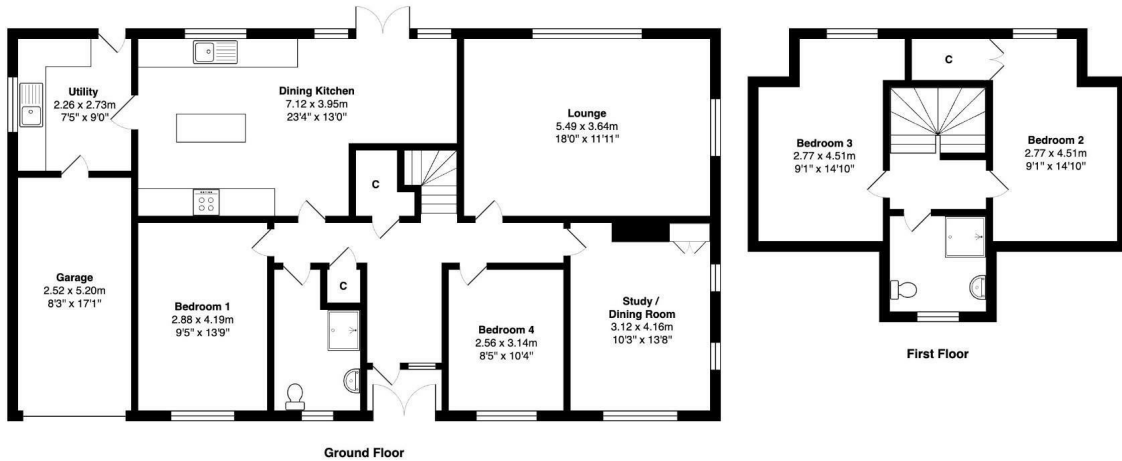
# HUNTERS<sup>®</sup>

HERE TO GET *you* THERE

## Property Images

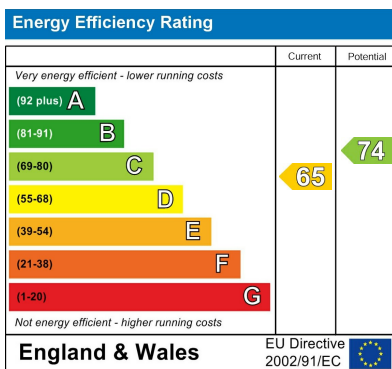


## Floorplan



Total Area: 165.8 m<sup>2</sup> ... 1784 ft<sup>2</sup>  
 All measurements are approximate and for display purposes only

## EPC



## Map



## Details

Type: Bungalow - Detached Beds: 4 Bathrooms: 2 Receptions: 2 Tenure: Freehold

## Summary

\*\*\* GUIDE PRICE OFFERS BETWEEN £425,000 - £450,000 \*\*\* Welcome to this extensive detached bungalow set on two floors with modern fixtures and fittings set in this very desirable location on the outskirts of the city within easy reach of the city centre with surrounding gardens, integral garage and parking for multiple vehicles.

On entrance in to the spacious hallway with ample storage cupboards, a must for any home, a bright lounge and modern fitted dining kitchen with double doors to the garden, a separate utility room with direct access to the garden and the attached single garage.

There is second reception room which is ideal as a study or dining room and also to the ground floor are two double bedrooms and a modern shower room.

To the second floor are two further double bedrooms and modern shower room

The property benefits from well planned and mature gardens to the rear and side with various sitting areas, lawn and planted borders.

There is an in and out drive which offers parking for multiple vehicles and an attached single garage. The property comes with double glazing and central heating throughout and is a must see property to appreciate the position and space on offer.

NO ONWARD CHAIN

## Features

• FOUR DOUBLE BEDROOMS TWO TO THE GROUND FLOOR • TWO RECEPTION ROOMS • SPACIOUS MODERN DINING KITCHEN • SEPARATE AND SPACIOUS UTILITY ROOM WITH DIRECT ACCESS TO THE SINGLE GARAGE • TWO FURTHER BEDROOMS TO THE FIRST FLOOR AND SHOWER ROOM • GOOD STORAGE THROUGHOUT • SURROUNDING MATURE GARDENS • PARKING FOR MULTIPLE VEHICLES WITH IN AND OUT DRIVEWAY • SINGLE GARAGE WITH POWER • CENTRALLY HEATED AND DOUBLE GLAZED