

HUNTERS®

HERE TO GET *you* THERE

Willow Springs Laverton, Ripon, HG4 3SX

Asking Price £375,000

Property Images



HUNTERS®

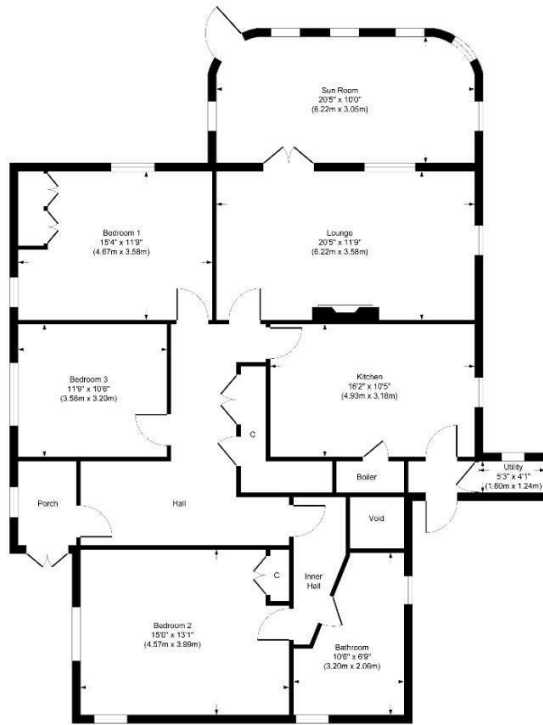
HERE TO GET *you* THERE

Property Images



Floorplan

Approximate Gross Internal Area
1613 sq ft - 150 sq m



Although every attempt has been made to ensure accuracy, all measurements are approximate. This floorplan is for illustrative purposes only and not to scale. Measured in accordance with RICS Standards.

EPC

Energy Efficiency Rating		Current	Potential
<i>Very energy efficient - lower running costs</i>			
(92 plus) A			86
(81-91) B			
(69-80) C			
(55-68) D			
(39-54) E			
(21-38) F			
(1-20) G		8	
<i>Not energy efficient - higher running costs</i>			
England & Wales		EU Directive 2002/91/EC	

Map



Details

Type: Bungalow - Detached Beds: 3 Bathrooms: 1 Receptions: 1 Tenure: Freehold

Summary

OFFERED FOR SALE WITH NO ONWARD CHAIN. Nestled within the highly sought after village of Laverton, with ease of access to amenities in Kirkby Malzeard, this spacious stone built detached bungalow offers a rare opportunity to own a charming home in an idyllic setting. The property, now in need of some modernisation, is brimming with potential, making it an ideal choice for those looking to restore it to its former glory or explore the extensive plot with runs down to the river Laver and its possibilities offering a fabulous lifestyle opportunity.

Inside, the bungalow features three well proportioned bedrooms, providing ample space for family living or guest accommodation. The dining kitchen is a welcoming space, ready to be transformed into a modern culinary haven. The large lounge, complete with a fireplace, offers a cozy room while the expansive conservatory, with its views of the beautiful mature garden.

Externally, the property boasts extensive and beautifully maintained gardens that surround the home, offering a peaceful and private outdoor space. The outbuildings provide valuable storage options, and the garage, along with a spacious driveway, ensures parking for multiple vehicles.

This property presents a unique opportunity for those with a vision, whether you're looking to create your dream home with its prime location in Laverton and its abundance of character and space, this bungalow is a must see. Don't miss the chance to make it your own!

Features

• DETACHED BUNGALOW • FABULOUS EXTENSIVE PLOT WHICH RUNS DOWN TO THE RIVER - APPROX 1 ACRE • THREE DOUBLE BEDROOMS • DINING KITCHEN • LOUNGE AND CONSERVATORY • SHOWER ROOM • EXTENSIVE SURROUNDING GARDENS • DRIVEWAY • GARAGE • NO ONWARD CHAIN