

HUNTERS®

HERE TO GET *you* THERE

44 Whitcliffe Drive, Ripon, HG4 2JX

Offers In The Region Of £350,000

Property Images



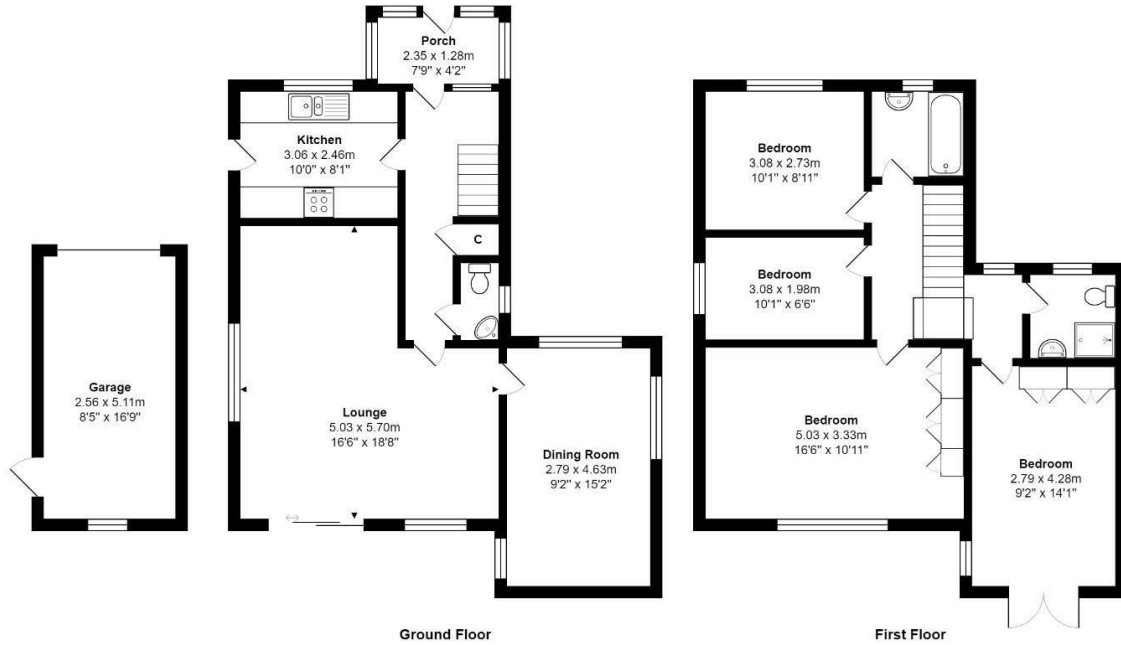
HUNTERS®

HERE TO GET *you* THERE

Property Images



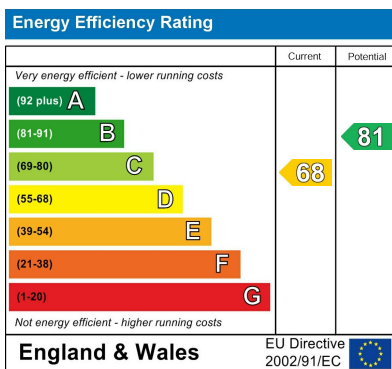
Floorplan



Total Area: 131.3 m² ... 1413 ft²

All measurements are approximate and for display purposes only

EPC



Map



Details

Type: House - Detached Beds: 4 Bathrooms: 2 Receptions: 2 Tenure: Freehold

Summary

A spacious and extended four bedroom detached family home set on a corner plot with surrounding gardens, single garage and parking.

Offering spacious interiors with a modern fitted kitchen, L shaped lounge with doors to the rear garden, separate dining room in the extension, ground floor WC and useful porch.

To the first floor are four bedrooms, three doubles one with fitted wardrobes and doors that open to a balcony and this bedroom benefits from a separate shower room, a further good sized single bedroom and a separate house bathroom.

Externally there is a lawn garden to the front and side with mature hedging and planted borders, with gated access to the rear to an enclosed easy maintenance paved garden with direct access to the garage and parking area.

Set in this convenient position close to the main route to the city centre.

Features

• FOUR BEDROOM DETACHED PROPERTY • TWO RECEPTION ROOMS • MODERN FITTED KITCHEN • GROUND FLOOR WC • HOUSE BATHROOM AND SEPARATE SHOWER ROOM • SURROUNDING GARDENS • SINGLE GARAGE WITH PARKING • CENTRALLY HEATED AND DOUBLE GLAZED