

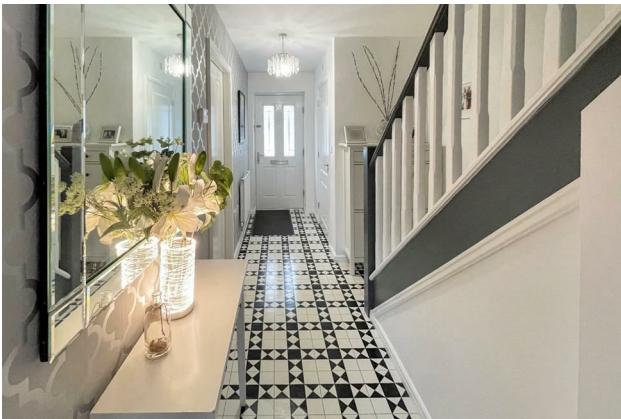
# HUNTERS®

HERE TO GET *you* THERE

66 Bellman Walk, Ripon, HG4 2TY

Asking Price £100,000

Property Images



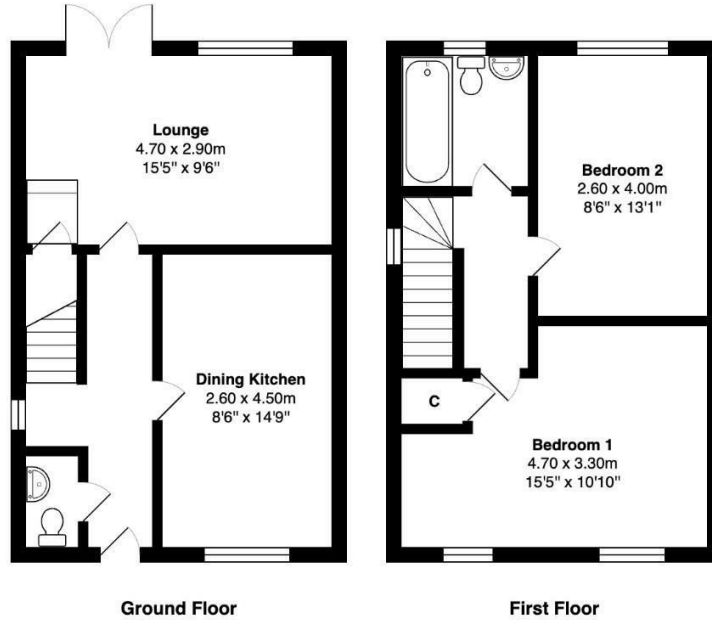
# HUNTERS<sup>®</sup>

HERE TO GET *you* THERE

## Property Images

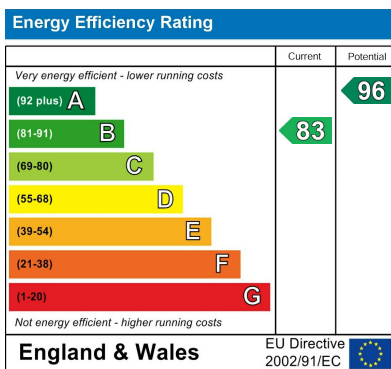


## Floorplan



All measurements are approximate and for display purposes only

## EPC



## Map



## Details

Type: House - Semi-Detached Beds: 2 Bathrooms: 1 Receptions: 1 Tenure: Freehold

## Summary

Nestled within the esteemed Bishops Glade development, just off Doublegates and Clothierholme Road, awaits an exceptional opportunity to own a modern semi-detached house through shared ownership.

Offered for sale with a 40% share, you are greeted by an inviting entrance hall that sets the tone for the contemporary living experience offered within. The heart of the home lies in the modern fitted dining kitchen, with built in oven and hob.

Adjoining the kitchen, the lounge beckons with its warmth and comfort, offering a perfect space for relaxation and entertainment. Patio doors seamlessly merge indoor and outdoor living, providing effortless access to the charming rear garden.

Convenience is key with the inclusion of a downstairs WC, offering practicality without compromising on style.

Ascending to the first floor, two well-appointed bedrooms await, each providing a serene retreat for rest. A modern fitted bathroom suite completes the upper level, boasting contemporary fixtures.

Externally, the property continues to impress with its thoughtfully designed outdoor spaces. The enclosed rear garden, laid mainly to lawn, offers a private oasis for outdoor gatherings, complemented by a patio area ideal for alfresco dining and a garden shed for additional storage needs.

To the front, a driveway provides off-street parking, enhancing the convenience of everyday living.

Perfectly situated for a variety of potential buyers, the property benefits from its proximity to popular schools, ensuring educational excellence is within easy reach.

The 60% share is £342.87 per month.

## Features

• 40% SHARED OWNERSHIP • MODERN SEMI DETACHED HOUSE • MODERN FITTED DINING KITCHEN • LOUNGE • DOWNSTAIRS WC • TWO BEDROOMS • MODERN FITTED BATHROOM • ENCLOSED REAR GARDEN • DRIVEWAY • EPC RATING B