

HUNTERS®

HERE TO GET *you* THERE

Briar Lea Fishergreen, Ripon, HG4 1NL

Guide Price £339,500

Property Images



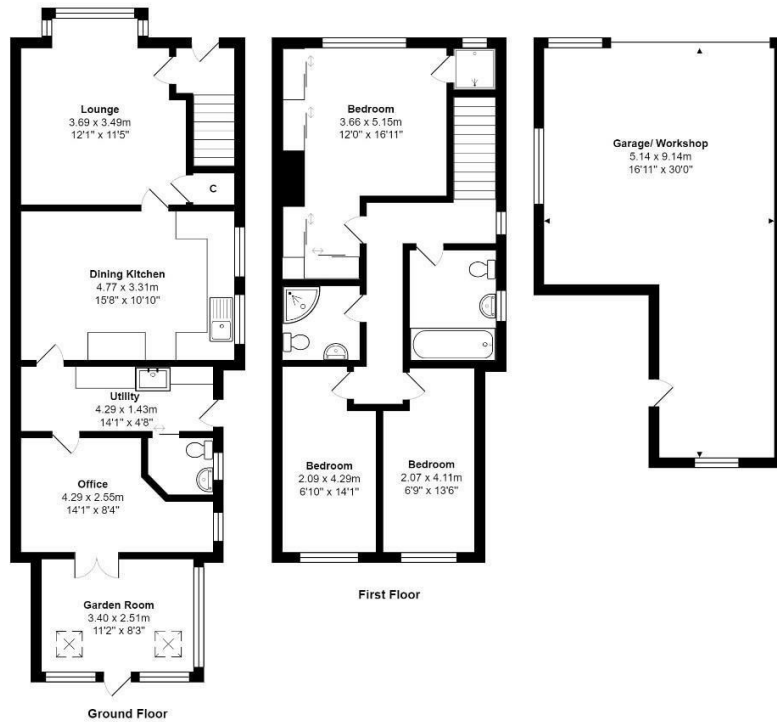
HUNTERS[®]

HERE TO GET *you* THERE

Property Images

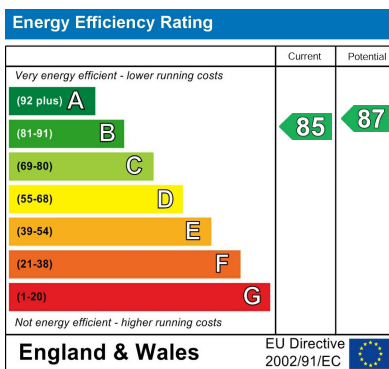


Floorplan

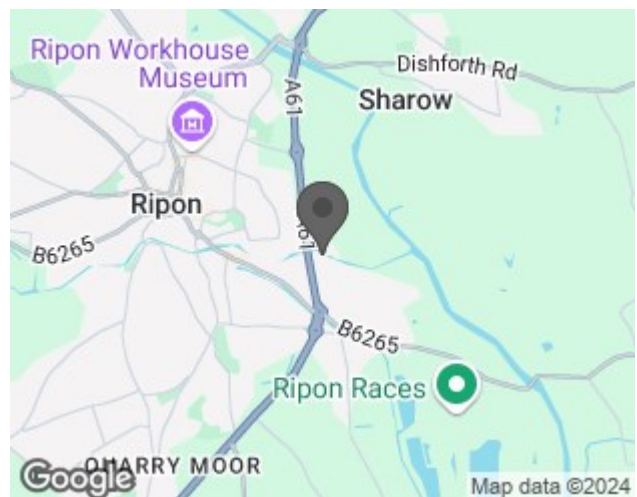


Total Area incl Garage/Workshop : 150.7 m² ... 1622 ft²
 All measurements are approximate and for display purposes only.

EPC



Map



Details

Type: House - Semi-Detached Beds: 3 Bathrooms: 1 Receptions: 2 Tenure: Freehold

Summary

*** Unexpectedly back on the market due to chain breakdown*** Nestled in the heart of Ripon this extended double-storey traditional-style semi-detached house offers an idyllic blend of comfort, functionality, and picturesque surroundings. Boasting a desirable location, this charming residence presents a quintessential riverside living experience.

Upon entering, you are greeted by a welcoming entrance hall, where the warmth of the lounge beckons with the crackle of a wood-burning stove, providing the perfect setting for cozy evenings. The spacious dining kitchen offers ample room, featuring built in fridge freezer, dishwasher, microwave and provisions for a Rangemaster cooker. Adjacent lies a convenient separate utility room, along with a downstairs WC for added convenience.

For those in need of a dedicated workspace, a study awaits, offering a serene environment conducive to productivity and focus. The property further extends its appeal with a garden room, providing an inviting space to unwind.

Ascending to the first floor, you'll discover three bedrooms, including a master en-suite shower. Completing the accommodations are a meticulously appointed house bathroom, featuring a luxurious Jacuzzi bath for indulgent baths, and an additional attractive house shower room, ensuring every need is met with style and sophistication.

Externally, the property is enveloped by well-maintained gardens to the front and rear, laid mainly to lawn. Practical amenities include a shed and log store for storage convenience, a garage for secure vehicle accommodation, and a further workshop catering to various hobbyist pursuits. A driveway provides ample off-street parking, accommodating multiple vehicles with ease.

In summary, this extended home offers an unparalleled opportunity to embrace a riverside lifestyle in Ripon's desirable locale. With its blend of modern comforts, charming aesthetics, and scenic vistas, this property embodies the essence of tranquil riverside living.

Features

• EXTENDED SEMI DETACHED HOUSE • THREE BEDROOMS • MASTER EN SUITE SHOWER • HOUSE BATHROOM & HOUSE SHOWER ROOM • DINING KITCHEN • UTILITY ROOM & DOWNSTAIRS WC • TWO RECEPTION ROOMS & GARDEN ROOM • GARAGE & WORKSHOP • GARDENS • DRIVEWAY