

HUNTERS®

HERE TO GET *you* THERE

The White Lodge Galphay, Ripon, HG4 3NJ

Offers Over £475,000

Property Images



HUNTERS®

HERE TO GET *you* THERE

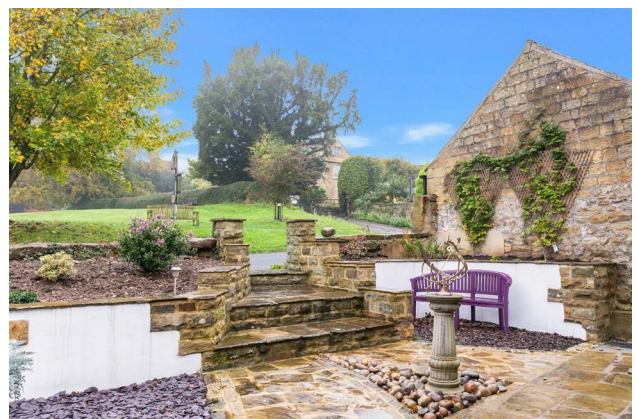
Property Images



HUNTERS®

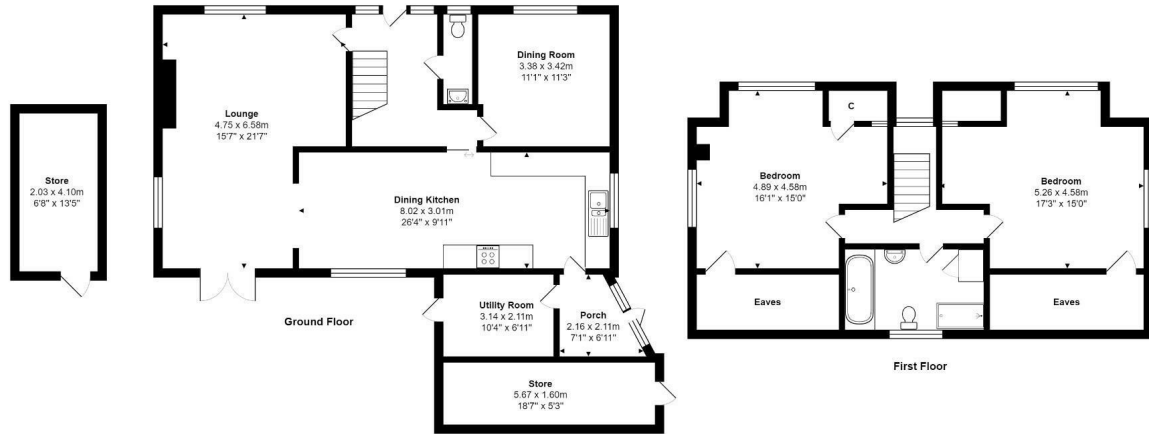
HERE TO GET *you* THERE

Property Images



HUNTERS®

HERE TO GET *you* THERE

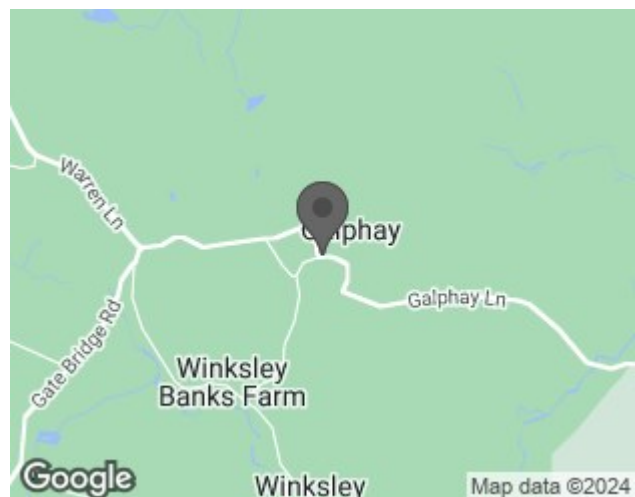


Total Area: 142.0 m² ... 1528 ft² (excluding store, eaves)
 All measurements are approximate and for display purposes only

EPC

Energy Efficiency Rating		Current	Potential
Very energy efficient - lower running costs			
(92 plus) A			83
(81-91) B			
(69-80) C			
(55-68) D		65	
(39-54) E			
(21-38) F			
(1-20) G			
Not energy efficient - higher running costs			
England & Wales		EU Directive 2002/91/EC	

Map



Details

Type: House - Detached Beds: 3 Bathrooms: 1 Receptions: 1 Tenure: Freehold

Summary

Welcome to "The White Lodge," a truly exceptional detached home in the idyllic village of Galphay, just a short drive from the charming city of Ripon.

This recently modernised property has been thoughtfully updated to provide a comfortable and sustainable lifestyle. One of its standout features is the solar panel system, equipped with two batteries, ensuring not only reduced energy costs but also an environmentally conscious way of living.

The interior is thoughtfully designed, featuring a new modern kitchen that's perfect for culinary enthusiasts and an open plan kitchen diner, creating an inviting space for gatherings and family meals, a well-proportioned lounge which includes a wood burning stove for those cold winter evenings. There is also a cozy snug or ground floor bedroom depending on how you wish to use the space, ideal for relaxation

To the first floor are two spacious double bedrooms with eaves storage, the fresh and modern new bathroom adds a touch of luxury.

For those who appreciate a well-organized space, the property includes a utility room for your daily tasks and externally a store room/workshop offering additional storage or creative space, this also houses the new, efficient oil-fired boiler to keep you warm during colder seasons.

The outdoor space is equally appealing, with a private rear garden that includes a patio area, perfect for outdoor dining, entertaining, or simply enjoying the peaceful surroundings. The front of the house offers seating areas and provides delightful views overlooking the village green, showcasing the natural beauty of the area. To the rear is private parking for multiple cars.

"The White Lodge" in Galphay harmoniously combines modern amenities with the tranquility of village life, making it an extraordinary property to call home.

Contact us today to schedule a viewing and experience the charm and convenience of this exceptional residence for yourself.

Features

- FABULOUS FLEXIBLE TWO/THREE BEDROOM DETACHED HOME • OPEN PLAN MODERN LIVING • GROUND FLOOR WC AND THIRD BEDROOM OR SNUG • RECENTLY FITTED MODERN AND PRACTICAL KITCHEN AND BATHROOM • BEAUTIFUL INTERIORS THROUGHOUT • PLENTY OF STORAGE - UTILITY AND SEPARATE STORE • VERY PRIVATE LANDSCAED GARDEN WITH PERGOLA GREAT FOR ENTERTAINING • PARKING FOR MULTIPLE VEHICLES • FITTED SOLAR PANELS FOR ECONOMICAL LIVING • BEAUTIFUL VILLAGE LOCATION OVER LOOKING VILLAGE GREEN