



Ashton Road, Norton - TS20 1QP  
Stockton-On-Tees



£210,000





## Ashton Road

Norton, Stockton-On-Tees

This beautifully extended three bedroom semi detached home is situated in the sought after area of The Glebe in Norton, offering an ideal setting for families and first time buyers. The property benefits from UPVC double glazing and gas central heating, ensuring comfort and energy efficiency throughout. Upon entering, you are welcomed by a bright entrance hall leading to a generous lounge, featuring a large full width window that fills the space with natural light. The spacious modern kitchen diner is a true highlight, boasting integrated appliances and a central island (perfect for both every-day living and entertaining). Upstairs, the landing provides access to three well proportioned bedrooms and a family bathroom. Additional features include a driveway and garage, offering ample parking and storage solutions. Finished to a high standard, this property combines practical living spaces with stylish design. Located close to local amenities and transport links, it presents an excellent opportunity for those seeking a move in ready home in a desirable location. Early viewing is highly recommended to fully appreciate the quality and space this property has to offer.

***WE ARE OBLIGED UNDER THE TERMS OF THE ESTATE AGENTS ACT THAT TO DISCLOSE THE FOLLOWING INFORMATION. THE OWNER OF THIS PROPERTY A RELATIVE OF A STAFF MEMBER AT NORTHGATE ESTATE AGENTS / NORTHGATE ESTATES (NE) LTD AND THEREFORE SHOULD YOU WISH TO SEEK INDEPENDENT ADVICE IN RELATION TO ANY OFFER, WE WOULD RECOMMEND THAT YOU CONTACT YOUR SOLICITOR OR OTHER SUITABLE REPRESENTATIVE.***

Council Tax band: B

Tenure: Freehold

EPC Energy Efficiency Rating:

EPC Environmental Impact Rating:





### Entrance Hall

15' 11" x 6' 0" (4.85m x 1.82m)

### Lounge

16' 0" x 11' 8" (4.87m x 3.55m)

### Kitchen/Diner

15' 9" x 17' 3" (4.79m x 5.27m)

### Landing

10' 10" x 6' 0" (3.31m x 1.82m)

### Bathroom

5' 7" x 6' 5" (1.70m x 1.95m)

### Bedroom 1

15' 11" x 9' 6" (4.85m x 2.90m)

### Bedroom 2

7' 9" x 12' 0" (2.36m x 3.65m)

### Bedroom 3

7' 10" x 12' 0" (2.39m x 3.65m)







**GARDEN**

**GARAGE**

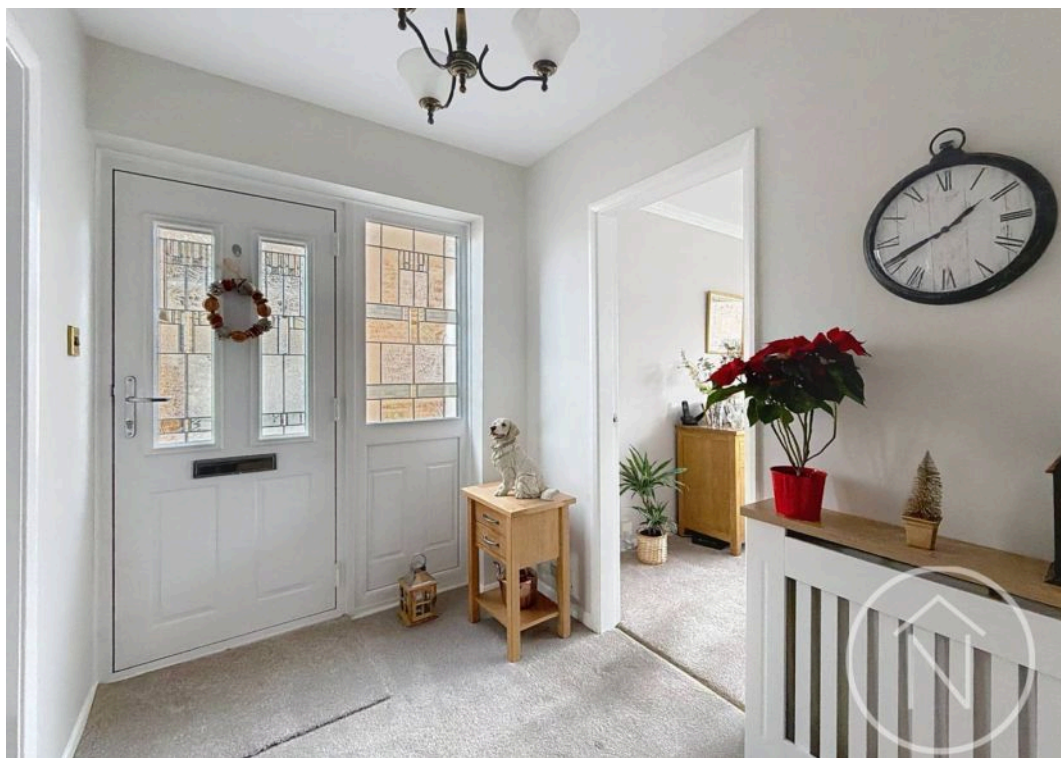
Single Garage

**DRIVEWAY**

2 Parking Spaces







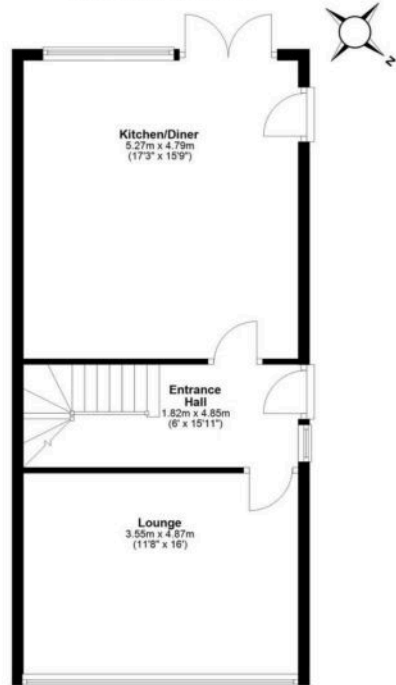






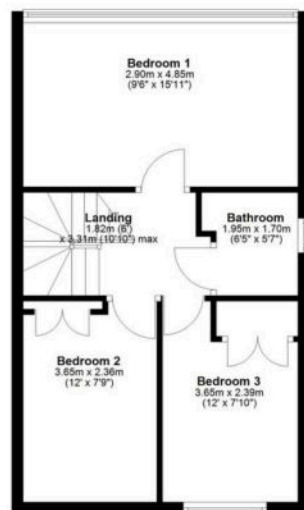
### Ground Floor

Approx. 52.3 sq. metres (563.3 sq. feet)



### First Floor

Approx. 41.6 sq. metres (447.7 sq. feet)



Total area: approx. 93.9 sq. metres (1010.9 sq. feet)





## Northgate - Teesside

8 Town Square, Billingham - TS23 2LY

01642 813222

[billingham@northgates.net](mailto:billingham@northgates.net)

[www.northgates.co.uk/](http://www.northgates.co.uk/)

While we have made efforts to ensure the accuracy of the information provided in our sales particulars, please note that we have gathered this information from the seller. Should you require further details or clarification on any specific matter, we kindly request you to contact our office where we are ready to gather evidence or conduct further investigations on your behalf. It is important to note that Northgate has not tested any of the services, appliances, or equipment within this property. Therefore, we strongly recommend that prospective buyers arrange for their independent surveys or service reports before finalising the purchase of the property.