



Wilmire Road, Billingham

Billingham



Guide Price £140,000 - £150,000





## Wilmire Road, Wolviston Court

Offers Invited Between £140,000 And £150,000

A two bedroom semi detached bungalow situated on Wolviston Court in Billingham available with no onward chain. the property benefits from a driveway, garage, south facing garden, solar panels, gas central heating & UPVC double glazing. In brief the accommodation comprises:

Entrance Hall  
Lounge  
Kitchen  
Bathroom  
Two Bedrooms  
Conservatory

- Two Bedroom Semi Detached Bungalow
- No Onward Chain
- Solar Panels & South Facing Rear Garden
- Driveway & Garage
- UPVC Double Glazing & Gas Central Heating
- Energy Efficiency Rating: B
- Council Tax Band: C | Tenure: Freehold





**Entrance Hall**

**Lounge**

15' 0" x 10' 11" (4.57m x 3.33m)

**Kitchen**

11' 1" x 10' 11" (3.37m x 3.32m)

**Bathroom**

4' 10" x 7' 5" (1.47m x 2.27m)

**Bedroom One**

11' 11" x 10' 11" (3.63m x 3.33m)

**Bedroom Two**

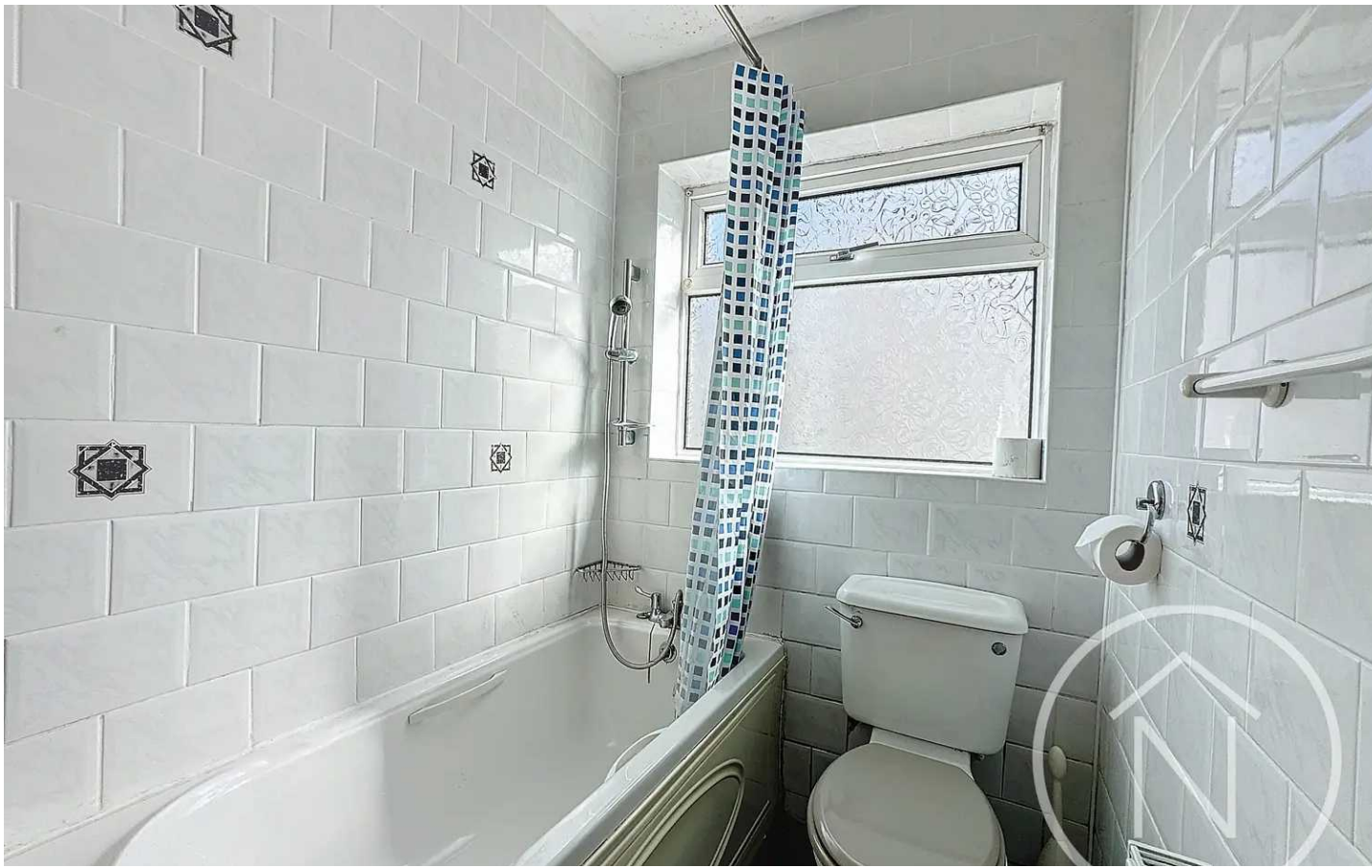
10' 11" x 10' 11" (3.33m x 3.32m)

**Conservatory**

7' 10" x 10' 11" (2.40m x 3.33m)

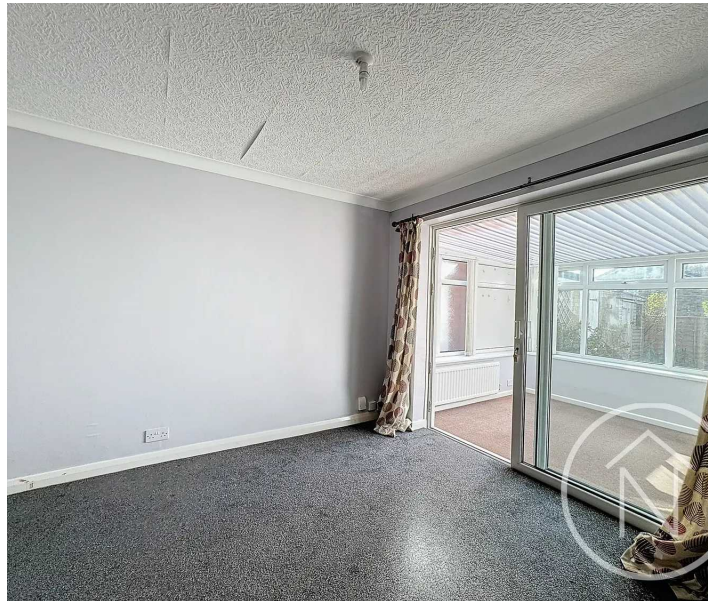






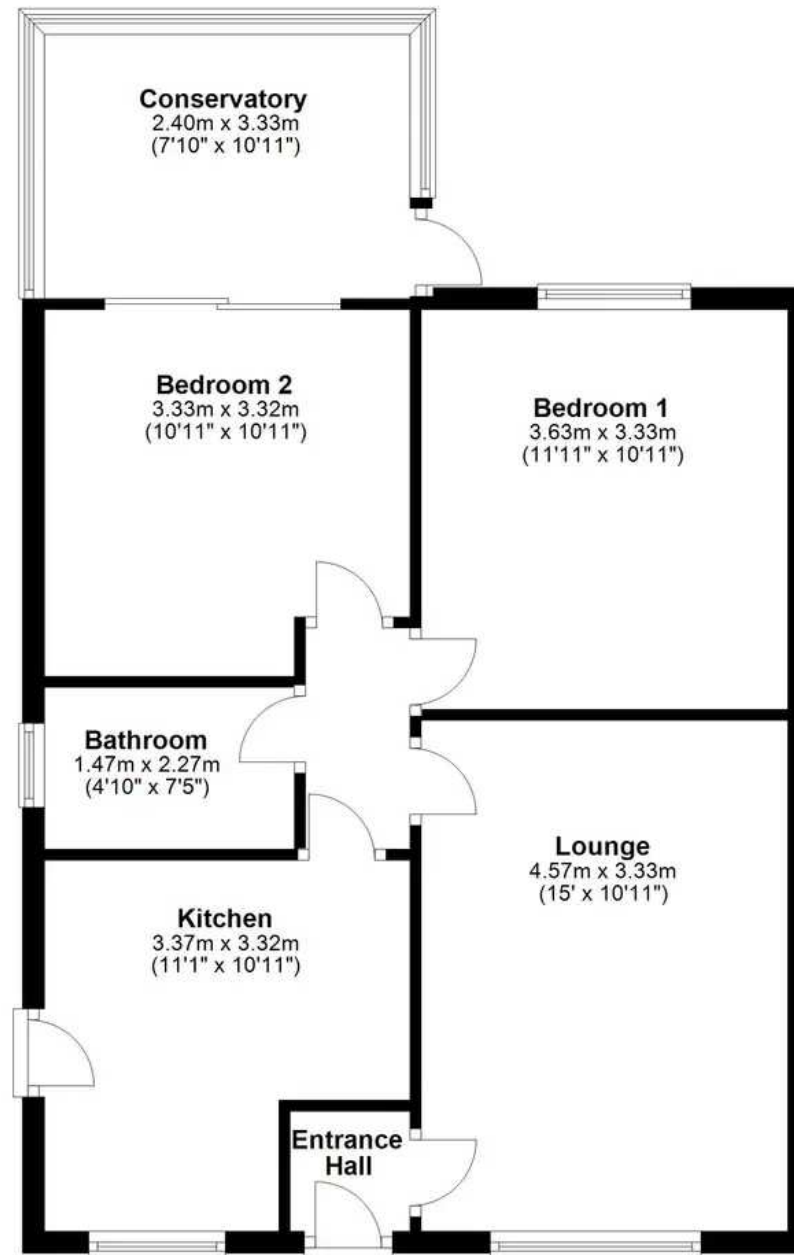
GARAGE

DRIVEWAY



## Ground Floor

Approx. 64.5 sq. metres (694.6 sq. feet)



Total area: approx. 64.5 sq. metres (694.6 sq. feet)

floor plan(s) by Northgate<sup>2</sup> for illustration purpose only all measurements are approximate.  
Plan produced using PlanUp.





## Northgate - Teesside

8 Town Square, Billingham - TS23 2LY

01642 813222 • [billingham@northgates.net](mailto:billingham@northgates.net) • [www.northgates.co.uk/](http://www.northgates.co.uk/)

