



11 Speeton Close, Billingham
Billingham



Offers In Excess Of £220,000



11 Speeton Close

Billingham, Billingham

Offers In Excess Of £220,000

Welcome to this beautifully presented and extended three-bedroom detached house, situated in a desired cul-de-sac location. Upon entering the property, you are greeted by a spacious entrance hall, leading to a convenient ground floor W/C. The ground floor boasts a generous lounge, providing ample space for relaxation, a versatile family room, perfect for entertaining guests, and a stunning kitchen/diner with patio doors leading to the rear garden.

The well-maintained west-facing rear garden is sure to impress, offering a tranquil space for outdoor enjoyment. The property also benefits from UPVC double glazing and gas central heating, ensuring energy efficiency and comfort throughout the year.

The first floor accommodation comprises a landing, a stylish family bathroom, and three well-proportioned bedrooms. The property also benefits from a driveway, providing convenient off-street parking. This delightful home is perfect for families seeking a comfortable and spacious living environment.

With its modern interiors and desirable location, this property is sure to capture the attention of discerning buyers. Don't miss out on the opportunity to make this house your dream home.



- Extended Three Bedroom Detached
- Driveway Providing Off Street Parking
- Ground Floor W/C
- West Facing Rear Garden
- UPVC Double Glazing & Gas Central Heating
- Energy Efficiency Rating: C | Council Tax: C | Tenure: Freehold

Entrance Hall

Lounge

13' 3" x 13' 4" (4.03m x 4.07m)

Ground Floor Wc

5' 7" x 3' 0" (1.70m x 0.92m)

Family Room

17' 2" x 7' 3" (5.22m x 2.20m)

Kitchen/Diner

10' 10" x 17' 10" (3.29m x 5.43m)

Utility Room

8' 0" x 7' 5" (2.45m x 2.25m)

Landing

8' 6" x 6' 2" (2.58m x 1.87m)

Bathroom

7' 1" x 6' 10" (2.15m x 2.09m)

Bedroom One

14' 2" x 11' 7" (4.31m x 3.52m)

Bedroom Two

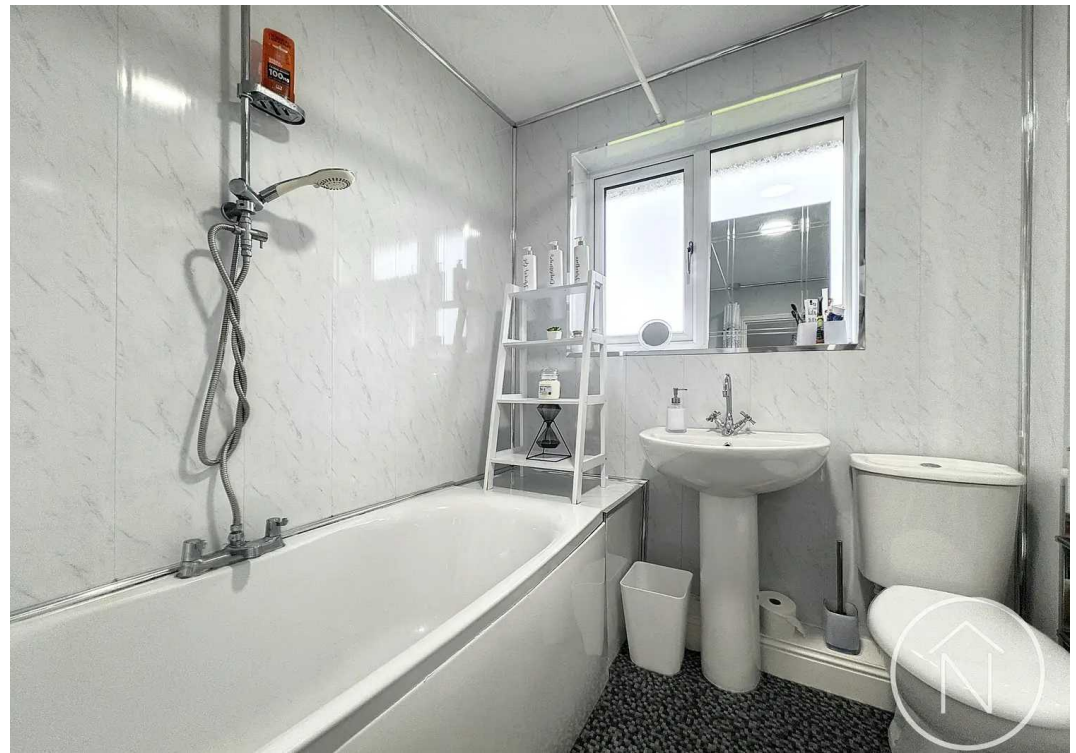
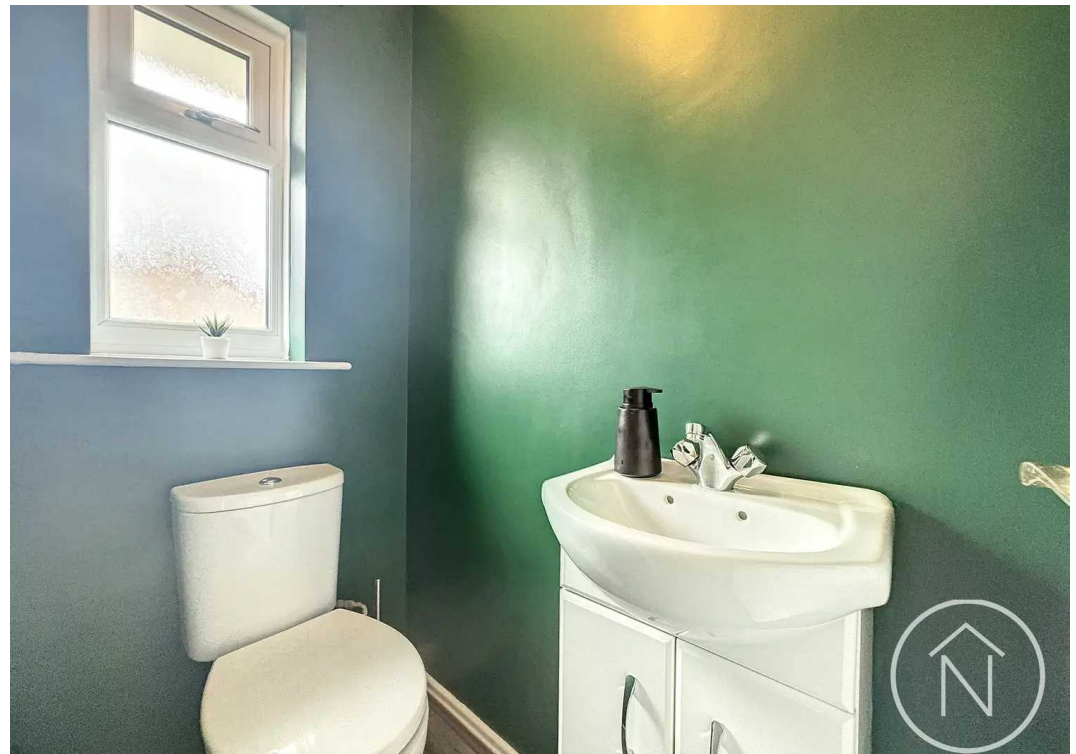
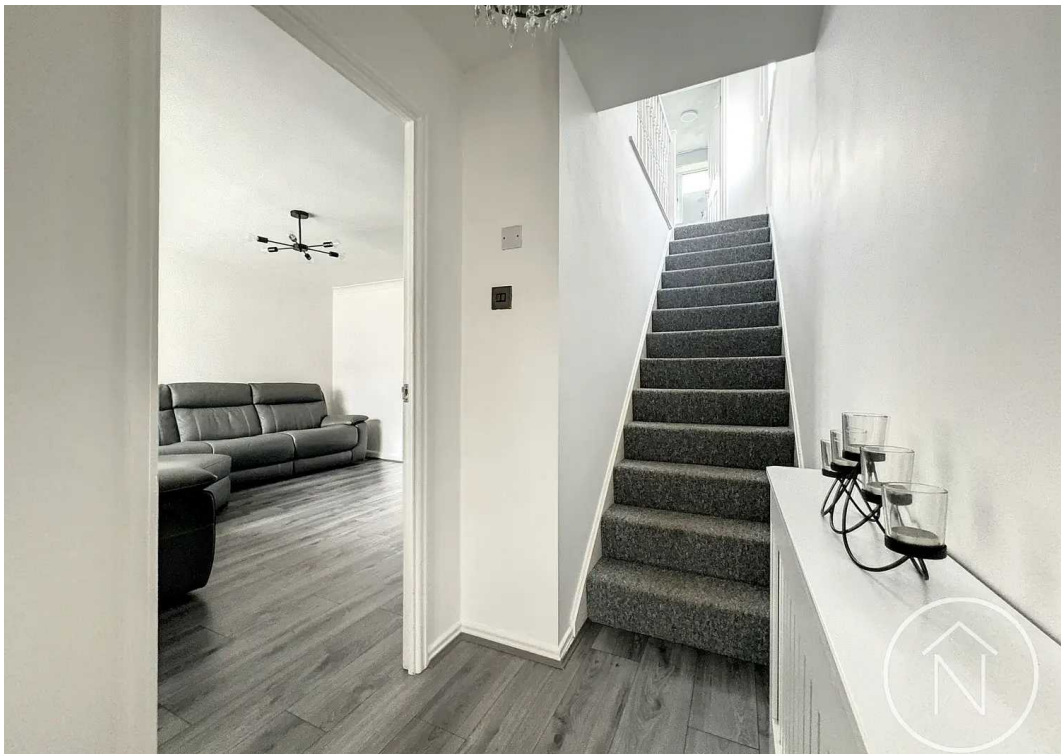
10' 2" x 11' 7" (3.11m x 3.52m)

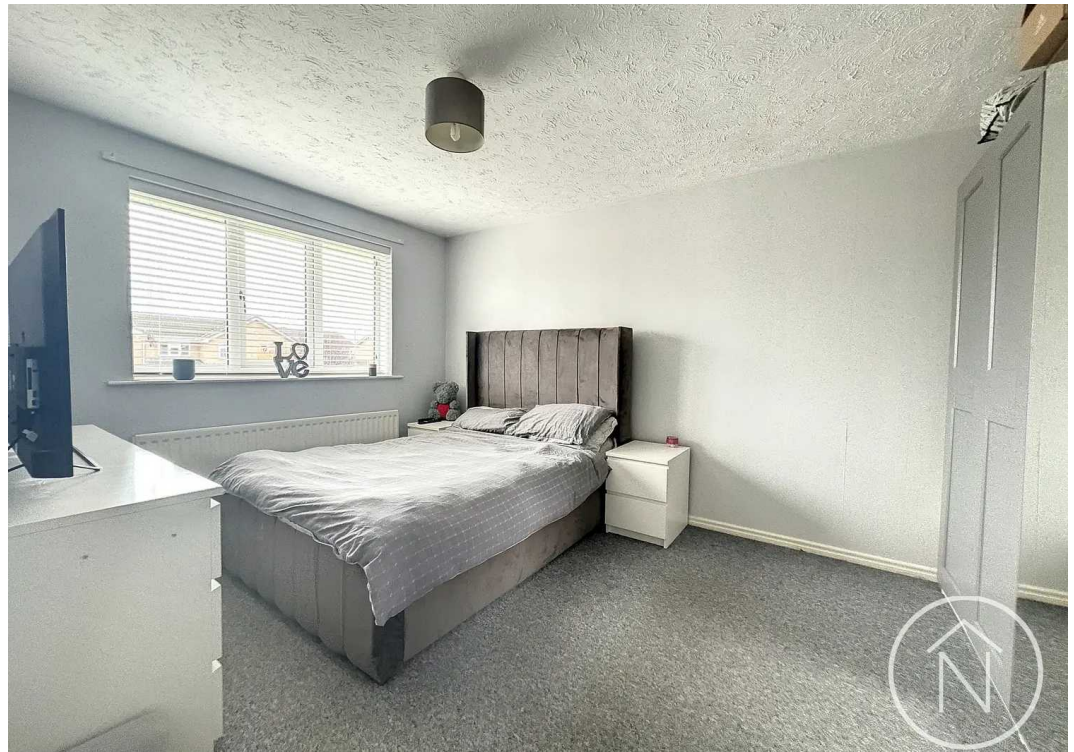
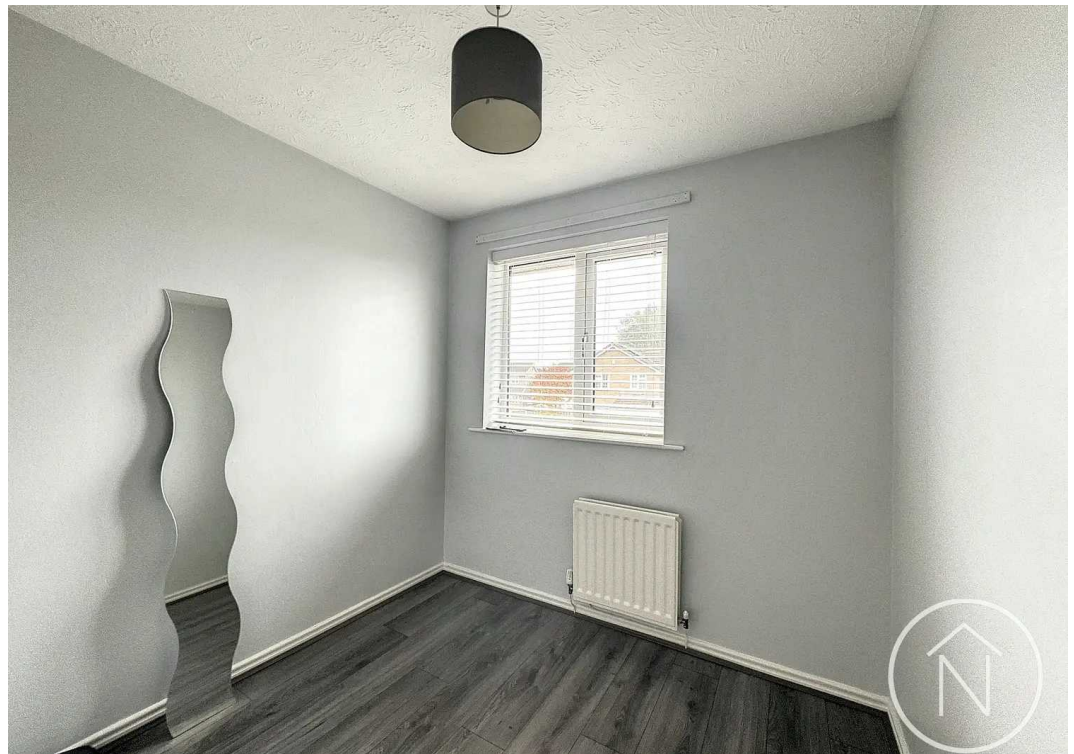
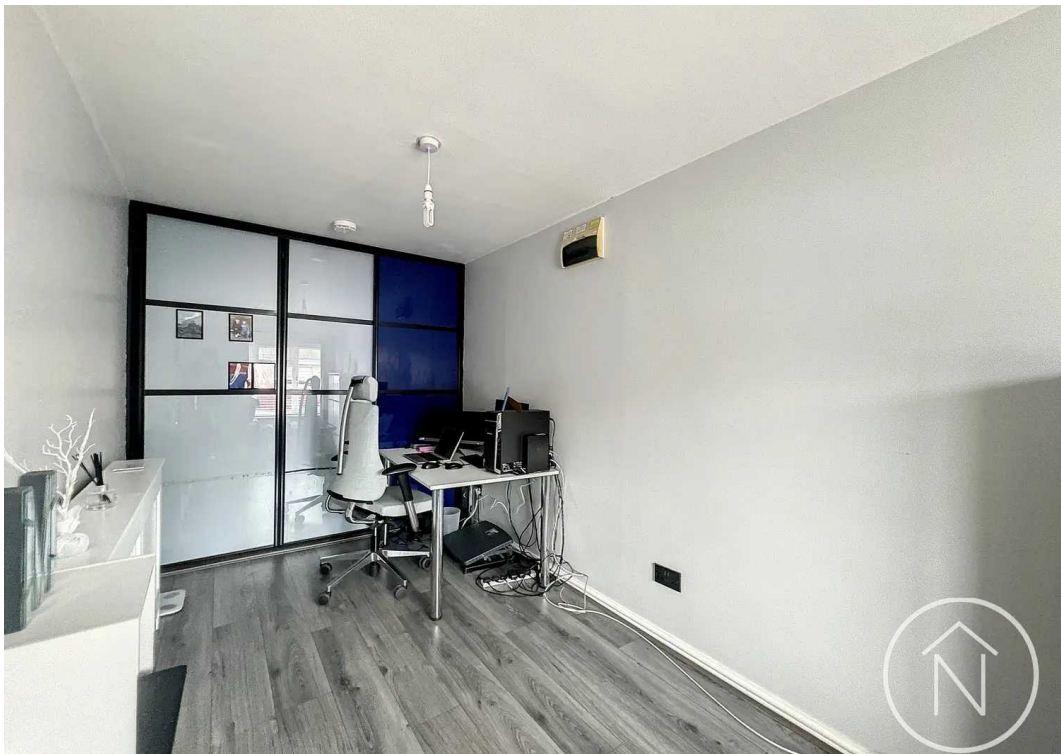
Bedroom Three

8' 8" x 7' 8" (2.63m x 2.34m)



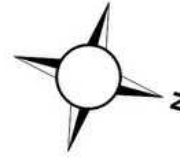
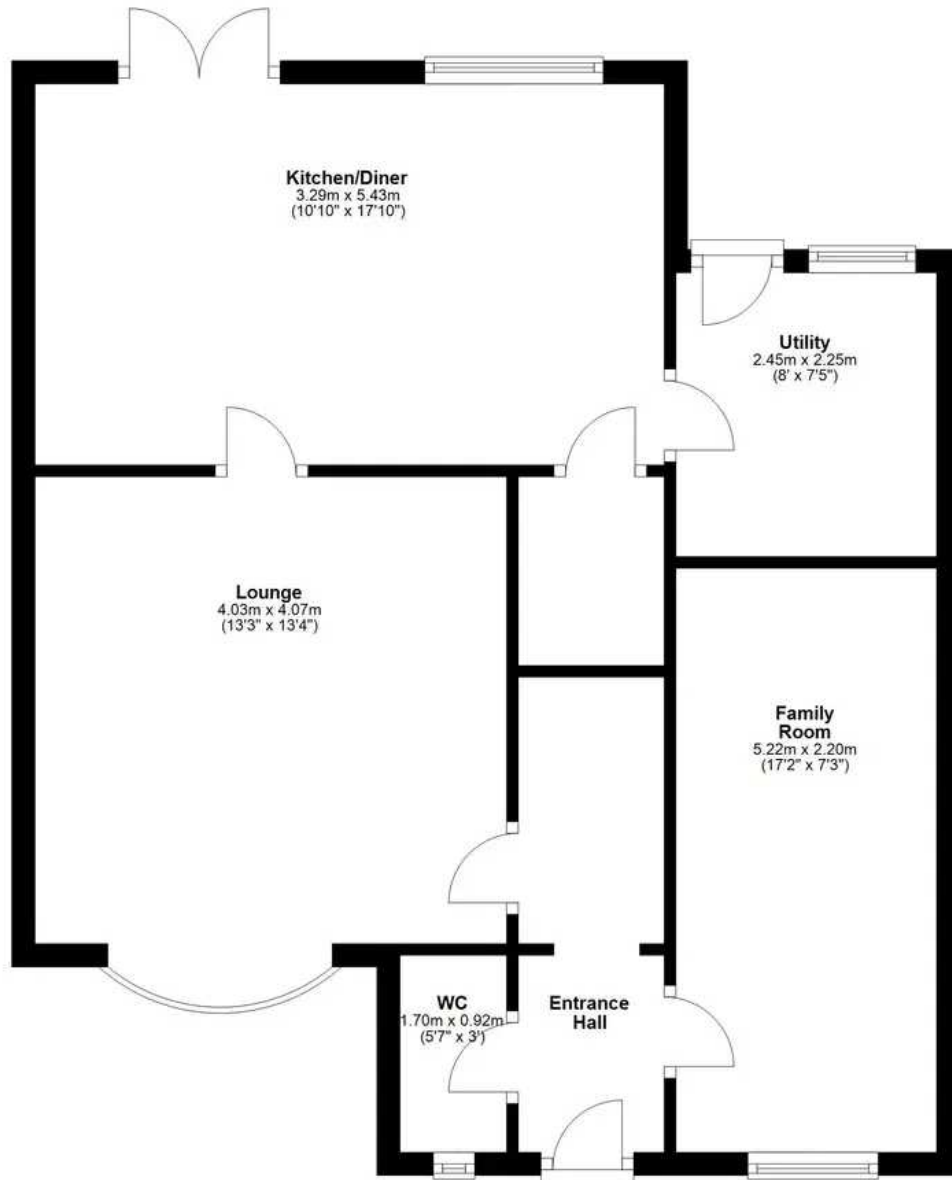






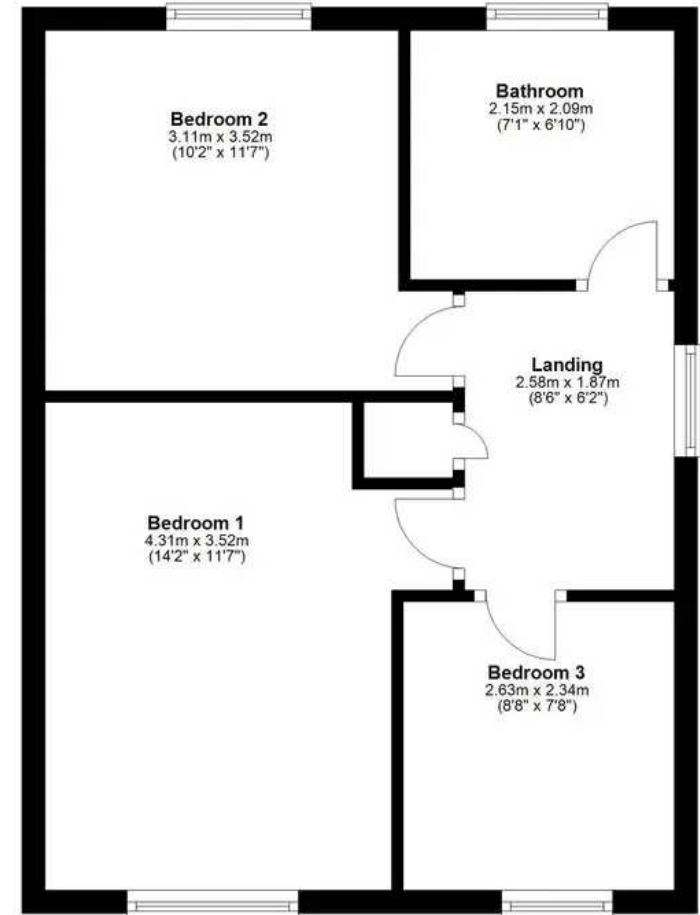
Ground Floor

Approx. 62.8 sq. metres (676.0 sq. feet)



First Floor

Approx. 41.3 sq. metres (445.0 sq. feet)



Total area: approx. 104.1 sq. metres (1121.0 sq. feet)

floor plan(s) by Northgate[®] for illustration purpose only all measurements are approximate.
Plan produced using PlanUp.



Northgate - Teesside

8 Town Square, Billingham - TS23 2LY

01642 813222 • billingham@northgates.net • www.northgates.co.uk/

