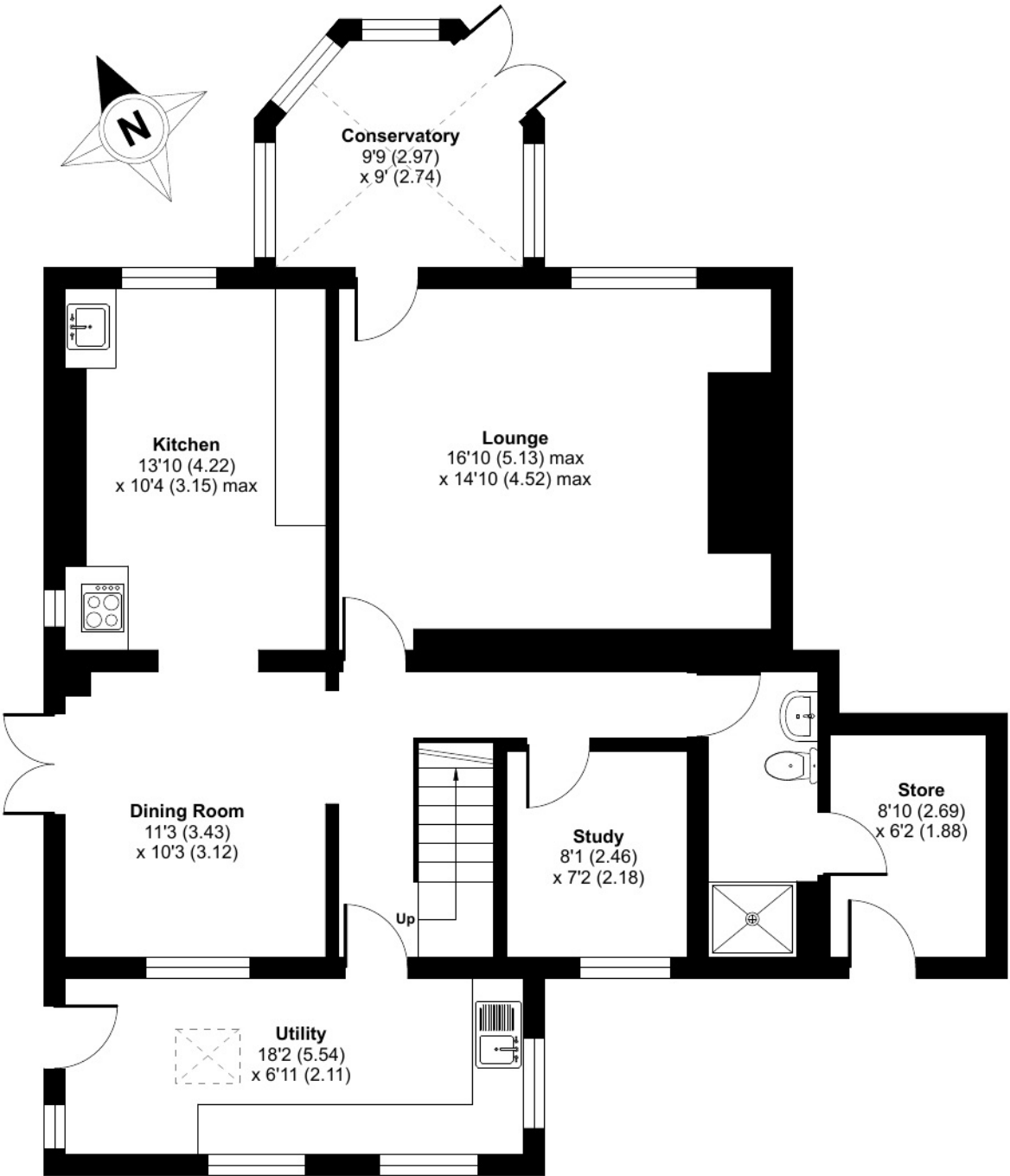


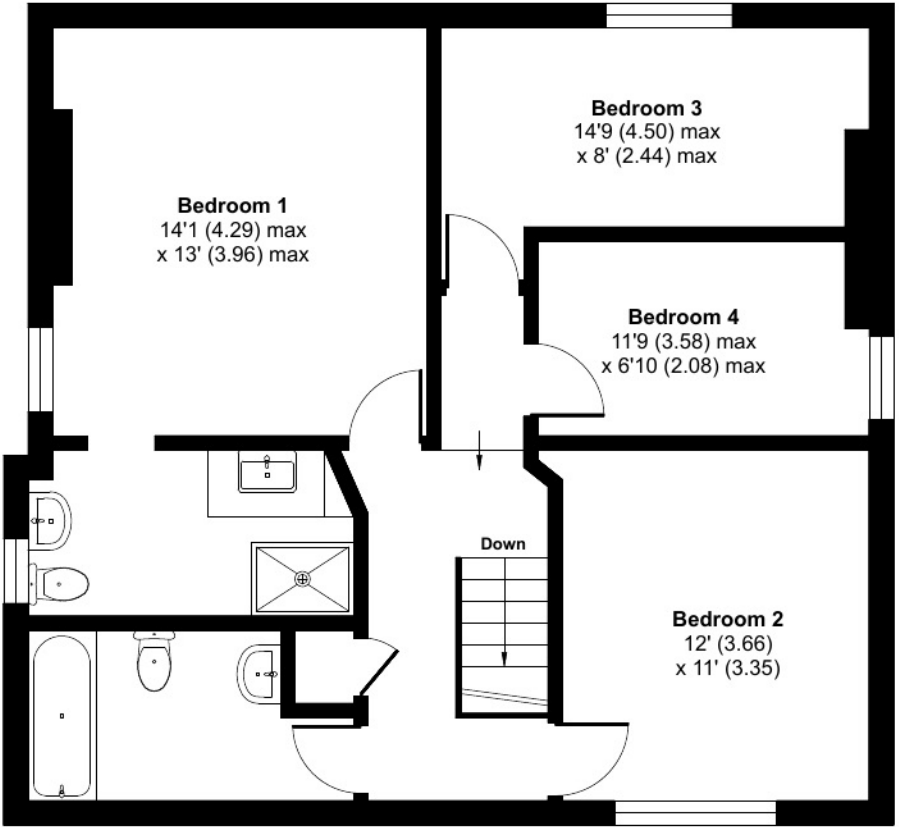
# Maudlin, Bodmin, PL30 5AH

Approximate Area = 1789 sq ft / 166.1 sq m

For identification only - Not to scale



**GROUND FLOOR**



**FIRST FLOOR**

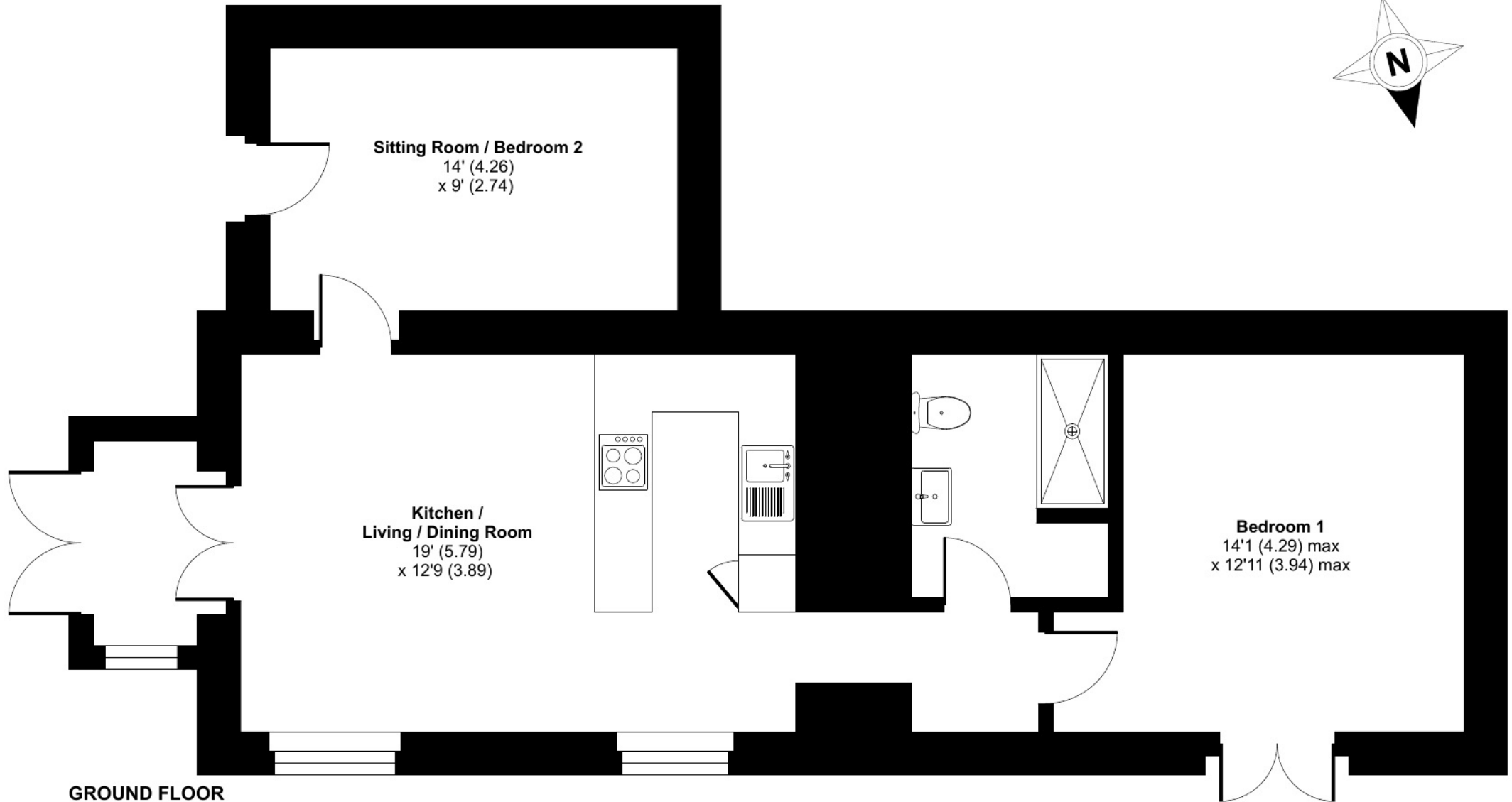


Floor plan produced in accordance with RICS Property Measurement Standards incorporating International Property Measurement Standards (IPMS2 Residential). © nichecom 2024. Produced for Rohrs and Rowe. REF: 1087669

# Annexe, Hazeldine, Maudlin, Bodmin, PL30 5AH

Approximate Area = 721 sq ft / 66.9 sq m

For identification only - Not to scale



Floor plan produced in accordance with RICS Property Measurement Standards incorporating International Property Measurement Standards (IPMS2 Residential). © nichecom 2024. Produced for Rohrs and Rowe. REF: 1089654