



A Signature Collection in the
heart of Woodberry Down

EDITIONS

HAWKER HOUSE

Berkeley
Designed for life

FLOORPLAN LEVEL 01

EDITIONS COLLECTION

HAWKER HOUSE



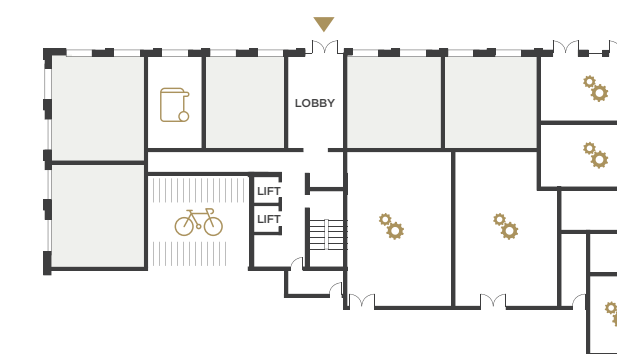
Level 01



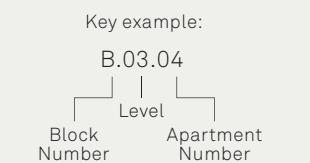
SOUTH WEST ELEVATION



GROUND FLOOR



| APARTMENT | SQ M | SQ FT |
|---------------------------|---------------|----------------|
| APARTMENT B6.01.01 | 76.9 | 827 |
| Kitchen | 2.60m x 3.52m | 8'6" x 11'7" |
| Living / Dining | 4.61m x 4.38m | 15'2" x 14'5" |
| Main Bedroom | 5.00m x 2.80m | 16'5" x 9'2" |
| Bedroom 2 | 3.80m x 3.35m | 12'6" x 11'0" |
| Balcony | 7.5 sq m | 80.7 sq ft |
| APARTMENT B6.01.02 | 76.9 | 827 |
| Kitchen | 2.60m x 3.52m | 8'6" x 11'7" |
| Living / Dining | 4.61m x 4.38m | 15'2" x 14'5" |
| Main Bedroom | 5.00m x 2.80m | 16'5" x 9'2" |
| Bedroom 2 | 3.80m x 3.35m | 12'6" x 11'0" |
| Terrace | 18.8 sq m | 202.3 sq ft |
| APARTMENT B6.01.03 | 50.5 | 543 |
| Kitchen | 1.90m x 2.61m | 6'2" x 8'7" |
| Living / Dining | 5.31m x 3.61m | 17'5" x 11'10" |
| Bedroom | 4.15m x 3.46m | 13'7" x 11'4" |
| Terrace | 10.74 sq m | 115.6 sq ft |
| APARTMENT B6.01.04 | 51.5 | 554 |
| Kitchen | 2.00m x 2.61m | 6'7" x 8'7" |
| Living / Dining | 5.21m x 3.61m | 17'1" x 11'10" |
| Bedroom | 4.85m x 3.46m | 15'10" x 11'4" |
| Terrace | 9.8 sq m | 105.4 sq ft |
| APARTMENT B6.01.05 | 59.4 | 639 |
| Kitchen | 2.80m x 2.73m | 9'2" x 9'0" |
| Living / Dining | 4.04m x 5.21m | 13'3" x 17'1" |
| Bedroom | 4.37m x 3.80m | 14'4" x 12'6" |
| Terrace | 12.8 sq m | 137.7 sq ft |
| APARTMENT B6.01.06 | 59.4 | 639 |
| Kitchen | 2.80m x 2.73m | 9'2" x 9'0" |
| Living / Dining | 4.04m x 5.21m | 13'3" x 17'1" |
| Bedroom | 4.37m x 3.80m | 14'4" x 12'6" |
| Balcony | 5.2 sq m | 55.9 sq ft |
| APARTMENT B6.01.07 | 51.5 | 554 |
| Kitchen | 2.00m x 2.61m | 6'7" x 8'7" |
| Living / Dining | 5.21m x 3.61m | 17'1" x 11'10" |
| Bedroom | 4.85m x 3.46m | 15'10" x 11'4" |
| Balcony | 5.2 sq m | 55.9 sq ft |
| APARTMENT B6.01.08 | 51.5 | 554 |
| Kitchen | 2.00m x 2.61m | 6'7" x 8'7" |
| Living / Dining | 5.21m x 3.61m | 17'1" x 11'10" |
| Bedroom | 4.85m x 3.46m | 15'11" x 11'4" |
| Balcony | 5.2 sq m | 55.9 sq ft |
| APARTMENT B6.01.09 | 51.5 | 554 |
| Kitchen | 2.00m x 2.61m | 6'7" x 8'7" |
| Living / Dining | 5.21m x 3.61m | 17'1" x 11'10" |
| Bedroom | 4.85m x 3.46m | 15'11" x 11'4" |
| Balcony | 5.2 sq m | 55.9 sq ft |



- Socially rented
- ⚙️ Services / Plant room

▶ Measurement Points S Storage W Wardrobe PW Provision for Wardrobe U Utility ☑ High Units

Floorplans shown for Hawker House are for approximate measurements only. Exact layouts and sizes may vary. All measurements may vary within a tolerance of 5%. The dimensions are not intended to be used for carpet sizes, appliance sizes or items of furniture. Furniture layouts are indicative only. Kitchen layout indicative only. Please ask Sales Consultant for further information. All plans are subject to planning. Ground floor layout is subject to change.

Views over landscaped gardens

Views over landscaped gardens



FLOORPLAN LEVEL 02-06

EDITIONS COLLECTION

HAWKER HOUSE



Levels 02 - 06



Views over landscaped gardens

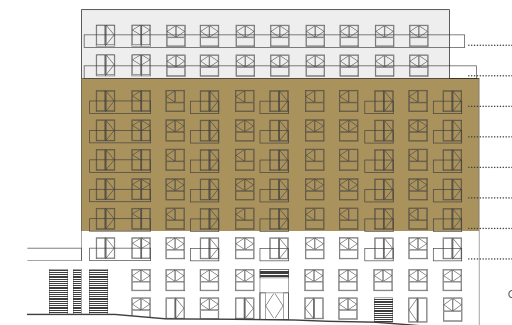
Views over landscaped gardens

▶ Measurement Points S Storage W Wardrobe PW Provision for Wardrobe U Utility High Units

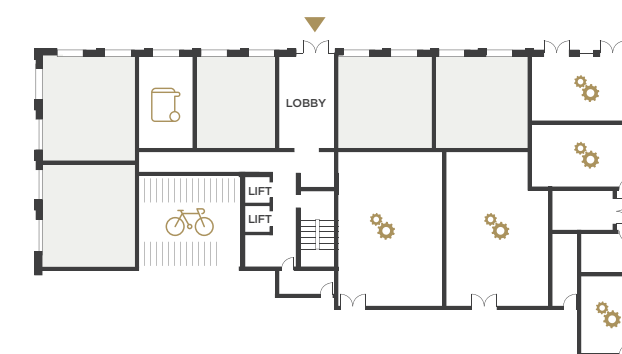
Floorplans shown for Hawker House are for approximate measurements only. Exact layouts and sizes may vary. All measurements may vary within a tolerance of 5%. The dimensions are not intended to be used for carpet sizes, appliance sizes or items of furniture. Furniture layouts are indicative only. Kitchen layout indicative only. Please ask Sales Consultant for further information. All plans are subject to planning. Ground floor layout is subject to change.



SOUTH WEST ELEVATION



GROUND FLOOR



□ Socially rented
⊗ Services / Plant room

| APARTMENT B6.02-06.01 | 76.9 SQ M | 827 SQ FT |
|-----------------------|-----------------|----------------|
| Kitchen | 2.60m x 3.52m | 8'6" x 11'7" |
| Living / Dining | 4.61m x 4.38m | 15'2" x 14'5" |
| Main Bedroom | 5.00m x 2.80m | 16'5" x 9'2" |
| Bedroom 2 | 3.80m x 3.35m | 12'6" x 11'0" |
| Balcony | 7.5 sq m | 80.7 sq ft |
| APARTMENT B6.02-06.02 | 76.9 SQ M | 827 SQ FT |
| Kitchen | 2.60m x 3.52m | 8'6" x 11'7" |
| Living / Dining | 4.61m x 4.38m | 15'2" x 14'5" |
| Main Bedroom | 5.00m x 2.80m | 16'5" x 9'2" |
| Bedroom 2 | 3.80m x 3.35m | 12'6" x 11'0" |
| Balcony | 9.3 sq m | 100.1 sq ft |
| APARTMENT B6.02-06.03 | 50.5 SQ M | 543 SQ FT |
| Kitchen | 1.90m x 2.61m | 6'3" x 8'7" |
| Living / Dining | 5.31m x 3.61m | 17'5" x 11'10" |
| Bedroom | 4.15 m x 3.46 m | 13'7" x 11'4" |
| Balcony | 5.2 sq m | 55.9 sq ft |
| APARTMENT B6.02-06.04 | 51.5 SQ M | 554 SQ FT |
| Kitchen | 2.00m x 2.61m | 6'7" x 8'7" |
| Living / Dining | 5.21m x 3.61m | 17'1" x 11'10" |
| Bedroom | 4.85 m x 3.46 m | 15'11" x 11'4" |
| Balcony | 5.2 sq m | 55.9 sq ft |
| APARTMENT B6.02-06.05 | 59.4 SQ M | 639 SQ FT |
| Kitchen | 2.80m x 2.73m | 9'2" x 9'0" |
| Living / Dining | 4.04 m x 5.21 m | 13'3" x 17'1" |
| Bedroom | 4.37m x 3.80m | 14'4" x 12'6" |
| Balcony | 5.2 sq m | 55.9 sq ft |
| APARTMENT B6.02-06.06 | 59.4 SQ M | 639 SQ FT |
| Kitchen | 2.80m x 2.73m | 9'2" x 9'0" |
| Living / Dining | 4.04 m x 5.21 m | 13'3" x 17'1" |
| Bedroom | 4.37m x 3.80m | 14'4" x 12'6" |
| Balcony | 5.2 sq m | 55.9 sq ft |
| APARTMENT B6.02-06.07 | 51.5 SQ M | 554 SQ FT |
| Kitchen | 2.00m x 2.61m | 6'7" x 8'7" |
| Living / Dining | 5.21m x 3.61m | 17'1" x 11'10" |
| Bedroom | 4.85 m x 3.46 m | 15'11" x 11'4" |
| Balcony | 5.2 sq m | 55.9 sq ft |
| APARTMENT B6.02-06.08 | 51.5 SQ M | 554 SQ FT |
| Kitchen | 2.00m x 2.61m | 6'7" x 8'7" |
| Living / Dining | 5.21m x 3.61m | 17'1" x 11'10" |
| Bedroom | 4.85 m x 3.46 m | 15'11" x 11'4" |
| Balcony | 5.2 sq m | 55.9 sq ft |
| APARTMENT B6.02-06.09 | 51.5 SQ M | 554 SQ FT |
| Kitchen | 2.00m x 2.61m | 6'7" x 8'7" |
| Living / Dining | 5.21m x 3.61m | 17'1" x 11'10" |
| Bedroom | 4.85 m x 3.46 m | 15'11" x 11'4" |
| Balcony | 5.2 sq m | 55.9 sq ft |

Key example:
B.03.04
Block Number Level Apartment Number

FLOORPLAN LEVEL 07

EDITIONS COLLECTION

HAWKER HOUSE



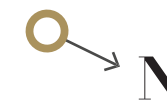
Level 07



Views over landscaped gardens



Views over landscaped gardens



◀▶ Measurement Points S Storage W Wardrobe PW Provision for Wardrobe U Utility High Units

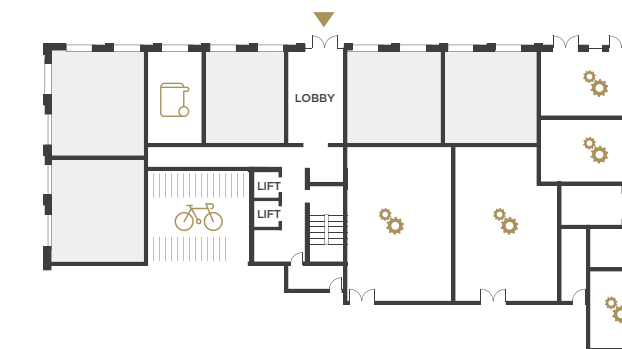
Floorplans shown for Hawker House are for approximate measurements only. Exact layouts and sizes may vary. All measurements may vary within a tolerance of 5%. The dimensions are not intended to be used for carpet sizes, appliance sizes or items of furniture. Furniture layouts are indicative only. Kitchen layout indicative only. Please ask Sales Consultant for further information. All plans are subject to planning. Ground floor layout is subject to change.



SOUTH WEST ELEVATION



GROUND FLOOR



□ Socially rented
⊗ Services / Plant room

| APARTMENT B6.07.01 | 72.9 SQ M | 784 SQ FT |
|--------------------|---------------|------------------|
| Kitchen | 2.82m x 3.25m | 9' 3" x 10' 8" |
| Living / Dining | 5.07m x 3.66m | 16' 8" x 12' 0" |
| Main Bedroom | 3.40m x 2.86m | 11' 2" x 9' 5" |
| Bedroom 2 | 3.80m x 2.86m | 12' 6" x 9' 5" |
| Terrace | 24.5 sq m | 263.7 sq ft |
| APARTMENT B6.07.02 | 86.9 SQ M | 935 SQ FT |
| Kitchen | 2.21m x 3.17m | 7' 3" x 10' 5" |
| Living / Dining | 6.80m x 3.48m | 22' 4" x 11' 5" |
| Main Bedroom | 4.50m x 3.55m | 14' 9" x 11' 7" |
| Bedroom 2 | 3.50m x 4.60m | 11' 6" x 15' 1" |
| Balcony | 9.42 sq m | 101.3 sq ft |
| APARTMENT B6.07.03 | 50.5 SQ M | 543 SQ FT |
| Kitchen | 1.90m x 2.61m | 6' 3" x 8' 7" |
| Living / Dining | 5.31m x 3.61m | 17' 5" x 11' 0" |
| Bedroom | 4.15m x 3.46m | 13' 7" x 11' 4" |
| Balcony | 5.2 sq m | 55.9 sq ft |
| APARTMENT B6.07.04 | 51.5 SQ M | 554 SQ FT |
| Kitchen | 2.00m x 2.61m | 6' 7" x 8' 7" |
| Living / Dining | 5.21m x 3.61m | 17' 1" x 11' 10" |
| Bedroom | 4.85m x 3.46m | 15' 11" x 11' 4" |
| Balcony | 5.2 sq m | 55.9 sq ft |
| APARTMENT B6.07.05 | 106.2 SQ M | 1143 SQ FT |
| Kitchen / Dining | 3.20m x 4.79m | 10' 6" x 15' 4" |
| Living | 3.76m x 4.79m | 12' 4" x 15' 4" |
| Main Bedroom | 3.75m x 4.60m | 12' 4" x 15' 1" |
| Bedroom 2 | 3.75m x 2.86m | 12' 3" x 9' 4" |
| Bedroom 3 | 3.72m x 2.87m | 12' 4" x 9' 5" |
| Terrace | 64.6 sq m | 695.3 sq ft |
| APARTMENT B6.07.06 | 55.1 SQ M | 593 SQ FT |
| Kitchen | 1.91m x 3.18m | 6' 3" x 10' 5" |
| Living / Dining | 3.16m x 6.18m | 10' 5" x 20' 4" |
| Bedroom | 2.86m x 4.61m | 9' 5" x 15' 2" |
| Terrace | 18.1 sq m | 194.8 sq ft |

Key example:
B.03.04
Block Number Level Apartment Number

FLOORPLAN LEVEL 08

EDITIONS COLLECTION

HAWKER HOUSE



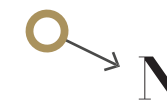
Level 08



Views over landscaped gardens



Views over landscaped gardens



▶ Measurement Points S Storage W Wardrobe PW Provision for Wardrobe U Utility High Units

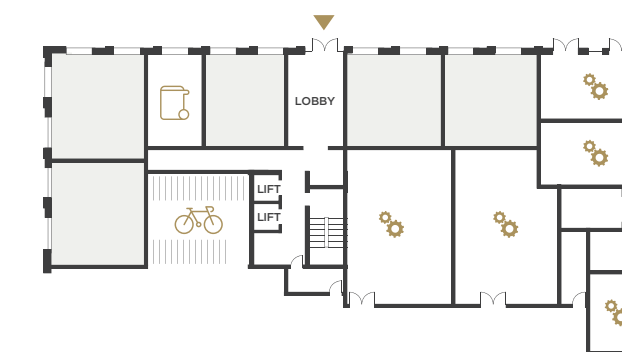
Floorplans shown for Hawker House are for approximate measurements only. Exact layouts and sizes may vary. All measurements may vary within a tolerance of 5%. The dimensions are not intended to be used for carpet sizes, appliance sizes or items of furniture. Furniture layouts are indicative only. Kitchen layout indicative only. Please ask Sales Consultant for further information. All plans are subject to planning. Ground floor layout is subject to change.



SOUTH WEST ELEVATION



GROUND FLOOR



□ Socially rented
 ⚙ Services / Plant room

| APARTMENT B6.08.01 | 72.9 SQ M | 784 SQ FT |
|--------------------|---------------|------------------|
| Kitchen | 2.82m x 3.25m | 9' 3" x 10' 8" |
| Living / Dining | 5.07m x 3.66m | 16' 8" x 12' 0" |
| Main Bedroom | 3.40m x 2.86m | 11' 2" x 9' 5" |
| Bedroom 2 | 3.80m x 2.86m | 12' 6" x 9' 5" |
| Balcony | 7.85 sq m | 84.4 sq ft |
| APARTMENT B6.08.02 | 86.9 SQ M | 935 SQ FT |
| Kitchen | 2.21m x 3.17m | 7' 3" x 10' 5" |
| Living / Dining | 6.80m x 3.48m | 22' 4" x 11' 5" |
| Main Bedroom | 4.50m x 3.55m | 14' 9" x 11' 7" |
| Bedroom 2 | 3.50m x 4.60m | 11' 6" x 15' 1" |
| Balcony | 9.42 sq m | 101.3 sq ft |
| APARTMENT B6.08.03 | 50.5 SQ M | 543 SQ FT |
| Kitchen | 1.90m x 2.61m | 6' 2" x 8' 7" |
| Living / Dining | 5.21m x 3.61m | 17' 1" x 11' 0" |
| Bedroom | 4.15m x 3.46m | 13' 7" x 11' 4" |
| Balcony | 5.2 sq m | 55.9 sq ft |
| APARTMENT B6.08.04 | 51.5 SQ M | 554 SQ FT |
| Kitchen | 2.00m x 2.61m | 6' 7" x 8' 7" |
| Living / Dining | 5.21m x 3.61m | 17' 1" x 11' 10" |
| Bedroom | 4.85m x 3.46m | 15' 10" x 11' 4" |
| Balcony | 5.2 sq m | 55.9 sq ft |
| APARTMENT B6.08.05 | 106.2 SQ M | 1143 SQ FT |
| Kitchen / Dining | 3.20m x 4.79m | 10' 6" x 15' 8" |
| Living | 3.76m x 4.79m | 12' 4" x 15' 8" |
| Main Bedroom | 3.75m x 4.60m | 12' 3" x 15' 1" |
| Bedroom 2 | 3.75m x 2.86m | 12' 3" x 9' 4" |
| Bedroom 3 | 3.72m x 2.87m | 12' 4" x 9' 5" |
| Balcony | 11.5 sq m | 124.1 sq ft |
| APARTMENT B6.08.06 | 55.1 SQ M | 593 SQ FT |
| Kitchen | 1.91m x 3.18m | 6' 3" x 10' 5" |
| Living / Dining | 3.16m x 6.18m | 10' 5" x 20' 4" |
| Bedroom | 2.86m x 4.61m | 9' 5" x 15' 2" |
| Balcony | 5.2 sq m | 55.9 sq ft |

Key example:
 B.03.04
 Block Number Level Apartment Number