

KINGS CROSS LONDON

**ONYX**

APARTMENTS

LIFESTYLE

# ONYX APARTMENTS

Location. Living. Lifestyle.  
Look No Further.

117 beautiful boutique 1, 2 and 3 bedroom apartments situated in the heart of the new cultural hub of London – historic Kings Cross – a vibrant and bustling community connected to Central London, the U.K. and Europe.

**102 Camley Street**  
Kings Cross, London, N1C 4PF



**Key**

- ▼ Shopping
- Places of Interest
- ★ Theatres
- ◆ Famous Buildings & Monuments
- Universities
- ⊖ Tube Station
- ≡ Train Station
- ⊕ Eurostar
- XXX Parks / Green Spaces
- //// Canals / The Thames
- Main Road / Road

**X** Marks The Spot

For Modern Luxury Living

Camden Market  
Camden Town  
Royal Veterinary College  
Camden Road  
Essex Road  
Granary Square  
Camley Street Natural Park  
Central Saint Martins

St Pancras International  
Kings Cross  
Angel

The British Library

Sadler's Wells Theatre

City University

Wellcome Collection  
UCL Eastman Dental Institute  
UCL School of Pharmacy

Regent's Park  
Euston Square  
Warren Street  
University College London

Birkbeck College

Russell Square

Madame Tussauds  
University of Westminster

Goodge Street

The British Museum

Farringdon

Barbican

Moorgate

Liverpool Street

Dominion Theatre

Chancery Lane

Museum of London

Selfridges  
Oxford St.

Tottenham Court Road

Royal Opera House

London School of Economics & Political Science

St Paul's

St Paul's Cathedral

Bank

The Gherkin

London Fenchurch Street

Bond Street

London Palladium

The Phoenix

Covent Garden

Covent Garden Market

Temple

City Thameslink

Mansion House

London Cannon Street

Monument

Tower Hill

Green Park

Piccadilly Circus

Nelson's Column

Charing Cross

Embankment

The National Theatre

Tate Modern

Shakespeare's Globe



# ONYX APARTMENTS







Granary Square

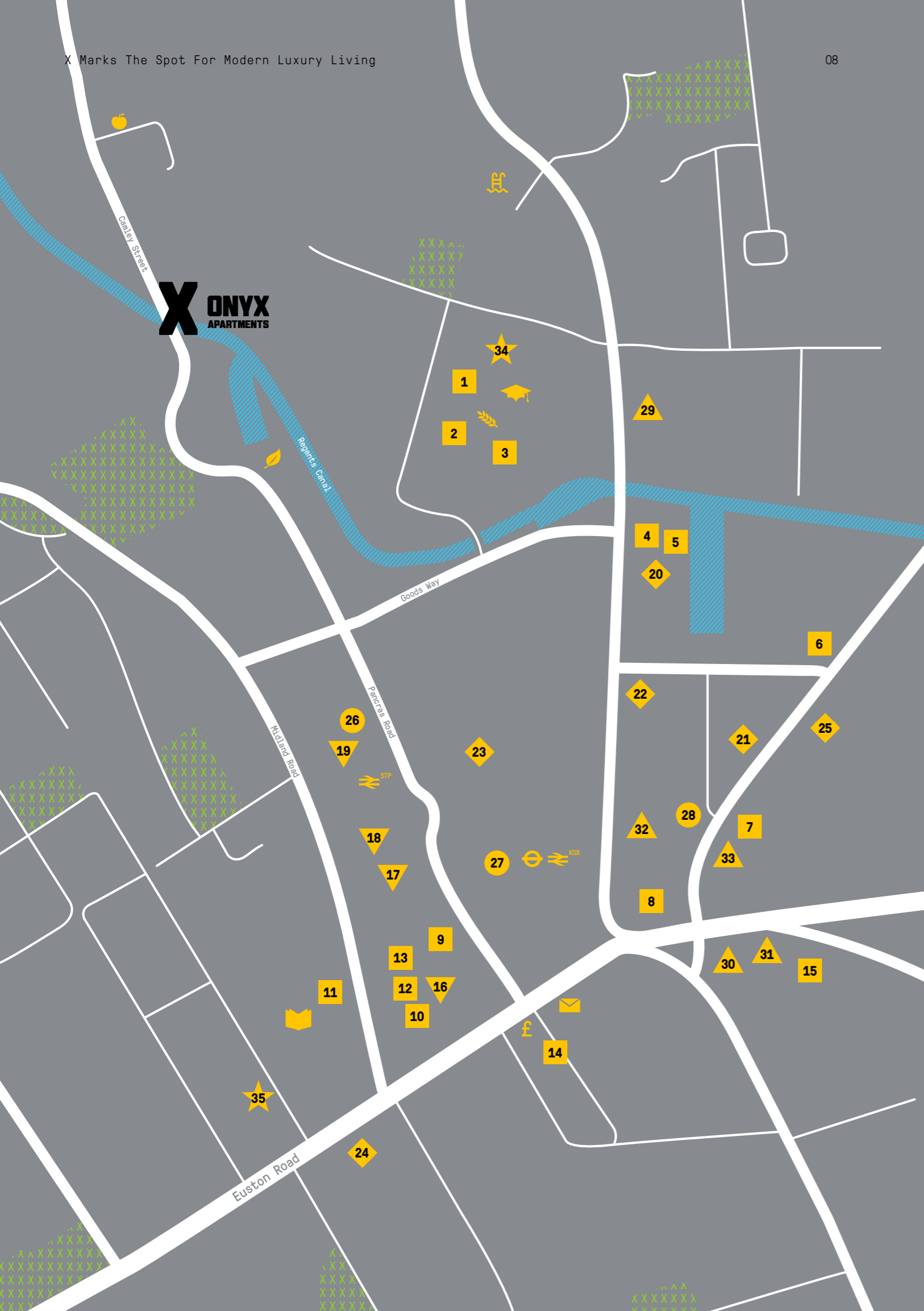
# AN EXCITING OPPORTUNITY

Onyx Apartments are conscientiously designed for modern, elegant, professional living. The building is an architectural achievement displaying a stunning exterior of harmoniously balanced brick and glass, positioned on the banks of the Regent's Canal, Kings Cross, London.

Every one of the 117 beautiful 1, 2 and 3 bedroom apartments have been carefully crafted, with exceptional attention to detail to every fitting and fixture for an optimum living experience.

Perfectly situated, Onyx Apartments are in one of the most well connected areas in London, with Kings Cross and St Pancras International Stations within close proximity. They also sit within the boundaries of the new N1C postcode and the wider regeneration area of Kings Cross which incorporates enticing public and green spaces, restored heritage buildings, improved education opportunities, residential and retail developments, galleries, bars and shops in the immediate neighbourhood. This pocket of London is fast evolving into a highly desirable area for living and investment.
















# A LOCAL EXPERIENCE

Onyx Apartments sits within easy reach of a historic, creative and commercial community. A quick stroll from your apartment is the neighbouring stylish and rejuvenated Granary Square. The classic Victorian industrial landscape has been retained, with the area's roots still evident in the characterful listed buildings lining the square. The Granary Building was originally constructed as part of a former goods yard, storing wheat for London's bakers. It is now host to an array of restaurants and cafés with alfresco European style dining, as well as being home to the esteemed Central Saint Martins College.

A walk or short tube ride from your front door you have the luxury of being able to visit nearby cultural London gems such as The British Museum, The Museum of London and the prestigious British Library which holds over 14 million books.

Take a few hours out of your busy schedule to row a boat leisurely around the lake at Regent's Park, pay a visit to the majestic tigers and hippos at London Zoo, wander round the streets of the eclectic Camden Town, or picnic on the top of Primrose Hill for incredible views over the city. Revel in a spot of retail therapy with a meander down the famous Oxford and Regent streets and finish the night off in a theatrical manner enjoying a play amid the neon lights of the West End.

-  Camley Street Natural Park
-  Central Saint Martins
-  Granary Square
-  St Pancras International
-  Kings Cross Underground
-  Kings Cross Station
-  The British Library
-  Bank
-  Post Office
-  Alara Wholefoods
-  Kings Cross Pond Club

- Restaurants**
- 1 KERB at Cubitt Square
- 2 Dishoom
- 3 Caravan Kings Cross
- 4 Rotunda
- 5 Kings Place
- 6 The Driver
- 7 Addis Restaurant
- 8 Camino
- 9 The Booking Office
- 10 The Gilbert Scott
- 11 Peyton & Byrne
- 12 Fortnum & Mason
- 13 Searcys
- 14 Karpo
- 15 St. Chad's Place

- Shopping**
- 16 Jo Malone London
- 17 Hamleys
- 18 Cath Kidston
- 19 Links of London
- Cafés**
- 20 Green & Fortune Café
- 21 Café Oz
- 22 Pret a Manger
- 23 Notes
- 24 Starbucks
- 25 Pattern Coffee

- Supermarkets**
- 26 Marks & Spencer
- 27 Waitrose
- 28 Tesco Metro

- Pubs/Bars**
- 29 The Star of Kings
- 30 Scala
- 31 The Big Chill House
- 32 The Fellow
- 33 Simmons Bar

- Theatres**
- 34 Platform Theatre
- 35 The Shaw Theatre





**1 hour 32 minutes** to Birmingham†

**32 minutes** to Luton Airport<sup>STP</sup>

**17 minutes** to King's College London

**11 minutes** to Hyde Park

**8 minutes** to Liverpool Street

**6 minutes** to Leicester Square

**5 minutes** to Camden

**2 minutes** to Angel

**2 hours 16 minutes** to Paris (Eurostar)

**44 minutes** to Heathrow Airport†

**19 minutes** to Shoreditch High Street

**11 minutes** to Hampstead Heath

**9 minutes** to London Bridge

**7 minutes** to Bank (The City)

**4 minutes** to London Metropolitan University

**2 minutes** to University College London

# ONYX

**4 minutes** to Oxford Street

**6 minutes** to Buckingham Palace

**7 minutes** to Central Saint Martins\*

**10 minutes** to Regent's Park

**12 minutes** to Harrods

**22 minutes** to Canary Wharf

**50 minutes** to Stansted Airport†

**2 hours 18 minutes** to Manchester†

**3 minutes** to The British Museum

**6 minutes** to Green Park

**7 minutes** to Primrose Hill

**11 minutes** to The British Library\*

**12 minutes** to Knightsbridge

**32 minutes** to City Airport

**50 minutes** to Gatwick Airport†

**4 hours 20 minutes** to Edinburgh†

All travel times from Kings Cross underground to nearest landmark station unless otherwise stated  
\*Walking only from 102 Camley Street (Google Maps) †Includes travel on National Rail  
<sup>STP</sup> Travel from St Pancras International Source: TFL Journey Planner (unless stated)



# LONDON LINKS

Onyx Apartments benefit from their prime location for optimal connectivity to the rest of the city and beyond. Kings Cross provides:

- X Links to 6 major London Underground lines
- X The newly introduced 24hr tube services (selected lines)
- X HS1 and proposed HS2 and Cross Rail lines, which will provide increased travel connectivity throughout London and the rest of the United Kingdom
- X Plans to create a huge cycle hub for those choosing a more sustainable lifestyle

With the spirited and colourful atmosphere of Granary Square within walking distance, and the bustling pavements of Oxford Street only two stops away on the Victoria line, you have a multitude of the capital's greatest activities and landmarks within easy reach.

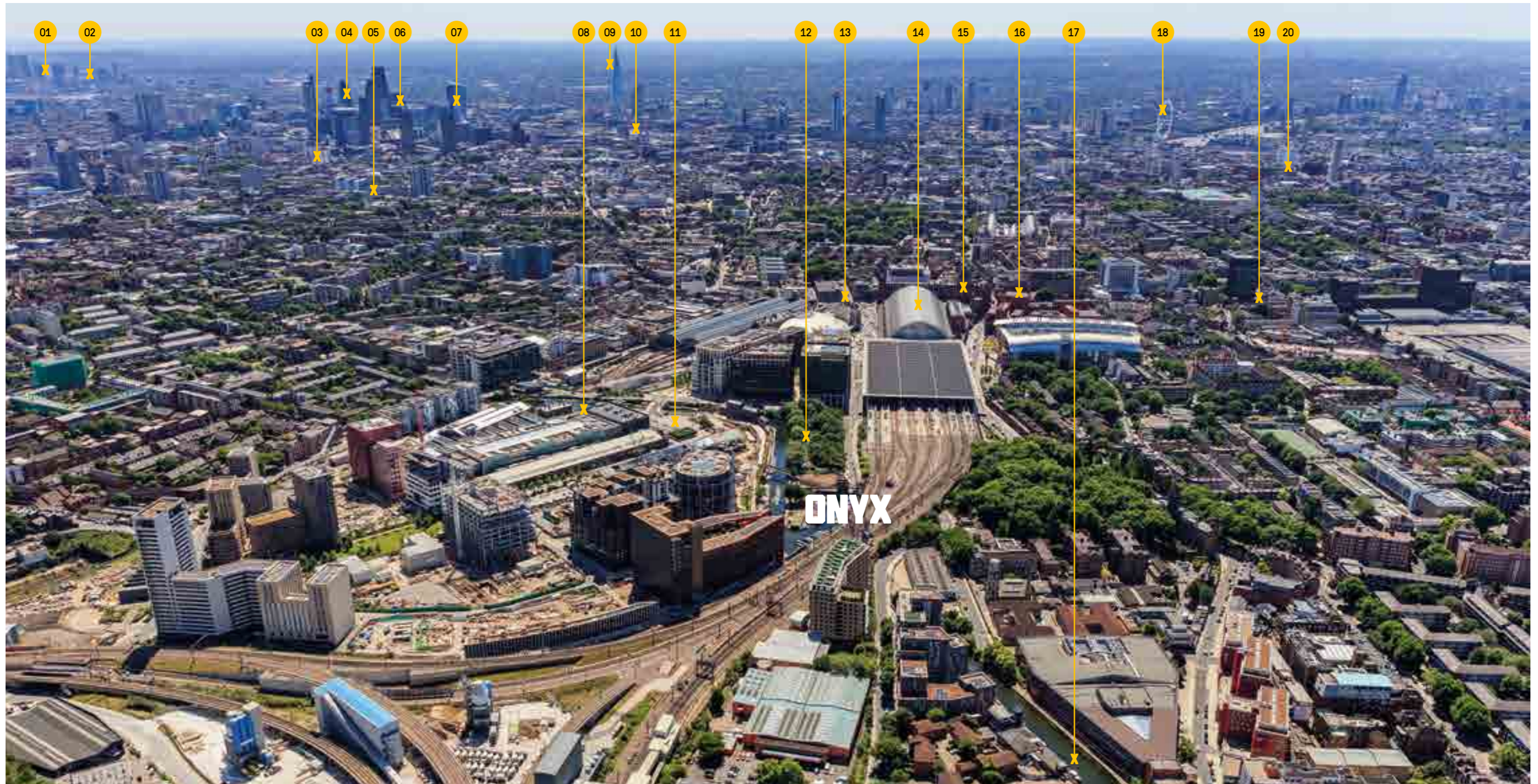
Northern Line	Victoria Line	Piccadilly Line	Circle & Metropolitan Lines	Hammersmith & City Line	Eurostar
5 minutes Camden Town	5 minutes Finsbury Park	4 minutes Holloway Road	3 minutes Great Portland Street	3 minutes Great Portland Street	
1 minute Euston	2 minutes Highbury & Islington	2 minutes Caledonian Road	2 minutes Euston Square	2 minutes Euston Square	
<b>Kings Cross Onyx Apartments</b>	<b>Kings Cross Onyx Apartments</b>	<b>Kings Cross Onyx Apartments</b>	<b>Kings Cross Onyx Apartments</b>	<b>Kings Cross Onyx Apartments</b>	<b>Kings Cross Onyx Apartments</b>
2 minutes Angel	3 minutes Warren Street	1 minute Russell Square	3 minutes Farringdon	3 minutes Farringdon	55 minutes Calais
4 minutes Old Street	4 minutes Oxford Street	3 minutes Holborn	5 minutes Barbican	5 minutes Barbican	1 hour 22 minutes Lille
5 minutes Moorgate	6 minutes Green Park	5 minutes Covent Garden	6 minutes Moorgate	6 minutes Moorgate	2 hours 1 minute Brussels
7 minutes Bank	8 minutes Victoria	6 minutes Leicester Square	8 minutes Liverpool Street	8 minutes Liverpool Street	2 hours 16 minutes Paris
9 minutes London Bridge	10 minutes Pimlico	7 minutes Piccadilly Circus	11 minutes Aldgate	12 minutes Aldgate East	

Source: TFL Journey Planner



St Pancras Renaissance Hotel





- 01 The O2 Arena
- 02 Canary Wharf
- 03 Tech City (Old Street)
- 04 The Gherkin
- 05 Shoreditch
- 06 The City
- 07 The 'Walkie Talkie' Building
- 08 Central Saint Martins
- 09 The Shard
- 10 St Paul's Cathedral
- 11 Granary Square
- 12 Camley Street Natural Park
- 13 Kings Cross Station
- 14 St Pancras International
- 15 The Renaissance Hotel
- 16 The British Library
- 17 Regent's Canal
- 18 The London Eye
- 19 Euston
- 20 Waterloo Station

The Onyx Apartments couldn't be better located, with Kings Cross Station and St Pancras International virtually on your doorstep. Travelling by train, tube, bus, bike or on foot, it couldn't be easier to get around on a local, national and international level.

Nationally, the close proximity of Kings Cross, St Pancras and Euston Stations give you easy access to cities such as Birmingham, Manchester, Edinburgh and other major UK cities for both business and leisure.

Eurostar at St Pancras International offers the chance to take advantage of high-speed rail, meaning a business

meeting, day trip or weekend break in Central Europe is directly accessible. You could be wandering the enchanting streets of Paris or soaking up the history of Brussels in a little over two hours.

For air travel there are swift transit connections with all five of London's international airports, with Heathrow, Stansted, Gatwick, City and Luton airports all under an hour away.\*

\*Source: TFL Journey Planner









The British Library

# ONYX IS IN GOOD COMPANY

Onyx Apartments are in close proximity to a growing hub of exciting corporate activity. Appealing to a broad range of businesses, inspirational commercial neighbours range from newspaper The Guardian to fashion house Louis Vuitton and publishers Pan Macmillan. Additionally, technology titans Google are set to open their London headquarters here in 2018, recognising the progressive potential the area has to offer.

Over 3.4 million square feet of office space is available in the surrounding area, presenting

endless commercial opportunities for those who live in the area and beyond. Sitting on the best transportation network in the city, it has become a prime location for business.

Companies in the area include:

- X Google
- X The Guardian
- X Havas
- X Jamie Oliver
- X Louis Vuitton
- X Pan Macmillan



St Pancras International





Central Saint Martins

# MAXIMISE YOUR POTENTIAL

London's most esteemed universities and colleges for Medicine, Economics and a variety of other courses present exemplary educational opportunities in the vicinity:

- X Central Saint Martins
- X Royal Veterinary College
- X UCL School of Pharmacy
- X UCL Eastman Dental Institute
- X University College London
- X King's College London
- X Imperial College London
- X Birkbeck College
- X University of Westminster
- X City University London
- X Brunel University London
- X London Business School
- X London School of Economics  
& Political Science

The iconic Central Saint Martins; an integral part of The University of the Arts, is a new hub and educational home to thousands of creative students from all over the globe. From Stella McCartney to Alexander McQueen, the college has schooled and produced some of the UK's leading and most accomplished artists and designers.





Kings Cross Underground



Granary Square Water Fountains

## EXQUISITE TASTE

Shop, eat and socialise to your heart's content. Be entertained day and night – Kings Cross has it all.

Granary Square provides the perfect setting for indoor and outdoor activity, with frequent live music performances, festivals, pop-up events and even floating cinemas, creating a dynamic community feel on your doorstep.

Discover the local area and find shopping experiences where you would least expect it. St Pancras International and Kings Cross Station have an assortment of boutique and high-street

retailers including MAC, Jo Malone, Cath Kidston, John Lewis, The Harry Potter Shop and Hotel Chocolat. Further afield, but still in easy reach, you can enjoy a variety of impressive shops on Oxford Street and Regent Street, or indulge in the luxury of iconic British shopping at Liberty and Hamleys.

From busy bars, coffee shops and delicious delis to quality restaurants, there is a choice to suit all palates and pockets. Venture inside the Great Northern Hotel for a sophisticated culinary experience served up by Michelin starred chef Mark Sargeant.



# SPACE FOR A CITY DETOX

In Kings Cross it's as easy to be a part of city life as it is to escape it. With a major sustainable transformation of the urban landscape in the neighbourhood, there is an abundance of outdoor green space and parks with places to relax, reflect, exercise and play.

The charm of Regent's Canal is right on your doorstep. Take an afternoon stroll, run or cycle past the scores of traditional and colourful narrowboats, heritage buildings and iconic gas holder structures that line the water.

The nearby Camley Street Natural Park offers a wild inner city retreat, a tranquil haven in the form of a two-acre nature reserve. Viewpoint, a floating platform inspired by Scandinavian design on the edge of the park, gives a contrasting perspective of the natural surroundings.



Camley Street Natural Park



Camley Street Natural Park



Regent's Canal













# ELEGANT INTERIORS

Onyx Apartments offer the highest of quality, finish and specifications of materials. The kitchens and bathrooms are fitted using carefully sourced elements. Every surface of our apartments are furnished with made-to-measure materials that exude sophistication, including Oak Cirrus wooden flooring and Volcana Dust wall tiles.

Oak Smoke Silver kitchen doors and Patrass Eggshell tiles feature as elegant flourishes. Our team of experts have carefully handpicked complimenting materials to ensure Onyx Apartments are unique examples of refined living that encapsulates elegance in the heart of the city's cultural quarter.





Computer generated image for illustrative purposes only

Onyx Apartments feature the marriage of contemporary interior design and a palette of soft tonal colours to provide you with an elegant and refreshing living experience.

The spacious rooms are illuminated by an abundance of natural light with large floor to ceiling windows and sliding doors, offering some wonderful views of the breathtaking city skyline.



Computer generated image for illustrative purposes only



# WHAT TO EXPECT

## Kitchen

- X Individually designed kitchen with soft close drawers and doors
- X Wall units with integrated lighting below
- X Back painted glass splashback
- X Stone worktop
- X Under-mounted sink
- X Compartmentalised waste storage
- X Siemens induction hob
- X Siemens single oven with pyrolytic cleaning
- X Siemens microwave
- X Integrated dishwasher
- X Integrated fridge/freezer
- X Washer/dryer (located in utility cupboard where possible)

## Bathrooms and Ensuite

- X Enamelled steel bath in family bathroom; large walk-in shower in master en-suite
- X Glass shower screen
- X Overhead and hand-held shower
- X Temperature controlled mixer and 2-way control for en-suite shower and 3-way control for bath
- X White ceramic wall-mounted WC with soft close seat and dual flush
- X White ceramic wall-mounted basin
- X Wall mounted mirrored vanity unit with shaver socket and integrated feature lighting (bathroom only)
- X Basin mixer spout and controls
- X Heated towel rail
- X Ceramic tiles to walls and floor

## Joinery

- X Veneered front door
- X Veneered internal doors

## Wall and Floor Finishes

- X Designer door furniture
- X Painted skirting to match walls
- X Fitted wardrobe with sliding or swing doors to master bedroom
- X Hallways provided with fitted cupboards with timber veneered doors and internal lighting

## Windows and Balconies

- X Painted plasterboard walls and ceilings
- X Engineered timber flooring in kitchen/living/dining area and hallway
- X Carpet in bedrooms
- X Floor-to-ceiling double glazed windows with sliding/opening doors to balconies (where applicable)
- X Winter Gardens (where applicable)

## Mechanical Systems

- X Comfort cooling in all living rooms and bedrooms
- X Underfloor heating throughout
- X Ventilation system incorporating heat recovery
- X Ceiling mounted heat detectors and residential sprinklers within apartment

## Electrical and Lighting

- X 13-amp circuits throughout
- X Low energy, maintenance lighting scheme using LED, low voltage and fluorescent fittings
- X 5-amp lighting sockets for connecting table and floor lamps in reception room and master bedroom

## Access and Cycle Parking

- X The basement, accessible by passenger lift, will provide secure cycle parking

## AV, Telephone, Data

- X Media plate at all TV locations offering both coax and high speed data cabling for digital TV, SKY Q, DAB and FM radio, telephone and data services for media connectivity
- X Communal aerial

## Security

- X Video entry system to apartment
- X Electronic controlled access to basement and external door
- X 24 hour Concierge

X Marks The Spot  
For Modern Luxury Living

These details are intended to give a general indication of the proposed specification. The developer operates a policy of continuous product development and reserves the right to alter any part of the development specification at any time. Where brands are specified, the developer reserves the right to replace that brand with another of equal quality or better.





St Dunstan's Court

# TIMELESS COLLECTION

Taylor Wimpey Central London is part of Taylor Wimpey plc – one of the UK's largest residential developers and a FTSE 100 listed company.

We feel that being part of a recognised and respected company offers our customers stability and confidence in delivery, but at the same time our specialist Central London arm is dedicated to creating unique developments suited to the Central London market where attention to detail and a unique service is key.

We believe this combination enables us to offer

a personalised service to our varying range of customers all of whom have different requirements for where they want to call their own. We recognise everyone is different and seek to reflect this in our bespoke development portfolio and create unique buildings where attention to detail is paramount.

We recognise that sometimes it is not easy to choose your perfect home or investment, but we aim to provide a dedicated customer service throughout the process to help you make that choice. Our aim is that you are delighted that you chose Taylor Wimpey Central London.



CGI depicts The Music Box and is indicative only





CGI depicts Westminster Quarter and is indicative only

# QUALITY ASSURED

We know that buying a home is a significant financial and personal investment. We aim to make the whole process as simple and straightforward as possible.

The Taylor Wimpey Central London Customer Journey is a set of procedures designed to ensure all customers have the best possible experience, from reserving their home or investment right through to aftercare once the purchase is completed. We pride ourselves on providing our customers with a personalised professional service on all aspects of their purchase.

All our homes come with a two-year Taylor Wimpey Warranty and a 10-year Buildmark cover from the National House Building Council. We are a customer-focused business with a firm commitment to build homes of the highest quality.





Harry Potter: Platform 9 3/4

Taylor  
Wimpey  
Central London



WWW.ONYXAPARTMENTS.CO.UK

#### Disclaimers

Floor plans are intended to give a general indication of the proposed floor layout only and apartment layouts provide approximate measurements only. Dimensions are for guidance only and all measurements and areas may vary within a tolerance of 5%. Dimensions are not intended to be used for carpet sizes, appliance space or items of furniture. Total areas are provided as GIA under the RICS measuring practice.

Kitchen and bathroom layouts are indicative only and are subject to change. Furniture and landscaping is shown for illustrative purposes only. All images and dimensions are not intended to form part of any contract or warranty. All images used are for illustrative purposes only. Photographs of views are indicative only. Individual features such as windows, brick and other material colours may vary, as may heating and electrical layouts some apartments are fitted with tinted windows. Enquire for further details. The name Onyx Apartments is for marketing purposes and may not form part of the postal address.



# ONYX APARTMENTS

Location. Living. Lifestyle.  
Look No Further.

Taylor  
Wimpey  
Central London



[WWW.ONYXAPARTMENTS.CO.UK](http://WWW.ONYXAPARTMENTS.CO.UK)

117 beautiful boutique 1, 2 and 3 bedroom apartments situated in the heart of the new cultural hub of London – historic Kings Cross – a vibrant and bustling community connected to Central London, the U.K. and Europe.

**102 Camley Street**  
Kings Cross, London, N1C 4PF

#### Disclaimers

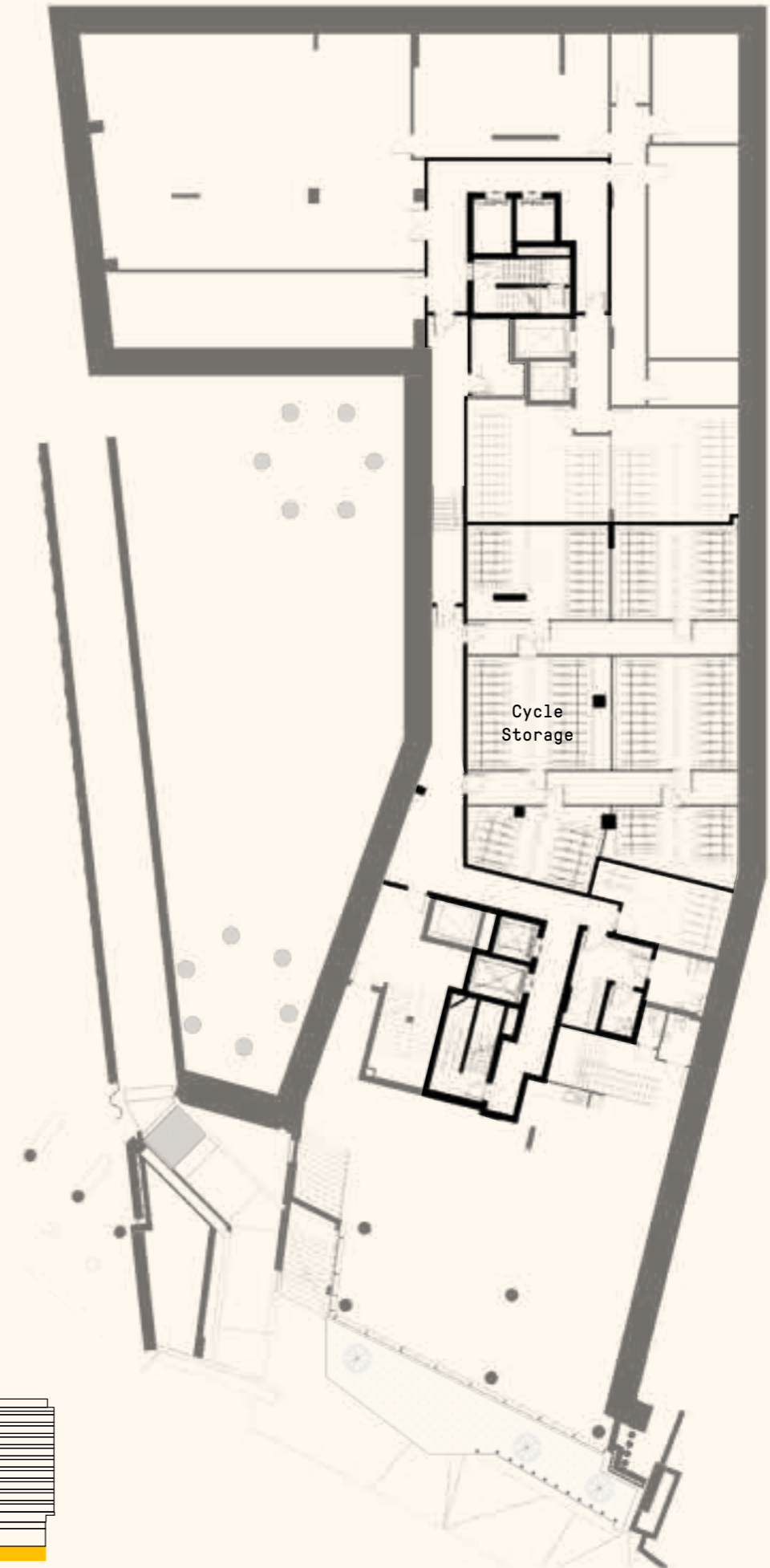
Floor plans are intended to give a general indication of the proposed floor layout only and apartment layouts provide approximate measurements only. Dimensions are for guidance only and all measurements and areas may vary within a tolerance of 5%. Dimensions are not intended to be used for carpet sizes, appliance space or items of furniture. Total areas are provided as GIA under the RICS measuring practice.

Kitchen and bathroom layouts are indicative only and are subject to change. Furniture and landscaping is shown for illustrative purposes only. All images and dimensions are not intended to form part of any contract or warranty. All images used are for illustrative purposes only. Photographs of views are indicative only. Individual features such as windows, brick and other material colours may vary, as may heating and electrical layouts some apartments are fitted with tinted windows. Enquire for further details. The name Onyx Apartments is for marketing purposes and may not form part of the postal address.



# LOWER GROUND

Whether your bike ride has taken you along the Regents Canal or through Granary Square, to work or paying a visit to see friends, as a resident at Onyx Apartments your bicycle can be kept in the secure cycle storage conveniently situated on the lower level.

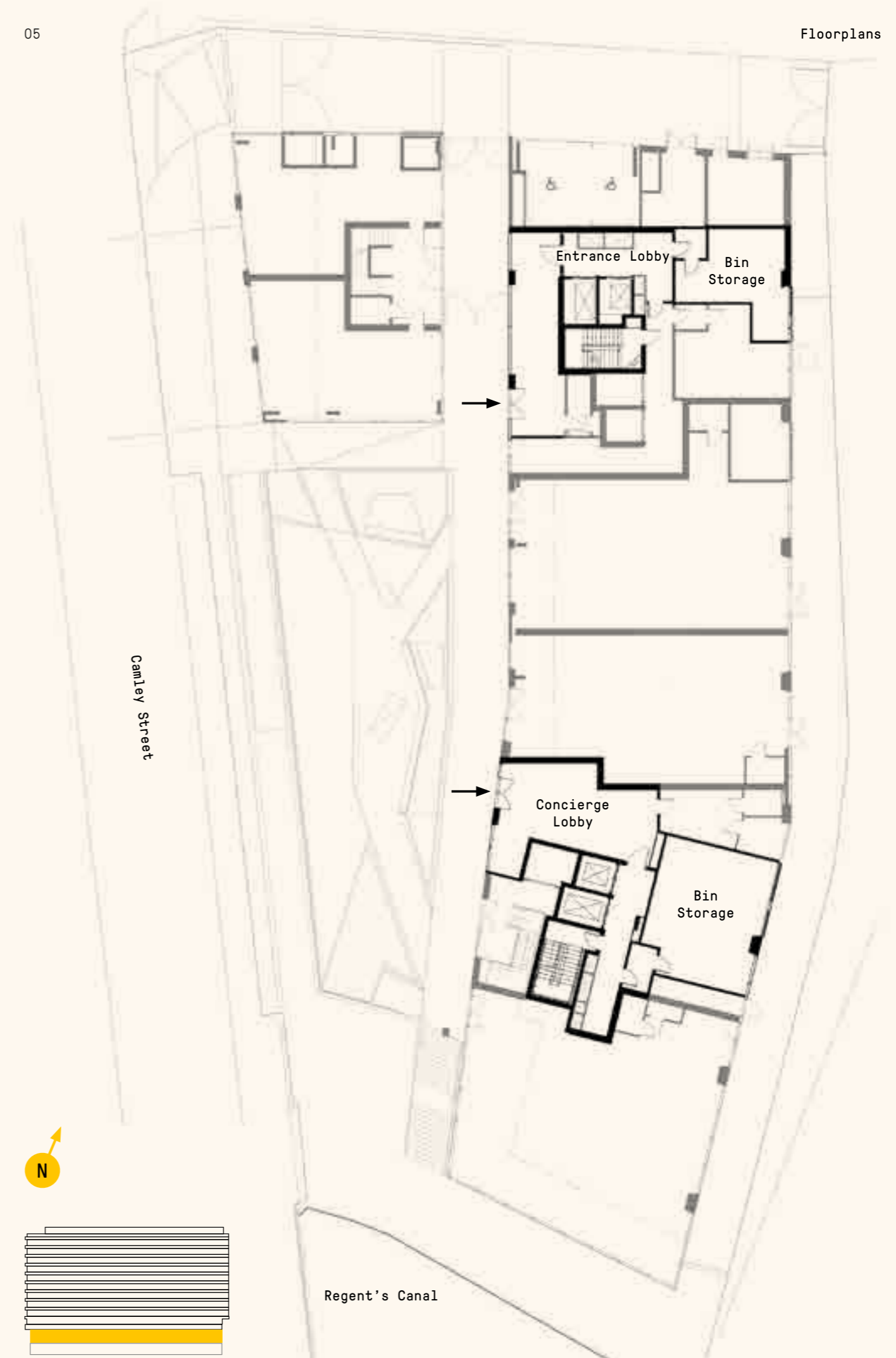




# GROUND FLOOR

Onyx Apartments are suitably laid out to ensure maximum ease of access to your apartment, with lifts and staircases positioned at either end of the building. Two enticing entrance lobbies lead in from Camley Street, guiding you into the sleek and modern interior of the ground floor.

As a resident, you will have the convenience and security of a 24 hour concierge, in addition to a video entry system in every home, giving you peace of mind.





# 1<sup>ST</sup> FLOOR

**01**

<b>Total Internal Area</b>	<b>70.8m<sup>2</sup></b>	<b>762.1ft<sup>2</sup></b>
<b>Total External Area</b>	<b>12.6m<sup>2</sup></b>	<b>135.3ft<sup>2</sup></b>
Master Bedroom	4.40 x 2.83	14'5" x 9'4"
Bedroom 2	3.28 x 2.78	10'9" x 9'2"
Living Room	5.36 x 3.66	17'7" x 12'0"
Kitchen	3.49 x 2.43	11'6" x 8'00"
Bathroom	2.20 x 2.00	7'3" x 6'7"
En-Suite	2.20 x 1.50	7'3" x 4'11"
Winter Garden 1	5.80 x 1.37	19'0" x 4'6"
Winter Garden 2	3.40 x 1.25	11'2" x 4'1"

**02**

<b>Total Internal Area</b>	<b>51.0m<sup>2</sup></b>	<b>549.0ft<sup>2</sup></b>
<b>Total External Area</b>	<b>10.4m<sup>2</sup></b>	<b>111.9ft<sup>2</sup></b>
Master Bedroom	3.48 x 3.31	11'5" x 10'10"
Living Room	4.16 x 3.68	13'8" x 12'1"
Kitchen	2.56 x 2.00	8'5" x 6'7"
Bathroom	2.20 x 2.00	7'3" x 6'7"
Terrace	7.10 x 1.47	23'4" x 4'10"

**03**

<b>Total Internal Area</b>	<b>86.3m<sup>2</sup></b>	<b>928.9ft<sup>2</sup></b>
<b>Total External Area</b>	<b>8.3m<sup>2</sup></b>	<b>89.3ft<sup>2</sup></b>
Master Bedroom	6.09 x 4.09	20'0" x 13'5"
Bedroom 2	3.92 x 2.75	12'10" x 9'0"
Bedroom 3	2.82 x 2.68	9'3" x 8'9"
Living Room	6.54 x 2.66	21'5" x 8'9"
Kitchen	3.12 x 2.94	10'3" x 9'8"
Bathroom	2.67 x 2.00	8'9" x 6'7"
En-Suite	2.20 x 1.60	7'3" x 5'3"
Winter Garden	6.17 x 1.36	20'3" x 4'5"

**04**

<b>Total Internal Area</b>	<b>70.2m<sup>2</sup></b>	<b>755.6ft<sup>2</sup></b>
<b>Total External Area</b>	<b>5.8m<sup>2</sup></b>	<b>62.4ft<sup>2</sup></b>
Master Bedroom	3.24 x 3.25	10'7" x 10'8"
Bedroom 2	5.22 x 2.74	17'1" x 9'0"
Living Room/Kitchen	6.07 x 5.02	19'11" x 16'5"
Bathroom	2.20 x 2.00	7'3" x 6'7"
En-Suite	2.20 x 2.00	7'3" x 6'7"
Terrace	3.18 x 1.86	10'5" x 6'1"

**05**

<b>Total Internal Area</b>	<b>60.2m<sup>2</sup></b>	<b>648ft<sup>2</sup></b>
<b>Total External Area</b>	<b>6.2m<sup>2</sup></b>	<b>66.7ft<sup>2</sup></b>
Master Bedroom	3.52 x 2.75	11'6" x 9'0"
Bedroom 2	4.58 x 1.93	15'0" x 6'4"
Living Room	6.04 x 3.63	19'10" x 11'11"
Kitchen	2.40 x 2.20	7'9" x 7'3"
Bathroom	2.20 x 2.00	7'3" x 6'7"
Terrace	3.28 x 1.91	10'9" x 6'3"

**06**

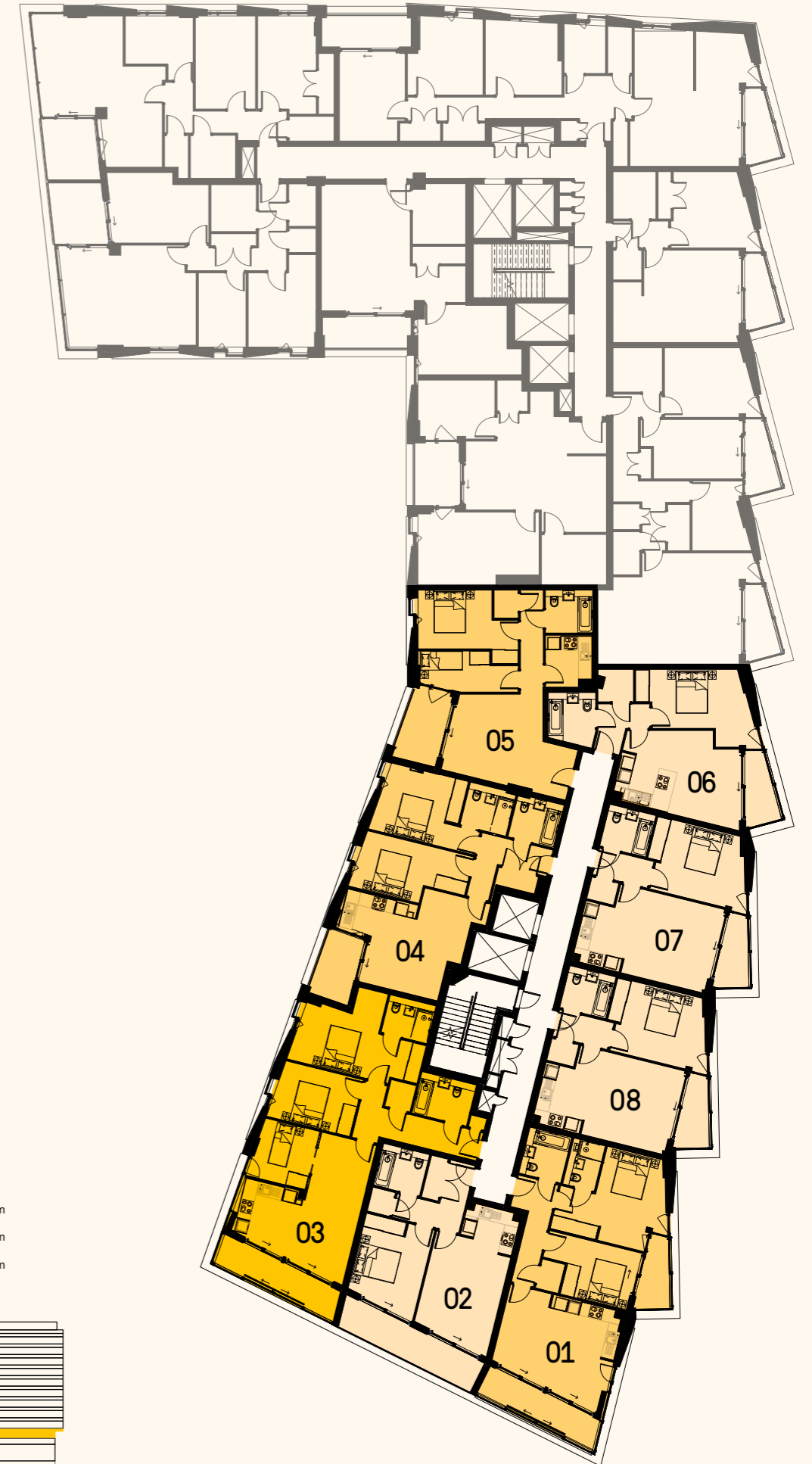
<b>Total Internal Area</b>	<b>50.5m<sup>2</sup></b>	<b>543.6ft<sup>2</sup></b>
<b>Total External Area</b>	<b>4.5m<sup>2</sup></b>	<b>48.4ft<sup>2</sup></b>
Master Bedroom	4.57 x 2.76	15'0" x 9'1"
Living Room/Kitchen	5.87 x 4.00	19'3" x 13'1"
Bathroom	2.36 x 2.21	7'09" x 7'3"
Winter Garden	3.40 x 1.25	11'2" x 4'1"

**07**

<b>Total Internal Area</b>	<b>50.7m<sup>2</sup></b>	<b>545.7ft<sup>2</sup></b>
<b>Total External Area</b>	<b>4.5m<sup>2</sup></b>	<b>48.4ft<sup>2</sup></b>
Master Bedroom	4.00 x 3.35	13'1" x 11'0"
Living Room	4.09 x 4.08	13'5" x 13'5"
Kitchen	2.88 x 2.41	9'6" x 7'11"
Bathroom	2.20 x 2.00	7'3" x 6'7"
Winter Garden	3.40 x 1.25	11'2" x 4'1"

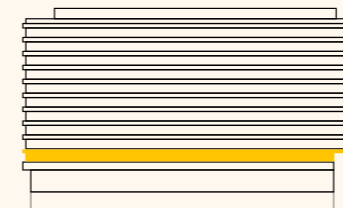
**08**

<b>Total Internal Area</b>	<b>50.7m<sup>2</sup></b>	<b>545.7ft<sup>2</sup></b>
<b>Total External Area</b>	<b>4.5m<sup>2</sup></b>	<b>48.4m<sup>2</sup></b>
Master Bedroom	4.00 x 3.35	13'1" x 11'0"
Living Room	4.09 x 4.08	13'5" x 13'5"
Kitchen	2.88 x 2.41	9'6" x 7'11"
Bathroom	2.20 x 2.00	7'3" x 6'7"
Winter Garden	3.40 x 1.25	11'2" x 4'1"



**N**

- 3 Bedroom
- 2 Bedroom
- 1 Bedroom



For Disclaimers please see Plans on divider.  
Total Internal Area excludes Winter Gardens and / or Terraces.



# 2<sup>ND</sup> FLOOR

**09**

<b>Total Internal Area</b>	<b>70.8m<sup>2</sup></b>	<b>762.1ft<sup>2</sup></b>
<b>Total External Area</b>	<b>12.6m<sup>2</sup></b>	<b>135.3ft<sup>2</sup></b>
Master Bedroom	4.40 x 2.83	14'5" x 9'4"
Bedroom 2	3.28 x 2.78	10'9" x 9'2"
Living Room	5.36 x 3.66	17'7" x 12'0"
Kitchen	3.49 x 2.43	11'6" x 8'00"
Bathroom	2.20 x 2.00	7'3" x 6'7"
En-Suite	2.20 x 1.50	7'3" x 4'11"
Winter Garden 1	5.80 x 1.37	19'0" x 4'6"
Winter Garden 2	3.40 x 1.25	11'2" x 4'1"

**10**

<b>Total Internal Area</b>	<b>51.0m<sup>2</sup></b>	<b>549.0ft<sup>2</sup></b>
<b>Total External Area</b>	<b>10.4m<sup>2</sup></b>	<b>111.9ft<sup>2</sup></b>
Master Bedroom	3.48 x 3.31	11'5" x 10'10"
Living Room	4.16 x 3.68	13'8" x 12'1"
Kitchen	2.56 x 2.00	8'5" x 6'7"
Bathroom	2.20 x 2.00	7'3" x 6'7"
Terrace	7.10 x 1.47	23'4" x 4'10"

**11**

<b>Total Internal Area</b>	<b>86.3m<sup>2</sup></b>	<b>928.9ft<sup>2</sup></b>
<b>Total External Area</b>	<b>8.3m<sup>2</sup></b>	<b>89.3ft<sup>2</sup></b>
Master Bedroom	6.09 x 4.09	20'0" x 13'5"
Bedroom 2	3.92 x 2.75	12'10" x 9'0"
Bedroom 3	2.82 x 2.68	9'3" x 8'9"
Living Room	6.54 x 2.66	21'5" x 8'9"
Kitchen	3.12 x 2.94	10'3" x 9'8"
Bathroom	2.67 x 2.00	8'9" x 6'7"
En-Suite	2.20 x 1.60	7'3" x 5'3"
Winter Garden	6.17 x 1.36	20'3" x 4'5"

**12**

<b>Total Internal Area</b>	<b>70.2m<sup>2</sup></b>	<b>755.6ft<sup>2</sup></b>
<b>Total External Area</b>	<b>5.8m<sup>2</sup></b>	<b>62.4ft<sup>2</sup></b>
Master Bedroom	3.24 x 3.25	10'7" x 10'8"
Bedroom 2	5.22 x 2.74	17'1" x 9'0"
Living Room/Kitchen	6.07 x 5.02	19'11" x 16'5"
Bathroom	2.20 x 2.00	7'3" x 6'7"
En-Suite	2.20 x 2.00	7'3" x 6'7"
Terrace	3.18 x 1.86	10'5" x 6'1"

**13**

<b>Total Internal Area</b>	<b>61.9m<sup>2</sup></b>	<b>666.3ft<sup>2</sup></b>
<b>Total External Area</b>	<b>6.2m<sup>2</sup></b>	<b>66.7ft<sup>2</sup></b>
Master Bedroom	4.32 x 3.87	14'2" x 12'8"
Living Room	4.56 x 3.81	14'11" x 12'6"
Kitchen	3.63 x 2.23	11'11" x 7'4"
Bathroom	2.80 x 2.40	9'2" x 7'10"
Terrace	3.40 x 2.07	11'2" x 6'10"

**14**

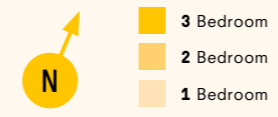
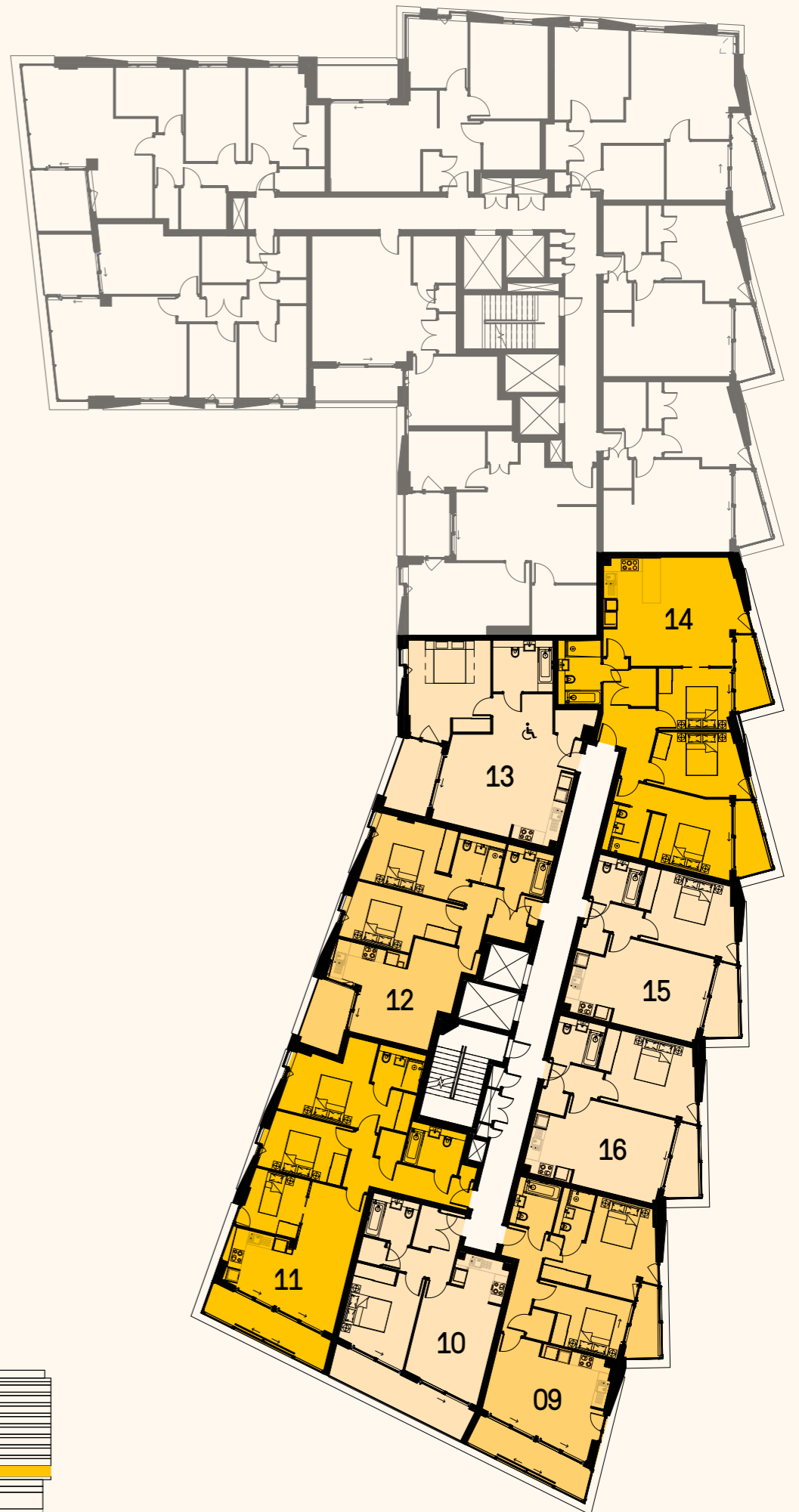
<b>Total Internal Area</b>	<b>94.4m<sup>2</sup></b>	<b>1016.1ft<sup>2</sup></b>
<b>Total External Area</b>	<b>9.0m<sup>2</sup></b>	<b>96.8ft<sup>2</sup></b>
Master Bedroom	3.43 x 3.30	11'3" x 10'10"
Bedroom 2	4.10 x 3.08	13'5" x 10'1"
Bedroom 3	3.48 x 2.91	11'5" x 9'7"
Living Room	5.11 x 3.75	16'9" x 12'3"
Kitchen	3.17 x 2.71	10'5" x 8'11"
Bathroom	3.00 x 2.00	9'10" x 6'7"
En-Suite	2.20 x 1.80	7'3" x 5'11"
Winter Garden 1	3.40 x 1.25	11'2" x 4'1"
Winter Garden 2	3.40 x 1.25	11'2" x 4'1"

**15**

<b>Total Internal Area</b>	<b>50.7m<sup>2</sup></b>	<b>545.7ft<sup>2</sup></b>
<b>Total External Area</b>	<b>4.5m<sup>2</sup></b>	<b>48.4ft<sup>2</sup></b>
Master Bedroom	4.00 x 3.35	13'1" x 11'0"
Living Room	4.09 x 4.08	13'5" x 13'5"
Kitchen	2.88 x 2.41	9'6" x 7'11"
Bathroom	2.20 x 2.00	7'3" x 6'7"
Winter Garden	3.40 x 1.25	11'2" x 4'1"

**16**

<b>Total Internal Area</b>	<b>50.7m<sup>2</sup></b>	<b>545.7ft<sup>2</sup></b>
<b>Total External Area</b>	<b>4.5m<sup>2</sup></b>	<b>48.4ft<sup>2</sup></b>
Master Bedroom	4.00 x 3.35	13'1" x 11'0"
Living Room	4.09 x 4.08	13'5" x 13'5"
Kitchen	2.88 x 2.41	9'6" x 7'11"
Bathroom	2.20 x 2.00	7'3" x 6'7"
Winter Garden	3.40 x 1.25	11'2" x 4'1"



For Disclaimers please see Plans on divider.  
Total Internal Area excludes Winter Gardens and / or Terraces.



# 3<sup>RD</sup> FLOOR

**17**

<b>Total Internal Area</b>	<b>70.8m<sup>2</sup></b>	<b>762.1ft<sup>2</sup></b>
<b>Total External Area</b>	<b>12.6m<sup>2</sup></b>	<b>135.3ft<sup>2</sup></b>
Master Bedroom	4.40 x 2.83	14'5" x 9'4"
Bedroom 2	3.28 x 2.78	10'9" x 9'2"
Living Room	5.36 x 3.66	17'7" x 12'0"
Kitchen	3.49 x 2.43	11'6" x 8'00"
Bathroom	2.20 x 2.00	7'3" x 6'7"
En-Suite	2.20 x 1.50	7'3" x 4'11"
Winter Garden 1	5.80 x 1.37	19'0" x 4'6"
Winter Garden 2	3.40 x 1.25	11'2" x 4'1"

**18**

<b>Total Internal Area</b>	<b>51.0m<sup>2</sup></b>	<b>549.0ft<sup>2</sup></b>
<b>Total External Area</b>	<b>10.4m<sup>2</sup></b>	<b>111.9ft<sup>2</sup></b>
Master Bedroom	3.48 x 3.31	11'5" x 10'10"
Living Room	4.16 x 3.68	13'8" x 12'1"
Kitchen	2.56 x 2.00	8'5" x 6'7"
Bathroom	2.20 x 2.00	7'3" x 6'7"
Terrace	7.10 x 1.47	23'4" x 4'10"

**19**

<b>Total Internal Area</b>	<b>79.2m<sup>2</sup></b>	<b>852.5ft<sup>2</sup></b>
<b>Total External Area</b>	<b>8.3m<sup>2</sup></b>	<b>89.3ft<sup>2</sup></b>
Master Bedroom	3.74 x 3.19	12'3" x 10'6"
Bedroom 2	4.00 x 2.84	13'1" x 9'4"
Living Room/Kitchen	5.59 x 4.91	18'4" x 16'1"
Bathroom	2.68 x 2.10	8'9" x 6'11"
En-Suite	2.24 x 1.81	7'4" x 5'11"
Winter Garden	6.22 x 1.36	20'5" x 4'6"

**20**

<b>Total Internal Area</b>	<b>77.1m<sup>2</sup></b>	<b>829.9ft<sup>2</sup></b>
<b>Total External Area</b>	<b>5.8m<sup>2</sup></b>	<b>62.4ft<sup>2</sup></b>
Master Bedroom	3.31 x 3.21	10'10" x 10'6"
Bedroom 2	4.39 x 2.73	14'5" x 9'0"
Living Room/Kitchen	6.11 x 3.75	20'0" x 12'4"
Bathroom	2.20 x 2.00	7'3" x 6'7"
En-Suite	2.20 x 2.00	7'3" x 6'7"
Terrace	3.18 x 1.86	10'5" x 6'1"

**21**

<b>Total Internal Area</b>	<b>61.9m<sup>2</sup></b>	<b>666.3ft<sup>2</sup></b>
<b>Total External Area</b>	<b>6.2m<sup>2</sup></b>	<b>66.7ft<sup>2</sup></b>
Master Bedroom	4.32 x 3.87	14'2" x 12'8"
Living Room	4.56 x 3.81	14'11" x 12'6"
Kitchen	3.63 x 2.23	11'11" x 7'4"
Bathroom	2.80 x 2.40	9'2" x 7'10"
Terrace	3.40 x 2.07	11'2" x 6'10"

**22**

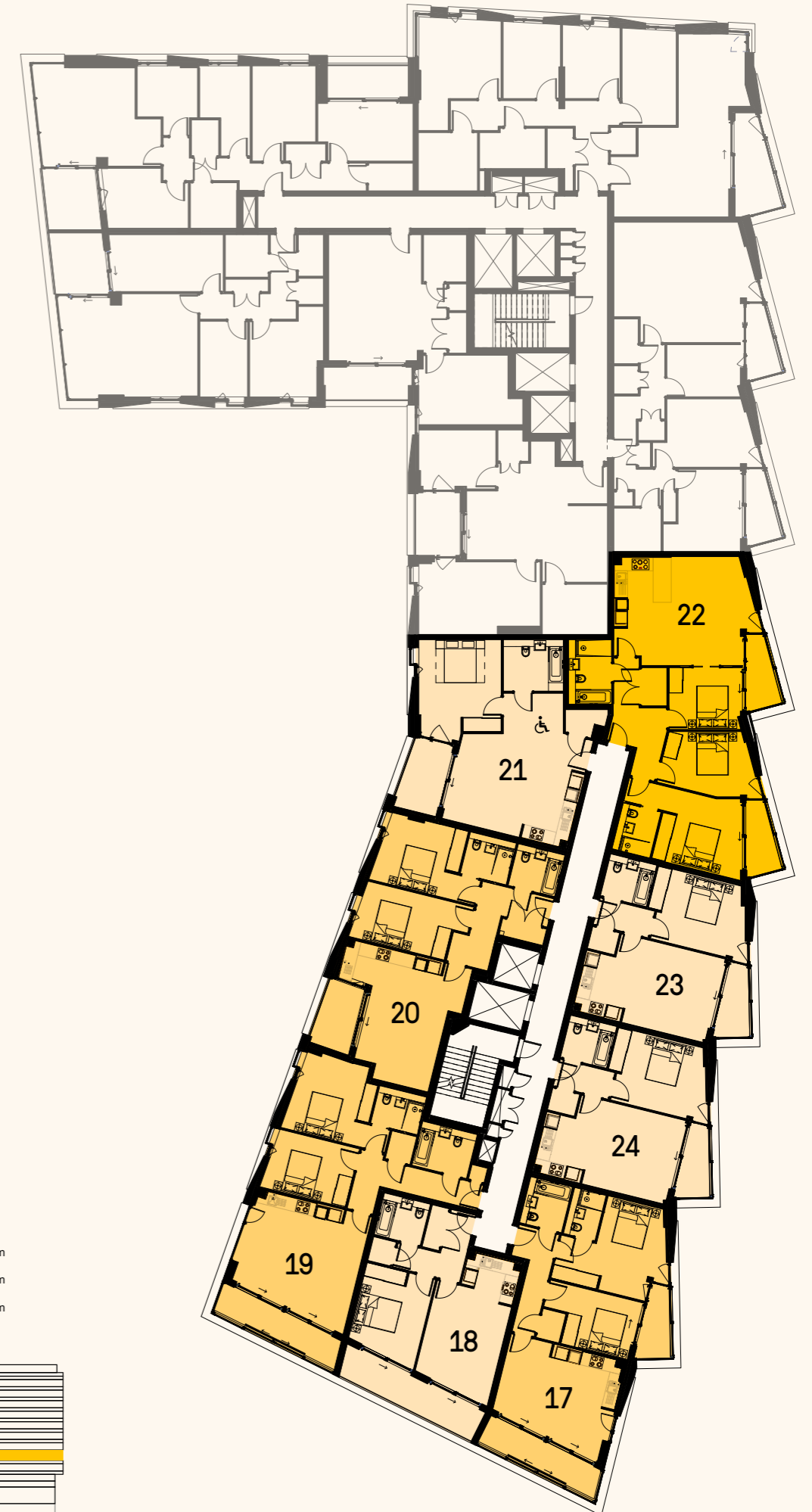
<b>Total Internal Area</b>	<b>94.4m<sup>2</sup></b>	<b>1016.1ft<sup>2</sup></b>
<b>Total External Area</b>	<b>9.0m<sup>2</sup></b>	<b>96.8ft<sup>2</sup></b>
Master Bedroom	3.43 x 3.30	11'3" x 10'10"
Bedroom 2	4.10 x 3.08	13'5" x 10'1"
Bedroom 3	3.48 x 2.91	11'5" x 9'7"
Living Room	5.11 x 3.75	16'9" x 12'3"
Kitchen	3.17 x 2.71	10'5" x 8'11"
Bathroom	3.00 x 2.00	9'10" x 6'7"
En-Suite	2.20 x 1.80	7'3" x 5'11"
Winter Garden 1	3.40 x 1.25	11'2" x 4'1"
Winter Garden 2	3.40 x 1.25	11'2" x 4'1"

**23**

<b>Total Internal Area</b>	<b>50.7m<sup>2</sup></b>	<b>545.7ft<sup>2</sup></b>
<b>Total External Area</b>	<b>4.5m<sup>2</sup></b>	<b>48.4ft<sup>2</sup></b>
Master Bedroom	4.00 x 3.35	13'1" x 11'0"
Living Room	4.09 x 4.08	13'5" x 13'5"
Kitchen	2.88 x 2.41	9'6" x 7'11"
Bathroom	2.20 x 2.00	7'3" x 6'7"
Winter Garden	3.40 x 1.25	11'2" x 4'1"

**24**

<b>Total Internal Area</b>	<b>50.7m<sup>2</sup></b>	<b>545.7ft<sup>2</sup></b>
<b>Total External Area</b>	<b>4.5m<sup>2</sup></b>	<b>48.4ft<sup>2</sup></b>
Master Bedroom	4.00 x 3.35	13'1" x 11'0"
Living Room	4.09 x 4.08	13'5" x 13'5"
Kitchen	2.88 x 2.41	9'6" x 7'11"
Bathroom	2.20 x 2.00	7'3" x 6'7"
Winter Garden	3.40 x 1.25	11'2" x 4'1"



**N**

- 3 Bedroom
- 2 Bedroom
- 1 Bedroom



For Disclaimers please see Plans on divider.  
Total Internal Area excludes Winter Gardens and / or Terraces.



# 4<sup>TH</sup> FLOOR

**25**

<b>Total Internal Area</b>	<b>70.8m<sup>2</sup></b>	<b>762.1ft<sup>2</sup></b>
<b>Total External Area</b>	<b>12.6m<sup>2</sup></b>	<b>135.3ft<sup>2</sup></b>
Master Bedroom	4.40 x 2.83	14'5" x 9'4"
Bedroom 2	3.28 x 2.78	10'9" x 9'2"
Living Room	5.36 x 3.66	17'7" x 12'0"
Kitchen	3.49 x 2.43	11'6" x 8'00"
Bathroom	2.20 x 2.00	7'3" x 6'7"
En-Suite	2.20 x 1.50	7'3" x 4'11"
Winter Garden 1	5.80 x 1.37	19'0" x 4'6"
Winter Garden 2	3.40 x 1.25	11'2" x 4'1"

**26**

<b>Total Internal Area</b>	<b>51.0m<sup>2</sup></b>	<b>549.0ft<sup>2</sup></b>
<b>Total External Area</b>	<b>10.4m<sup>2</sup></b>	<b>111.9ft<sup>2</sup></b>
Master Bedroom	3.48 x 3.31	11'5" x 10'10"
Living Room	4.16 x 3.68	13'8" x 12'1"
Kitchen	2.56 x 2.00	8'5" x 6'7"
Bathroom	2.20 x 2.00	7'3" x 6'7"
Terrace	7.10 x 1.47	23'4" x 4'10"

**27**

<b>Total Internal Area</b>	<b>79.2m<sup>2</sup></b>	<b>852.5ft<sup>2</sup></b>
<b>Total External Area</b>	<b>8.3m<sup>2</sup></b>	<b>89.3ft<sup>2</sup></b>
Master Bedroom	3.74 x 3.19	12'3" x 10'6"
Bedroom 2	4.00 x 2.84	13'1" x 9'4"
Living Room/Kitchen	5.59 x 4.91	18'4" x 16'1"
Bathroom	2.68 x 2.10	8'9" x 6'11"
En-Suite	2.24 x 1.81	7'4" x 5'11"
Winter Garden	6.22 x 1.36	20'5" x 4'6"

**28**

<b>Total Internal Area</b>	<b>77.1m<sup>2</sup></b>	<b>829.9ft<sup>2</sup></b>
<b>Total External Area</b>	<b>5.8m<sup>2</sup></b>	<b>62.4ft<sup>2</sup></b>
Master Bedroom	3.31 x 3.21	10'10" x 10'6"
Bedroom 2	4.39 x 2.73	14'5" x 9'0"
Living Room/Kitchen	6.11 x 3.75	20'0" x 12'4"
Bathroom	2.20 x 2.00	7'3" x 6'7"
En-Suite	2.20 x 2.00	7'3" x 6'7"
Terrace	3.18 x 1.86	10'5" x 6'1"

**29**

<b>Total Internal Area</b>	<b>61.9m<sup>2</sup></b>	<b>666.3ft<sup>2</sup></b>
<b>Total External Area</b>	<b>6.2m<sup>2</sup></b>	<b>66.7ft<sup>2</sup></b>
Master Bedroom	4.32 x 3.87	14'2" x 12'8"
Living Room	4.56 x 3.81	14'11" x 12'6"
Kitchen	3.63 x 2.23	11'11" x 7'4"
Bathroom	2.80 x 2.40	9'2" x 7'10"
Terrace	3.40 x 2.07	11'2" x 6'10"

**30**

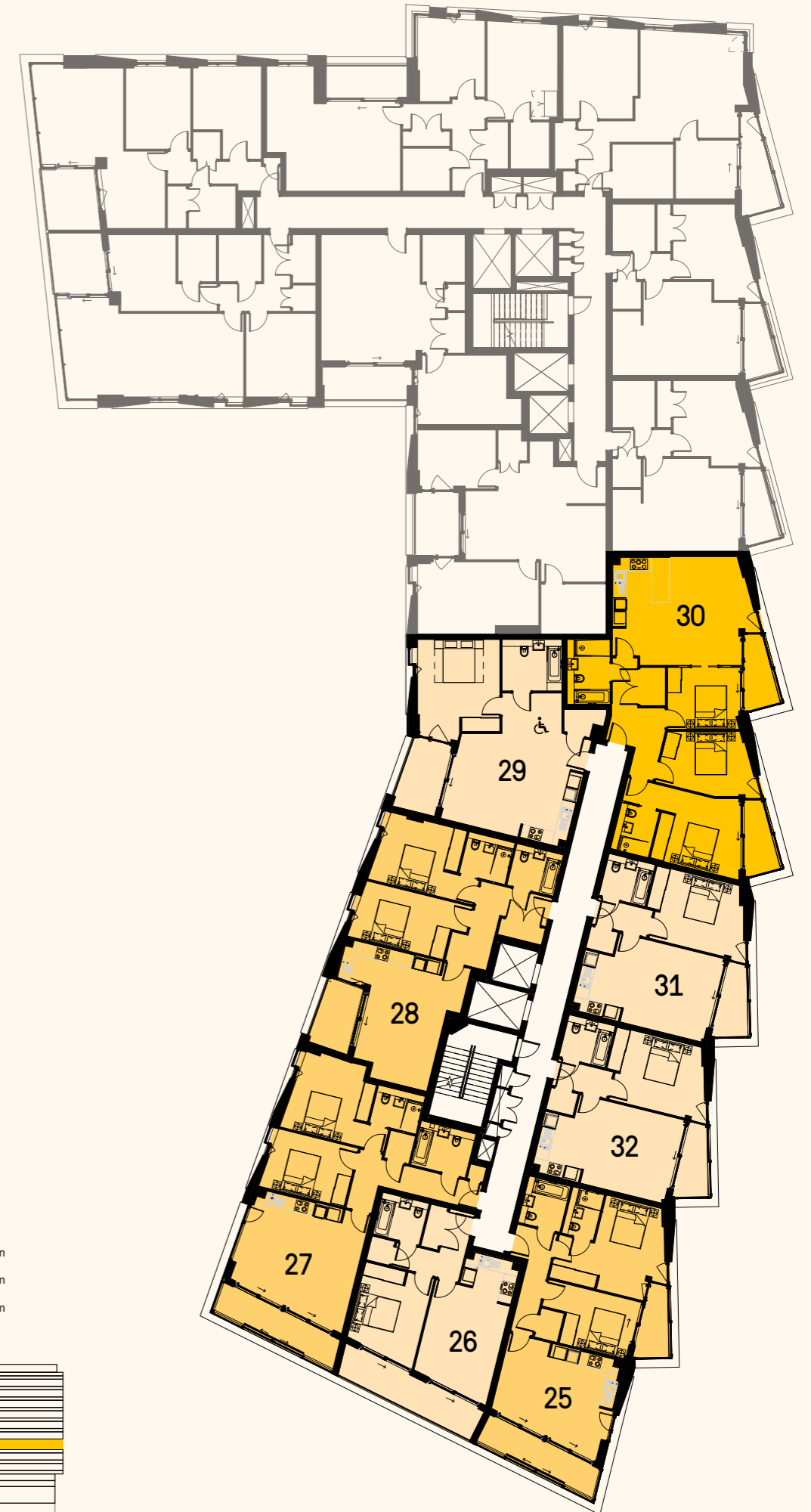
<b>Total Internal Area</b>	<b>94.4m<sup>2</sup></b>	<b>1016.1ft<sup>2</sup></b>
<b>Total External Area</b>	<b>9.0m<sup>2</sup></b>	<b>96.8ft<sup>2</sup></b>
Master Bedroom	3.43 x 3.30	11'3" x 10'10"
Bedroom 2	4.10 x 3.08	13'5" x 10'1"
Bedroom 3	3.48 x 2.91	11'5" x 9'7"
Living Room	5.11 x 3.75	16'9" x 12'3"
Kitchen	3.17 x 2.71	10'5" x 8'11"
Bathroom	3.00 x 2.00	9'10" x 6'7"
En-Suite	2.20 x 1.80	7'3" x 5'11"
Winter Garden 1	3.40 x 1.25	11'2" x 4'1"
Winter Garden 2	3.40 x 1.25	11'2" x 4'1"

**31**

<b>Total Internal Area</b>	<b>50.7m<sup>2</sup></b>	<b>545.7ft<sup>2</sup></b>
<b>Total External Area</b>	<b>4.5m<sup>2</sup></b>	<b>48.4ft<sup>2</sup></b>
Master Bedroom	4.00 x 3.35	13'1" x 11'0"
Living Room	4.09 x 4.08	13'5" x 13'5"
Kitchen	2.88 x 2.41	9'6" x 7'11"
Bathroom	2.20 x 2.00	7'3" x 6'7"
Winter Garden	3.40 x 1.25	11'2" x 4'1"

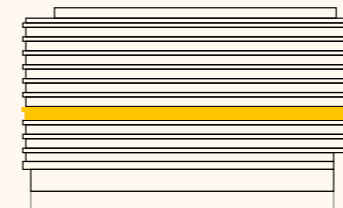
**32**

<b>Total Internal Area</b>	<b>50.7m<sup>2</sup></b>	<b>545.7ft<sup>2</sup></b>
<b>Total External Area</b>	<b>4.5m<sup>2</sup></b>	<b>48.4ft<sup>2</sup></b>
Master Bedroom	4.00 x 3.35	13'1" x 11'0"
Living Room	4.09 x 4.08	13'5" x 13'5"
Kitchen	2.88 x 2.41	9'6" x 7'11"
Bathroom	2.20 x 2.00	7'3" x 6'7"
Winter Garden	3.40 x 1.25	11'2" x 4'1"



**N**

- 3 Bedroom
- 2 Bedroom
- 1 Bedroom



For Disclaimers please see Plans on divider.  
Total Internal Area excludes Winter Gardens and / or Terraces.



# 5<sup>TH</sup> FLOOR

**33**

<b>Total Internal Area</b>	<b>70.8m<sup>2</sup></b>	<b>762.1ft<sup>2</sup></b>
<b>Total External Area</b>	<b>12.6m<sup>2</sup></b>	<b>135.3ft<sup>2</sup></b>
Master Bedroom	4.40 x 2.83	14'5" x 9'4"
Bedroom 2	3.28 x 2.78	10'9" x 9'2"
Living Room	5.36 x 3.66	17'7" x 12'0"
Kitchen	3.49 x 2.43	11'6" x 8'00"
Bathroom	2.20 x 2.00	7'3" x 6'7"
En-Suite	2.20 x 1.50	7'3" x 4'11"
Winter Garden 1	5.80 x 1.37	19'0" x 4'6"
Winter Garden 2	3.40 x 1.25	11'2" x 4'1"

**34**

<b>Total Internal Area</b>	<b>51.0m<sup>2</sup></b>	<b>549.0ft<sup>2</sup></b>
<b>Total External Area</b>	<b>10.4m<sup>2</sup></b>	<b>111.9ft<sup>2</sup></b>
Master Bedroom	3.48 x 3.31	11'5" x 10'10"
Living Room	4.16 x 3.68	13'8" x 12'1"
Kitchen	2.56 x 2.00	8'5" x 6'7"
Bathroom	2.20 x 2.00	7'3" x 6'7"
Terrace	7.10 x 1.47	23'4" x 4'10"

**35**

<b>Total Internal Area</b>	<b>79.2m<sup>2</sup></b>	<b>852.5ft<sup>2</sup></b>
<b>Total External Area</b>	<b>8.3m<sup>2</sup></b>	<b>89.3ft<sup>2</sup></b>
Master Bedroom	3.74 x 3.19	12'3" x 10'6"
Bedroom 2	4.00 x 2.84	13'1" x 9'4"
Living Room/Kitchen	5.59 x 4.91	18'4" x 16'1"
Bathroom	2.68 x 2.10	8'9" x 6'11"
En-Suite	2.24 x 1.81	7'4" x 5'11"
Winter Garden	6.22 x 1.36	20'5" x 4'6"

**36**

<b>Total Internal Area</b>	<b>77.1m<sup>2</sup></b>	<b>829.9ft<sup>2</sup></b>
<b>Total External Area</b>	<b>5.8m<sup>2</sup></b>	<b>62.4ft<sup>2</sup></b>
Master Bedroom	3.31 x 3.21	10'10" x 10'6"
Bedroom 2	4.39 x 2.73	14'5" x 9'0"
Living Room/Kitchen	6.11 x 3.75	20'0" x 12'4"
Bathroom	2.20 x 2.00	7'3" x 6'7"
En-Suite	2.20 x 2.00	7'3" x 6'7"
Terrace	3.18 x 1.86	10'5" x 6'1"

**37**

<b>Total Internal Area</b>	<b>70.5m<sup>2</sup></b>	<b>758.9ft<sup>2</sup></b>
<b>Total External Area</b>	<b>6.2m<sup>2</sup></b>	<b>66.7ft<sup>2</sup></b>
Master Bedroom	6.34 x 2.75	20'10" x 9'0"
Bedroom 2	5.05 x 2.75	16'7" x 9'0"
Living Room	4.09 x 3.72	13'5" x 12'2"
Kitchen	3.13 x 1.95	10'3" x 6'5"
Bathroom	2.42 x 2.29	7'11" x 7'6"
En-Suite	2.42 x 1.80	7'11" x 5'11"
Terrace	3.28 x 1.91	10'9" x 6'3"

**38**

<b>Total Internal Area</b>	<b>48.9m<sup>2</sup></b>	<b>526.4ft<sup>2</sup></b>
<b>Total External Area</b>	<b>4.5m<sup>2</sup></b>	<b>48.4ft<sup>2</sup></b>
Master Bedroom	3.56 x 2.77	11'8" x 9'1"
Living Room	4.67 x 2.50	15'4" x 8'2"
Kitchen	2.48 x 2.12	8'2" x 6'11"
Bathroom	2.20 x 2.00	7'3" x 6'7"
Winter Garden	3.40 x 1.25	11'2" x 4'1"

**39**

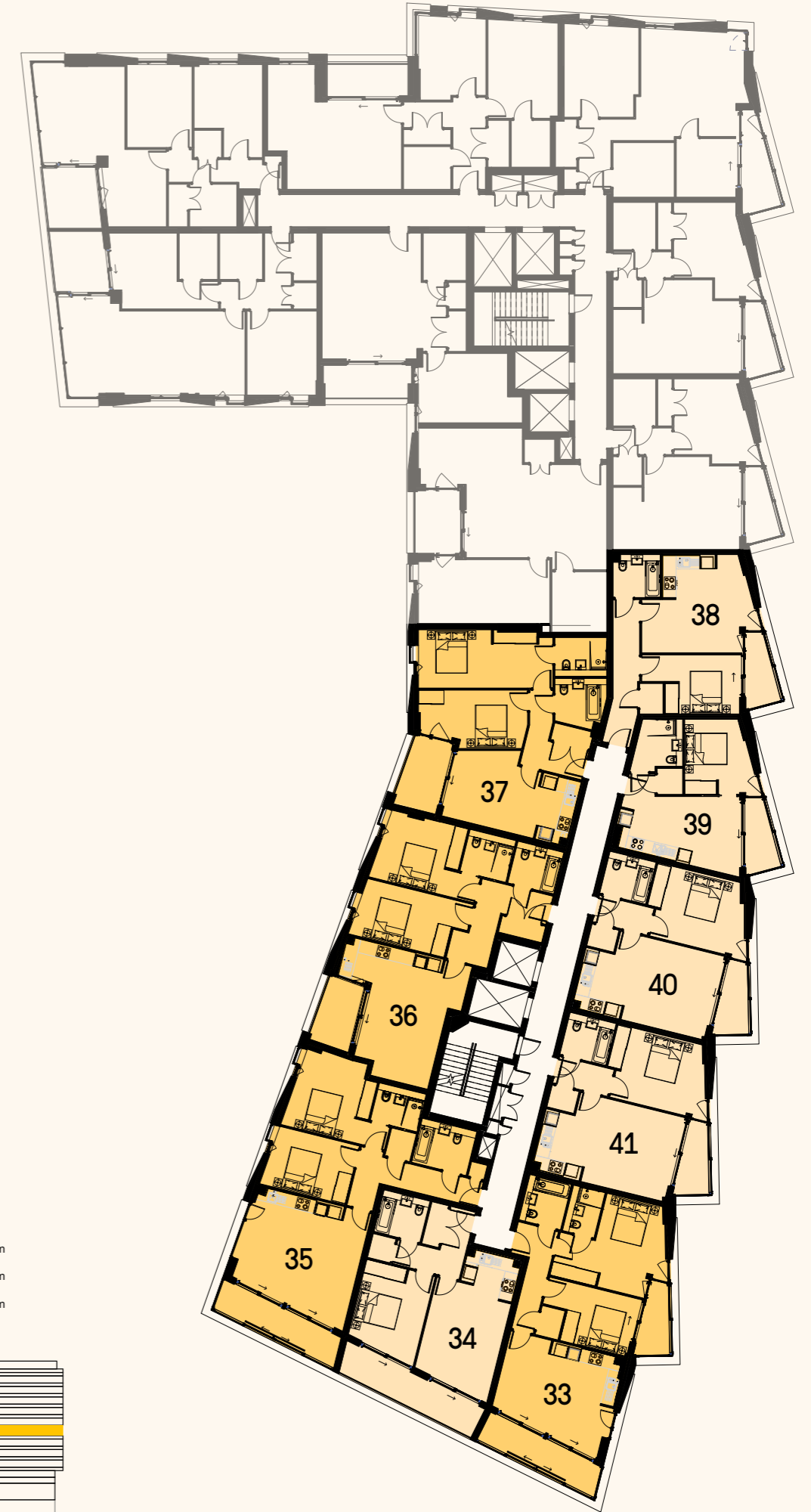
<b>Total Internal Area</b>	<b>38.0m<sup>2</sup></b>	<b>409.0ft<sup>2</sup></b>
<b>Total External Area</b>	<b>4.5m<sup>2</sup></b>	<b>48.4ft<sup>2</sup></b>
Master Bedroom	3.51 x 2.83	11'6" x 9'4"
Living Room	3.38 x 2.12	11'1" x 6'11"
Kitchen	3.78 x 1.89	11'5" x 6'3"
Bathroom	2.28 x 2.18	7'6" x 7'2"
Winter Garden	3.40 x 1.25	11'2" x 4'1"

**40**

<b>Total Internal Area</b>	<b>50.7m<sup>2</sup></b>	<b>545.7ft<sup>2</sup></b>
<b>Total External Area</b>	<b>4.5m<sup>2</sup></b>	<b>48.4ft<sup>2</sup></b>
Master Bedroom	4.00 x 3.35	13'1" x 11'0"
Living Room	4.09 x 4.08	13'5" x 13'5"
Kitchen	2.88 x 2.41	9'6" x 7'11"
Bathroom	2.20 x 2.00	7'3" x 6'7"
Winter Garden	3.40 x 1.25	11'2" x 4'1"

**41**

<b>Total Internal Area</b>	<b>50.7m<sup>2</sup></b>	<b>545.7ft<sup>2</sup></b>
<b>Total External Area</b>	<b>4.5m<sup>2</sup></b>	<b>48.4ft<sup>2</sup></b>
Master Bedroom	4.00 x 3.35	13'1" x 11'0"
Living Room	4.09 x 4.08	13'5" x 13'5"
Kitchen	2.88 x 2.41	9'6" x 7'11"
Bathroom	2.20 x 2.00	7'3" x 6'7"
Winter Garden	3.40 x 1.25	11'2" x 4'1"



**N**

- 3 Bedroom
- 2 Bedroom
- 1 Bedroom



For Disclaimers please see Plans on divider.  
Total Internal Area excludes Winter Gardens and / or Terraces.



# 6<sup>TH</sup> FLOOR

**42**

<b>Total Internal Area</b>	<b>70.8m<sup>2</sup></b>	<b>762.1ft<sup>2</sup></b>
<b>Total External Area</b>	<b>12.6m<sup>2</sup></b>	<b>135.3ft<sup>2</sup></b>
Master Bedroom	4.40 x 2.83	14'5" x 9'4"
Bedroom 2	3.28 x 2.78	10'9" x 9'2"
Living Room	5.36 x 3.66	17'7" x 12'0"
Kitchen	3.49 x 2.43	11'6" x 8'00"
Bathroom	2.20 x 2.00	7'3" x 6'7"
En-Suite	2.20 x 1.50	7'3" x 4'11"
Winter Garden 1	5.80 x 1.37	19'0" x 4'6"
Winter Garden 2	3.40 x 1.25	11'2" x 4'1"

**45**

<b>Total Internal Area</b>	<b>77.1m<sup>2</sup></b>	<b>829.9ft<sup>2</sup></b>
<b>Total External Area</b>	<b>5.8m<sup>2</sup></b>	<b>62.4ft<sup>2</sup></b>
Master Bedroom	3.31 x 3.21	10'10" x 10'6"
Bedroom 2	4.39 x 2.73	14'5" x 9'0"
Living Room/Kitchen	6.11 x 3.75	20'0" x 12'4"
Bathroom	2.20 x 2.00	7'3" x 6'7"
En-Suite	2.20 x 2.00	7'3" x 6'7"
Terrace	3.18 x 1.86	10'5" x 6'1"

**48**

<b>Total Internal Area</b>	<b>50.7m<sup>2</sup></b>	<b>545.7ft<sup>2</sup></b>
<b>Total External Area</b>	<b>4.5m<sup>2</sup></b>	<b>48.4ft<sup>2</sup></b>
Master Bedroom	4.00 x 3.35	13'1" x 11'0"
Living Room	4.09 x 4.08	13'5" x 13'5"
Kitchen	2.88 x 2.41	9'6" x 7'11"
Bathroom	2.20 x 2.00	7'3" x 6'7"
Winter Garden	3.40 x 1.25	11'2" x 4'1"

**51**

<b>Total Internal Area</b>	<b>50.1m<sup>2</sup></b>	<b>539.3ft<sup>2</sup></b>
<b>Total External Area</b>	<b>6.1m<sup>2</sup></b>	<b>65.7ft<sup>2</sup></b>
Master Bedroom	4.20 x 4.14	13'9" x 13'7"
Living Room	4.42 x 3.64	14'6" x 11'11"
Kitchen	3.35 x 2.30	11'0" x 7'7"
Bathroom	2.20 x 2.00	7'3" x 6'7"
Terrace	3.99 x 1.55	13'1" x 5'1"

**54**

<b>Total Internal Area</b>	<b>50.4m<sup>2</sup></b>	<b>545.7ft<sup>2</sup></b>
<b>Total External Area</b>	<b>5.2m<sup>2</sup></b>	<b>56.0ft<sup>2</sup></b>
Master Bedroom	4.11 x 3.44	13'6" x 11'3"
Living Room/Kitchen	5.14 x 4.11	16'11" x 13'6"
Bathroom	2.20 x 2.00	7'3" x 6'7"
Terrace	3.80 x 1.39	12'6" x 4'7"

**56**

<b>Total Internal Area</b>	<b>46.6m<sup>2</sup></b>	<b>501.6ft<sup>2</sup></b>
<b>Total External Area</b>	<b>4.5m<sup>2</sup></b>	<b>48.4ft<sup>2</sup></b>
Master Bedroom	4.18 x 3.39	13'8" x 11'2"
Living Room	3.99 x 3.28	13'1" x 10'9"
Kitchen	2.80 x 2.68	9'2" x 8'10"
Bathroom	2.20 x 2.00	7'3" x 6'7"
Winter Garden	3.40 x 1.25	11'2" x 4'1"

**43**

<b>Total Internal Area</b>	<b>51.0m<sup>2</sup></b>	<b>549.0ft<sup>2</sup></b>
<b>Total External Area</b>	<b>10.4m<sup>2</sup></b>	<b>111.9ft<sup>2</sup></b>
Master Bedroom	3.48 x 3.31	11'5" x 10'10"
Living Room	4.16 x 3.68	13'8" x 12'11"
Kitchen	2.56 x 2.00	8'5" x 6'7"
Bathroom	2.20 x 2.00	7'3" x 6'7"
Terrace	7.10 x 1.47	23'4" x 4'10"

**46**

<b>Total Internal Area</b>	<b>76.3m<sup>2</sup></b>	<b>821.3ft<sup>2</sup></b>
<b>Total External Area</b>	<b>6.2m<sup>2</sup></b>	<b>66.7ft<sup>2</sup></b>
Master Bedroom	6.13 x 2.91	20'1" x 9'6"
Bedroom 2	4.88 x 2.90	16'0" x 9'6"
Living Room	4.39 x 3.61	14'5" x 11'10"
Kitchen	4.13 x 1.73	13'7" x 5'8"
Bathroom	2.20 x 2.00	7'3" x 6'7"
En-Suite	2.20 x 1.67	7'3" x 5'6"
Terrace	3.28 x 1.91	10'9" x 6'3"

**49**

<b>Total Internal Area</b>	<b>50.7m<sup>2</sup></b>	<b>545.7ft<sup>2</sup></b>
<b>Total External Area</b>	<b>4.5m<sup>2</sup></b>	<b>48.4ft<sup>2</sup></b>
Master Bedroom	4.00 x 3.35	13'1" x 11'0"
Living Room	4.09 x 4.08	13'5" x 13'5"
Kitchen	2.88 x 2.41	9'6" x 7'11"
Bathroom	2.20 x 2.00	7'3" x 6'7"
Winter Garden	3.40 x 1.25	11'2" x 4'1"

**52**

<b>Total Internal Area</b>	<b>85.9m<sup>2</sup></b>	<b>924.6ft<sup>2</sup></b>
<b>Total External Area</b>	<b>7.2m<sup>2</sup></b>	<b>77.5ft<sup>2</sup></b>
Master Bedroom	4.44 x 2.95	14'7" x 9'8"
Bedroom 2	3.34 x 2.77	10'11" x 9'1"
Bedroom 3	3.34 x 2.75	10'11" x 9'0"
Living Room	4.60 x 3.49	15'1" x 12'2"
Kitchen	4.60 x 2.62	15'1" x 8'7"
Bathroom	2.20 x 2.20	7'3" x 7'3"
En-Suite	2.95 x 2.00	9'8" x 6'7"
Terrace	2.89 x 2.50	9'6" x 8'2"

**55**

<b>Total Internal Area</b>	<b>87.0m<sup>2</sup></b>	<b>936.5ft<sup>2</sup></b>
<b>Total External Area</b>	<b>7.6m<sup>2</sup></b>	<b>81.8 ft<sup>2</sup></b>
Master Bedroom	5.30 x 3.76	17'5" x 12'4"
Bedroom 2	3.60 x 2.75	11'10" x 9'0"
Bedroom 3	3.40 x 2.75	11'2" x 9'0"
Living Room	5.31 x 3.60	17'5" x 11'10"
Kitchen	4.10 x 1.90	13'6" x 6'3"
Bathroom	2.35 x 2.00	7'8" x 6'7"
En-Suite	2.55 x 2.19	8'4" x 7'2"
Winter Garden	4.74 x 1.65	15'6" x 5'5"

**57**

<b>Total Internal Area</b>	<b>46.6m<sup>2</sup></b>	<b>501.6ft<sup>2</sup></b>
<b>Total External Area</b>	<b>4.5m<sup>2</sup></b>	<b>48.4ft<sup>2</sup></b>
Master Bedroom	4.18 x 3.39	13'8" x 11'2"
Living Room	3.99 x 3.28	13'1" x 10'9"
Kitchen	2.80 x 2.68	9'2" x 8'10"
Bathroom	2.20 x 2.00	7'3" x 6'7"
Winter Garden	3.40 x 1.25	11'2" x 4'1"

**44**

<b>Total Internal Area</b>	<b>79.2m<sup>2</sup></b>	<b>852.5ft<sup>2</sup></b>
<b>Total External Area</b>	<b>8.3m<sup>2</sup></b>	<b>89.3ft<sup>2</sup></b>
Master Bedroom	3.74 x 3.19	12'3" x 10'6"
Bedroom 2	4.00 x 2.84	13'1" x 9'4"
Living Room/Kitchen	5.59 x 4.91	18'4" x 16'1"
Bathroom	2.68 x 2.10	8'9" x 6'11"
En-Suite	2.24 x 1.81	7'4" x 5'11"
Winter Garden	6.22 x 1.36	20'5" x 4'6"

**47**

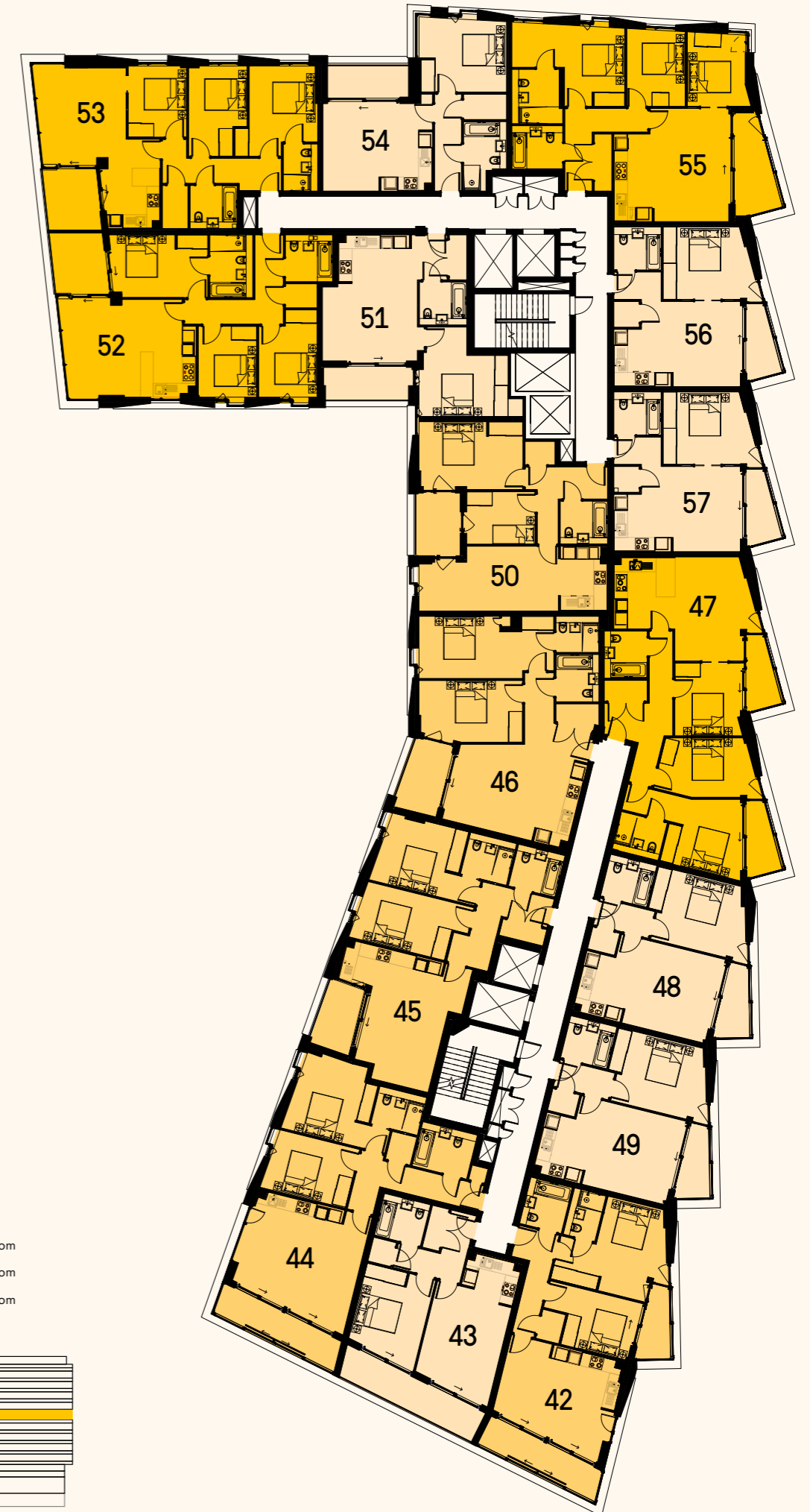
<b>Total Internal Area</b>	<b>89.6m<sup>2</sup></b>	<b>964.4ft<sup>2</sup></b>
<b>Total External Area</b>	<b>9.0m<sup>2</sup></b>	<b>96.8ft<sup>2</sup></b>
Master Bedroom	3.39 x 3.65	11'1" x 12'0"
Bedroom 2	4.44 x 2.75	14'7" x 9'0"
Bedroom 3	3.42 x 3.14	11'3" x 10'4"
Living Room	4.88 x 3.54	16'0" x 11'7"
Kitchen	3.34 x 2.89	11'0" x 9'6"
Bathroom	2.20 x 2.00	7'3" x 6'7"
En-Suite	2.20 x 1.80	7'3" x 5'11"
Winter Garden 1	3.40 x 1.25	11'2" x 4'1"
Winter Garden 2	3.40 x 1.25	11'2" x 4'1"

**50**

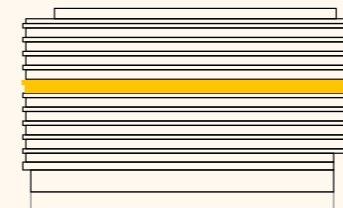
<b>Total Internal Area</b>	<b>64.3m<sup>2</sup></b>	<b>692.1ft<sup>2</sup></b>
<b>Total External Area</b>	<b>6.1m<sup>2</sup></b>	<b>65.7ft<sup>2</sup></b>
Master Bedroom	4.89 x 3.20	16'1" x 10'6"
Bedroom 2	3.22 x 2.46	10'7" x 8'1"
Living Room	6.58 x 3.03	21'7" x 9'11"
Kitchen	3.03 x 2.20	9'11" x 7'3"
Bathroom	2.19 x 2.00	7'2" x 6'7"
Terrace	2.96 x 2.09	9'8" x 6'10"

**53**

<b>Total Internal Area</b>	<b>84.8m<sup>2</sup></b>	<b>912.8ft<sup>2</sup></b>
<b>Total External Area</b>	<b>7.2m<sup>2</sup></b>	<b>77.5ft<sup>2</sup></b>
Master Bedroom	4.25 x 3.20	13'11" x 10'6"
Bedroom 2	4.25 x 2.75	13'11" x 9'0"
Bedroom 3	3.35 x 2.75	11'0" x 9'0"
Living Room	4.30 x 4.06	14'1" x 13'4"
Kitchen	3.35 x 2.45	11'0" x 8'0"
Bathroom	2.20 x 2.00	7'3" x 6'7"
En-Suite	2.20 x 1.60	7'3" x 5'3"
Terrace	2.89 x 2.50	9'6" x 8'2"



3 Bedroom  
 2 Bedroom  
 1 Bedroom



For Disclaimers please see Plans on divider.  
Total Internal Area excludes Winter Gardens and / or Terraces.



# 7<sup>TH</sup> FLOOR

**58**

<b>Total Internal Area</b>	<b>70.8m<sup>2</sup></b>	<b>762.1ft<sup>2</sup></b>
<b>Total External Area</b>	<b>12.6m<sup>2</sup></b>	<b>135.3ft<sup>2</sup></b>
Master Bedroom	4.40 x 2.83	14'5" x 9'4"
Bedroom 2	3.28 x 2.78	10'9" x 9'2"
Living Room	5.36 x 3.66	17'7" x 12'0"
Kitchen	3.49 x 2.43	11'6" x 8'0"
Bathroom	2.20 x 2.00	7'3" x 6'7"
En-Suite	2.20 x 1.50	7'3" x 4'11"
Winter Garden 1	5.80 x 1.37	19'0" x 4'6"
Winter Garden 2	3.40 x 1.25	11'2" x 4'1"

**59**

<b>Total Internal Area</b>	<b>51.0m<sup>2</sup></b>	<b>549.0ft<sup>2</sup></b>
<b>Total External Area</b>	<b>10.4m<sup>2</sup></b>	<b>111.9ft<sup>2</sup></b>
Master Bedroom	3.48 x 3.31	11'5" x 10'10"
Living Room	4.16 x 3.68	13'8" x 12'1"
Kitchen	2.56 x 2.00	8'5" x 6'7"
Bathroom	2.20 x 2.00	7'3" x 6'7"
Terrace	7.10 x 1.47	23'4" x 4'10"

**60**

<b>Total Internal Area</b>	<b>79.2m<sup>2</sup></b>	<b>852.5ft<sup>2</sup></b>
<b>Total External Area</b>	<b>8.3m<sup>2</sup></b>	<b>89.3ft<sup>2</sup></b>
Master Bedroom	3.74 x 3.19	12'3" x 10'6"
Bedroom 2	4.00 x 2.84	13'1" x 9'4"
Living Room/Kitchen	5.59 x 4.91	18'4" x 16'1"
Bathroom	2.68 x 2.10	8'9" x 6'11"
En-Suite	2.24 x 1.81	7'4" x 5'11"
Winter Garden	6.22 x 1.36	20'5" x 4'6"

**61**

<b>Total Internal Area</b>	<b>77.1m<sup>2</sup></b>	<b>829.9ft<sup>2</sup></b>
<b>Total External Area</b>	<b>5.8m<sup>2</sup></b>	<b>62.4ft<sup>2</sup></b>
Master Bedroom	3.31 x 3.21	10'10" x 10'6"
Bedroom 2	4.39 x 2.73	14'5" x 9'0"
Living Room/Kitchen	6.11 x 3.75	20'0" x 12'4"
Bathroom	2.20 x 2.00	7'3" x 6'7"
En-Suite	2.20 x 2.00	7'3" x 6'7"
Terrace	3.18 x 1.86	10'5" x 6'1"

**62**

<b>Total Internal Area</b>	<b>70.7m<sup>2</sup></b>	<b>761.0ft<sup>2</sup></b>
<b>Total External Area</b>	<b>6.2m<sup>2</sup></b>	<b>66.7ft<sup>2</sup></b>
Master Bedroom	6.14 x 2.76	20'2" x 9'1"
Bedroom 2	4.80 x 2.75	15'9" x 9'0"
Living Room	3.93 x 4.08	12'11" x 13'4"
Kitchen	3.91 x 1.96	12'10" x 6'5"
Bathroom	2.20 x 2.00	7'3" x 6'7"
En-Suite	2.20 x 1.67	7'3" x 5'6"
Terrace	3.28 x 1.91	10'9" x 6'3"

**63**

<b>Total Internal Area</b>	<b>89.6m<sup>2</sup></b>	<b>964.4ft<sup>2</sup></b>
<b>Total External Area</b>	<b>9.0m<sup>2</sup></b>	<b>96.8ft<sup>2</sup></b>
Master Bedroom	3.39 x 3.65	11'1" x 12'0"
Bedroom 2	4.44 x 2.75	14'7" x 9'0"
Bedroom 3	3.42 x 3.14	11'3" x 10'4"
Living Room	4.88 x 3.54	16'0" x 11'7"
Kitchen	3.34 x 2.89	11'0" x 9'6"
Bathroom	2.20 x 2.00	7'3" x 6'7"
En-Suite	2.20 x 1.80	7'3" x 5'11"
Winter Garden 1	3.40 x 1.25	11'2" x 4'1"
Winter Garden 2	3.40 x 1.25	11'2" x 4'1"

**64**

<b>Total Internal Area</b>	<b>50.7m<sup>2</sup></b>	<b>545.7ft<sup>2</sup></b>
<b>Total External Area</b>	<b>4.5m<sup>2</sup></b>	<b>48.4ft<sup>2</sup></b>
Master Bedroom	4.00 x 3.35	13'1" x 11'0"
Living Room	4.09 x 4.08	13'5" x 13'5"
Kitchen	2.88 x 2.41	9'6" x 7'11"
Bathroom	2.20 x 2.00	7'3" x 6'7"
Winter Garden	3.40 x 1.25	11'2" x 4'1"

**65**

<b>Total Internal Area</b>	<b>50.7m<sup>2</sup></b>	<b>545.7ft<sup>2</sup></b>
<b>Total External Area</b>	<b>4.5m<sup>2</sup></b>	<b>48.4ft<sup>2</sup></b>
Master Bedroom	4.00 x 3.35	13'1" x 11'0"
Living Room	4.09 x 4.08	13'5" x 13'5"
Kitchen	2.88 x 2.41	9'6" x 7'11"
Bathroom	2.20 x 2.00	7'3" x 6'7"
Winter Garden	3.40 x 1.25	11'2" x 4'1"

**66**

<b>Total Internal Area</b>	<b>81.0m<sup>2</sup></b>	<b>871.9ft<sup>2</sup></b>
<b>Total External Area</b>	<b>6.1m<sup>2</sup></b>	<b>65.7ft<sup>2</sup></b>
Master Bedroom	6.42 x 3.25	21'1" x 10'8"
Bedroom 2	3.22 x 2.90	9'6" x 10'7"
Living Room	4.33 x 3.21	14'3" x 10'6"
Kitchen	3.51 x 2.10	11'6" x 6'11"
Shower Room	2.20 x 2.01	7'3" x 6'7"
En-Suite	3.00 x 2.63	9'10" x 8'8"
Terrace	2.90 x 2.09	9'6" x 6'10"

**67**

<b>Total Internal Area</b>	<b>50.1m<sup>2</sup></b>	<b>539.3ft<sup>2</sup></b>
<b>Total External Area</b>	<b>6.1m<sup>2</sup></b>	<b>65.7ft<sup>2</sup></b>
Master Bedroom	4.20 x 4.14	13'9" x 13'7"
Living Room	4.42 x 3.64	14'6" x 11'11"
Kitchen	3.35 x 2.30	11'0" x 7'7"
Bathroom	2.20 x 2.00	7'3" x 6'7"
Terrace	3.99 x 1.55	13'1" x 5'1"

**68**

<b>Total Internal Area</b>	<b>85.9m<sup>2</sup></b>	<b>924.6ft<sup>2</sup></b>
<b>Total External Area</b>	<b>7.2m<sup>2</sup></b>	<b>77.5ft<sup>2</sup></b>
Master Bedroom	4.44 x 2.95	14'7" x 9'8"
Bedroom 2	3.34 x 2.77	10'11" x 9'1"
Bedroom 3	3.34 x 2.75	10'11" x 9'0"
Living Room	4.60 x 3.49	15'1" x 12'2"
Kitchen	4.60 x 2.62	15'1" x 8'7"
Bathroom	2.20 x 2.20	7'3" x 7'3"
En-Suite	2.95 x 2.00	9'8" x 6'7"
Terrace	2.89 x 2.50	9'6" x 8'2"

**69**

<b>Total Internal Area</b>	<b>84.8m<sup>2</sup></b>	<b>912.8ft<sup>2</sup></b>
<b>Total External Area</b>	<b>7.2m<sup>2</sup></b>	<b>77.5ft<sup>2</sup></b>
Master Bedroom	4.25 x 3.20	13'11" x 10'6"
Bedroom 2	4.25 x 2.75	13'11" x 9'0"
Bedroom 3	3.35 x 2.75	11'0" x 9'0"
Living Room	4.30 x 4.06	14'1" x 13'4"
Kitchen	3.35 x 2.45	11'0" x 8'0"
Bathroom	2.20 x 2.00	7'3" x 6'7"
En-Suite	2.20 x 1.60	7'3" x 5'3"
Terrace	2.89 x 2.50	9'6" x 8'2"

**70**

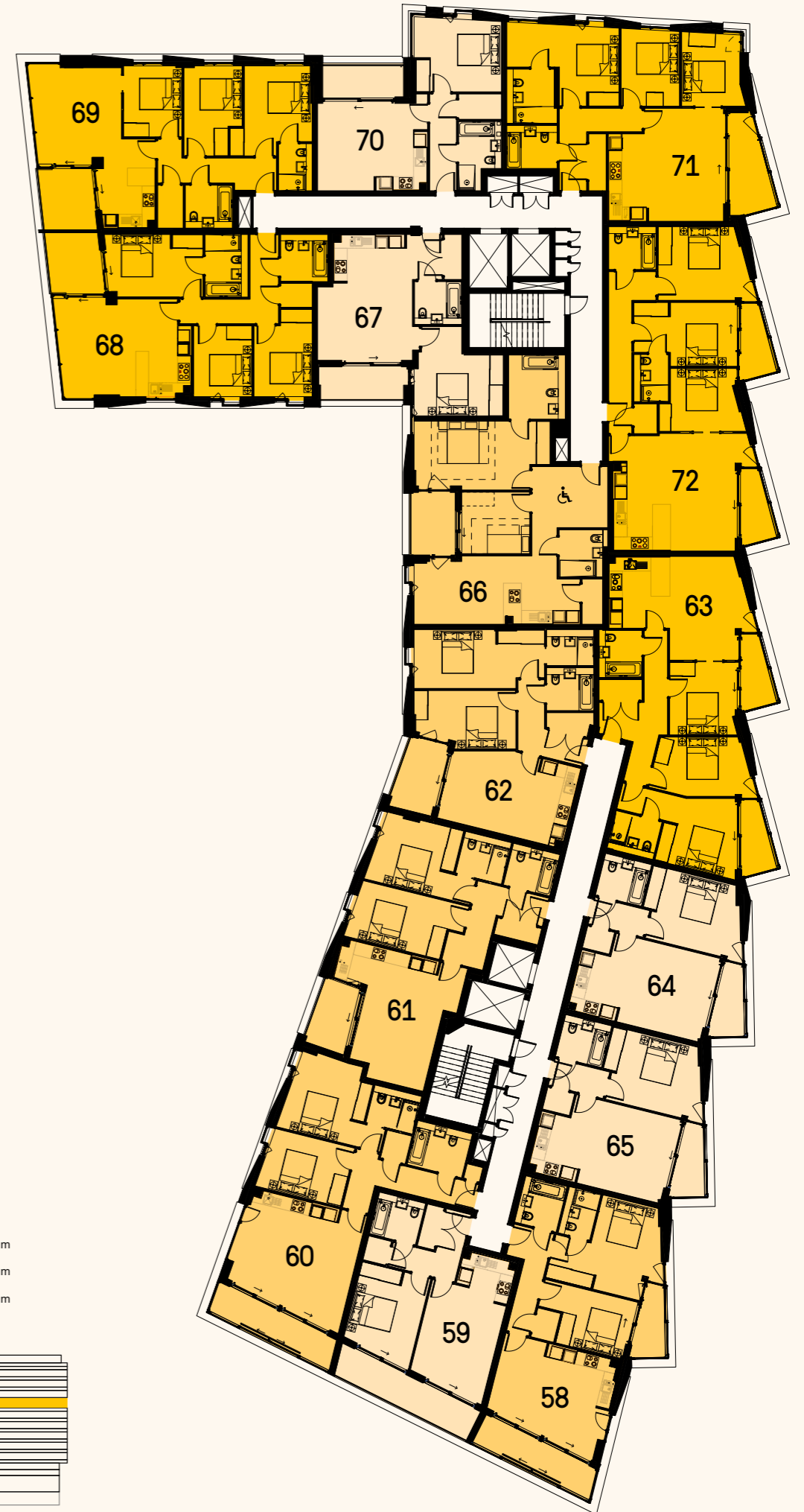
<b>Total Internal Area</b>	<b>50.7m<sup>2</sup></b>	<b>545.7ft<sup>2</sup></b>
<b>Total External Area</b>	<b>5.2m<sup>2</sup></b>	<b>56.0ft<sup>2</sup></b>
Master Bedroom	4.11 x 3.44	13'6" x 11'3"
Living Room/Kitchen	5.14 x 4.11	16'11" x 13'6"
Bathroom	2.20 x 2.00	7'3" x 6'7"
Terrace	3.80 x 1.39	12'6" x 4'7"

**71**

<b>Total Internal Area</b>	<b>87.0m<sup>2</sup></b>	<b>936.5ft<sup>2</sup></b>
<b>Total External Area</b>	<b>7.7m<sup>2</sup></b>	<b>82.9ft<sup>2</sup></b>
Master Bedroom	5.30 x 3.76	17'5" x 12'4"
Bedroom 2	3.60 x 2.75	11'10" x 9'0"
Bedroom 3	3.40 x 2.75	11'2" x 9'0"
Living Room	5.31 x 3.60	17'5" x 11'10"
Kitchen	4.10 x 1.90	13'6" x 6'3"
Bathroom	2.35 x 2.00	7'8" x 6'7"
En-Suite	2.55 x 2.19	8'4" x 7'2"
Winter Garden	4.74 x 1.65	15'6" x 5'5"

**72**

<b>Total Internal Area</b>	<b>94.0m<sup>2</sup></b>	<b>1011.8ft<sup>2</sup></b>
<b>Total External Area</b>	<b>9.0m<sup>2</sup></b>	<b>96.8ft<sup>2</sup></b>
Master Bedroom	4.82 x 3.05	15'10" x 10'0"
Bedroom 2	4.13 x 3.42	13'7" x 11'2"
Bedroom 3	3.95 x 2.96	12'11" x 9'9"
Living Room	5.53 x 3.11	18'2" x 10'2"
Kitchen	4.12 x 2.70	13'6" x 8'10"
Bathroom	2.20 x 2.00	7'3" x 6'7"
En-Suite	2.24 x 1.60	7'4" x 5'3"
Winter Garden 1	3.40 x 1.25	11'2" x 4'1"
Winter Garden 2	3.40 x 1.25	11'2" x 4'1"



3 Bedroom  
 2 Bedroom  
 1 Bedroom



For Disclaimers please see Plans on divider.  
Total Internal Area excludes Winter Gardens and / or Terraces.



# 8<sup>TH</sup> FLOOR

**73**

<b>Total Internal Area</b>	<b>70.8m<sup>2</sup></b>	<b>762.1ft<sup>2</sup></b>
<b>Total External Area</b>	<b>12.6m<sup>2</sup></b>	<b>135.3ft<sup>2</sup></b>
Master Bedroom	4.40 x 2.83	14'5" x 9'4"
Bedroom 2	3.28 x 2.78	10'9" x 9'2"
Living Room	5.36 x 3.66	17'7" x 12'0"
Kitchen	3.49 x 2.43	11'6" x 8'00"
Bathroom	2.20 x 2.00	7'3" x 6'7"
En-Suite	2.20 x 1.50	7'3" x 4'11"
Winter Garden 1	5.80 x 1.37	19'0" x 4'6"
Winter Garden 2	3.40 x 1.25	11'2" x 4'1"

**76**

<b>Total Internal Area</b>	<b>77.1m<sup>2</sup></b>	<b>829.9ft<sup>2</sup></b>
<b>Total External Area</b>	<b>5.8m<sup>2</sup></b>	<b>62.4ft<sup>2</sup></b>
Master Bedroom	3.31 x 3.21	10'10" x 10'6"
Bedroom 2	4.39 x 2.73	14'5" x 9'0"
Living Room/Kitchen	6.11 x 3.75	20'0" x 12'4"
Bathroom	2.20 x 2.00	7'3" x 6'7"
En-Suite	2.20 x 2.00	7'3" x 6'7"
Terrace	3.18 x 1.86	10'5" x 6'1"

**79**

<b>Total Internal Area</b>	<b>50.7m<sup>2</sup></b>	<b>545.7ft<sup>2</sup></b>
<b>Total External Area</b>	<b>4.5m<sup>2</sup></b>	<b>48.4ft<sup>2</sup></b>
Master Bedroom	4.00 x 3.35	13'1" x 11'0"
Living Room	4.09 x 4.08	13'5" x 13'5"
Kitchen	2.88 x 2.41	9'6" x 7'11"
Bathroom	2.20 x 2.00	7'3" x 6'7"
Winter Garden	3.40 x 1.25	11'2" x 4'1"

**82**

<b>Total Internal Area</b>	<b>50.1m<sup>2</sup></b>	<b>539.3ft<sup>2</sup></b>
<b>Total External Area</b>	<b>6.1m<sup>2</sup></b>	<b>65.7ft<sup>2</sup></b>
Master Bedroom	4.20 x 4.14	13'9" x 13'7"
Living Room	4.42 x 3.64	14'6" x 11'11"
Kitchen	3.35 x 2.30	11'0" x 7'7"
Bathroom	2.20 x 2.00	7'3" x 6'7"
Terrace	3.99 x 1.55	13'1" x 5'1"

**85**

<b>Total Internal Area</b>	<b>50.7m<sup>2</sup></b>	<b>542.5ft<sup>2</sup></b>
<b>Total External Area</b>	<b>5.2m<sup>2</sup></b>	<b>56.0ft<sup>2</sup></b>
Master Bedroom	4.11 x 3.44	13'6" x 11'3"
Living Room/Kitchen	5.14 x 4.11	16'11" x 13'6"
Bathroom	2.20 x 2.00	7'3" x 6'7"
Terrace	3.80 x 1.39	12'6" x 4'7"

**74**

<b>Total Internal Area</b>	<b>51.0m<sup>2</sup></b>	<b>549.0ft<sup>2</sup></b>
<b>Total External Area</b>	<b>10.4m<sup>2</sup></b>	<b>111.9ft<sup>2</sup></b>
Master Bedroom	3.48 x 3.31	11'5" x 10'10"
Living Room	4.16 x 3.68	13'8" x 12'1"
Kitchen	2.56 x 2.00	8'5" x 6'7"
Bathroom	2.20 x 2.00	7'3" x 6'7"
Terrace	7.10 x 1.47	23'4" x 4'10"

**77**

<b>Total Internal Area</b>	<b>70.7m<sup>2</sup></b>	<b>761.0ft<sup>2</sup></b>
<b>Total External Area</b>	<b>6.2m<sup>2</sup></b>	<b>66.7ft<sup>2</sup></b>
Master Bedroom	6.14 x 2.76	20'2" x 9'1"
Bedroom 2	4.80 x 2.75	15'9" x 9'0"
Living Room	3.93 x 4.08	12'11" x 13'4"
Kitchen	3.91 x 1.96	12'10" x 6'5"
Bathroom	2.20 x 2.00	7'3" x 6'7"
En-Suite	2.20 x 1.67	7'3" x 5'6"
Terrace	3.28 x 1.91	10'9" x 6'3"

**80**

<b>Total Internal Area</b>	<b>50.7m<sup>2</sup></b>	<b>545.7ft<sup>2</sup></b>
<b>Total External Area</b>	<b>4.5m<sup>2</sup></b>	<b>48.4ft<sup>2</sup></b>
Master Bedroom	4.00 x 3.35	13'1" x 11'0"
Living Room	4.09 x 4.08	13'5" x 13'5"
Kitchen	2.88 x 2.41	9'6" x 7'11"
Bathroom	2.20 x 2.00	7'3" x 6'7"
Winter Garden	3.40 x 1.25	11'2" x 4'1"

**83**

<b>Total Internal Area</b>	<b>85.9m<sup>2</sup></b>	<b>924.6ft<sup>2</sup></b>
<b>Total External Area</b>	<b>7.2m<sup>2</sup></b>	<b>77.5ft<sup>2</sup></b>
Master Bedroom	4.44 x 2.95	14'7" x 9'8"
Bedroom 2	3.34 x 2.77	10'11" x 9'1"
Bedroom 3	3.34 x 2.75	10'11" x 9'0"
Living Room	4.60 x 3.49	15'1" x 12'2"
Kitchen	4.60 x 2.62	15'1" x 8'7"
Bathroom	2.20 x 2.20	7'3" x 7'3"
En-Suite	2.95 x 2.00	9'8" x 6'7"
Terrace	2.89 x 2.50	9'6" x 8'2"

**86**

<b>Total Internal Area</b>	<b>87.0m<sup>2</sup></b>	<b>936.5ft<sup>2</sup></b>
<b>Total External Area</b>	<b>7.6m<sup>2</sup></b>	<b>81.8ft<sup>2</sup></b>
Master Bedroom	5.30 x 3.76	17'5" x 12'4"
Bedroom 2	3.60 x 2.75	11'10" x 9'0"
Bedroom 3	3.40 x 2.75	11'2" x 9'0"
Living Room	5.31 x 3.60	17'5" x 11'10"
Kitchen	4.10 x 1.90	13'6" x 6'3"
Bathroom	2.35 x 2.00	7'8" x 6'7"
En-Suite	2.55 x 2.19	8'4" x 7'2"
Winter Garden	4.74 x 1.65	15'6" x 5'5"

**75**

<b>Total Internal Area</b>	<b>79.2m<sup>2</sup></b>	<b>852.5ft<sup>2</sup></b>
<b>Total External Area</b>	<b>8.3m<sup>2</sup></b>	<b>89.3ft<sup>2</sup></b>
Master Bedroom	3.74 x 3.19	12'3" x 10'6"
Bedroom 2	4.00 x 2.84	13'1" x 9'4"
Living Room/Kitchen	5.59 x 4.91	18'4" x 16'1"
Bathroom	2.68 x 2.10	8'9" x 6'11"
En-Suite	2.24 x 1.81	7'4" x 5'11"
Winter Garden	6.22 x 1.36	20'5" x 4'6"

**78**

<b>Total Internal Area</b>	<b>89.6m<sup>2</sup></b>	<b>964.4ft<sup>2</sup></b>
<b>Total External Area</b>	<b>9.0m<sup>2</sup></b>	<b>96.8ft<sup>2</sup></b>
Master Bedroom	3.39 x 3.65	11'1" x 12'0"
Bedroom 2	4.44 x 2.75	14'7" x 9'0"
Bedroom 3	3.42 x 3.14	11'3" x 10'4"
Living Room	4.88 x 3.54	16'0" x 11'7"
Kitchen	3.34 x 2.89	11'0" x 9'6"
Bathroom	2.20 x 2.00	7'3" x 6'7"
En-Suite	2.20 x 1.80	7'3" x 5'11"
Winter Garden 1	3.40 x 1.25	11'2" x 4'1"
Winter Garden 2	3.40 x 1.25	11'2" x 4'1"

**81**

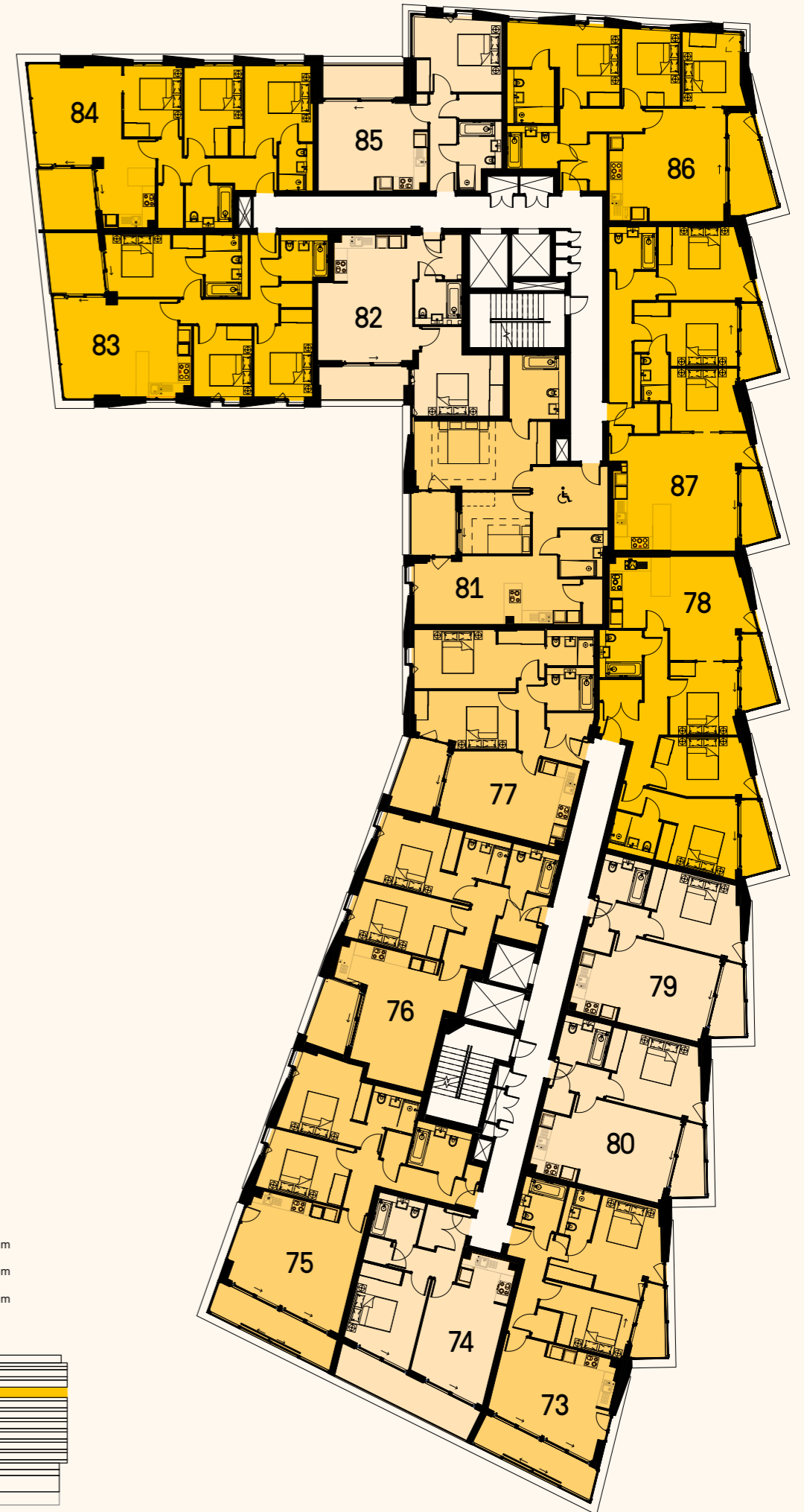
<b>Total Internal Area</b>	<b>81.0m<sup>2</sup></b>	<b>871.9ft<sup>2</sup></b>
<b>Total External Area</b>	<b>6.1m<sup>2</sup></b>	<b>65.7ft<sup>2</sup></b>
Master Bedroom	6.42 x 3.25	21'1" x 10'8"
Bedroom 2	3.22 x 2.90	9'6" x 10'7"
Living Room	4.33 x 3.21	14'3" x 10'6"
Kitchen	3.51 x 2.10	11'6" x 6'11"
Shower Room	2.20 x 2.01	7'3" x 6'7"
En-Suite	3.00 x 2.63	9'10" x 8'8"
Terrace	2.90 x 2.09	9'6" x 6'10"

**84**

<b>Total Internal Area</b>	<b>84.8m<sup>2</sup></b>	<b>912.8ft<sup>2</sup></b>
<b>Total External Area</b>	<b>7.2m<sup>2</sup></b>	<b>77.5ft<sup>2</sup></b>
Master Bedroom	4.25 x 3.20	13'11" x 10'6"
Bedroom 2	4.25 x 2.75	13'11" x 9'0"
Bedroom 3	3.35 x 2.75	11'0" x 9'0"
Living Room	4.30 x 4.06	14'1" x 13'4"
Kitchen	3.35 x 2.45	11'0" x 8'0"
Bathroom	2.20 x 2.00	7'3" x 6'7"
En-Suite	2.20 x 1.60	7'3" x 5'3"
Terrace	2.89 x 2.50	9'6" x 8'2"

**87**

<b>Total Internal Area</b>	<b>94.0m<sup>2</sup></b>	<b>1011.8ft<sup>2</sup></b>
<b>Total External Area</b>	<b>9.0m<sup>2</sup></b>	<b>96.8ft<sup>2</sup></b>
Master Bedroom	4.82 x 3.05	15'10" x 10'0"
Bedroom 2	4.13 x 3.42	13'7" x 11'2"
Bedroom 3	3.95 x 2.96	12'11" x 9'9"
Living Room	5.53 x 3.11	18'2" x 10'2"
Kitchen	4.12 x 2.70	13'6" x 8'10"
Bathroom	2.20 x 2.00	7'3" x 6'7"
En-Suite	2.24 x 1.60	7'4" x 5'3"
Winter Garden 1	3.40 x 1.25	11'2" x 4'1"
Winter Garden 2	3.40 x 1.25	11'2" x 4'1"



**N**

- 3 Bedroom
- 2 Bedroom
- 1 Bedroom



For Disclaimers please see Plans on divider.  
Total Internal Area excludes Winter Gardens and / or Terraces.



# 9<sup>TH</sup> FLOOR

**88**

<b>Total Internal Area</b>	<b>70.8m<sup>2</sup></b>	<b>762.1ft<sup>2</sup></b>
<b>Total External Area</b>	<b>12.6m<sup>2</sup></b>	<b>135.3ft<sup>2</sup></b>
Master Bedroom	4.40 x 2.83	14'5" x 9'4"
Bedroom 2	3.28 x 2.78	10'9" x 9'2"
Living Room	5.36 x 3.66	17'7" x 12'0"
Kitchen	3.49 x 2.43	11'6" x 8'0"
Bathroom	2.20 x 2.00	7'3" x 6'7"
En-Suite	2.20 x 1.50	7'3" x 4'11"
Winter Garden 1	5.80 x 1.37	19'0" x 4'6"
Winter Garden 2	3.40 x 1.25	11'2" x 4'1"

**91**

<b>Total Internal Area</b>	<b>77.1m<sup>2</sup></b>	<b>829.9ft<sup>2</sup></b>
<b>Total External Area</b>	<b>5.8m<sup>2</sup></b>	<b>62.4ft<sup>2</sup></b>
Master Bedroom	3.31 x 3.21	10'10" x 10'6"
Bedroom 2	4.39 x 2.73	14'5" x 9'0"
Living Room/Kitchen	6.11 x 3.75	20'0" x 12'4"
Bathroom	2.20 x 2.00	7'3" x 6'7"
En-Suite	2.20 x 2.00	7'3" x 6'7"
Terrace	3.18 x 1.86	10'5" x 6'1"

**94**

<b>Total Internal Area</b>	<b>103.3m<sup>2</sup></b>	<b>1111.9ft<sup>2</sup></b>
<b>Total External Area</b>	<b>9.0m<sup>2</sup></b>	<b>96.8ft<sup>2</sup></b>
Master Bedroom	5.22 x 2.90	17'2" x 9'6"
Bedroom 2	4.60 x 3.38	15'1" x 11'1"
Bedroom 3	3.55 x 3.29	11'8" x 10'9"
Kitchen	3.85 x 2.91	12'8" x 9'7"
Living Room	5.24 x 3.60	17'2" x 11'10"
Bathroom	2.20 x 2.01	7'3" x 6'7"
En-Suite	2.20 x 1.80	7'3" x 5'11"
Winter Garden 1	3.40 x 1.25	11'2" x 4'1"
Winter Garden 2	3.40 x 1.25	11'2" x 4'1"

**97**

<b>Total Internal Area</b>	<b>72.0m<sup>2</sup></b>	<b>775.0ft<sup>2</sup></b>
<b>Total External Area</b>	<b>5.9m<sup>2</sup></b>	<b>58.1ft<sup>2</sup></b>
Master Bedroom	3.83 x 3.46	12'7" x 11'4"
Bedroom 2	3.65 x 2.73	11'11" x 9'0"
Living Room	4.42 x 3.83	14'6" x 12'7"
Kitchen	3.53 x 2.10	11'7" x 6'10"
Bathroom	2.20 x 2.00	7'3" x 6'7"
En-Suite	2.20 x 1.60	7'3" x 5'3"
Winter Garden	4.60 x 1.24	15'1" x 4'1"

**89**

<b>Total Internal Area</b>	<b>51.0m<sup>2</sup></b>	<b>549.0ft<sup>2</sup></b>
<b>Total External Area</b>	<b>10.4m<sup>2</sup></b>	<b>111.9ft<sup>2</sup></b>
Master Bedroom	3.48 x 3.31	11'5" x 10'10"
Living Room	4.16 x 3.68	13'8" x 12'1"
Kitchen	2.56 x 2.00	8'5" x 6'7"
Bathroom	2.20 x 2.00	7'3" x 6'7"
Terrace	7.10 x 1.47	23'4" x 4'10"

**92**

<b>Total Internal Area</b>	<b>94.4m<sup>2</sup></b>	<b>1016.1ft<sup>2</sup></b>
<b>Total External Area</b>	<b>6.2m<sup>2</sup></b>	<b>66.7ft<sup>2</sup></b>
Master Bedroom	6.78 x 2.78	22'3" x 9'1"
Bedroom 2	4.69 x 2.75	15'5" x 9'0"
Bedroom 3	4.69 x 2.75	15'5" x 9'0"
Kitchen	4.01 x 2.06	13'2" x 6'9"
Living Room	3.97 x 3.55	13'0" x 11'8"
Bathroom	2.34 x 2.00	7'8" x 6'7"
En-Suite	3.04 x 2.00	10'0" x 6'7"
Terrace	3.28 x 1.91	10'9" x 6'3"

**95**

<b>Total Internal Area</b>	<b>76.6m<sup>2</sup></b>	<b>781.4ft<sup>2</sup></b>
<b>Total External Area</b>	<b>6.0m<sup>2</sup></b>	<b>64.6ft<sup>2</sup></b>
Master Bedroom	5.00 x 3.01	16'5" x 9'11"
Bedroom 2	3.84 x 3.41	12'7" x 11'2"
Kitchen	4.20 x 1.71	13'9" x 5'7"
Living Room	5.17 x 4.18	16'11" x 13'9"
Bathroom	2.20 x 2.00	7'3" x 6'7"
En-Suite	2.24 x 2.00	7'4" x 6'7"
Terrace	2.90 x 2.09	9'6" x 6'10"

**98**

<b>Total Internal Area</b>	<b>94.0m<sup>2</sup></b>	<b>1011.8ft<sup>2</sup></b>
<b>Total External Area</b>	<b>9.0m<sup>2</sup></b>	<b>96.8ft<sup>2</sup></b>
Master Bedroom	4.82 x 3.05	15'10" x 10'0"
Bedroom 2	4.13 x 3.42	13'7" x 11'2"
Bedroom 3	3.95 x 2.96	12'11" x 9'9"
Living Room	5.53 x 3.11	18'2" x 10'2"
Kitchen	4.12 x 2.70	13'6" x 8'10"
Bathroom	2.20 x 2.00	7'3" x 6'7"
En-Suite	2.24 x 1.60	7'4" x 5'3"
Winter Garden 1	3.40 x 1.25	11'2" x 4'1"
Winter Garden 2	3.40 x 1.25	11'2" x 4'1"

**90**

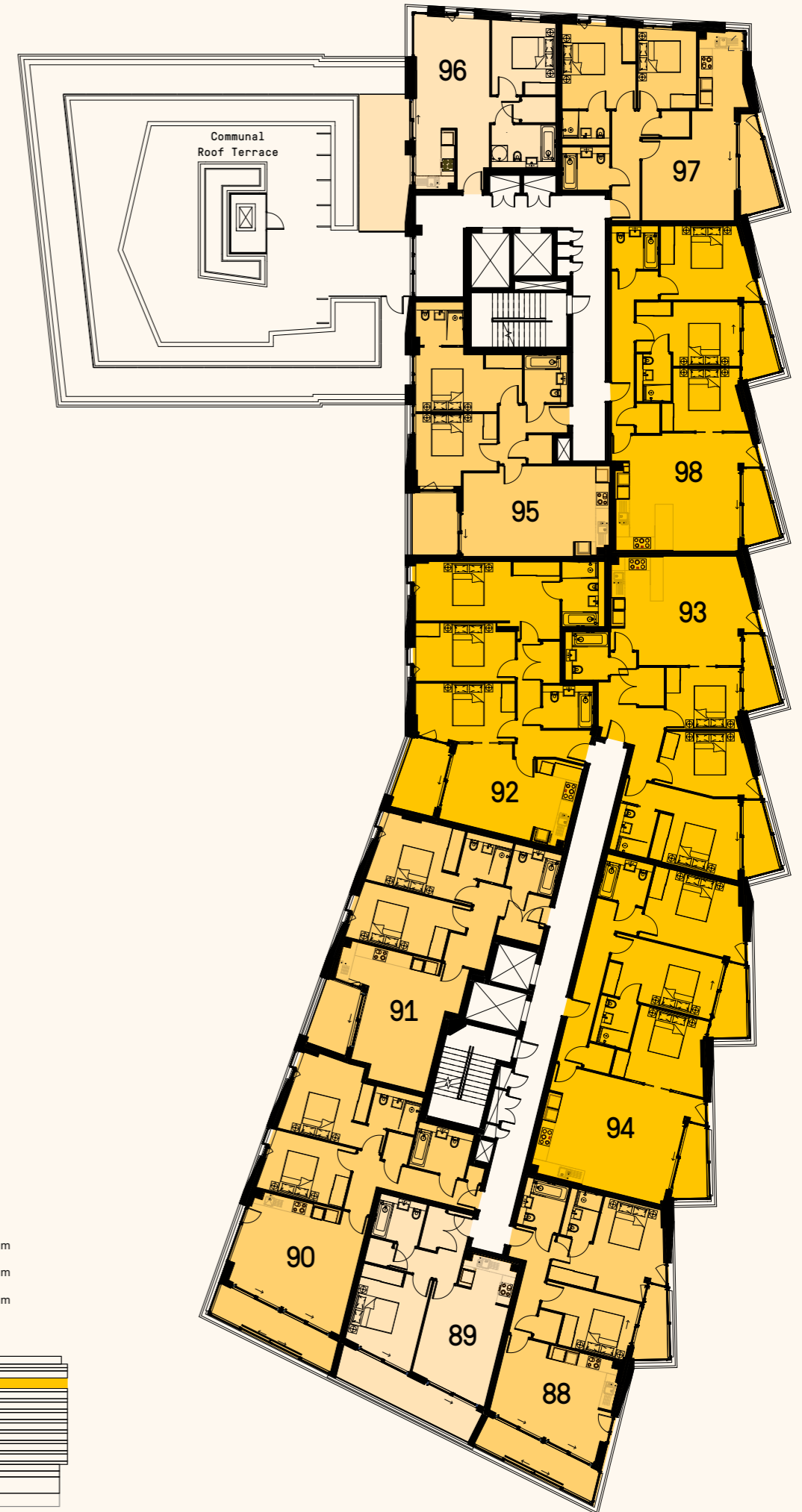
<b>Total Internal Area</b>	<b>79.2m<sup>2</sup></b>	<b>852.5ft<sup>2</sup></b>
<b>Total External Area</b>	<b>8.3m<sup>2</sup></b>	<b>89.3ft<sup>2</sup></b>
Master Bedroom	3.74 x 3.19	12'3" x 10'6"
Bedroom 2	4.00 x 2.84	13'1" x 9'4"
Living Room/Kitchen	5.59 x 4.91	18'4" x 16'1"
Bathroom	2.68 x 2.10	8'9" x 6'11"
En-Suite	2.24 x 1.81	7'4" x 5'11"
Winter Garden	6.22 x 1.36	20'5" x 4'6"

**93**

<b>Total Internal Area</b>	<b>94.0m<sup>2</sup></b>	<b>1011.8ft<sup>2</sup></b>
<b>Total External Area</b>	<b>9.0m<sup>2</sup></b>	<b>96.8ft<sup>2</sup></b>
Master Bedroom	3.44 x 3.95	11'3" x 12'11"
Bedroom 2	4.10 x 3.08	13'5" x 10'1"
Bedroom 3	3.41 x 2.91	11'2" x 9'7"
Living Room	5.11 x 4.00	16'9" x 13'2"
Kitchen	3.37 x 2.46	11'1" x 8'1"
Bathroom	2.22 x 2.00	7'4" x 6'7"
En-Suite	2.20 x 1.80	7'3" x 5'10"
Winter Garden 1	3.40 x 1.25	11'2" x 4'1"
Winter Garden 2	3.40 x 1.25	11'2" x 4'1"

**96**

<b>Total Internal Area</b>	<b>49.7m<sup>2</sup></b>	<b>535.0ft<sup>2</sup></b>
<b>Total External Area</b>	<b>13.4m<sup>2</sup></b>	<b>144.2ft<sup>2</sup></b>
Master Bedroom	3.01 x 3.36	9'10" x 11'0"
Living Room	5.19 x 3.49	17'0" x 11'5"
Kitchen	2.90 x 1.84	9'6" x 6'0"
Bathroom	3.00 x 2.00	9'10" x 6'7"
Terrace	6.56 x 1.80	21'6" x 5'11"



**N**

- 3 Bedroom
- 2 Bedroom
- 1 Bedroom



For Disclaimers please see Plans on divider.  
Total Internal Area excludes Winter Gardens and / or Terraces.



# 9<sup>TH</sup> FLOOR COMMUNAL ROOF TERRACE





# 10<sup>TH</sup> FLOOR PREMIUM APARTMENTS

**99**

<b>Total Internal Area</b>	70.8m <sup>2</sup>	762.1ft <sup>2</sup>
<b>Total External Area</b>	12.6m <sup>2</sup>	135.3ft <sup>2</sup>
Master Bedroom	4.40 x 2.83	14'5" x 9'4"
Bedroom 2	3.28 x 2.78	10'9" x 9'2"
Living Room	5.36 x 3.66	17'7" x 12'0"
Kitchen	3.49 x 2.43	11'6" x 8'00"
Bathroom	2.20 x 2.00	7'3" x 6'7"
En-Suite	2.20 x 1.50	7'3" x 4'11"
Winter Garden 1	5.80 x 1.37	19'0" x 4'6"
Winter Garden 2	3.40 x 1.25	11'2" x 4'1"

**100**

<b>Total Internal Area</b>	51.0m <sup>2</sup>	549.0ft <sup>2</sup>
<b>Total External Area</b>	10.4m <sup>2</sup>	111.9ft <sup>2</sup>
Master Bedroom	3.48 x 3.31	11'5" x 10'10"
Living Room	4.16 x 3.68	13'8" x 12'11"
Kitchen	2.56 x 2.00	8'5" x 6'7"
Bathroom	2.20 x 2.00	7'3" x 6'7"
Terrace	7.10 x 1.47	23'4" x 4'10"

**101**

<b>Total Internal Area</b>	79.2m <sup>2</sup>	852.5ft <sup>2</sup>
<b>Total External Area</b>	8.3m <sup>2</sup>	89.3ft <sup>2</sup>
Master Bedroom	3.74 x 3.19	12'3" x 10'6"
Bedroom 2	4.00 x 2.84	13'1" x 9'4"
Living Room/Kitchen	5.59 x 4.91	18'4" x 16'1"
Bathroom	2.68 x 2.10	8'9" x 6'11"
En-Suite	2.24 x 1.81	7'4" x 5'11"
Winter Garden	6.22 x 1.36	20'5" x 4'6"

**102**

<b>Total Internal Area</b>	77.1m <sup>2</sup>	829.9ft <sup>2</sup>
<b>Total External Area</b>	5.8m <sup>2</sup>	62.4ft <sup>2</sup>
Master Bedroom	3.31 x 3.21	10'10" x 10'6"
Bedroom 2	4.39 x 2.73	14'5" x 9'0"
Living Room/Kitchen	6.11 x 3.75	20'0" x 12'4"
Bathroom	2.20 x 2.00	7'3" x 6'7"
En-Suite	2.20 x 2.00	7'3" x 6'7"
Terrace	3.18 x 1.86	10'5" x 6'1"

**103**

<b>Total Internal Area</b>	94.4m <sup>2</sup>	1016.1ft <sup>2</sup>
<b>Total External Area</b>	6.2m <sup>2</sup>	66.7ft <sup>2</sup>
Master Bedroom	6.78 x 2.78	22'3" x 9'1"
Bedroom 2	4.69 x 2.75	15'5" x 9'0"
Bedroom 3	4.69 x 2.75	15'5" x 9'0"
Kitchen	4.01 x 2.06	13'2" x 6'9"
Living Room	3.97 x 3.55	13'0" x 11'8"
Bathroom	2.34 x 2.00	7'8" x 6'7"
En-Suite	3.04 x 2.00	10'0" x 6'7"
Terrace	3.28 x 1.91	10'9" x 6'3"

**104**

<b>Total Internal Area</b>	94.0m <sup>2</sup>	1011.8ft <sup>2</sup>
<b>Total External Area</b>	9.0m <sup>2</sup>	96.8ft <sup>2</sup>
Master Bedroom	3.44 x 3.95	11'3" x 12'11"
Bedroom 2	4.10 x 3.08	13'5" x 10'1"
Bedroom 3	3.41 x 2.91	11'2" x 9'7"
Living Room	5.11 x 4.00	16'9" x 13'2"
Kitchen	3.37 x 2.46	11'1" x 8'1"
Bathroom	2.22 x 2.00	7'4" x 6'7"
En-Suite	2.20 x 1.80	7'3" x 5'10"
Winter Garden 1	3.40 x 1.25	11'2" x 4'1"
Winter Garden 2	3.40 x 1.25	11'2" x 4'1"

**105**

<b>Total Internal Area</b>	103.3m <sup>2</sup>	1111.9ft <sup>2</sup>
<b>Total External Area</b>	9.0m <sup>2</sup>	96.8ft <sup>2</sup>
Master Bedroom	5.22 x 2.90	17'2" x 9'6"
Bedroom 2	4.60 x 3.38	15'1" x 11'1"
Bedroom 3	3.55 x 3.29	11'8" x 10'9"
Kitchen	3.85 x 2.91	12'8" x 9'7"
Living Room	5.24 x 3.60	17'2" x 11'10"
Bathroom	2.20 x 2.01	7'3" x 6'7"
En-Suite	2.20 x 1.80	7'3" x 5'11"
Winter Garden 1	3.40 x 1.25	11'2" x 4'1"
Winter Garden 2	3.40 x 1.25	11'2" x 4'1"

**106**

<b>Total Internal Area</b>	75.6m <sup>2</sup>	780.4ft <sup>2</sup>
<b>Total External Area</b>	6.0m <sup>2</sup>	64.6ft <sup>2</sup>
Master Bedroom	5.00 x 3.01	16'5" x 9'11"
Bedroom 2	3.84 x 3.41	12'7" x 11'2"
Kitchen	4.20 x 1.71	13'9" x 5'7"
Living Room	5.17 x 4.18	16'11" x 13'9"
Bathroom	2.20 x 2.00	7'3" x 6'7"
En-Suite	2.24 x 2.00	7'4" x 6'7"
Terrace	2.90 x 2.09	9'6" x 6'10"

**107**

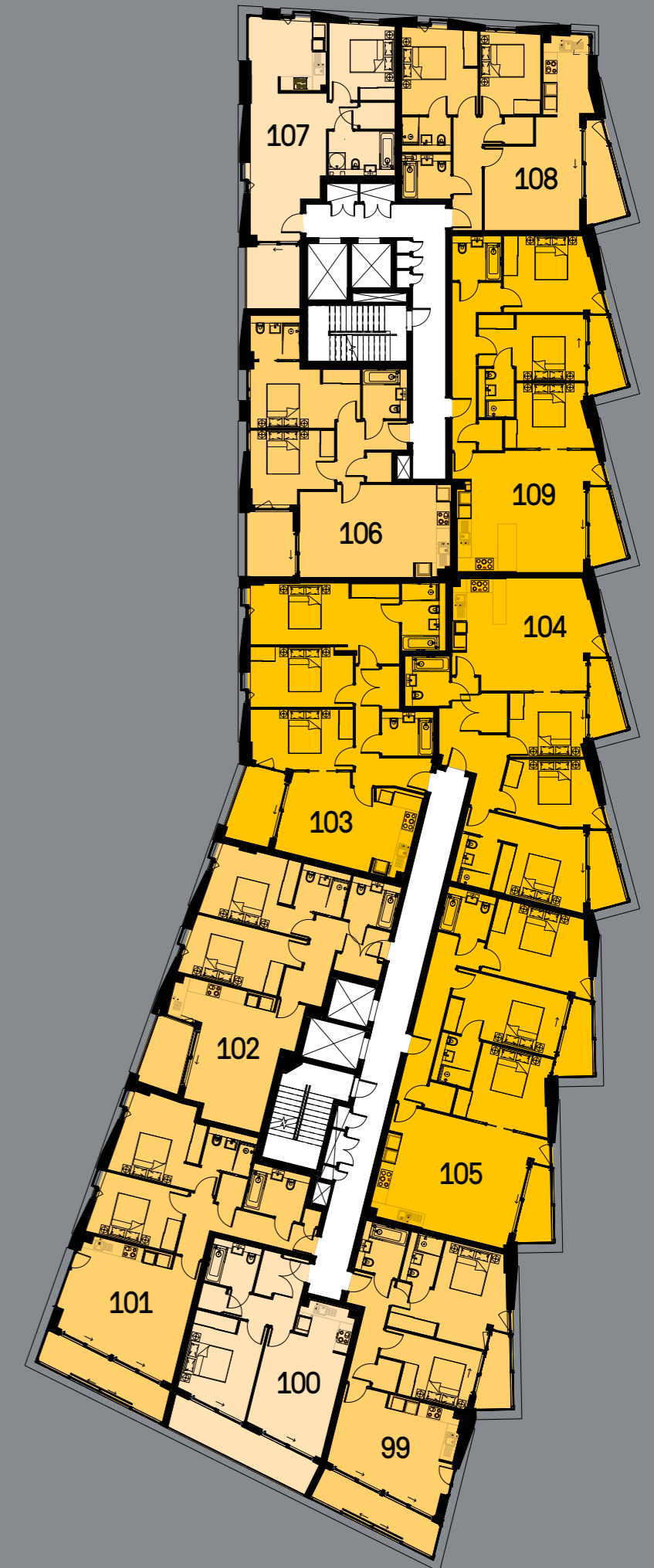
<b>Total Internal Area</b>	53.9m <sup>2</sup>	580.2ft <sup>2</sup>
<b>Total External Area</b>	6.7m <sup>2</sup>	72.1ft <sup>2</sup>
Master Bedroom	2.99 x 3.40	9'10" x 11'2"
Living Room	6.67 x 3.46	21'10" x 11'4"
Kitchen	3.09 x 2.22	10'2" x 7'3"
Bathroom	3.00 x 2.00	9'10" x 6'7"
Terrace	2.80 x 2.40	9'2" x 7'11"

**108**

<b>Total Internal Area</b>	72.0m <sup>2</sup>	775.0ft <sup>2</sup>
<b>Total External Area</b>	5.9m <sup>2</sup>	58.1ft <sup>2</sup>
Master Bedroom	3.83 x 3.46	12'7" x 11'4"
Bedroom 2	3.65 x 2.73	11'11" x 9'0"
Living Room	4.42 x 3.83	14'6" x 12'7"
Kitchen	3.53 x 2.10	11'7" x 6'10"
Bathroom	2.20 x 2.00	7'3" x 6'7"
En-Suite	2.20 x 1.60	7'3" x 5'3"
Winter Garden	4.60 x 1.24	15'1" x 4'1"

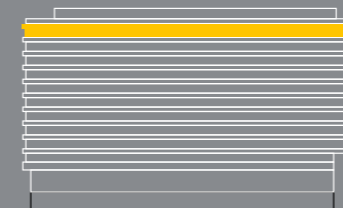
**109**

<b>Total Internal Area</b>	94.0m <sup>2</sup>	1011.8ft <sup>2</sup>
<b>Total External Area</b>	9.0m <sup>2</sup>	96.8ft <sup>2</sup>
Master Bedroom	4.82 x 3.05	15'10" x 10'0"
Bedroom 2	4.13 x 3.42	13'7" x 11'2"
Bedroom 3	3.95 x 2.96	12'11" x 9'9"
Living Room	5.53 x 3.11	18'2" x 10'2"
Kitchen	4.12 x 2.70	13'6" x 8'10"
Bathroom	2.20 x 2.00	7'3" x 6'7"
En-Suite	2.24 x 1.60	7'4" x 5'3"
Winter Garden 1	3.40 x 1.25	11'2" x 4'1"
Winter Garden 2	3.40 x 1.25	11'2" x 4'1"



**N**

- 3 Bedroom
- 2 Bedroom
- 1 Bedroom



For Disclaimers please see Plans on divider.  
Total Internal Area excludes Winter Gardens and / or Terraces.



# 11<sup>TH</sup> FLOOR PREMIUM APARTMENTS

**110**

<b>Total Internal Area</b>	93.1m <sup>2</sup>	1002.1ft <sup>2</sup>
<b>Total External Area</b>	127.9m <sup>2</sup>	1376.7ft <sup>2</sup>
Master Bedroom	5.12 x 3.33	16'10" x 10'11"
Bedroom 2	3.61 x 3.08	11'10" x 10'1"
Bedroom 3	3.46 x 3.11	11'4" x 10'2"
Living Room	5.44 x 3.54	17'10" x 11'7"
Kitchen	3.66 x 1.89	12'0" x 6'2"
Bathroom	2.20 x 2.00	7'3" x 6'7"
En-Suite	2.20 x 2.00	7'2" x 6'7"
Terrace	19.59 x 5.63	64'3" x 18'6"

**111**

<b>Total Internal Area</b>	71.8m <sup>2</sup>	772.8ft <sup>2</sup>
<b>Total External Area</b>	13.4m <sup>2</sup>	144.2ft <sup>2</sup>
Master Bedroom	3.27 x 3.19	10'9" x 10'5"
Bedroom 2	3.61 x 2.79	11'10" x 9'2"
Living Room	4.23 x 2.98	13'11" x 9'10"
Kitchen	4.51 x 3.00	14'9" x 9'10"
Bathroom	2.20 x 2.00	7'3" x 6'7"
En-Suite	2.20 x 1.60	7'3" x 5'3"
Terrace	13.13 x 1.02	43'1" x 3'4"

**112**

<b>Total Internal Area</b>	90.7m <sup>2</sup>	976.1ft <sup>2</sup>
<b>Total External Area</b>	24.9m <sup>2</sup>	268.1ft <sup>2</sup>
Master Bedroom	3.40 x 2.97	11'2" x 9'9"
Bedroom 2	3.44 x 3.00	11'4" x 9'10"
Bedroom 3	3.66 x 2.76	12'0" x 9'1"
Living Room	4.73 x 2.89	15'6" x 9'6"
Kitchen	5.44 x 2.38	17'10" x 7'10"
Bathroom	2.20 x 2.00	7'3" x 6'7"
En-Suite	2.20 x 1.80	7'3" x 5'11"
Terrace 1	4.56 x 1.02	14'11" x 3'4"
Terrace 2	11.37 x 1.53	37'4" x 5'0"

**113**

<b>Total Internal Area</b>	67.7m <sup>2</sup>	728.7ft <sup>2</sup>
<b>Total External Area</b>	25.6m <sup>2</sup>	275.6ft <sup>2</sup>
Master Bedroom	3.92 x 2.74	12'10" x 9'0"
Bedroom 2	3.66 x 2.74	12'0" x 9'0"
Living Room/Kitchen	5.22 x 5.12	17'2" x 16'9"
Kitchen	2.50 x 2.49	8'2" x 8'2"
Bathroom	2.20 x 2.00	7'3" x 6'7"
En-Suite	2.20 x 1.80	7'3" x 5'11"
Terrace	13.50 x 2.04	44'4" x 6'8"

**114**

<b>Total Internal Area</b>	94.1m <sup>2</sup>	1012.9ft <sup>2</sup>
<b>Total External Area</b>	21.1m <sup>2</sup>	227.1ft <sup>2</sup>
Master Bedroom	3.81 x 3.18	12'6" x 10'5"
Bedroom 2	3.34 x 2.77	11'0" x 9'1"
Bedroom 3	3.70 x 2.95	12'2" x 9'8"
Living Room	4.67 x 4.21	15'4" x 13'10"
Kitchen	2.98 x 2.60	9'9" x 8'6"
Bathroom	2.20 x 2.00	7'3" x 6'7"
En-Suite	2.20 x 1.80	7'3" x 5'11"
Terrace 1	4.92 x 1.03	16'2" x 3'4"
Terrace 2	9.70 x 1.87	31'10" x 6'2"

**115**

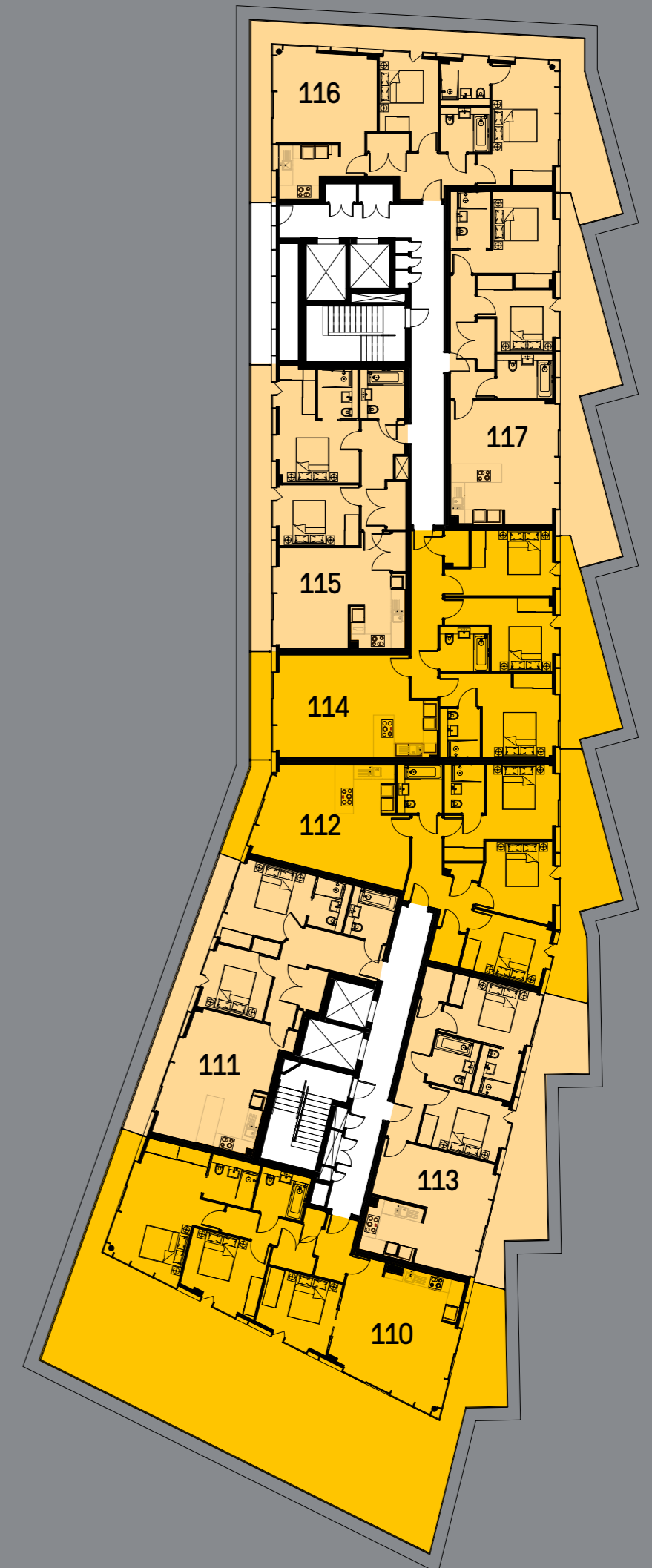
<b>Total Internal Area</b>	71.2m <sup>2</sup>	766.4ft <sup>2</sup>
<b>Total External Area</b>	13.3m <sup>2</sup>	143.2ft <sup>2</sup>
Master Bedroom	3.61 x 2.80	11'10" x 9'2"
Dressing Room	2.07 x 1.66	6'10" x 5'5"
Bedroom 2	3.61 x 2.75	11'10" x 9'0"
Living Room	4.57 x 3.18	15'0" x 10'5"
Kitchen	3.40 x 2.53	11'2" x 8'4"
Bathroom	2.20 x 2.00	7'3" x 6'7"
En-Suite	2.20 x 1.80	7'3" x 5'11"
Terrace	13.03 x 1.02	42'9" x 3'4"

**116**

<b>Total Internal Area</b>	72.5m <sup>2</sup>	780.4ft <sup>2</sup>
<b>Total External Area</b>	37.4m <sup>2</sup>	402.6ft <sup>2</sup>
Master Bedroom	5.55 x 2.74	18'2" x 9'0"
Bedroom 2	4.25 x 2.77	13'11" x 9'1"
Living Room	4.59 x 4.08	15'1" x 13'5"
Kitchen	2.75 x 2.40	9'0" x 7'10"
Bathroom	2.20 x 2.00	7'3" x 6'7"
En-Suite	2.20 x 2.00	7'3" x 6'7"
Terrace	29.62 x 1.02	97'2" x 3'3"

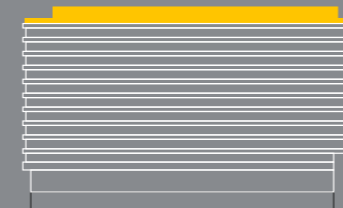
**117**

<b>Total Internal Area</b>	69.7m <sup>2</sup>	750.2ft <sup>2</sup>
<b>Total External Area</b>	28.4m <sup>2</sup>	305.7ft <sup>2</sup>
Master Bedroom	4.37 x 2.70	14'4" x 8'10"
Bedroom 2	2.80 x 2.50	9'2" x 8'3"
Living Room	4.62 x 2.90	15'2" x 9'6"
Kitchen	4.62 x 2.70	15'2" x 8'10"
Bathroom	2.50 x 2.00	8'3" x 6'7"
En-Suite	2.54 x 1.80	8'4" x 5'11"
Terrace	14.42 x 1.95	47'4" x 6'5"



**N**

- 3 Bedroom
- 2 Bedroom
- 1 Bedroom



For Disclaimers please see Plans on divider.  
Total Internal Area excludes Winter Gardens and / or Terraces.



# THE REAL KINGS CROSS



Camden Lock



Sir John Soane Museum



House of Illustration



Rotunda



Battle Bridge Place







KINGS CROSS LONDON

**ONLYX**

APARTMENTS

PLANS