



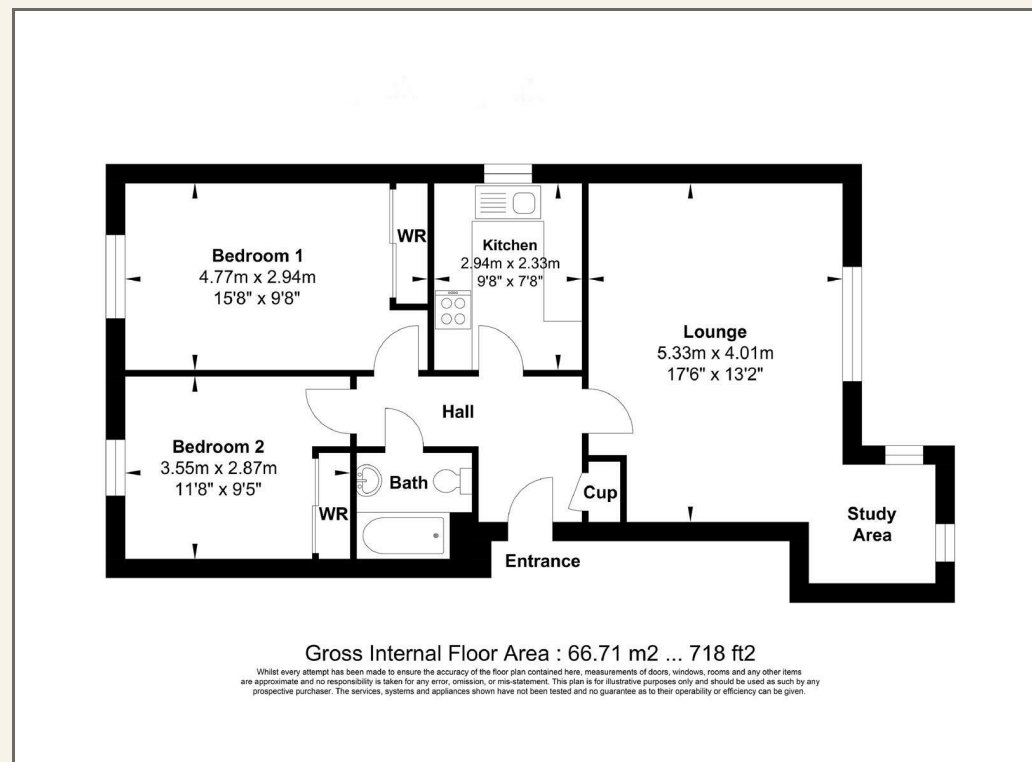
Flat D, 250 Noak Hill Road, Billericay, CM12 9UP

£265,000



Flat D, 250 Noak Hill Road, Billericay, CM12 9UP
£265,000

A modern and spacious two bedroom first floor flat, located in a non-estate position on the Billericay/Laindon borders (CM12 postcode). With a security intercom entrance and stairs to the first floor with an entrance hall with built-in storage and loft storage access. There is a large lounge with a study area, kitchen, two double bedrooms and a bathroom. There is a parking space and communal garden to the rear.



VIEWING: Strictly by prior arrangement with Ashton White Estate Agents.

THESE PARTICULARS DO NOT CONSTITUTE ANY OFFER OF CONTRACT EITHER DIRECT OR COLLATERAL NOR ARE THEY TO BE ACTED UPON AS REPRESENTATIONS. ALL INTERESTED PARTIES MUST THEMSELVES VERIFY THE ACCURACY OF THESE PARTICULARS.



- NO ONWARD CHAIN
- LARGE LOUNGE WITH STUDY AREA
- BATHROOM/WC
- PARKING TO REAR
- 2.3 MILES LAINDON STATION/3 MILES BILLERICAY STATION
- TWO DOUBLE BEDROOMS
- KITCHEN WITH BUILT-IN OVEN AND HOB
- GAS CENTRAL HEATING
- COMMUNAL GARDEN



140 High Street
Billericay
Essex
CM12 9DF
01277 659002
admin@ashtonwhite.co.uk
<https://www.ashtonwhite.co.uk>