



6 Courtlands, Billericay CM12 9HX

Asking Price £900,000





# 6 Courtlands

Billericay CM12 9HX  
Asking Price £900,000

**\*\*SALE AGREED BY ASHTON WHITE\*\*** This highly appointed and beautifully presented four double bedroomed family home is situated less than a mile of the High Street and pleasantly nestled within a rarely available cul-de-sac with just seven other houses.

The impressive accommodation commences with a spacious reception hallway with high quality Karndean flooring incorporating ground floor cloakroom and doors off to the family room at the front of the house, sitting room to the rear with bi-fold doors to garden, a quite superb kitchen/diner with large central island unit with seating for four, bespoke hand-crafted fitted kitchen cabinets with contrasting working surfaces, walk-in shelved pantry, separate utility room with further fitted cupboards and work surfaces.

Upstairs and from the landing, the master bedroom enjoys the benefit of a walk-in dressing room and quality fitted en-suite bathroom. there are three further double bedrooms and a lovely bespoke shower room with double enclosure and complementing grey and white tiling. Outside, the property is set back from the road and approached across a large block paved driveway enabling parking for 5-6 cars in addition to the integral double garage.

The delightful landscaped rear garden features a large versatile Log Cabin which could lend itself as a home bar, gym or home office. The focal point of the garden is the "Swim Spa", where at one end you can swim against the powerful current jets, or relax at the other end in the 'Hot-Tub' "Jucuzzi" Spa.

In summary, a very fine house in great location for schools, excellent town centre and for the station, approx. 15-20 walk minutes away.







**SPACIOUS ENTRANCE HALL**  
19' max x 6'0 (5.79m max x 1.83m)

**FAMILY ROOM**  
16'10x 12'0 (5.13mx 3.66m)

**SITTING ROOM**  
18'4 x 12'0 (5.59m x 3.66m)

**KITCHEN/BREAKFAST ROOM**  
21'6 x 17'4 (6.55m x 5.28m)

**WALK-IN PANTRY**

**UTILITY ROOM**  
6'0 x 4'7 (1.83m x 1.40m)

**BEDROOM ONE**  
16'5 max<9'0 x12'0 (5.00m max<2.74m x3.66m)

**DRESSING ROOM**  
8'4 x 6'10 (2.54m x 2.08m)

**EN-SUITE BATHROOM**

**BEDROOM TWO**  
12'0 x 11'0 (3.66m x 3.35m)

**BEDROOM THREE**  
15'0 x 8'0 (4.57m x 2.44m)

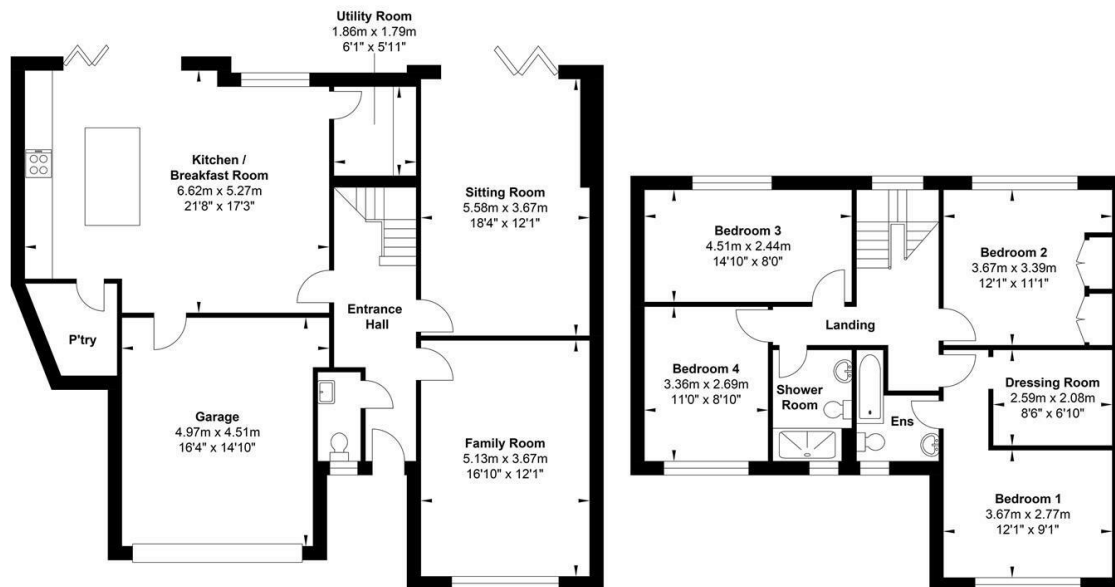
**BEDROOM FOUR**  
11'0 x 9'0 (3.35m x 2.74m)

**SHOWER ROOM**  
8'0 x 4'9 (2.44m x 1.45m)

**GARAGE**  
16'0 x 14'0 (4.88m x 4.27m)

**IMPRESSIVE 'B' RATING E.P.C.**





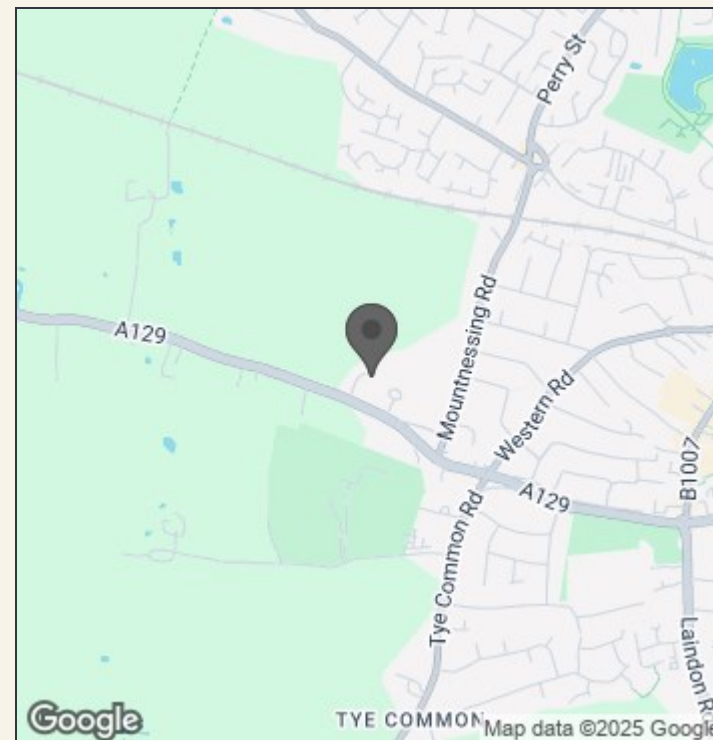
Ground Floor


First Floor

Gross Internal Floor Area : 184.0 m2 ... 1980 ft2



Whilst every attempt has been made to ensure the accuracy of the floor plan contained here, measurements of doors, windows, rooms and any other items are approximate and no responsibility is taken for any error, omission, or mis-statement. This plan is for illustrative purposes only and should be used as such by any prospective purchaser. The services, systems and appliances shown have not been tested and no guarantee as to their operability or efficiency can be given.



Energy Efficiency Rating		Current	Potential
Very energy efficient - lower running costs			
(92 plus) <b>A</b>			
(81-91) <b>B</b>		87	88
(69-80) <b>C</b>			
(55-68) <b>D</b>			
(39-54) <b>E</b>			
(21-38) <b>F</b>			
(1-20) <b>G</b>			
Not energy efficient - higher running costs			
England & Wales		EU Directive 2002/91/EC	

**VIEWING:** Strictly by prior arrangement with Ashton White Estate Agents.

THESE PARTICULARS DO NOT CONSTITUTE ANY OFFER OF CONTRACT EITHER DIRECT OR COLLATERAL NOR ARE THEY TO BE ACTED UPON AS REPRESENTATIONS. ALL INTERESTED PARTIES MUST THEMSELVES VERIFY THE ACCURACY OF THESE PARTICULARS.



**140 High Street**  
**Billericay**  
**Essex**  
**CM12 9DF**  
**tel: 01277 659002**  
**Email: admin@ashtonwhite.co.uk**  
**https://www.ashtonwhite.co.uk**