



The Bungalow, Badbury, SN4 OEU

**Guide Price £700,000**

**richard james**

Village & Country Homes

richard  
james





## The Bungalow

Badbury

Freehold | EPC Rating - D

 4
  3
  2

This extended four-bedroom detached bungalow is set on a peaceful, leafy quarter-acre plot, offering an ideal blend of rural charm and modern convenience. Inside, the home features a spacious kitchen-dining room perfect for family gatherings, a large main reception room complete with a cozy wood-burning stove, and an additional reception room for flexible use.

There are four bedrooms with two bedrooms benefit from en-suite bathrooms, providing added comfort and privacy as well as the refitted family bathroom.

Outdoors, the property includes a double garage and plenty of parking, all surrounded by mature trees for a secluded, tranquil atmosphere. Its location is a short walk from local amenities like the Baker's Arms pub, the Three Trees Café, and the Plough on the Hill.

The property also offers easy access to the A419 and M4, and Swindon station connects you to London in about an hour. Marlborough's lively high street, known for its shops and dining, is also within close reach.





For everyday conveniences, the nearby villages of Wroughton and Chiseldon offer stores, takeaways, restaurants, hairdressers, and a doctor's surgery. Badbury's setting along the edge of the Ridgeway bridle path provides endless opportunities for country walks, including popular routes to Barbury Castle and Liddington Hill. Coate Water Country Park is also nearby, adding to the appeal of this idyllic countryside location.











richard  
james

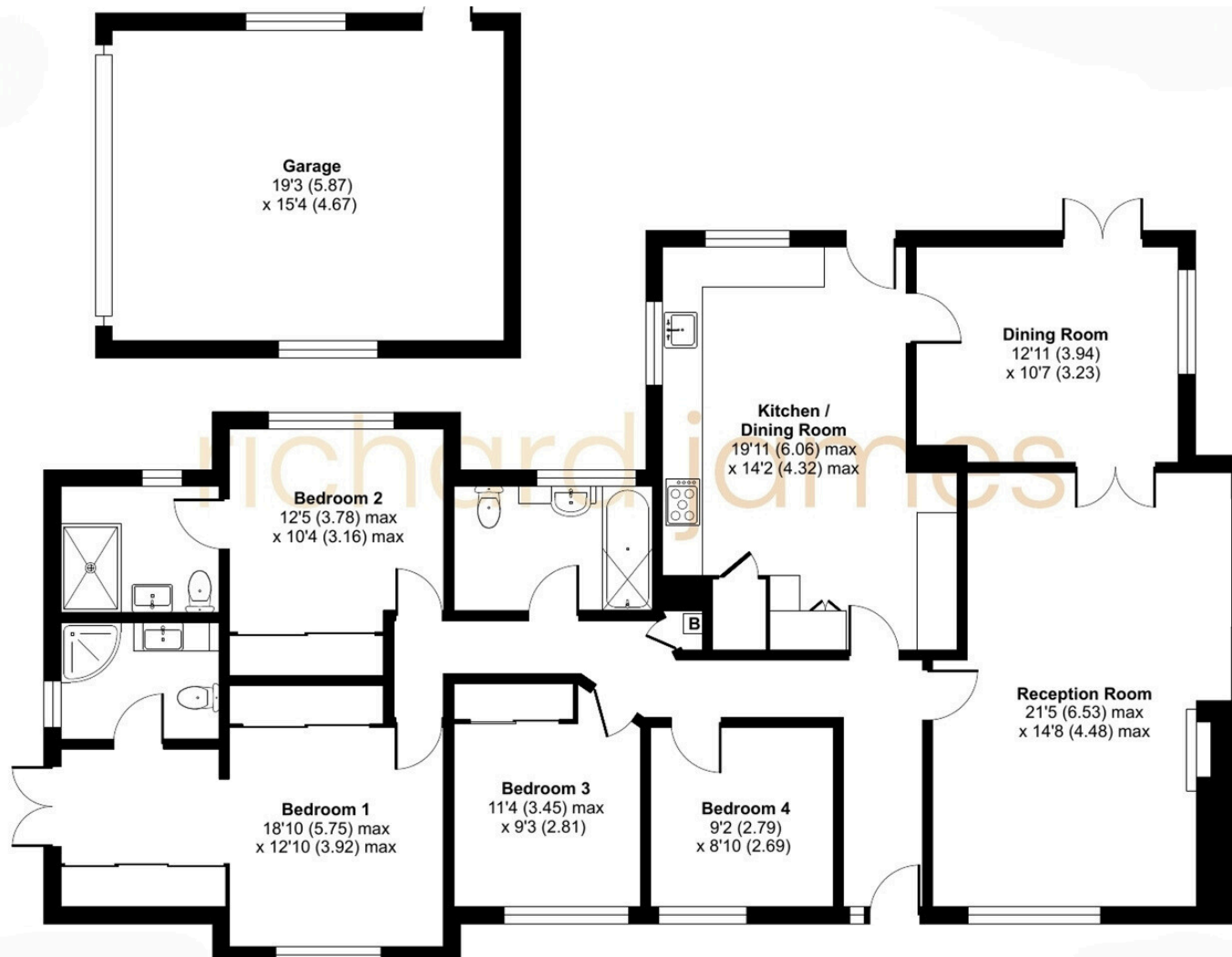




richard  
james



## Floorplan



**01793 814 542**

[wroughton@richardjames.uk](mailto:wroughton@richardjames.uk)

80 High Street | Wroughton | SN4 9JZ

**richard james**

[richardjames.uk](http://richardjames.uk)